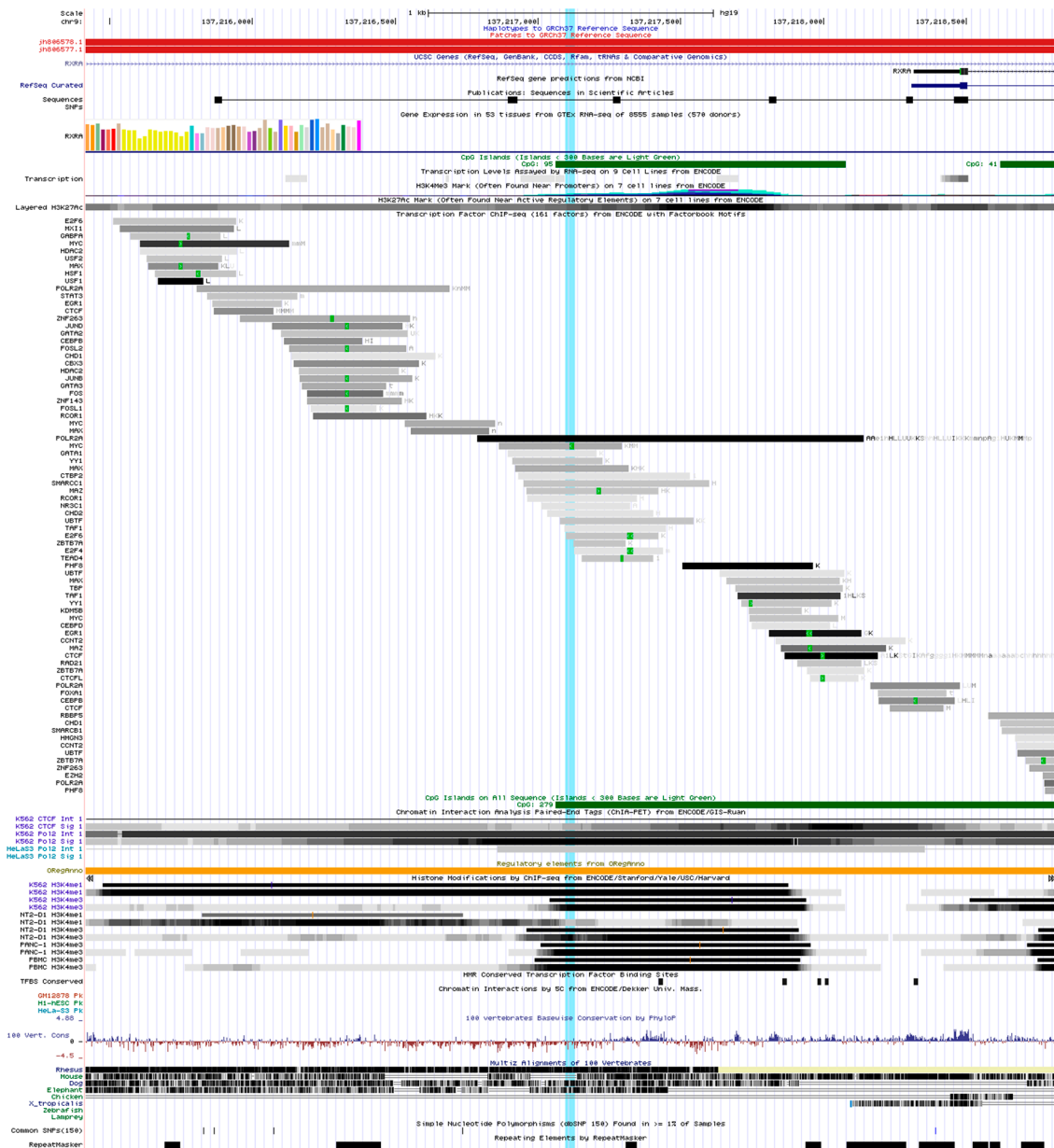


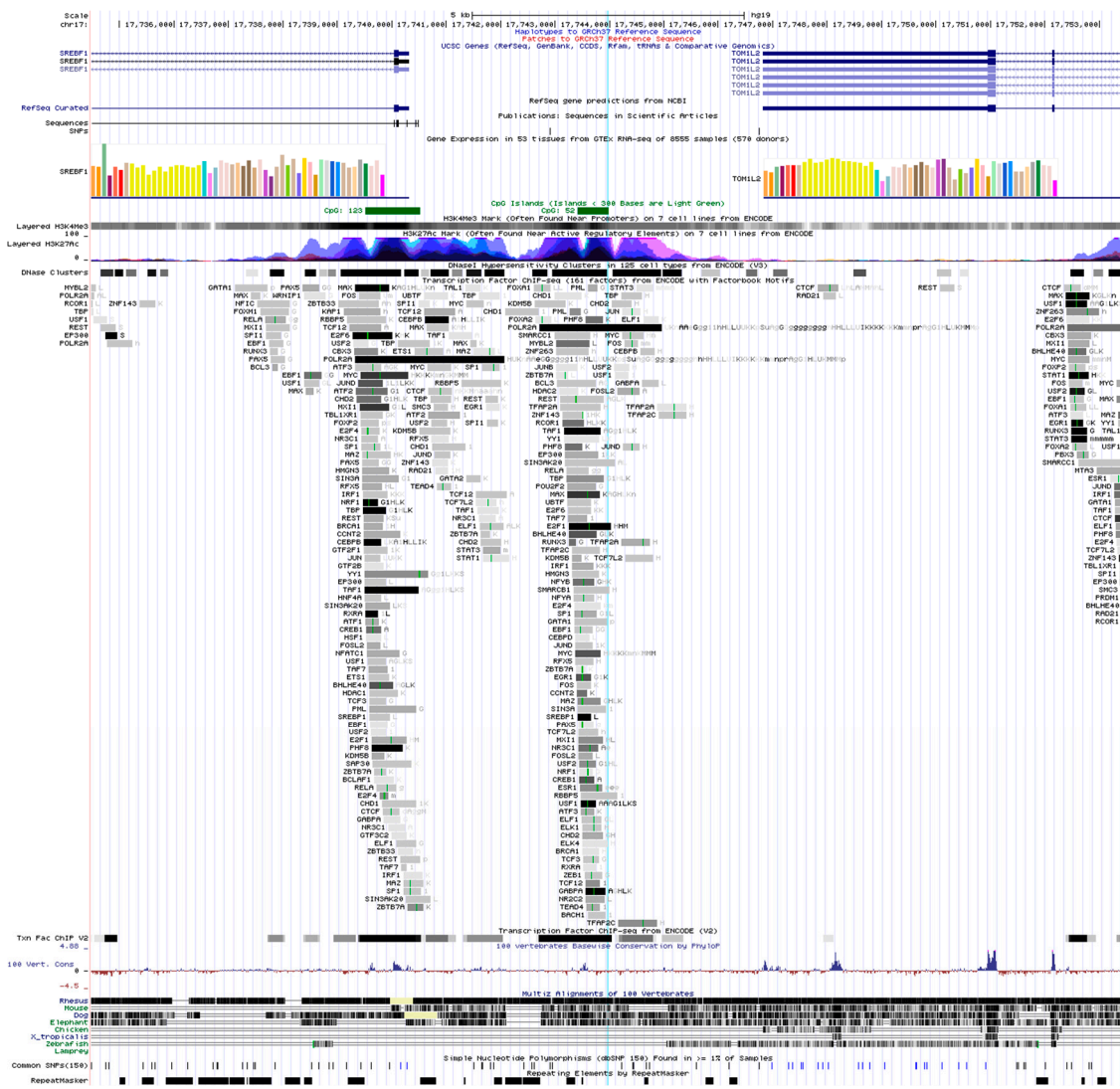


**Figure S1.** Genomic region overview of the promoter of PPARA gene where the assay was performed (highlighted in light blue). The overview shows the transcriptions factor which has been demonstrated to be bound to the region by in vivo experiment (ENCODE project). The image was extracted from GRCh37/hg39 assembly of UCSC Genome Browser.

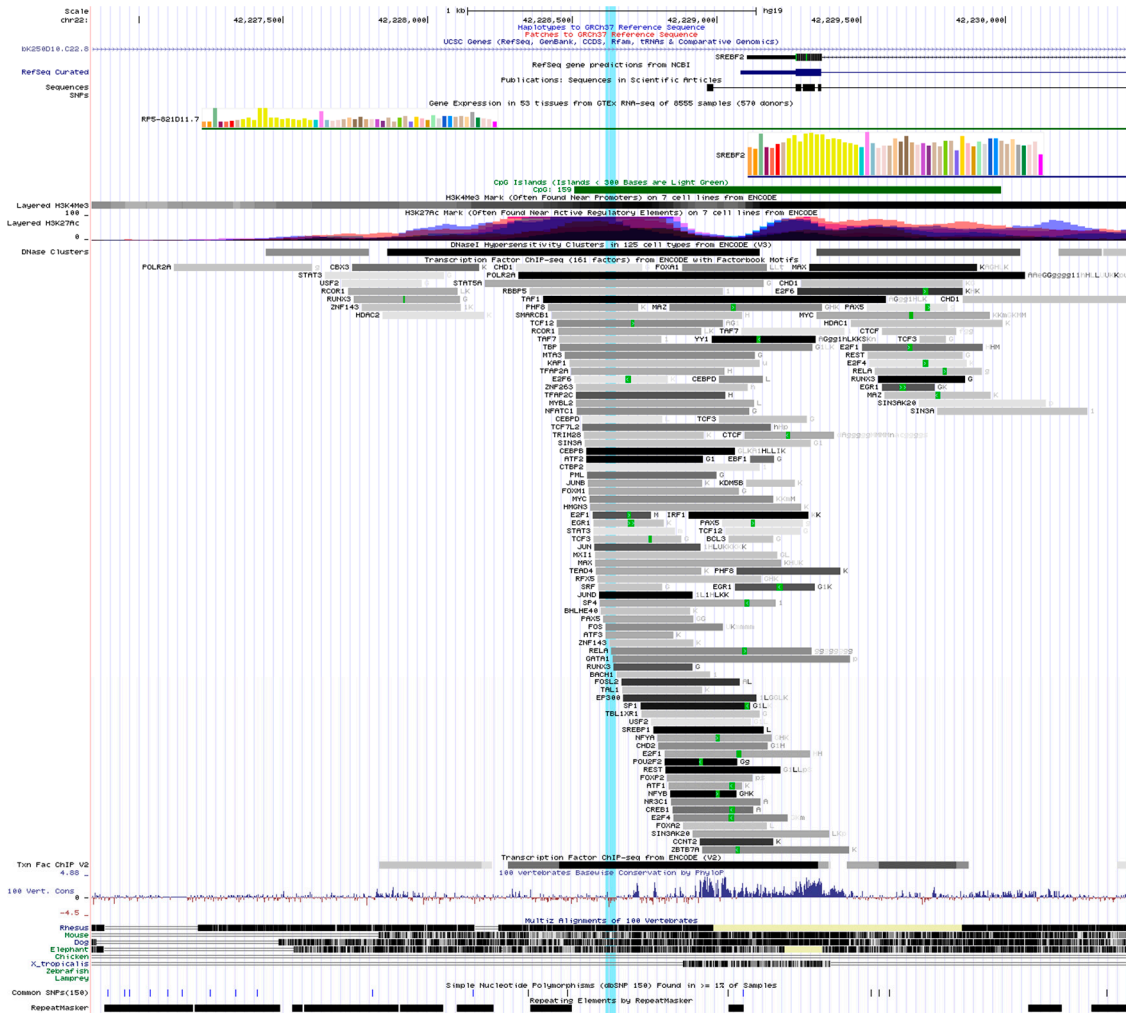


**Figure S2.** Genomic region overview of the promoter of RXRA gene where the assay was performed (highlighted in light blue). The overview shows the transcription factors which have been demonstrated to be bound to the region by in vivo experiment (ENCODE project). The image was extracted from GRCh37/hg39 assembly of UCSC Genome Browser.

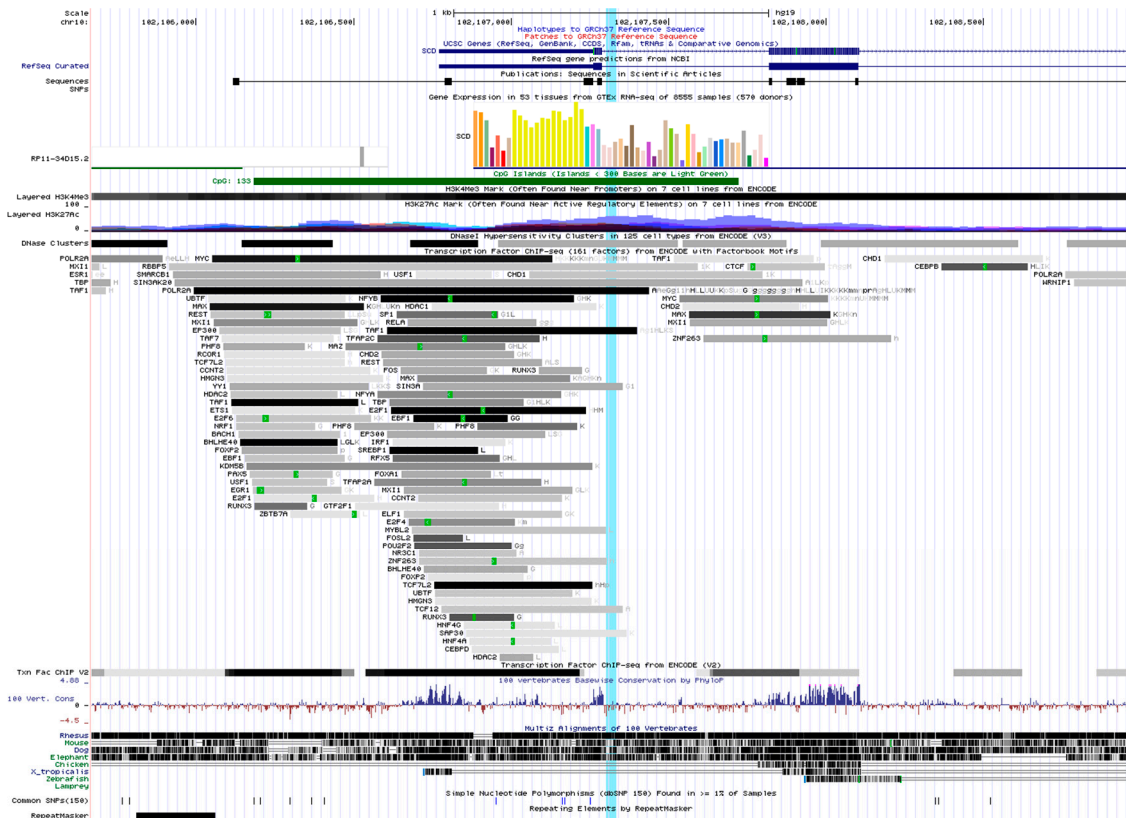




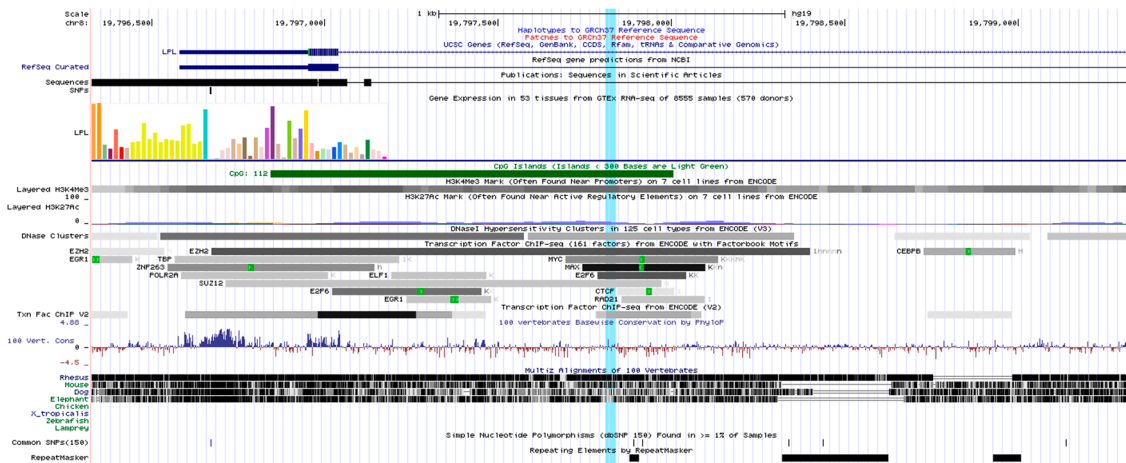
**Figure S4.** Genomic region overview of the promoter of SREBF1 gene where the assay was performed (highlighted in light blue). The overview shows the transcriptions factor which has been demonstrated to be bound to the region by in vivo experiment (ENCODE project). The image was extracted from GRCh37/hg39 assembly of UCSC Genome Browser.



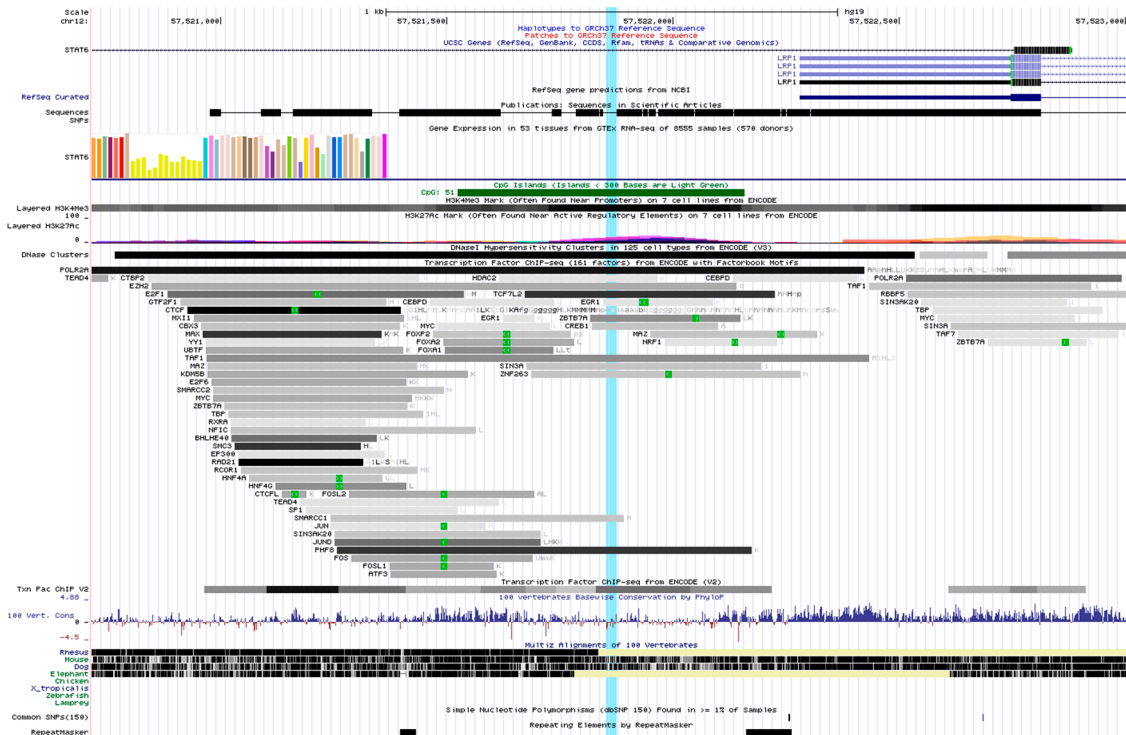
**Figure S5.** Genomic region overview of the promoter of SREBF2 gene where the assay was performed (highlighted in light blue). The overview shows the transcriptions factor which has been demonstrated to be bound to the region by in vivo experiment (ENCODE project). The image was extracted from GRCh37/hg39 assembly of UCSC Genome Browser.



**Figure S6.** Genomic region overview of the promoter of SCD gene where the assay was performed (highlighted in light blue). The overview shows the transcriptions factor which has been demonstrated to be bound to the region by in vivo experiment (ENCODE project). The image was extracted from GRCh37/hg39 assembly of UCSC Genome Browser.



**Figure S7.** Genomic region overview of the promoter of LPL gene where the assay was performed (highlighted in light blue). The overview shows the transcriptions factor which has been demonstrated to be bound to the region by in vivo experiment (ENCODE project). The image was extracted from GRCh37/hg39 assembly of UCSC Genome Browser.

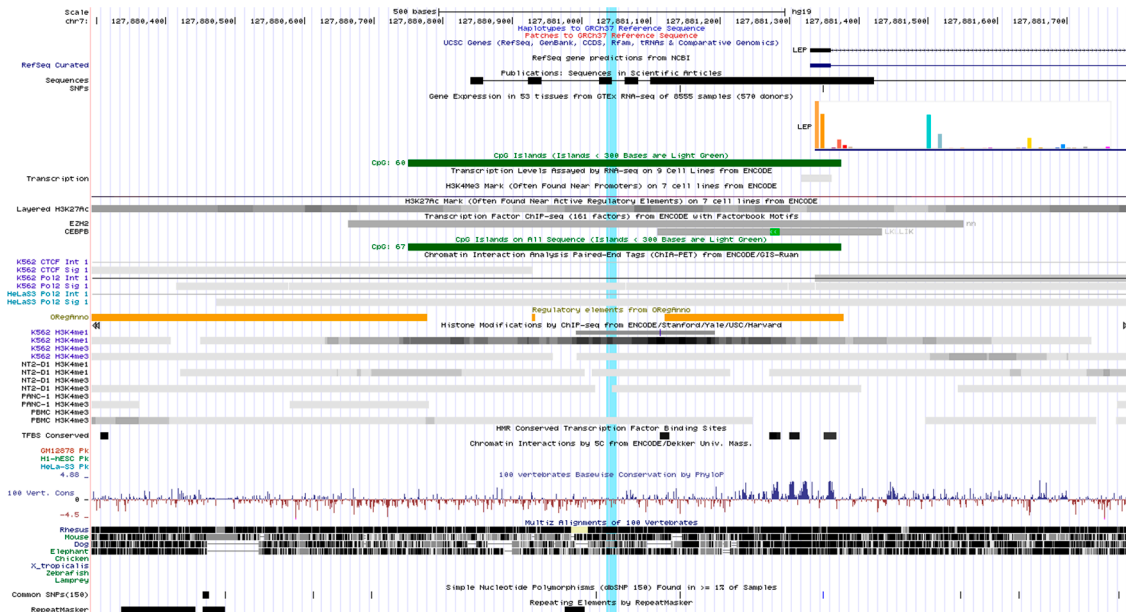


**Figure S8.** Genomic region overview of the promoter of LRP1 gene where the assay was performed (highlighted in light blue). The overview shows the transcriptions factor which has been demonstrated to be bound to the region by in vivo experiment (ENCODE project). The image was extracted from GRCh37/hg39 assembly of UCSC Genome Browser.

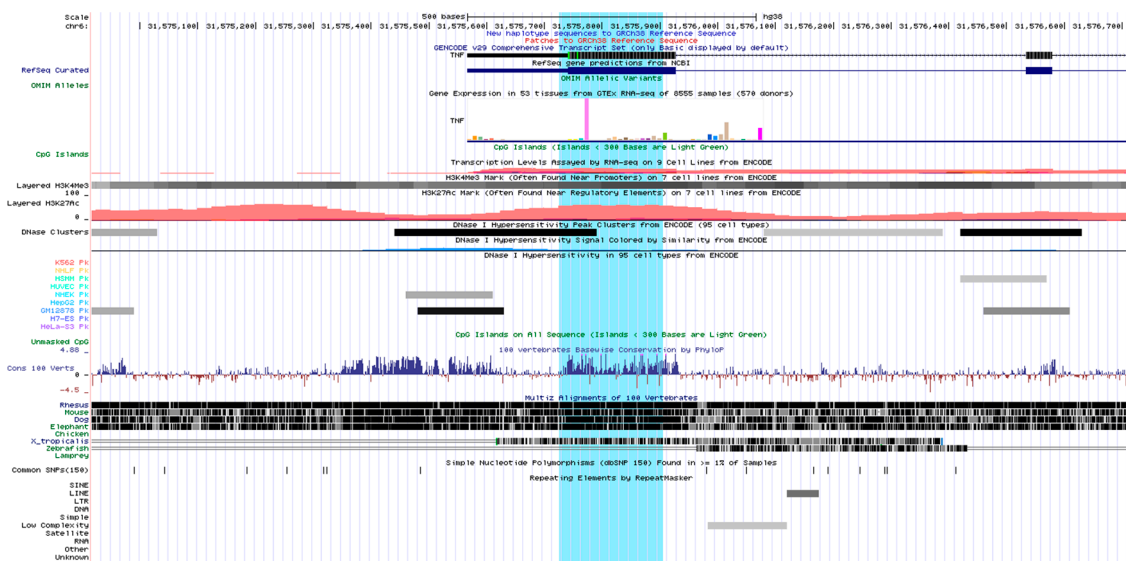








**Figure S10.** Genomic region overview of the promoter of LEP gene where the assay was performed (highlighted in light blue). The overview shows the transcriptions factor which has been demonstrated to be bound to the region by in vivo experiment (ENCODE project). The image was extracted from GRCh37/hg39 assembly of UCSC Genome Browser.



**Figure S11.** Genomic region overview of the promoter of TNF gene where the assay was performed (highlighted in light blue). The overview shows the transcriptions factor which has been demonstrated to be bound to the region by in vivo experiment (ENCODE project). The image was extracted from GRCh37/hg39 assembly of UCSC Genome Browser.

