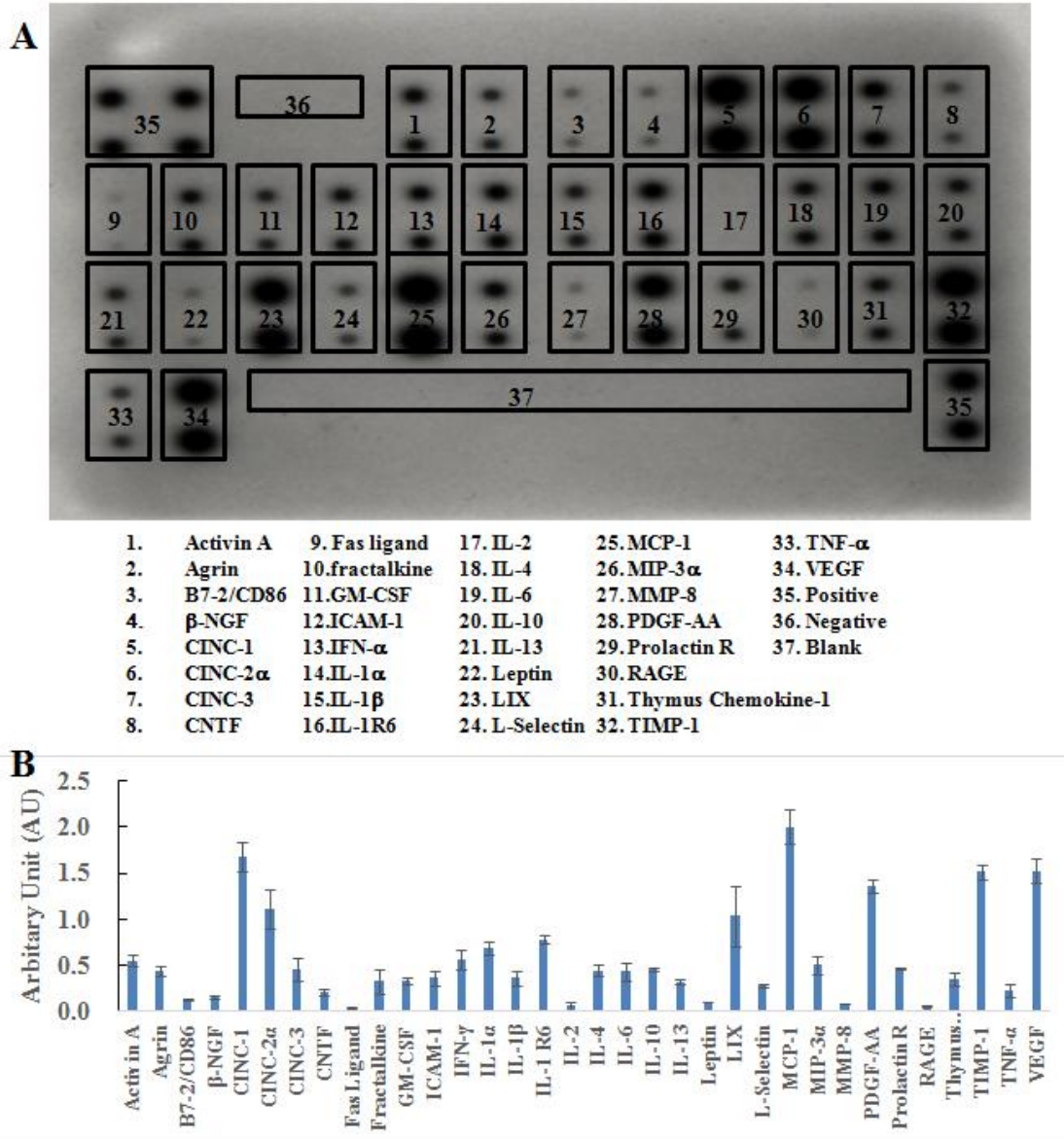
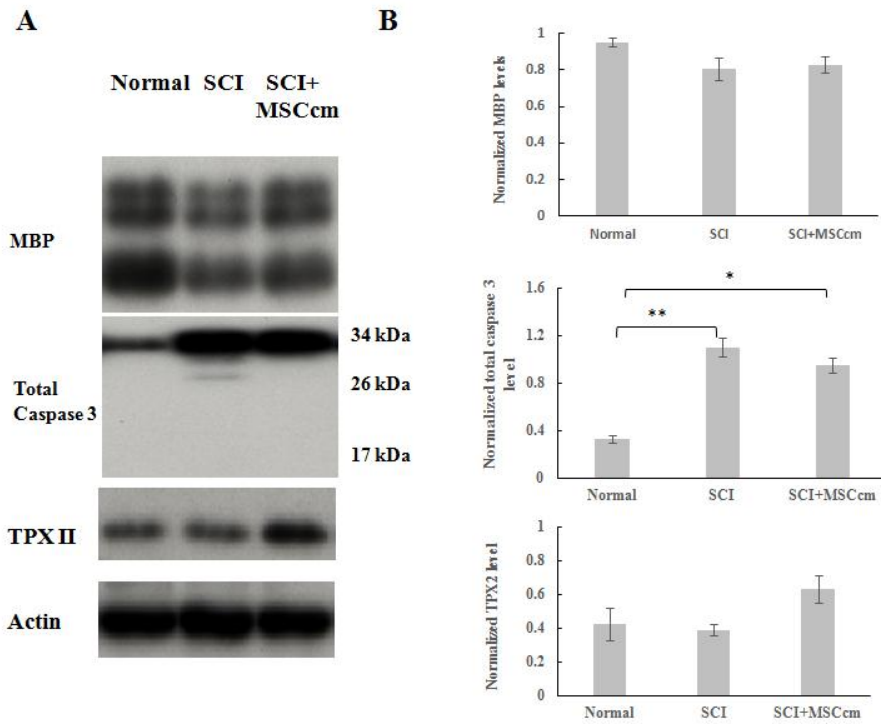


**Figure S1.** Characterization of rat bone marrow mesenchymal stem cells (BM-MSC). (A) CD90 immunoreactive cells with Hoechst. (B) CD29 immuno-reactive cells with Hoechst. (C) CD34 immunoreactive cells with Hoechst.



**Figure S2.** Factors revealed in conditioned medium of BM-MSC. **(A)** Cytokines array profile of 34 specified proteins of MSCcm. **(B)** Bar diagrams represents the ratio of the spot mean pixel densities/reference point pixel densities from 3 independent experiments. Antibody arrays were performed on 3 distinct CM samples. Results were means  $\pm$  SEM.



**Figure S3.** Expression of protein levels in normal or injured spinal cord of rats at 7 days post-injury. (A) Protein levels were determined in spinal cords by western blot analysis. (B) The density of blots was quantified and expressed as bar charts. Results were means  $\pm$  SEM ( $N=3$  rats each). Statistical significance was evaluated using one-way ANOVA and Bonferroni's  $t$ -test. \*  $p < 0.05$ , \*\*  $p < 0.01$ .