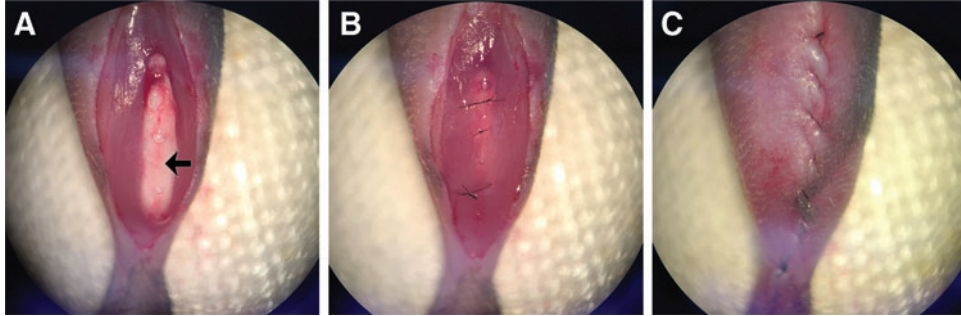


## Supplementary Data



**SUPPLEMENTARY FIG. S1.** Implantation of mmRNA-releasing scaffolds into an intramuscular implantation model. (A) After a partial medial incision of the tibialis anterior muscle, the scaffold is implanted (*arrow*) between two segments of the muscle. (B) The muscle is sutured closed. (C) Afterwards, the skin is sutured closed.