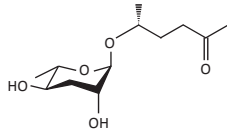
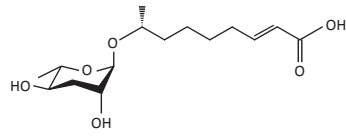


Supplementary Fig. 1.

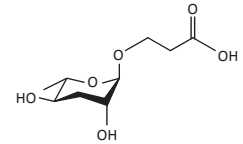
ascr#2 (asc-C6-MK, C6 ascaroside, daumone-2)



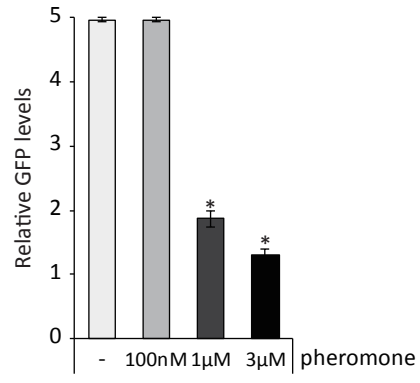
ascr#3 (asc- $\Delta$ C9, C9 ascaroside, daumone-3)



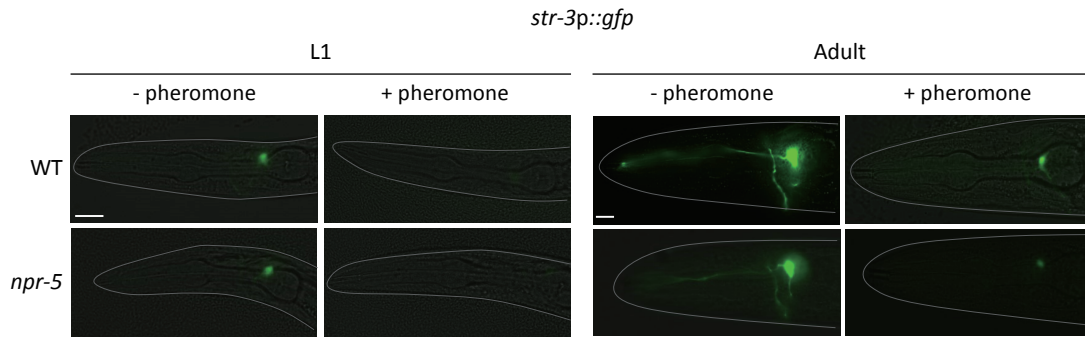
ascr#5 (asc- $\omega$ C3, C3 ascaroside)



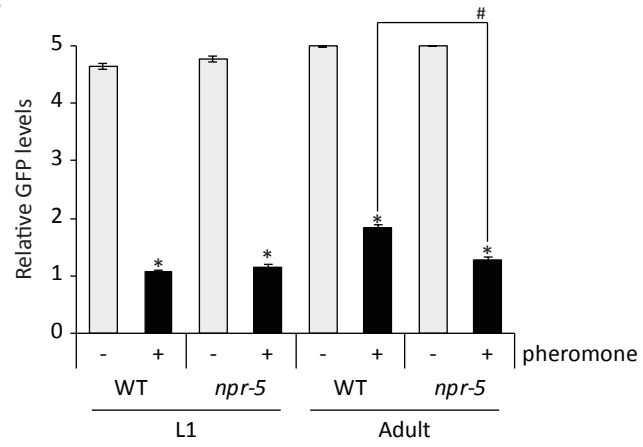
Supplementary Fig. 2.



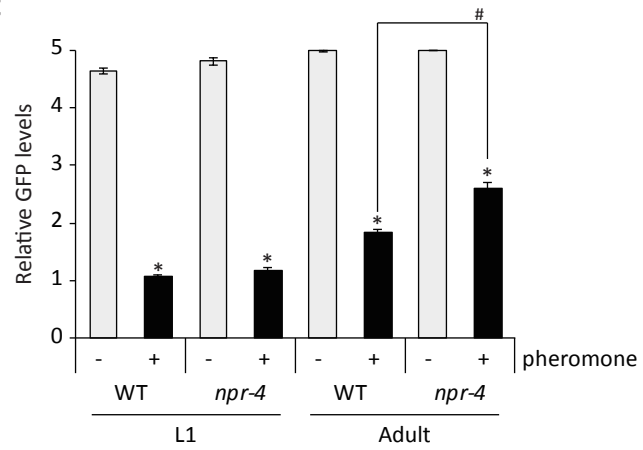
**A**



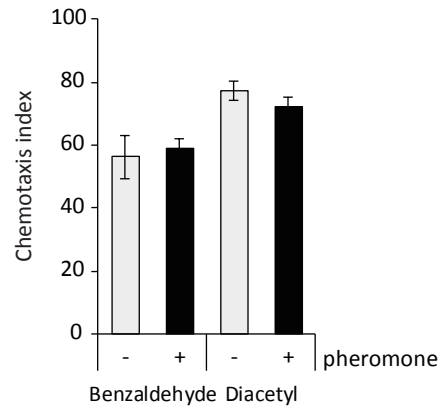
**B**



**C**



Supplementary Fig. 4.



# EDITORIAL CERTIFICATE



**Date:** Oct 16, 2018

**Manuscript Author(s):** 김규형

**Manuscript Title:** Neuropeptide signaling regulates pheromone-mediated gene expression of a chemoreceptor gene in *C. elegans*

## To Whom It May Concern:

This letter confirms that the manuscript corresponding to the information detailed above was edited by a professional, native English-speaking editor at Wordvice.

We guarantee 100% language accuracy in the text, as edited and delivered to the author(s) on the date below. We make no claims as to the substantive matter covered by the paper and have not altered the intent or research content drafted by the author(s).

The author(s) may accept or reject any of our comments or suggestions upon receipt of the document we edited. Should you have any questions or concerns, please contact Wordvice at [edit@wordvice.com](mailto:edit@wordvice.com)

Sincerely,  
Wordvice

Wordvice is a premier international English editing service. Our mission is to help researchers, scholars, students, and professionals reach their full potential through clear communication in their writing. By providing premium English editing services at affordable rates to clients from around the world, Wordvice seeks to tear down language barriers and contribute to the advancement of research and education.

Signature

A handwritten signature in blue ink that reads "Kevin Heintz". To the left of the signature is the "ESSAYREVIEW" logo, and to the right is a stylized blue feather logo.

Kevin Heintz  
Managing Editor, Wordvice

Date of Issue

Oct 16, 2018

## Contact Wordvice

| KOREA

[edit@essayreview.co.kr](mailto:edit@essayreview.co.kr)

1522-9180

[www.essayreview.co.kr](http://www.essayreview.co.kr)

| U.S.

[edit@wordvice.com](mailto:edit@wordvice.com)

[www.wordvice.com](http://www.wordvice.com)

| JAPAN

[edit@wordvice.jp](mailto:edit@wordvice.jp)

+81 50-5327-7663

[www.wordvice.jp](http://www.wordvice.jp)

| TAIWAN

[edit@wordvice.com.tw](mailto:edit@wordvice.com.tw)

070-1017-6093

[www.wordvice.com.tw](http://www.wordvice.com.tw)

| CHINA

[edit@wordvice.cn](mailto:edit@wordvice.cn)

95013-5301-2128

[www.wordvice.cn](http://www.wordvice.cn)

| TURKEY

[edit@wordvice.com.tr](mailto:edit@wordvice.com.tr)

+90 0530 390 6216

[www.wordvice.com.tr](http://www.wordvice.com.tr)

\*EssayReview is a service of Wordvice