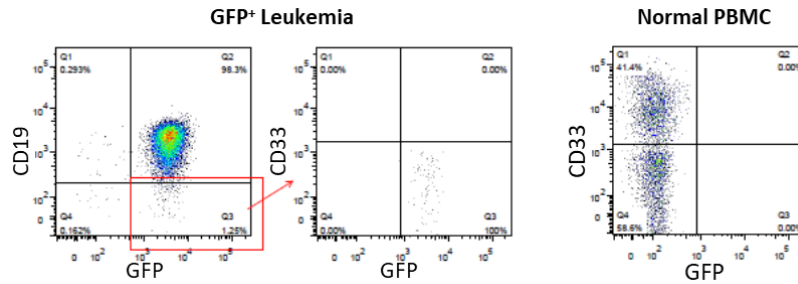
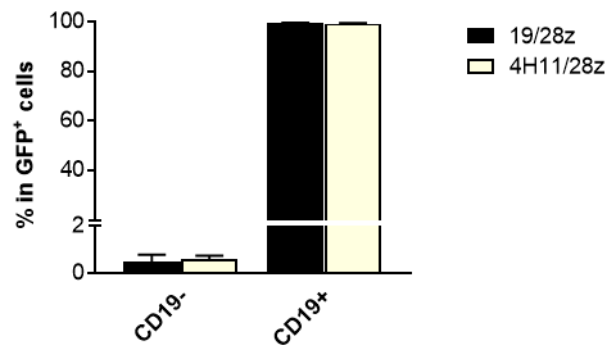


## Supplementary Results



**Figure S1. Characterization of GFP<sup>+</sup> leukemia cells for the expression of human CD19 and CD33.** GFP<sup>+</sup> leukemia cells (left) were stained with anti-human CD19 and CD33, and analyzed by flow cytometry. Human PBMCs (right) were used as the control and stained with anti-human CD33. Representative staining profiles are shown.



**Figure S2. Comparison of CD19<sup>+</sup>GFP<sup>+</sup> and CD19<sup>-</sup>GFP<sup>+</sup> leukemia cells in humanized mice treated with 19/28z or 4H11/28z CAR T cells.** Blood cells were collected from leukemic hu-mice 8 weeks after infusion of 19/28z and 4H11/28z CAR T cells (n=5/group) and levels of CD19<sup>-</sup>GFP<sup>+</sup> and CD19<sup>+</sup>GFP<sup>+</sup> leukemia cells were determined by flow cytometry.