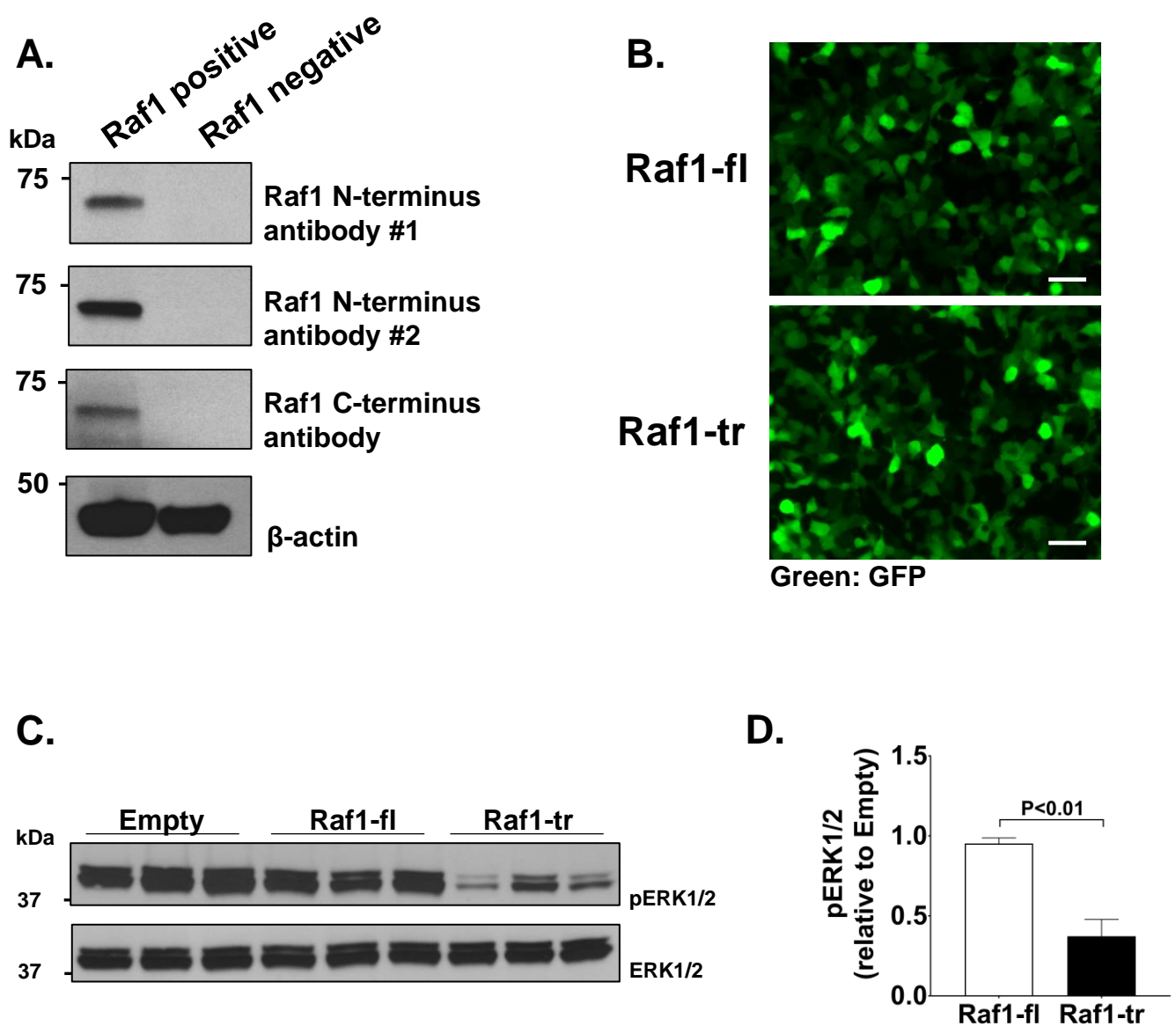


# Figure S2



**Figure S2. Validation of Raf1 antibodies for western blot and Ras-ERK signaling in the presence of complete media**

(A) Western blots using three different Raf1 antibodies were performed on lysate from HAP1 cells expressing Raf1 (Raf1 positive) or HAP1 cells that lack Raf1 (Raf1 negative) to confirm antibody specificity.  $\beta$ -actin was used as a loading control. (B) GFP fluorescence in HEK cells co-expressing Raf1-fl (top) or Raf1-tr (bottom) demonstrating similar transfection efficiency between both constructs. Scale bar, 50  $\mu$ m. (C) Western blot of phosphorylated ERK1/2 in HEK cells expressing Empty vector, Raf1-fl, or Raf1-tr cultured in complete media. Total ERK1/2 was used as a loading control. (D) Quantitation of phosphorylated ERK relative to Empty vector. The results are shown as mean  $\pm$  s.e.m.