

Figure S6

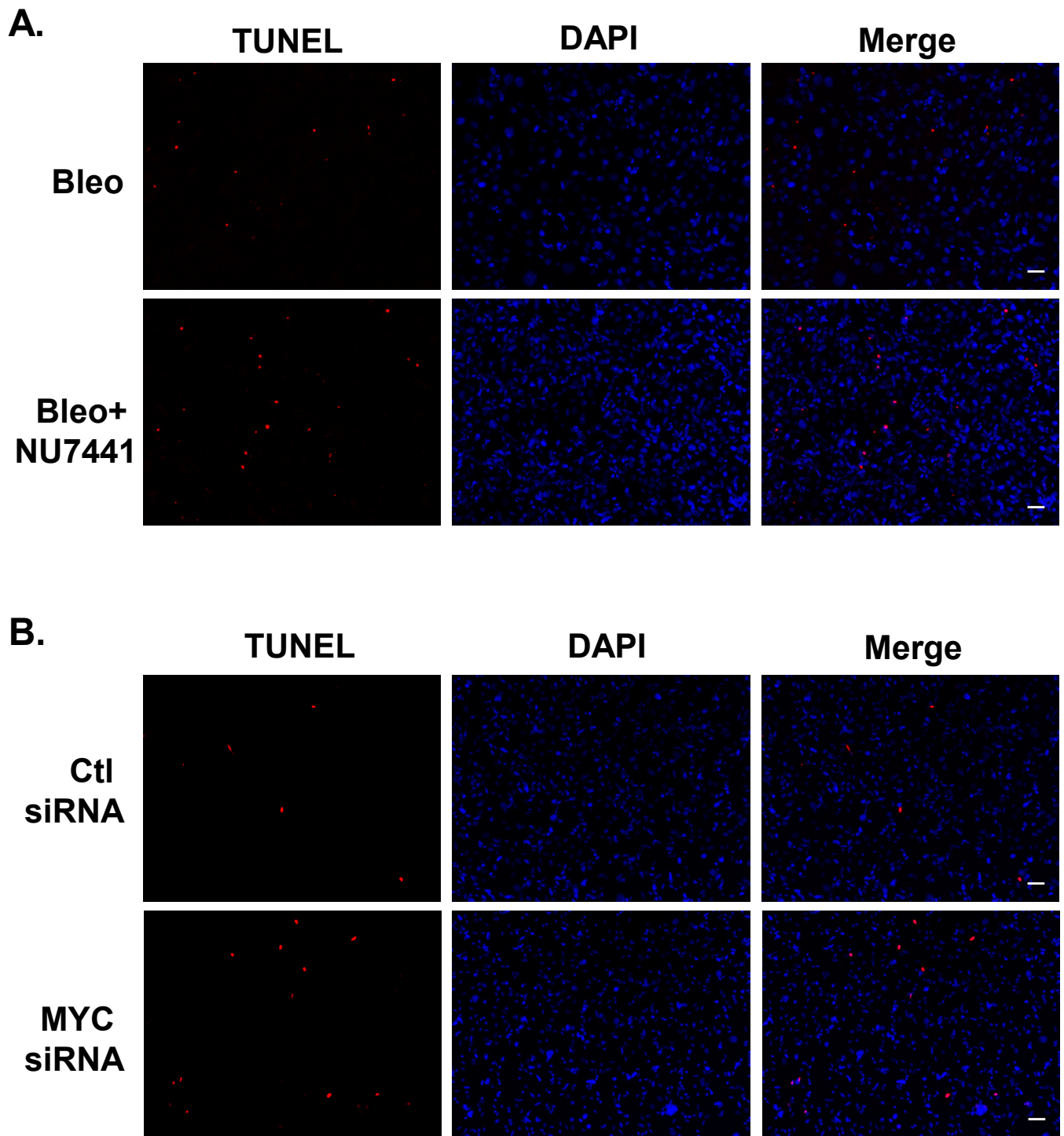


Figure S6. Apoptotic response following DNA-PK inhibition or MYC knockdown in MB-231 cells exposed to bleomycin

(**A**) TUNEL stain (red) of MB-231 cells exposed to 0.05 mg/mL bleomycin (Bleo) or DNA-PK inhibitor (NU-7441, 0.5 μ M) and Bleo for 72 hours. Nuclei were counterstained with DAPI (blue). Scale bars, 50 μ m. Images are representative of experiments run in triplicate. (**B**) TUNEL stain (red) of MB-231 cells exposed to control (Ctl) or MYC siRNA for 96 hours with concurrent bleomycin (Bleo) exposure for 72 hours. Nuclei were counterstained with DAPI (blue). Scale bars, 50 μ m. Images are representative of experiments run in triplicate.