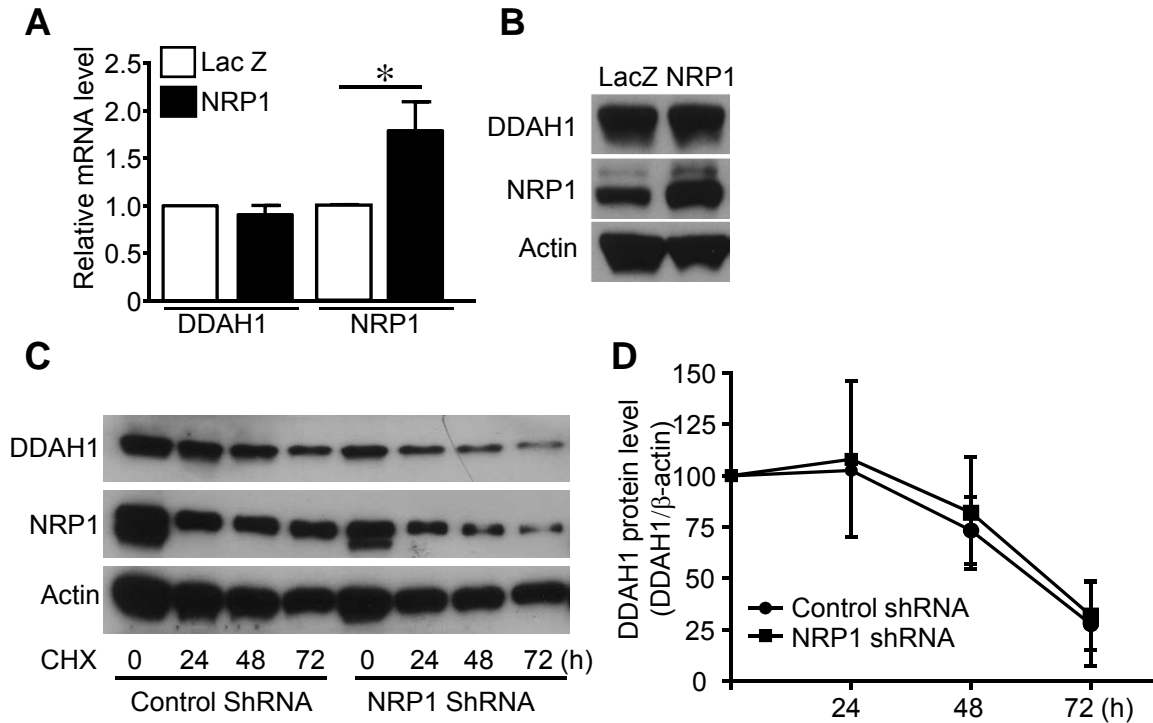


## Supplemental Figure 1



**Supplemental Fig. 1. Effect of NRP1 on protein stability of DDAH1 in vascular endothelial cells.** A-B. HUVECs were infected with lentivirus expressing LacZ or NRP1. Expression of DDAH1 and NRP1 were examined with qPCR (A) and western blotting (B). C-D. HUVECs were infected with lentivirus expressing control shRNA or NRP1 shRNA and then administrated with cycloheximide (CHX, 20  $\mu$ g/mL). Protein lysates collected at 24h, 48h and 72 h were subjected to Western blotting with the indicated antibodies (C). The blots were scanned and quantified with the control group which was normalized to 1 (D). For A and C, n=3 for each group; for B and C, Images are representative of three independent experiments. \*,  $p < 0.05$ .

## Supplemental Table 1. Primers for qPCR

human NRP1	Forward: gactggggctcagaatg Reverse: ctatgaccgtgggctttct
human DDAH1	Forward: gcaactttagatggcggaga Reverse: ctttggaaggcccaaa
human DDAH2	Forward: ggactcccttccaccaa Reverse: ttctgttctcacctgtctcc
human $\beta$ -actin	Forward: ccaaccgagagaagatga Reverse: ccagaggcgtacagggatag
Mouse NRP1	Forward: tctgggaaactggtatatctatga Reverse: cattccagagcaaggataatctg
Mouse DDAH1	Forward: agtaccagaaagcgcaaag Reverse: aagccgtccacctttcc
Mouse 18S	Forward: tgtggtgtgaggaaagcag Reverse: tccatccttcacatccttc