

Online Supporting Information

FIG. S1. Additional Western blot images for identification of the SPATA22-interaction domain in MEIOB. **A, B**) Co-IP analysis of the remaining 11 MEIOB deletions (Fig. 1C) and SPATA22. *, antibody heavy chain.

FIG. S2. Additional Western blot images for identification of the MEIOB-interaction domain in SPATA22. **A, B**) Co-IP analysis of the remaining 8 SPATA22 deletions (Fig. 3A) and MEIOB.

FIG. S3. Associations between SPATA22 and the RPA1-RPA2-RPA3 trimer. **A-C**) Co-IP analysis of the interactions between SPATA22 and RPA1 (**A**), RPA2 (**B**) and RPA3 (**C**). Co-IP results of interactions between SPATA22 variants and RPA1 are summarized in Fig. 3A. *, antibody heavy chain. **, this band (~37 kDa) is likely due to translation initiation from an internal ATG codon in SPATA22. This band also appears in Fig. 3B.

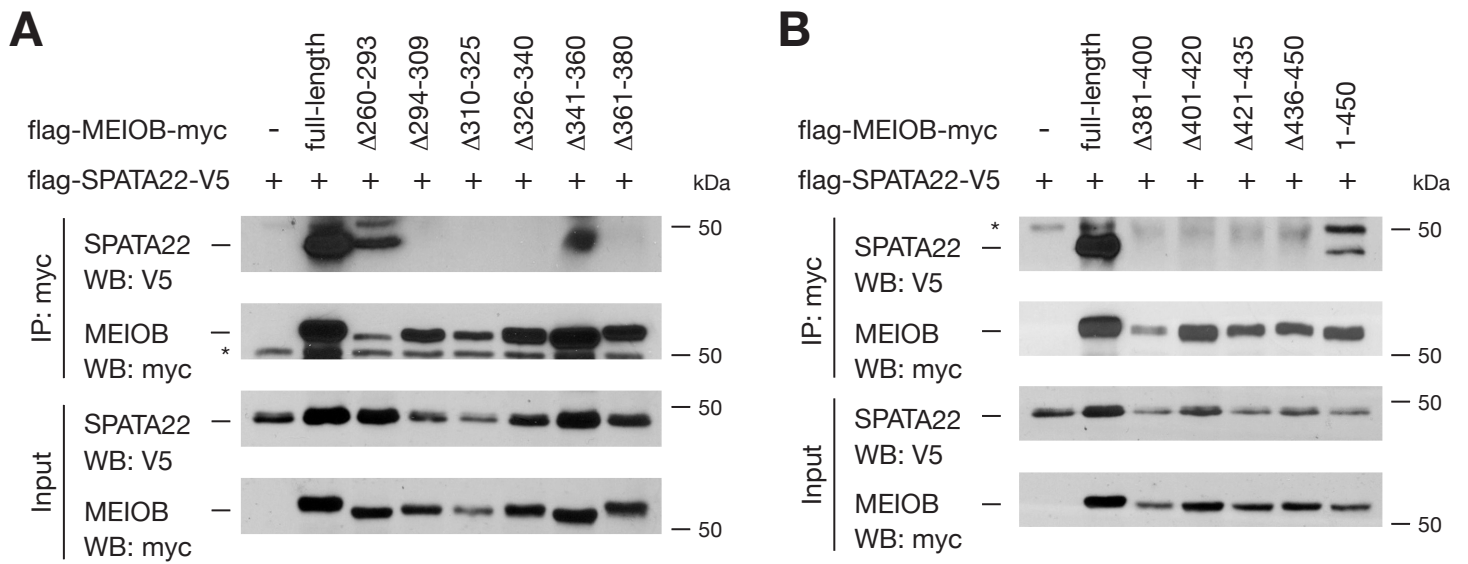


Figure S1

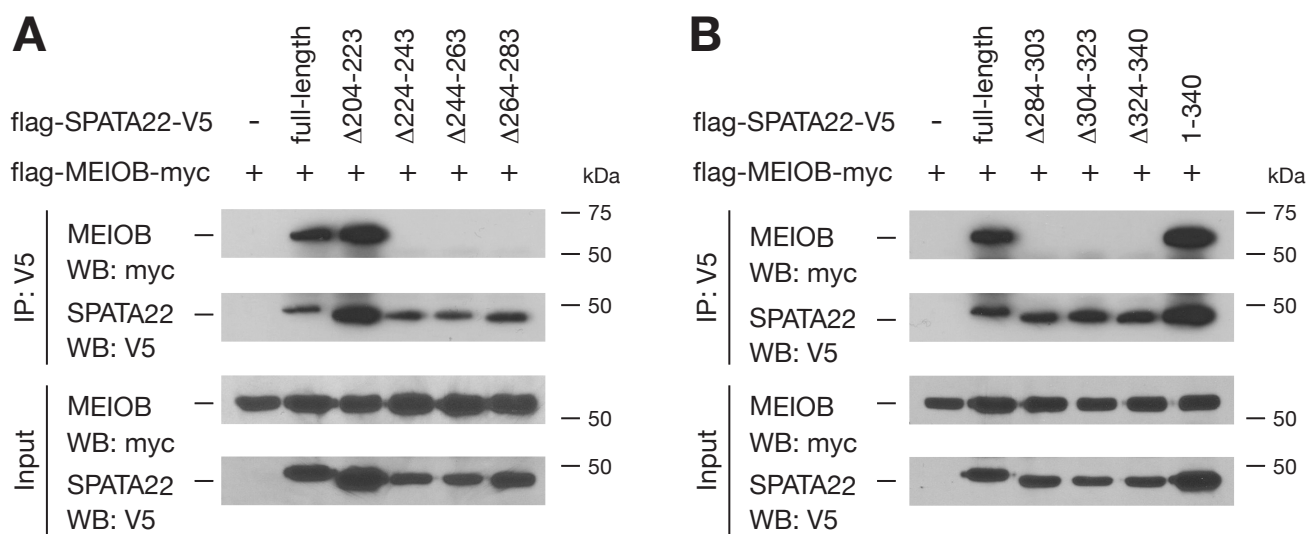


Figure S2

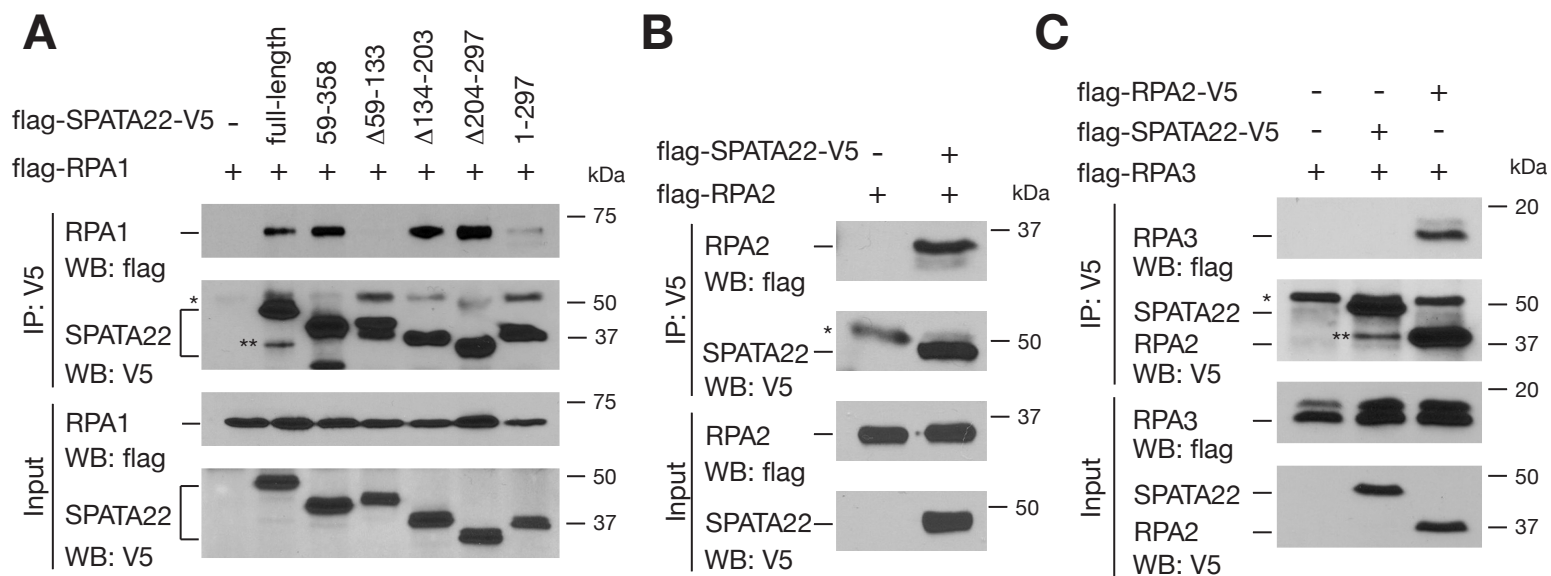


Figure S3