

Supplementary Material

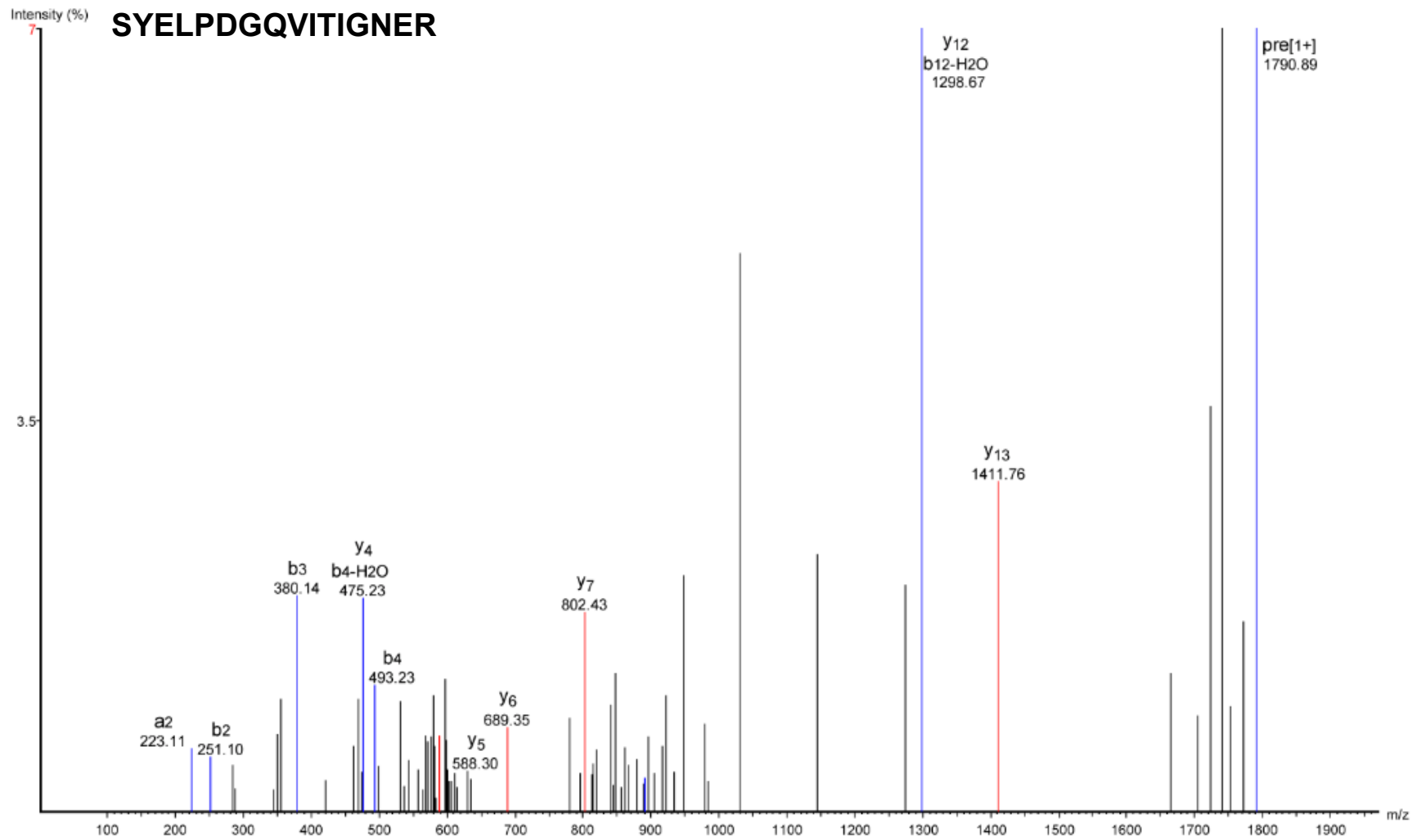
Table S1 The protein and Peptides information identified by MS/MS analysis.

Table S1. The protein and Peptides information identified by MS/MS.

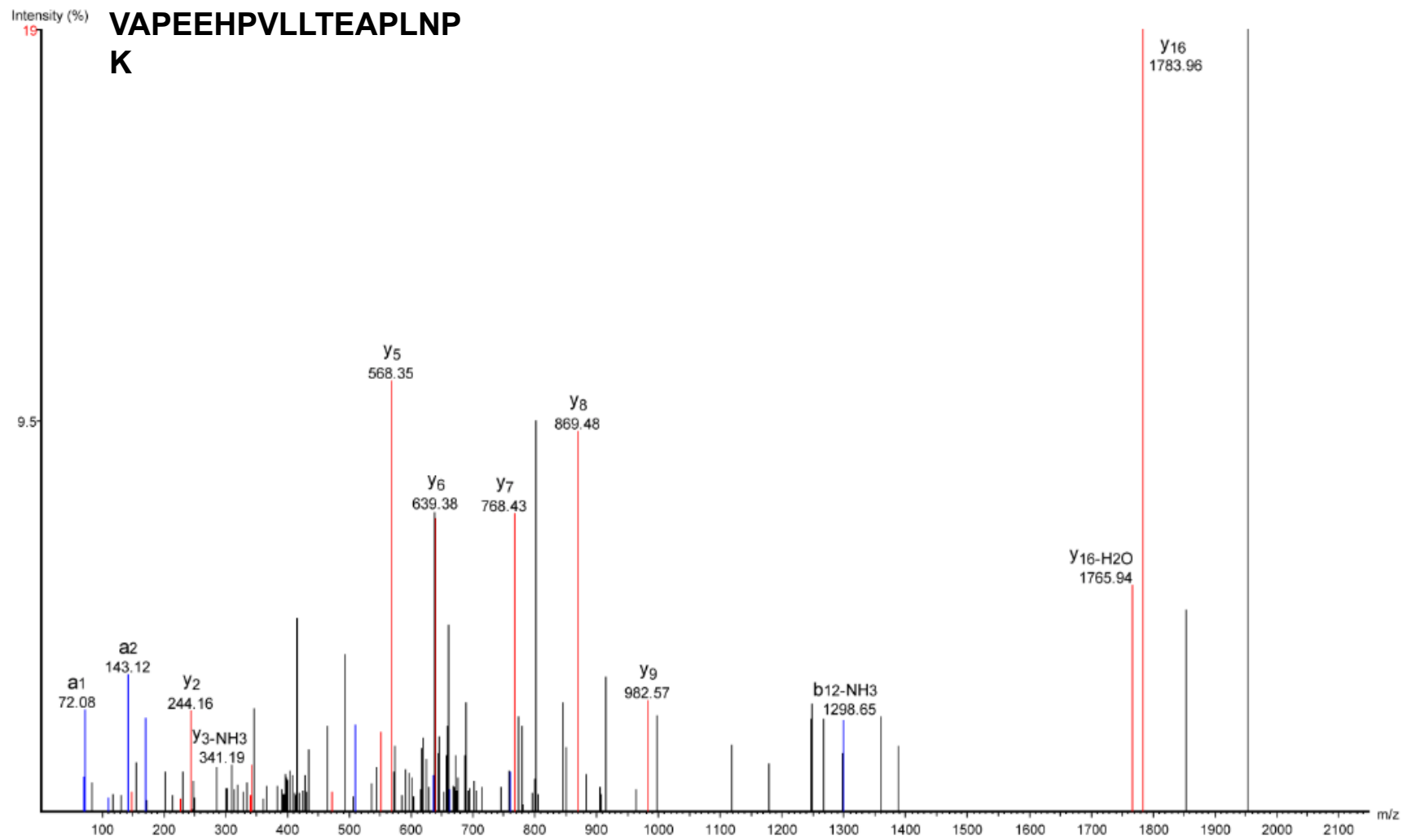
Cell line	Treatment	Protein Group	Protein ID	Protein Accession	Peptide	Unique	-10lgP	Mass	Length	ppm	m/z	z	RT	Scan	#Spec	Start	End	PTM		
A2058	unstimulated	3	119661	P60709 ACTB_HUMAN (β -actin)	K.SYELPDGQVITIGNER.F	N	98,36	1789,88	16	0,5	1790,9	1	-	F27:80521	19	239	254			
					R.VAPEEHPVLLTEAPLNPK.A	N	84,57	1953,06	18	1,6	1954,1	1	-	F26:66857	16	96	113			
					R.GYSFTTAAER.E	N	77,98	1131,52	10	2,6	1132,5	1	-	F27:75738	33	197	206			
					K.QEYDESGPSIVHR.K	N	76,57	1515,7	13	0,8	1516,7	1	-	F7:17553	11	360	372			
					K.AGFAGDDAPR.A	N	71,26	975,441	10	1,8	976,45	1	-	F27:74647	17	19	28			
					R.AVFPSIVGRPR.H	N	69,02	1197,7	11	1,5	1198,7	1	-	F27:77396	14	29	39			
					K.DSYVGDEAQSQR.G	N	67,08	1353,62	12	3,3	1354,6	1	-	F27:73773	2	51	62			
					K.EITALAPSTM(+15.99)K.I	N	56,31	1176,61	11	1,2	1177,6	1	-	F28:87183	12	316	326	Oxidation (M)		
					V.FPSIVGRPR.H	N	51,48	1027,59	9	3,7	1028,6	1	-	F27:77387	12	31	39			
					R.DLTDYLM(+15.99)K.I	N	45,81	1013,47	8	1,6	1014,5	1	-	F27:79586	9	184	191	Oxidation (M)		
		F.PSIVGRPR.H	N	41,49	880,524	8	1,2	881,53	1	-	F27:77392	6	32	39						
		R.AVFPSIVGR.P	N	38,14	944,544	9	1	945,55	1	-	F27:79072	7	29	37						
				79	119973	P22626-2 ROA2_HUMAN (Heterogeneous nuclear ribonucleoproteins A2/B1)	R.GGNFGFGDSR.G	Y	40,18	1012,44	10	-0,6	1013,4	1	-	F1:348	8	192	201	
		R.GGGNFGPGPGSNFR.G	Y				35,07	1376,62	15	2,3	1377,6	1	-	F8:22395	7	202	216			
K.IDTIEITDR.Q	Y	31,45	1187,64				10	-1	1188,6	1	-	F1:751	5	126	135					
A2058	serum stimulated	4	119659	P63261 ACTG_HUMAN (γ -actin)	R.VAPEEHPVLLTEAPLNPK.A	N	84,57	1953,06	18	1,6	1954,1	1	-	F26:66857	16	96	113			
					R.GYSFTTAAER.E	N	77,98	1131,52	10	2,6	1132,5	1	-	F27:75738	33	197	206			
					K.AGFAGDDAPR.A	N	71,26	975,441	10	1,8	976,45	1	-	F27:74647	17	19	28			
					R.AVFPSIVGRPR.H	N	69,02	1197,7	11	1,5	1198,7	1	-	F27:77396	14	29	39			
					K.DSYVGDEAQSQR.G	N	67,08	1353,62	12	3,3	1354,6	1	-	F27:73773	2	51	62			
					K.EITALAPSTMK.I	N	58,31	1160,61	11	2,5	1161,6	1	-	F27:77306	5	316	326			
					R.DLTDYLMK.I	N	46,12	997,479	8	-1,8	998,48	1	-	F27:82396	6	184	191			
				14	119776	Q562R1 ACTBL_HUMAN (β -actin-like protein 2)	R.SYELPDGQVITIGNER.F	N	98,36	1789,88	16	0,5	1790,9	1	-	F27:80521	19	240	255	
		V.PIYEGYALPHAILR.L	N				72,99	1611,88	14	0,9	1612,9	1	-	F27:80647	3	165	178			
		R.TTGIVMDSGD.G	N				60,34	994,428	10	0,1	995,44	1	-	F27:77623	1	149	158			
		I.YEGYALPHAILR.L	N				53,11	1401,74	12	1	1402,7	1	-	F26:67541	2	167	178			
		R.DLTDYLMK.I	N				46,12	997,479	8	-1,8	998,48	1	-	F27:82396	6	185	192			
		K.IKIIAPPERK.Y	N				45,56	1163,74	10	0,8	1164,7	1	-	F26:62401	1	328	337			
		V.GDEAQSQR.R	N				34,52	733,324	7	-0,8	734,33	1	-	F26:62047	4	56	62			
		D.GQVITIGNER.F	N				31,46	1085,58	10	3,4	1086,6	1	-	F27:75874	2	246	255			
		R.VAPDEHPILLTEAPLNPK.I	Y				25,35	1953,06	18	-0,2	1954,1	1	-	F5:11617	1	97	114			
		E.KIWYHTFYNELR.V	Y				24,21	1668,84	12	1,6	1669,9	1	-	F27:82758	1	85	96			
				1	119658	P08670 VIME_HUMAN (vimentin)	R.DGQVINETSQHHDDL.E	Y	81,15	1835,79	16	0,9	1836,8	1	-	F27:75635	21	451	466	
		R.EYQDLLNVK.M	N				72,59	1120,58	9	-1,8	1121,6	1	-	F26:66771	18	382	390			
		K.FADLSEAAANR.N	N				61,04	1092,52	10	-0,4	1093,5	1	-	F6:14147	15	295	304			
		R.QDQVDNASLAR.L	N				56,89	1087,53	10	-1	1088,5	1	-	F7:17283	11	208	217			
		K.VELQELNDR.F	N				54,22	1114,56	9	0,9	1115,6	1	-	F27:76106	15	105	113			
R.DNLAEDIMR.L	N	54,09	1075,5				9	2	1076,5	1	-	F28:90052	13	176	184					
R.LGDLYEEMREL.R	N	43,38	1651,79				13	0	1652,8	1	-	F26:67323	3	146	158					
					K.LLEGEESR.I	N	40,34	931,461	8	4	932,47	1	-	F27:74337	12	403	410			

Supplementary Material

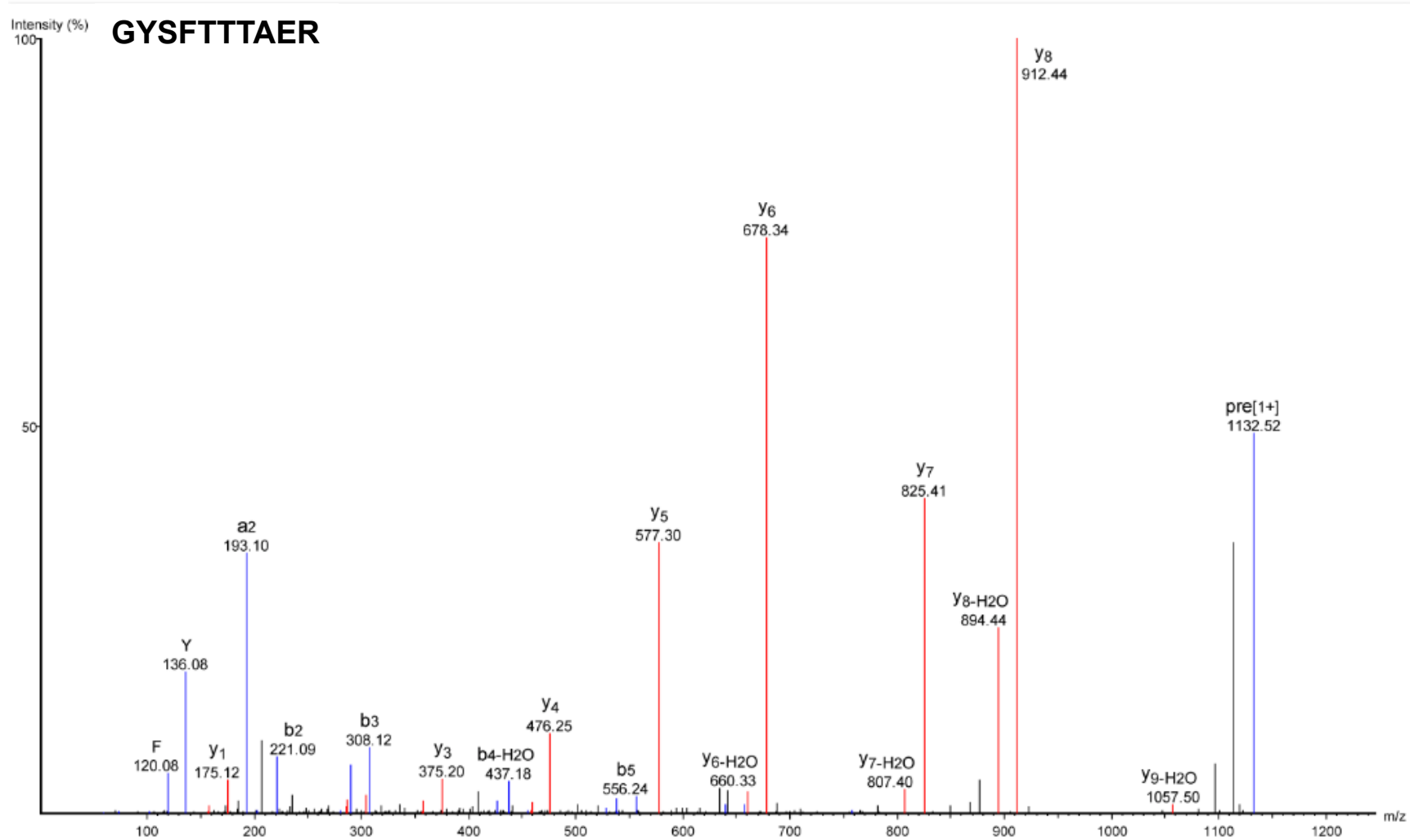
Figure S1 MS/MS spectra from all peptides identified on Table S1.



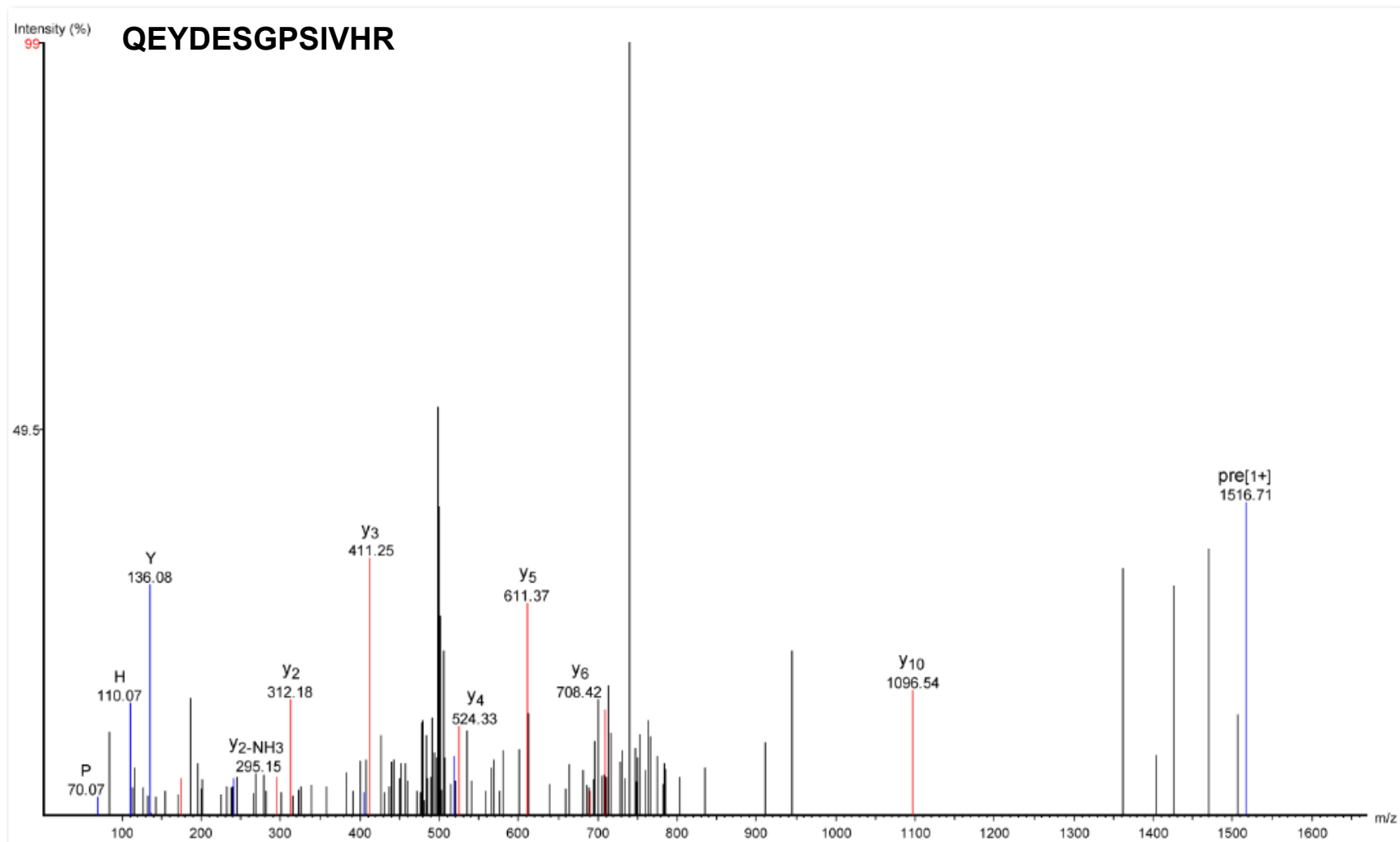
MS/MS spectrum of the peptide SYELPDGQVITIGNER identified from actin (P60709). Deisotoped peptide ion m/z: 1790.89⁺¹.



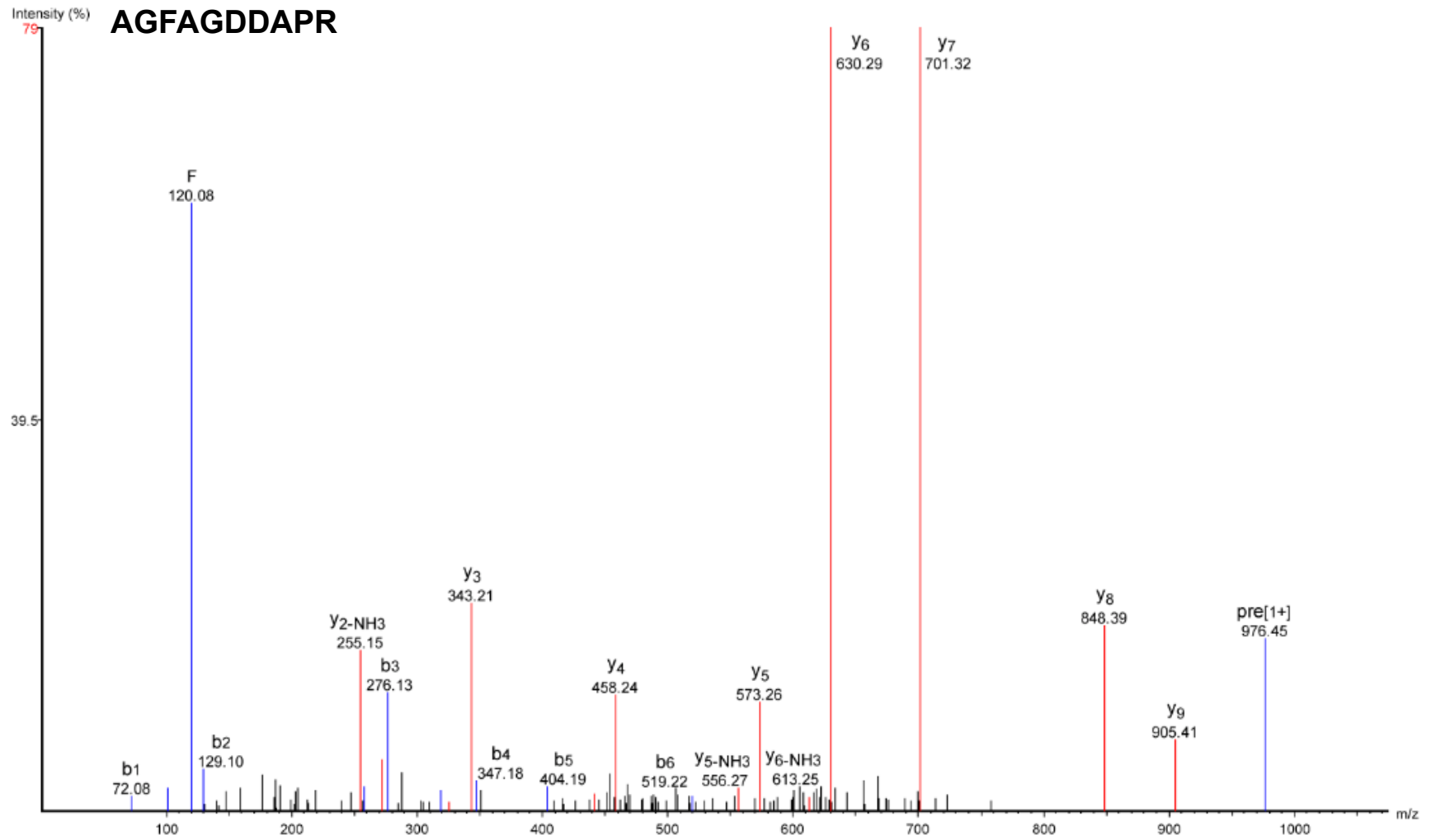
MS/MS spectrum of the peptide VAPEEHPVLLTEAPLNPK identified from actin (P60709). Deisotoped peptide ion m/z: 1954.06⁺¹.



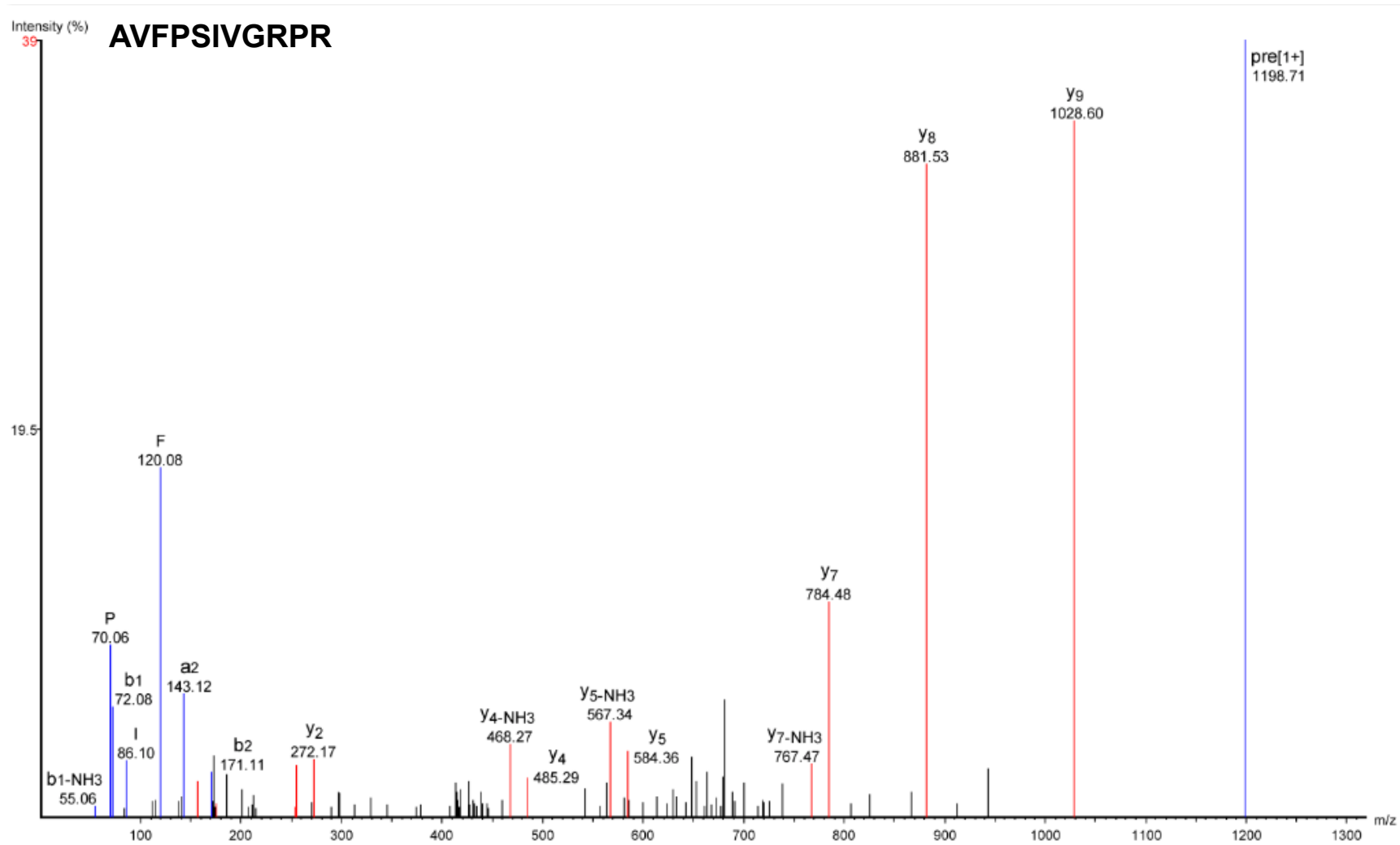
MS/MS spectrum of the peptide GYSFTTTAER identified from actin (P60709). Deisotoped peptide ion m/z: 1132.52⁺¹.



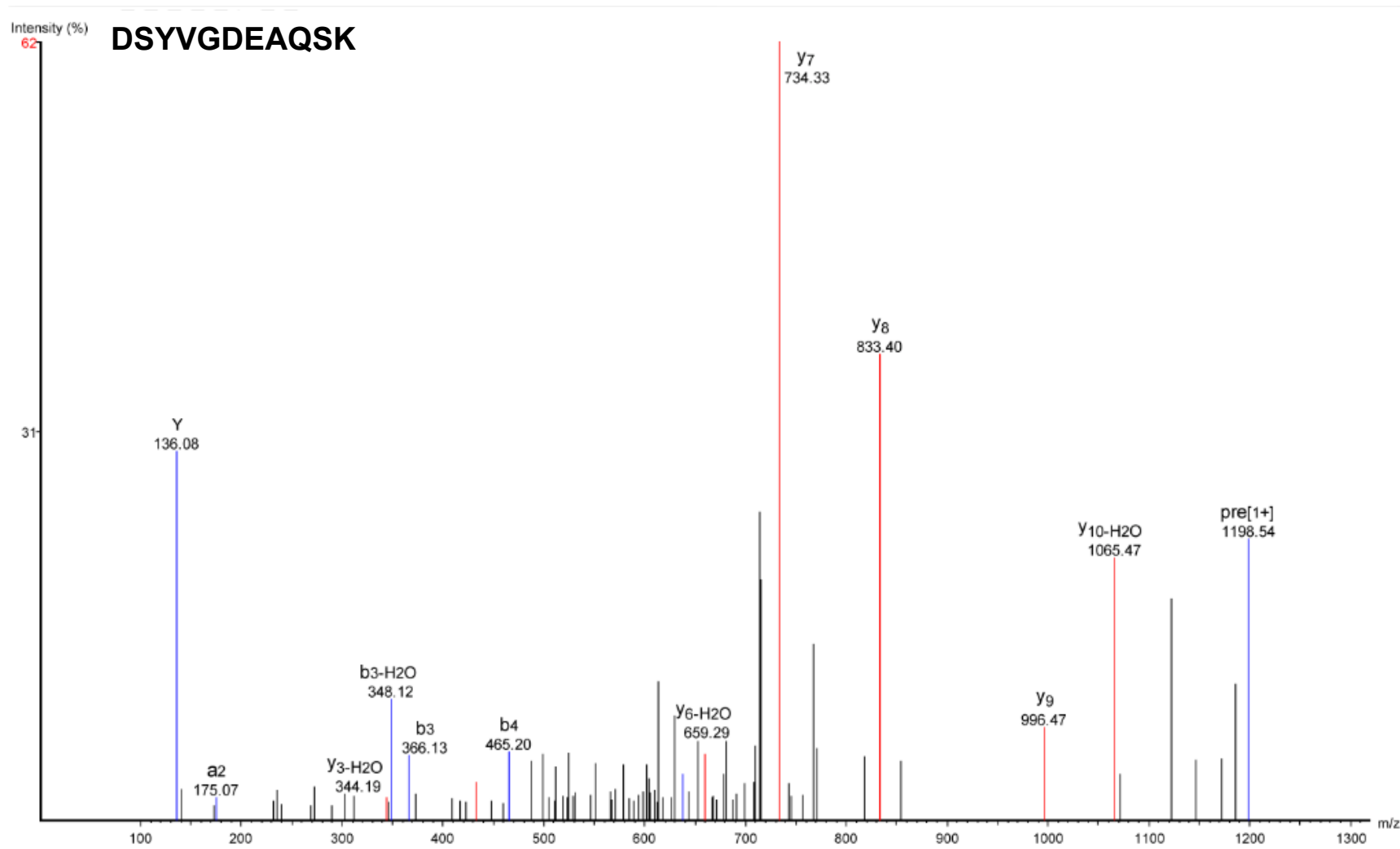
MS/MS spectrum of the peptide QEYDESGPSIVHR identified from actin (P60709). Deisotoped peptide ion m/z : 1516.71⁺¹.



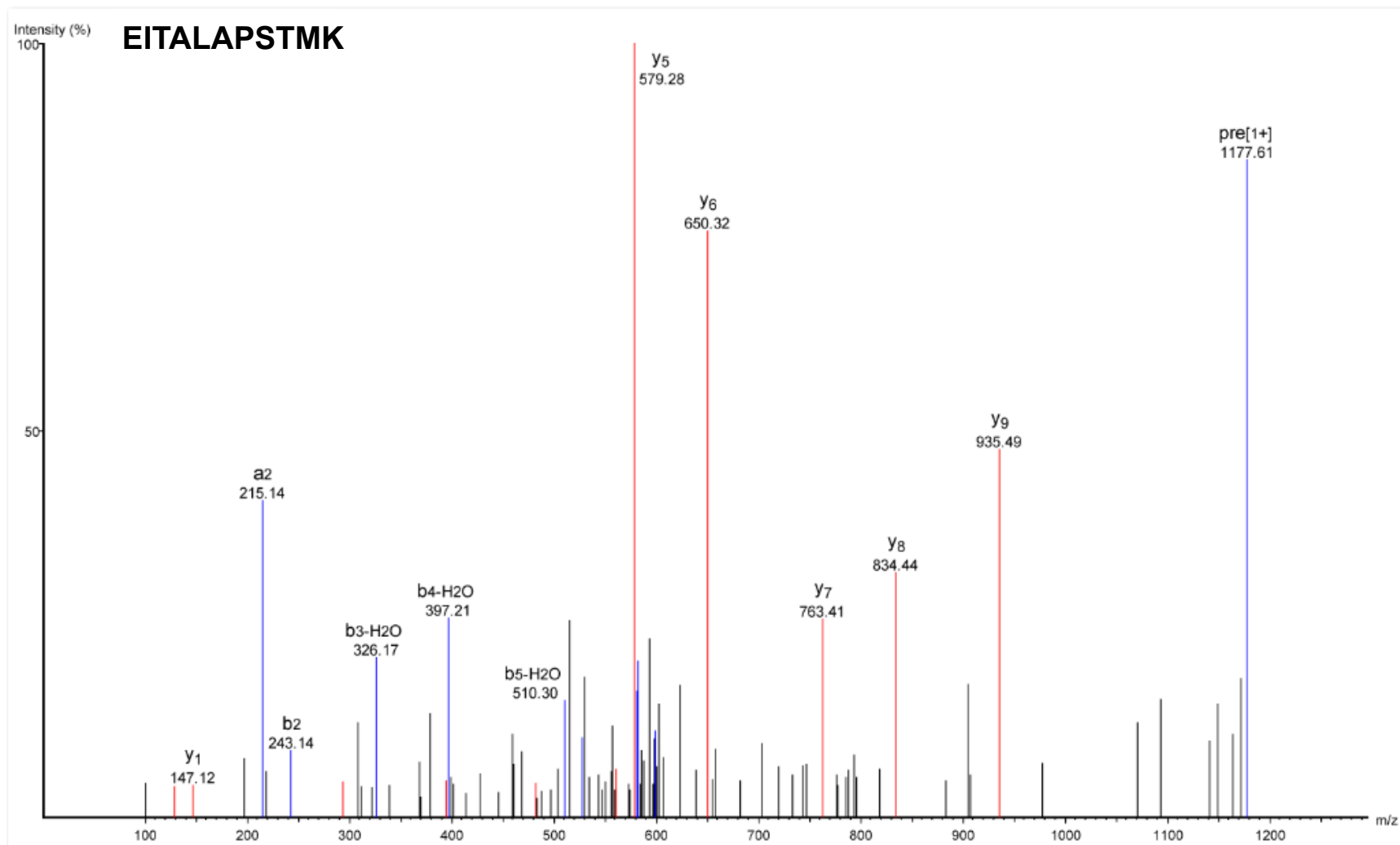
MS/MS spectrum of the peptide AGFAGDDAPR identified from actin (P60709). Deisotoped peptide ion m/z: 976.45⁺¹.



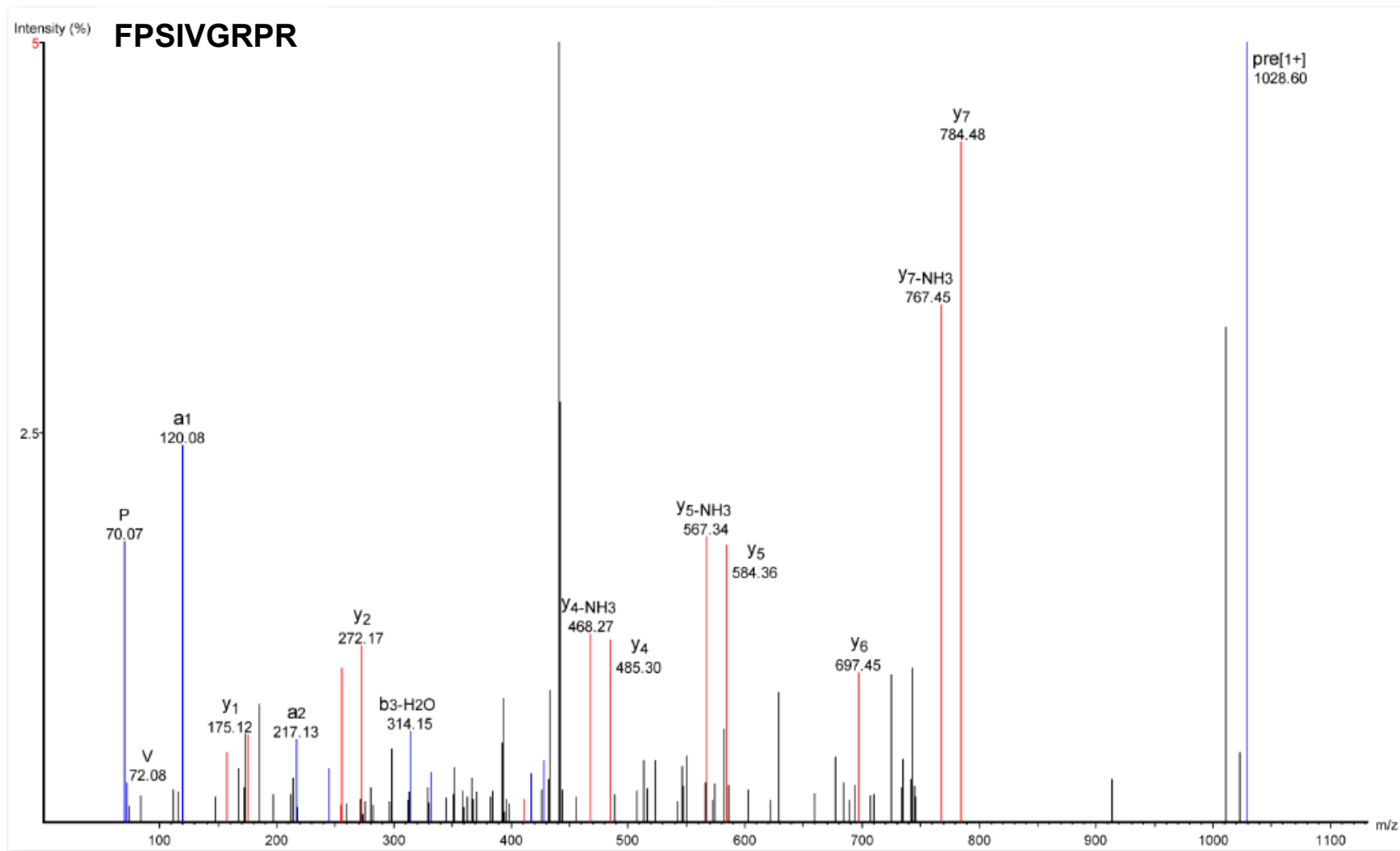
MS/MS spectrum of the peptide AVFPSIVGRPR identified from actin (P60709). Deisotoped peptide ion m/z: 1198.71⁺¹.



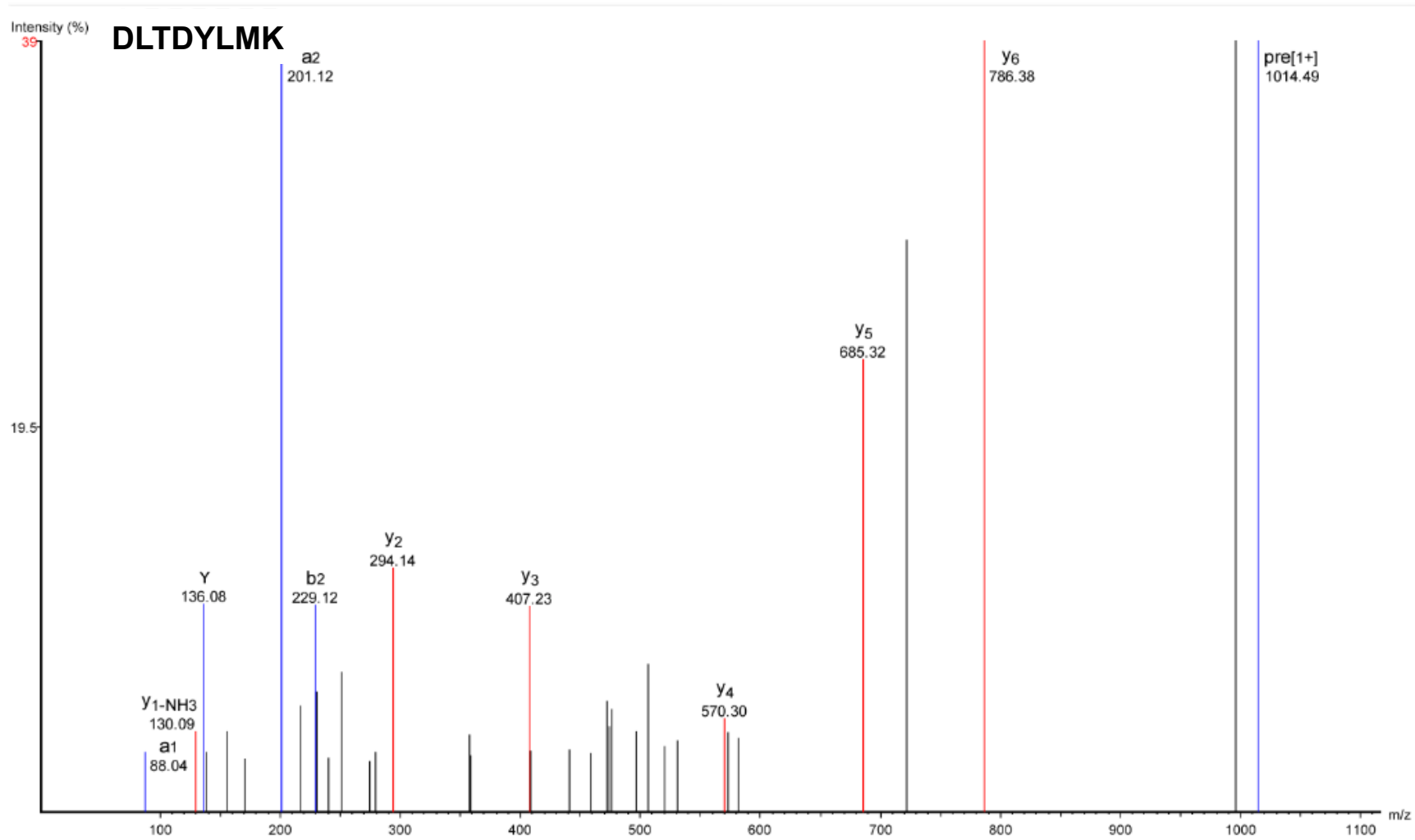
MS/MS spectrum of the peptide DSYVGDEAQS K identified from actin (P60709). Deisotoped peptide ion m/z: 1198.54⁺¹.



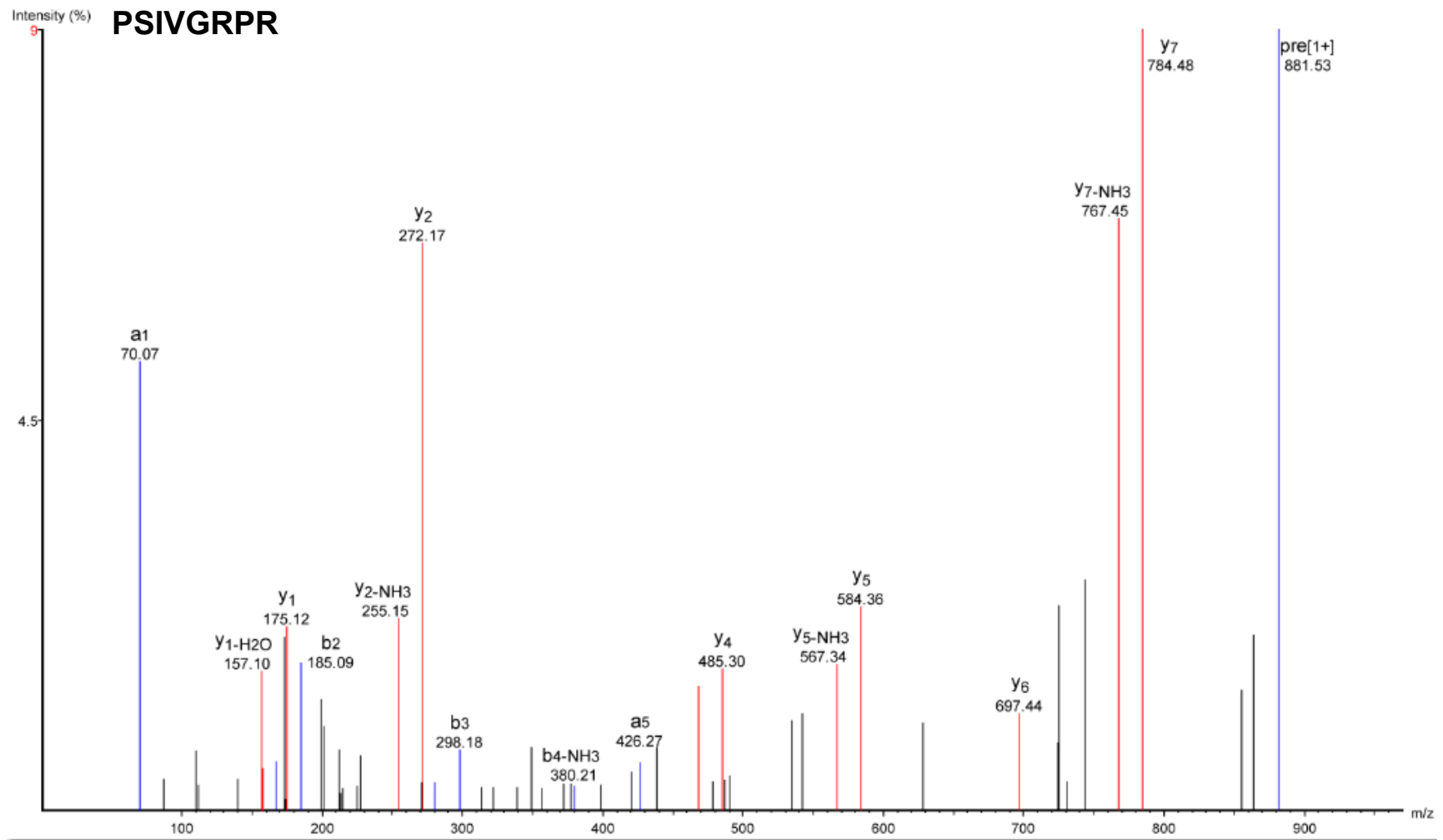
MS/MS spectrum of the peptide EITALAPSTMK identified from actin (P60709). Deisotoped peptide ion m/z: 1177.61⁺¹.



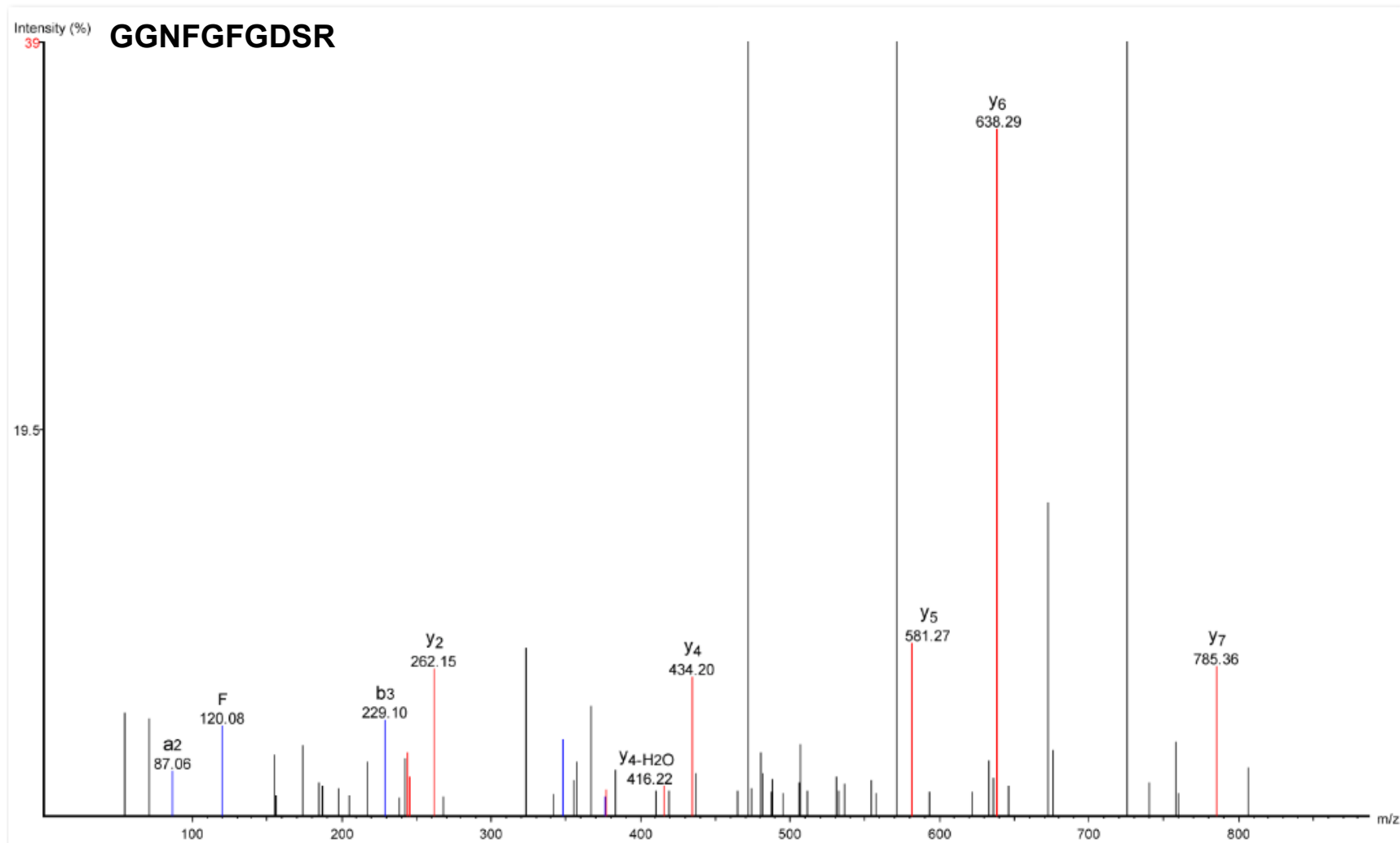
MS/MS spectrum of the peptide FPSIVGRPR identified from actin (P60709). Deisotoped peptide ion m/z: 1028.60⁺¹.



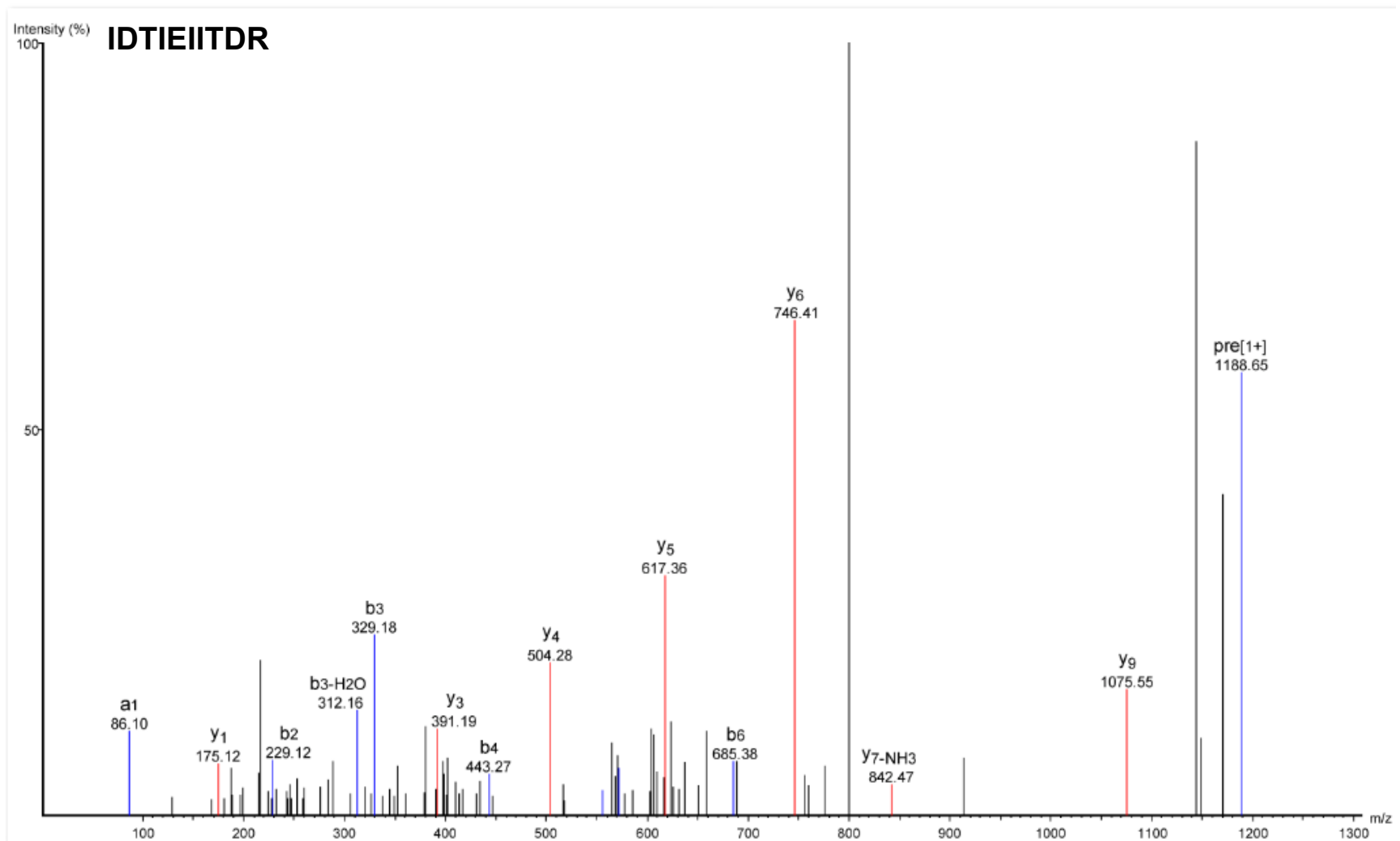
MS/MS spectrum of the peptide DLTDYLMK identified from actin (P60709). Deisotoped peptide ion m/z: 1014.49⁺¹.



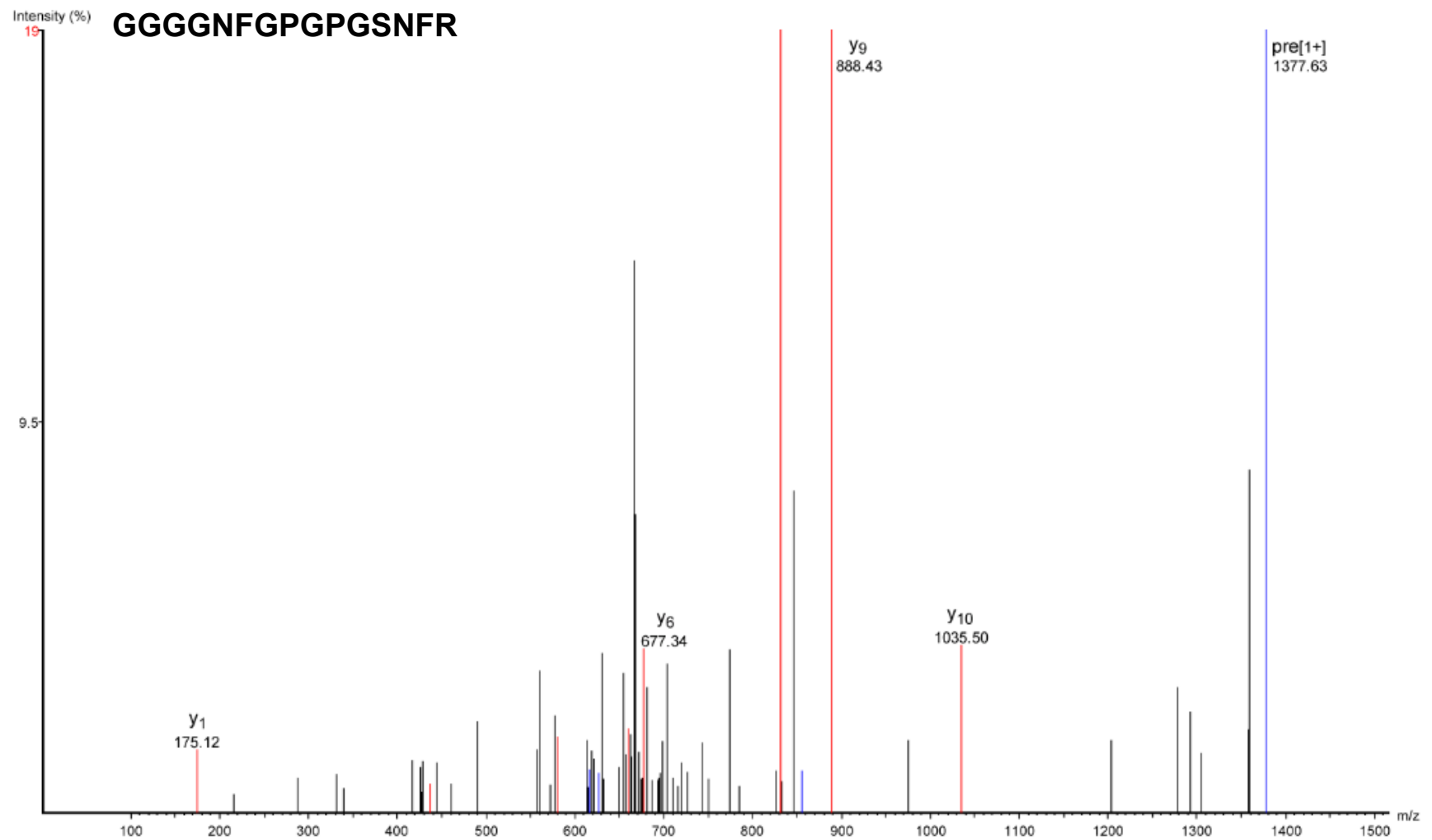
MS/MS spectrum of the peptide PSIVGRPR identified from actin (P60709). Deisotoped peptide ion m/z: 881.53⁺¹.



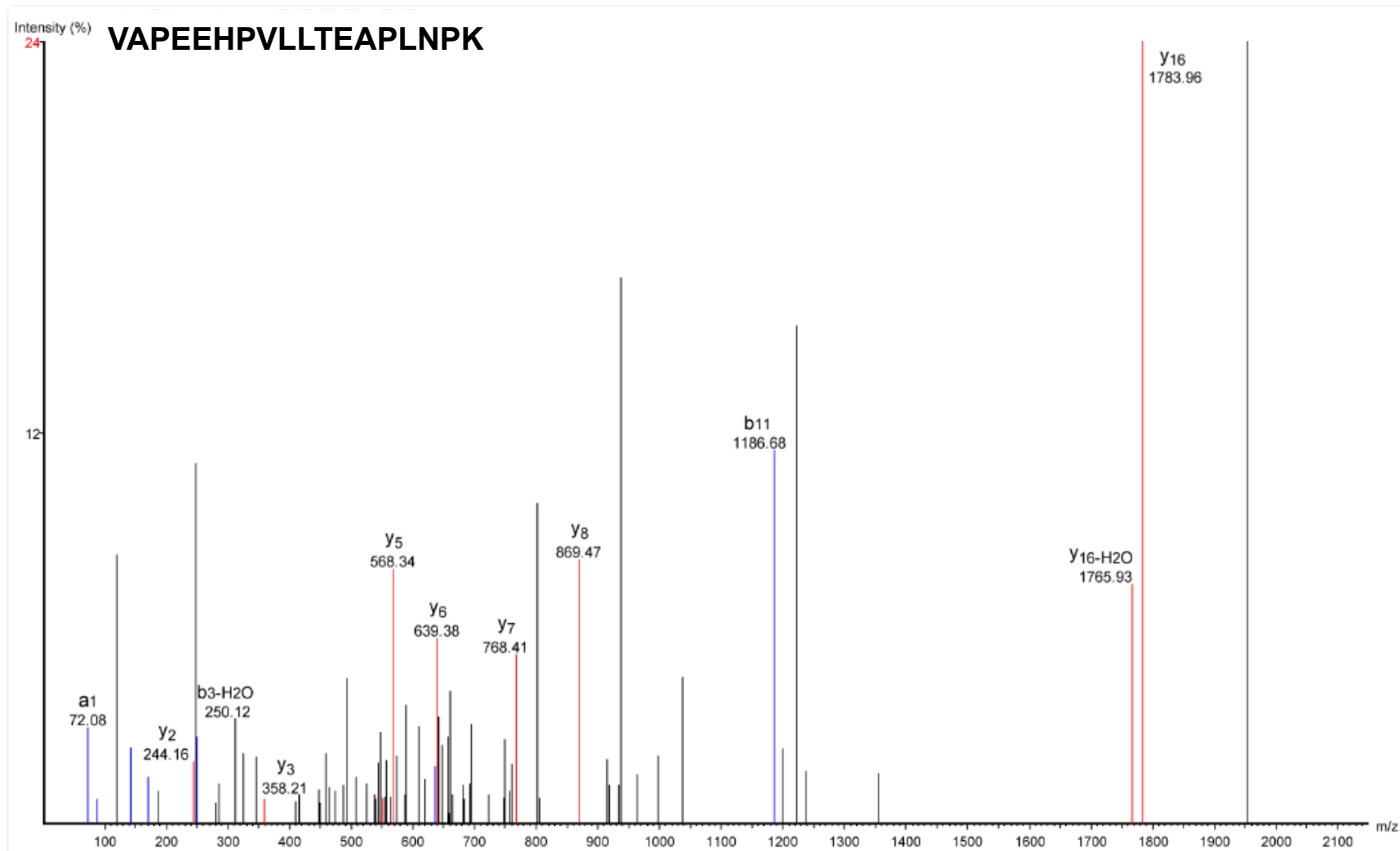
MS/MS spectrum of the peptide GGNFGFGDSR identified from heterogeneous nuclear ribonucleoprotein (P22626). Deisotoped peptide ion m/z: 1013.44⁺¹



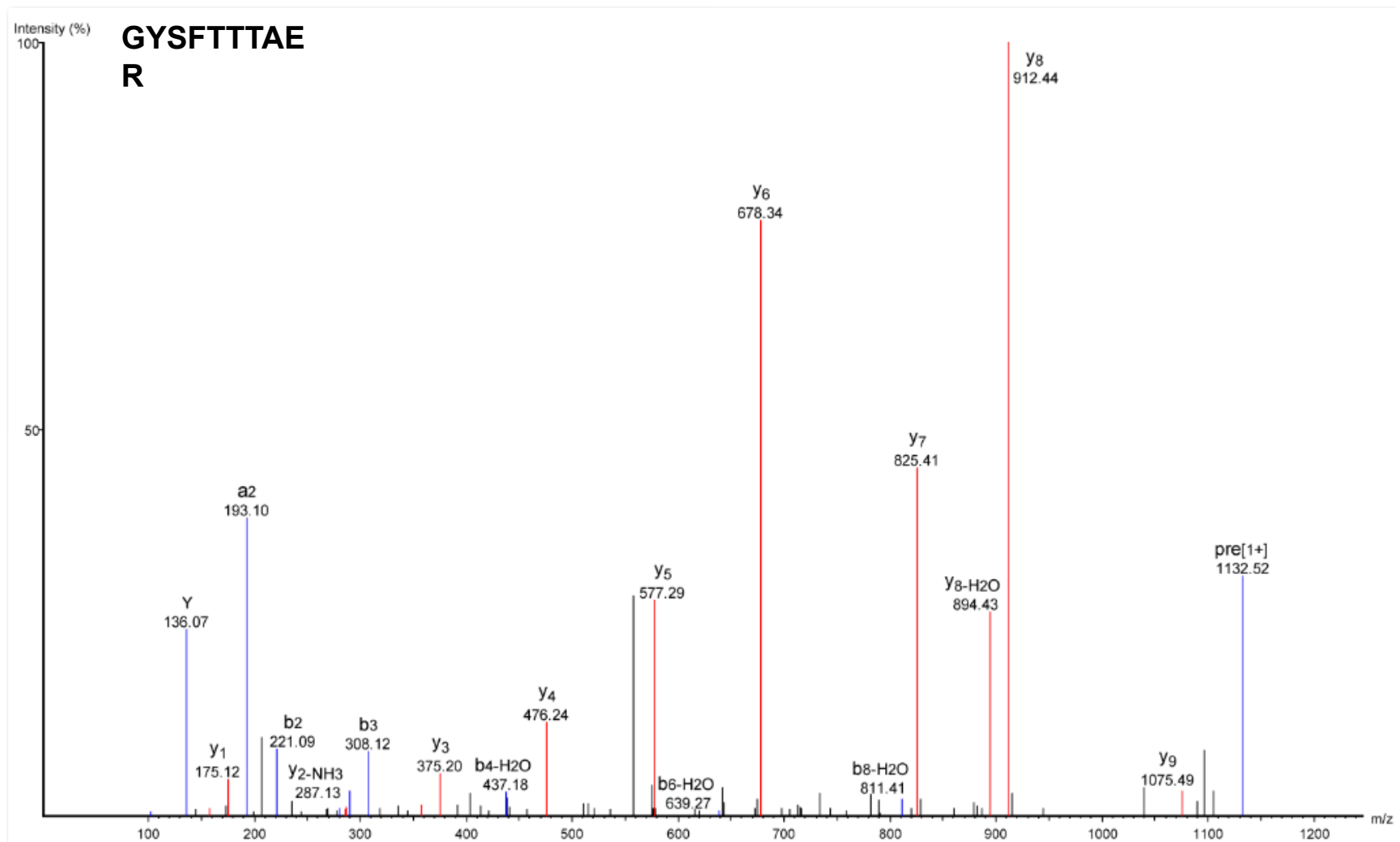
MS/MS spectrum of the peptide IDTIEIITDR identified from heterogeneous nuclear ribonucleoprotein (P22626). Deisotoped peptide ion m/z: 1188.65⁺¹.



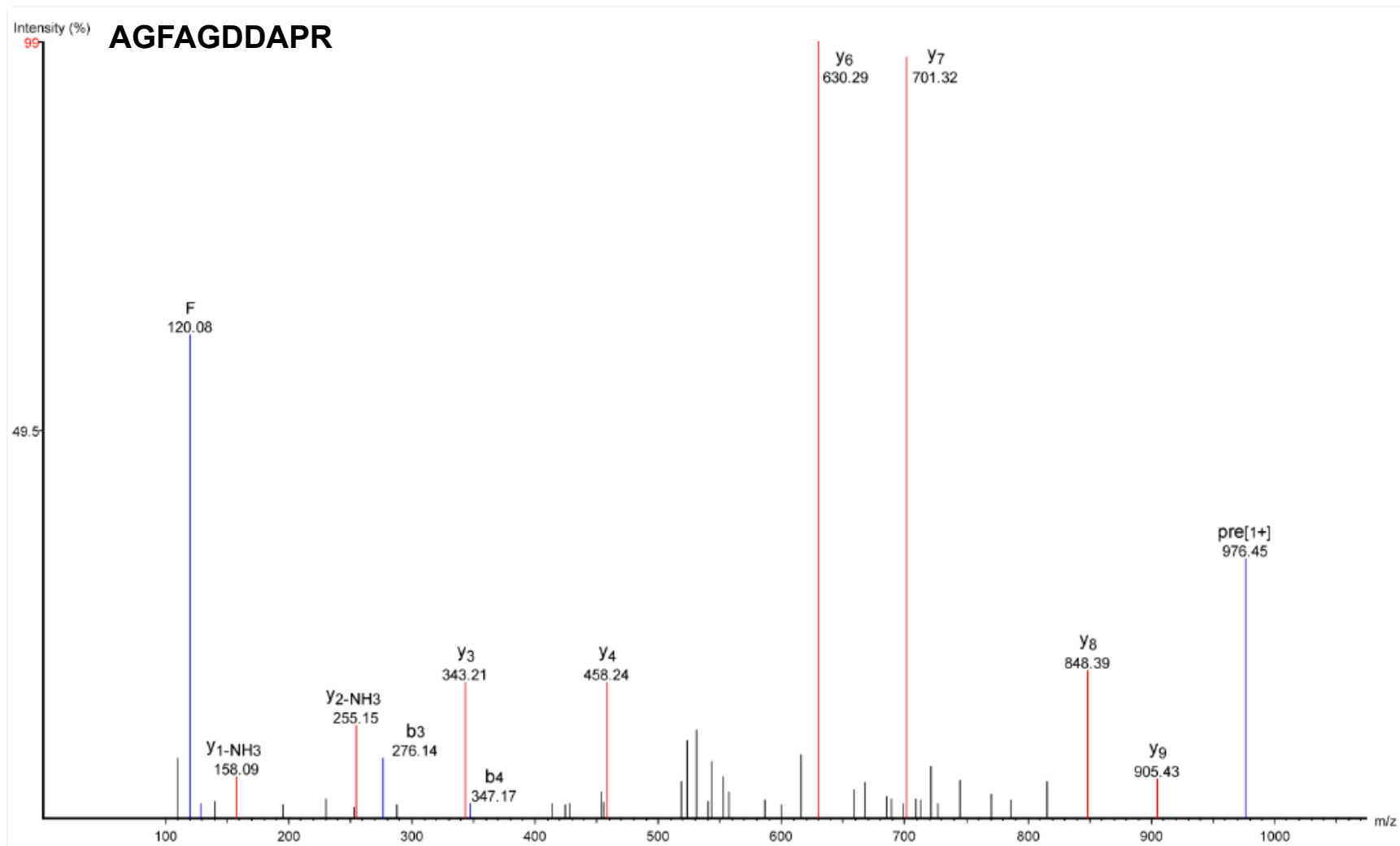
MS/MS spectrum of the peptide GGGNFGPGGSNFR identified from heterogeneous nuclear ribonucleoprotein (P22626). Deisotoped peptide ion m/z : 1377.63⁺¹.



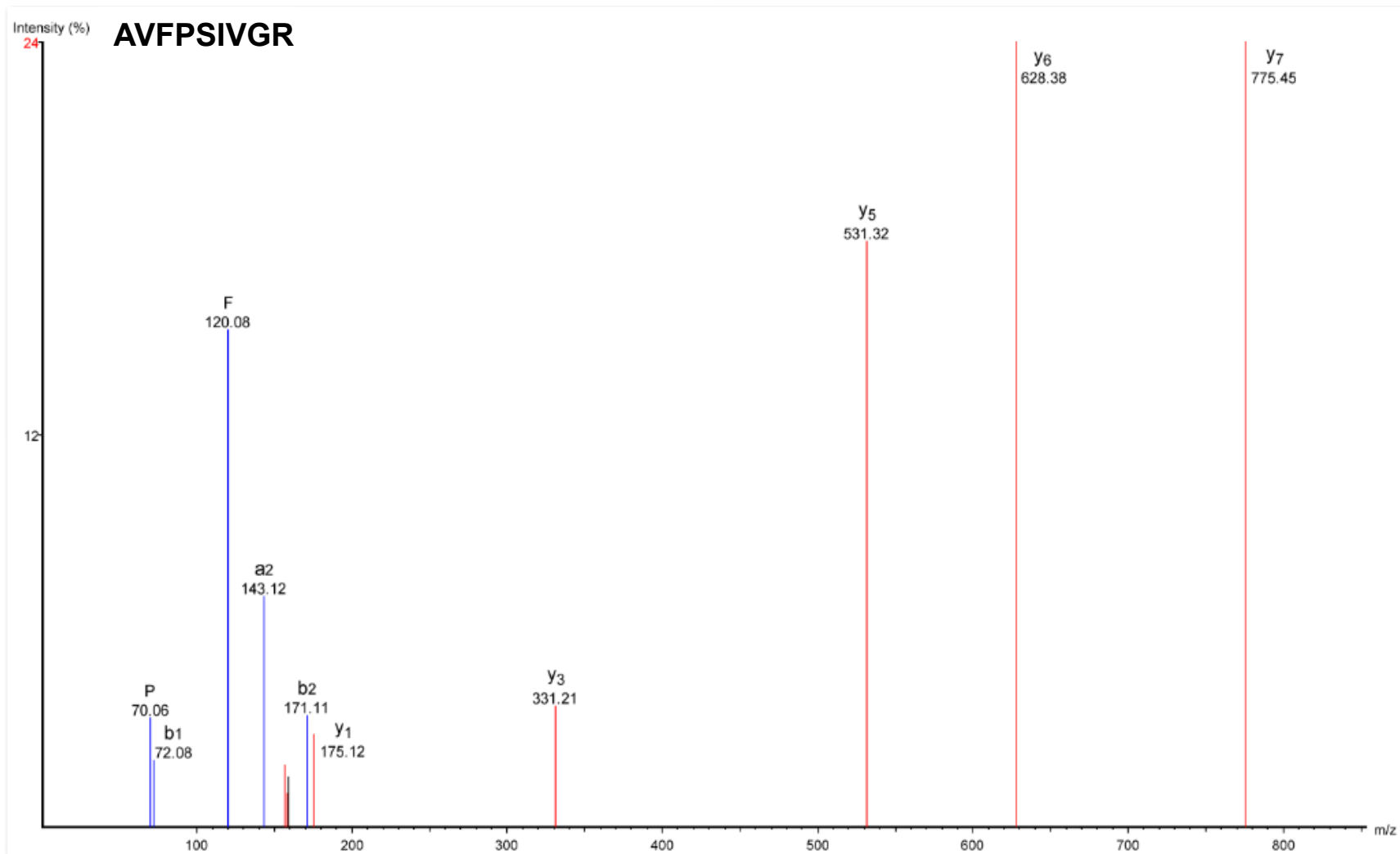
MS/MS spectrum of the peptide VAPEEHPVLLTEAPLNPK identified from actin (P63261). Deisotoped peptide ion m/z : 1954.06⁺¹.



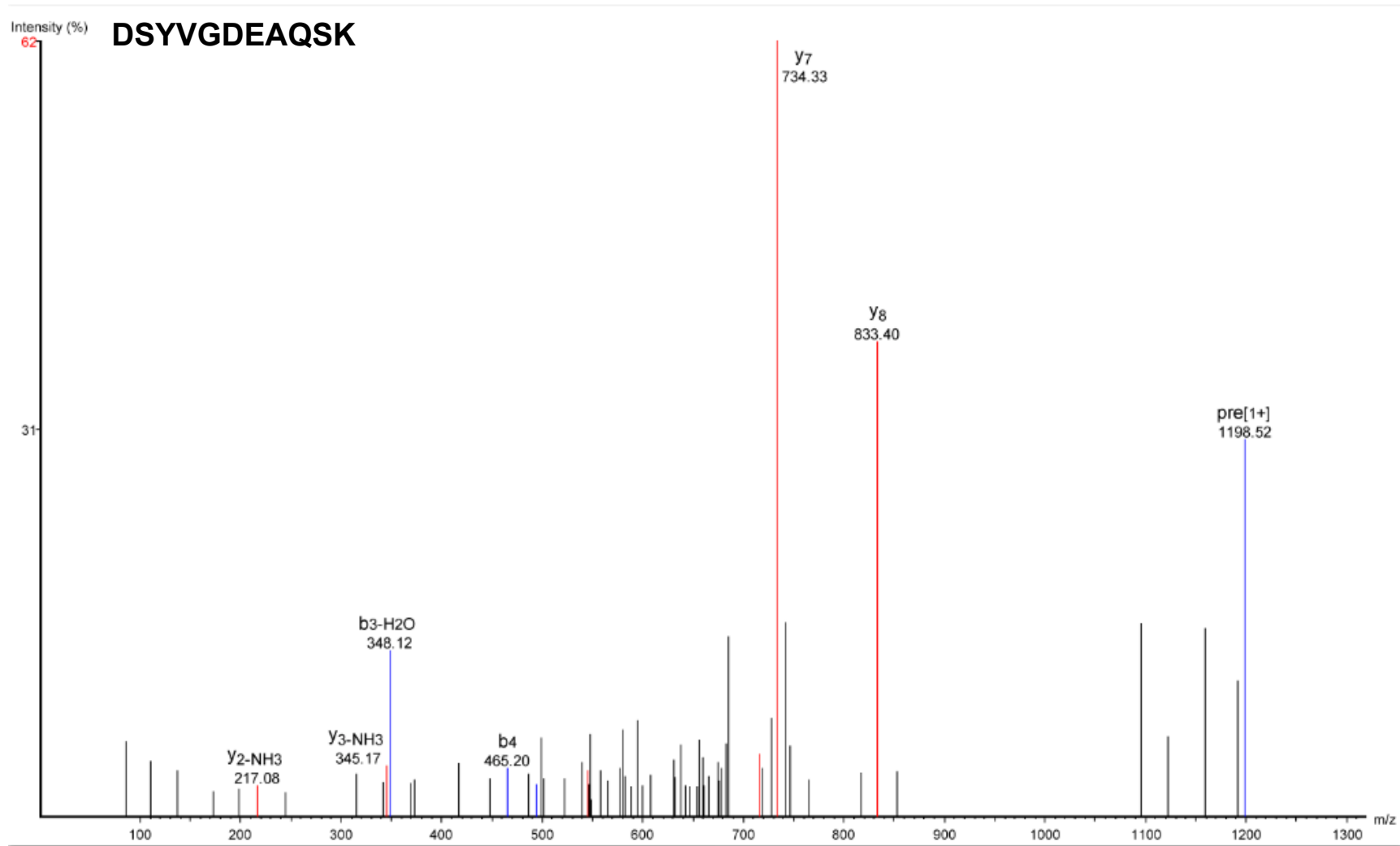
MS/MS spectrum of the peptide GYSFTTTAER identified from actin (P63261). Deisotoped peptide ion m/z: 1132.52⁺¹.



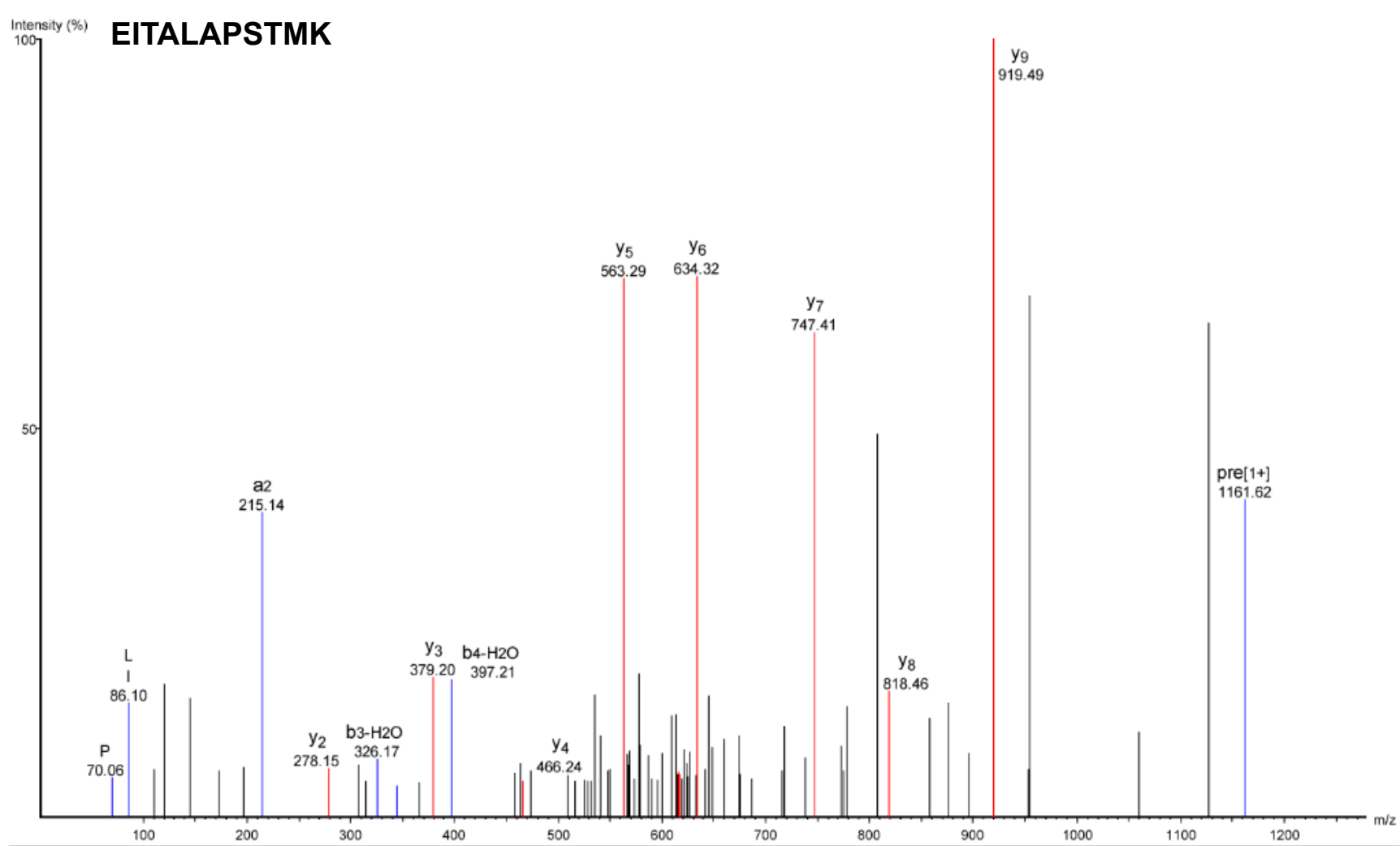
MS/MS spectrum of the peptide AGFAGDDAPR identified from actin (P63261). Deisotoped peptide ion m/z: 976.45⁺¹.



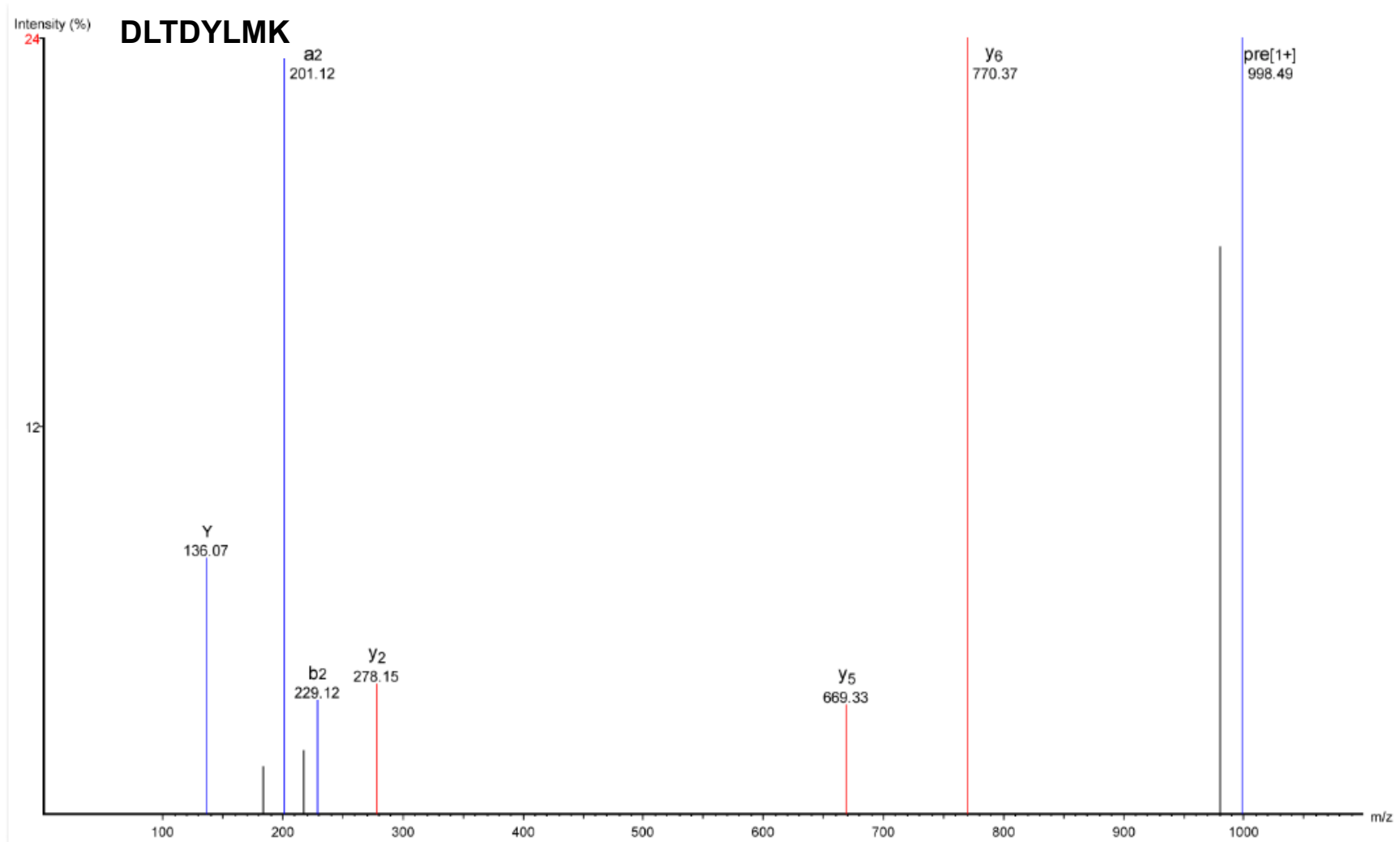
MS/MS spectrum of the peptide AVFPSIVGR identified from actin (P63261). Deisotoped peptide ion m/z: 945.55⁺¹.



MS/MS spectrum of the peptide DSYVGDEAQS K identified from actin (P63261). Deisotoped peptide ion m/z: 1198.52⁺¹.



MS/MS spectrum of the peptide EITALAPSTMK identified from actin (P63261). Deisotoped peptide ion m/z: 1161.62⁺¹.



MS/MS spectrum of the peptide DLTDYLMK identified from actin (P63261). Deisotoped peptide ion m/z: 998.49⁺¹.

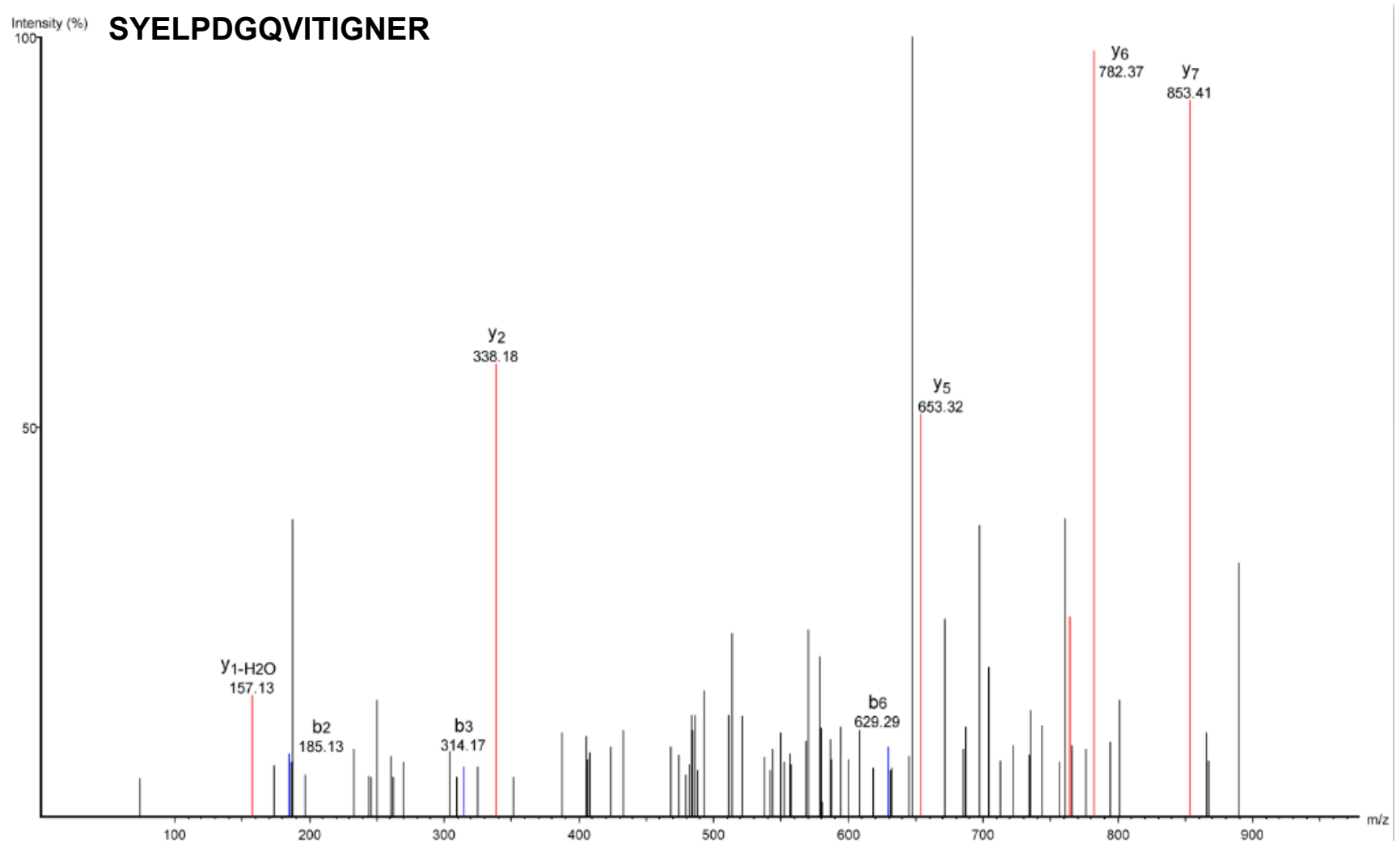
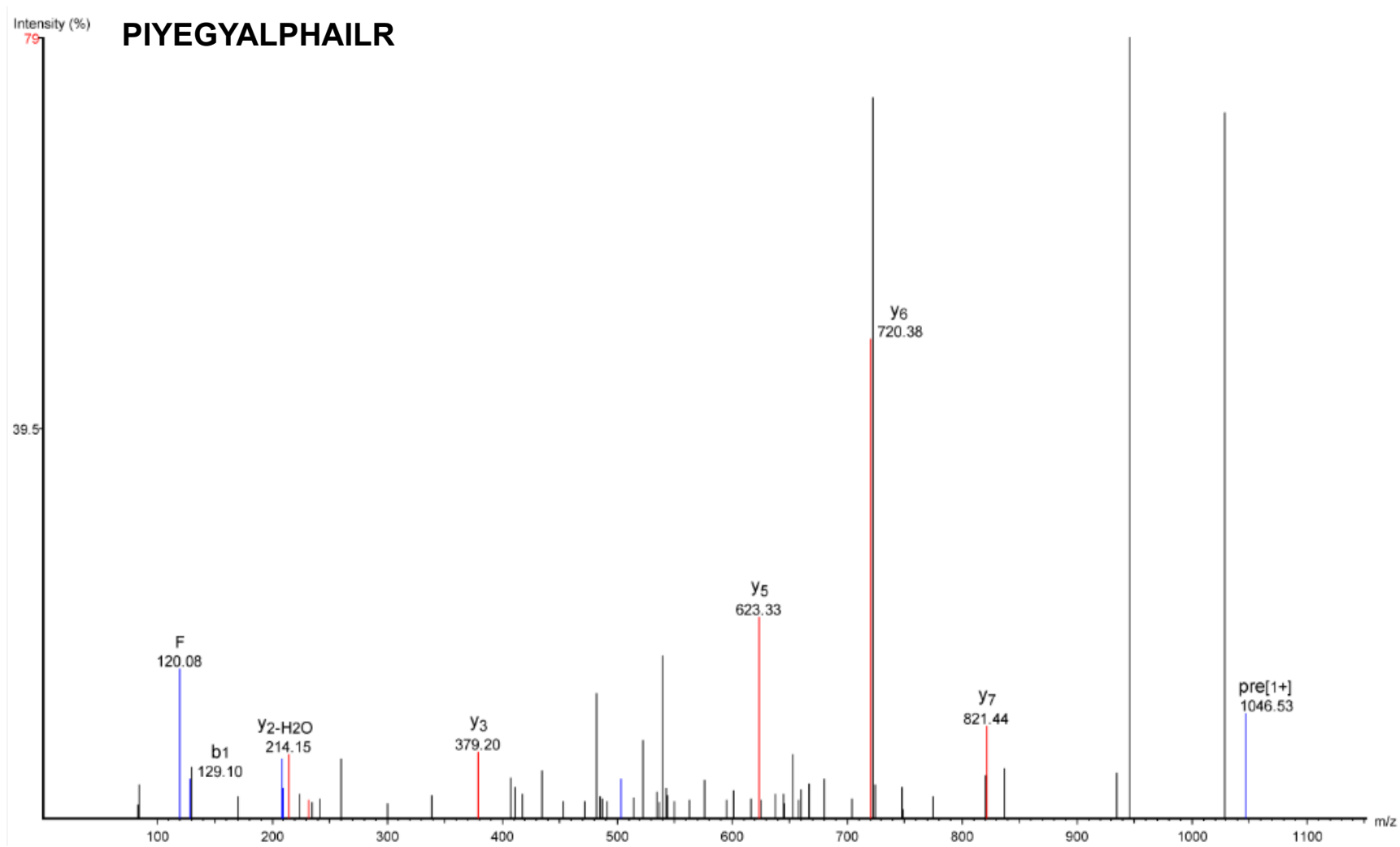
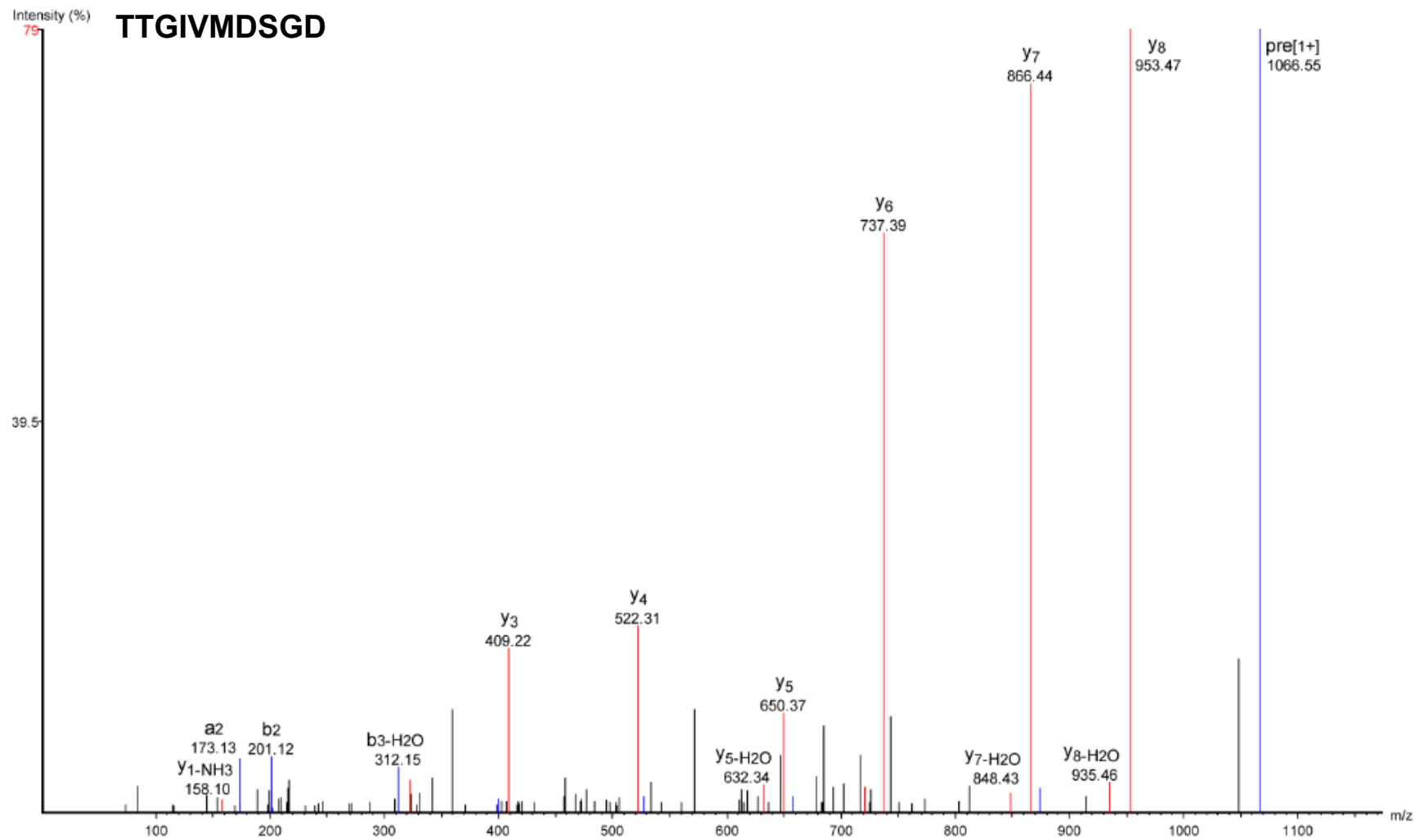


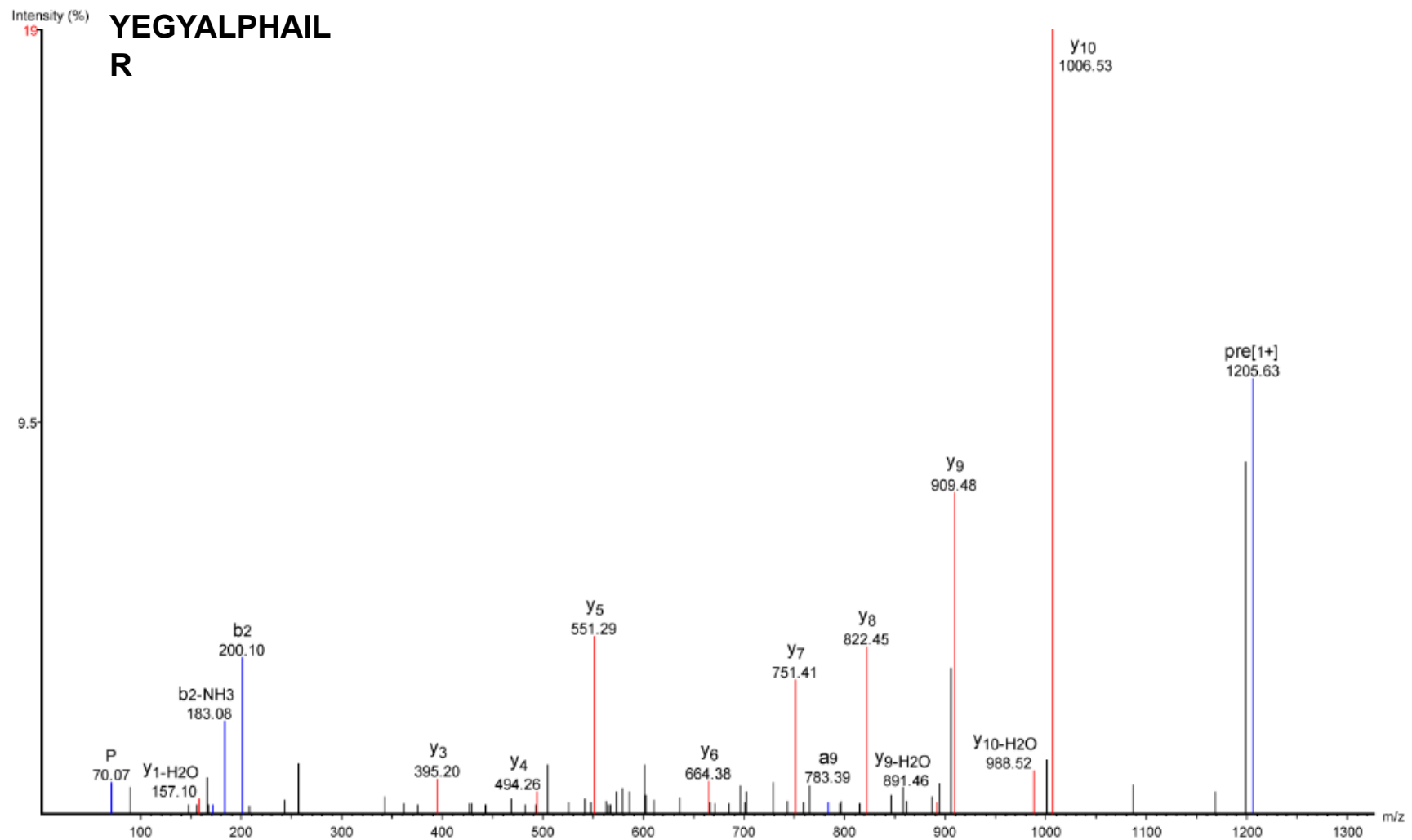
Figure. MS/MS spectrum of the peptide SYELPDGQVITIGNER identified from beta-actin-like protein (Q562R1). Deisotoped peptide ion m/z: 966.48⁺¹.



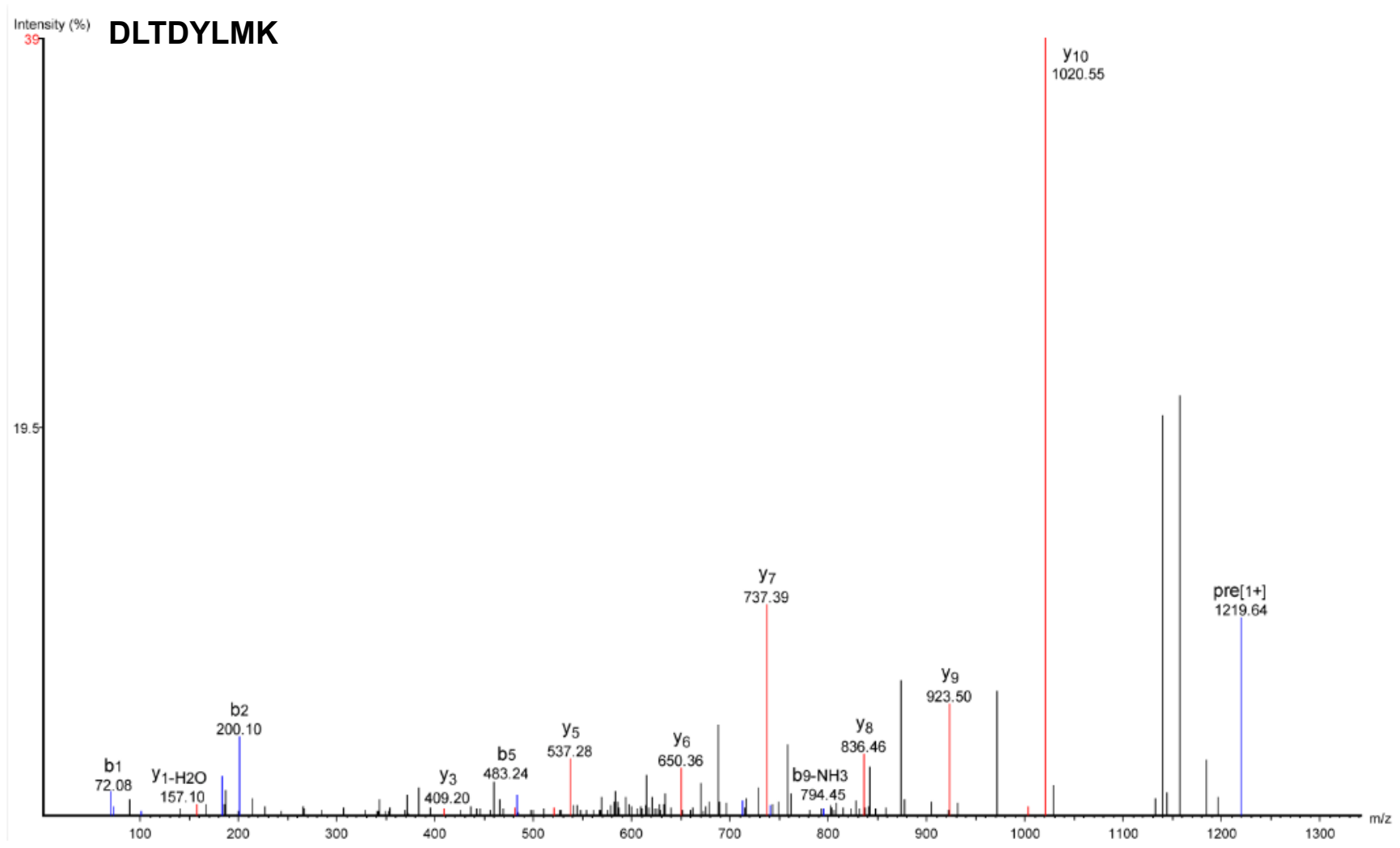
MS/MS spectrum of the peptide PIYEGYALPHAILR identified from beta-actin-like protein (Q562R1). Deisotoped peptide ion m/z: 1046.53⁺¹.



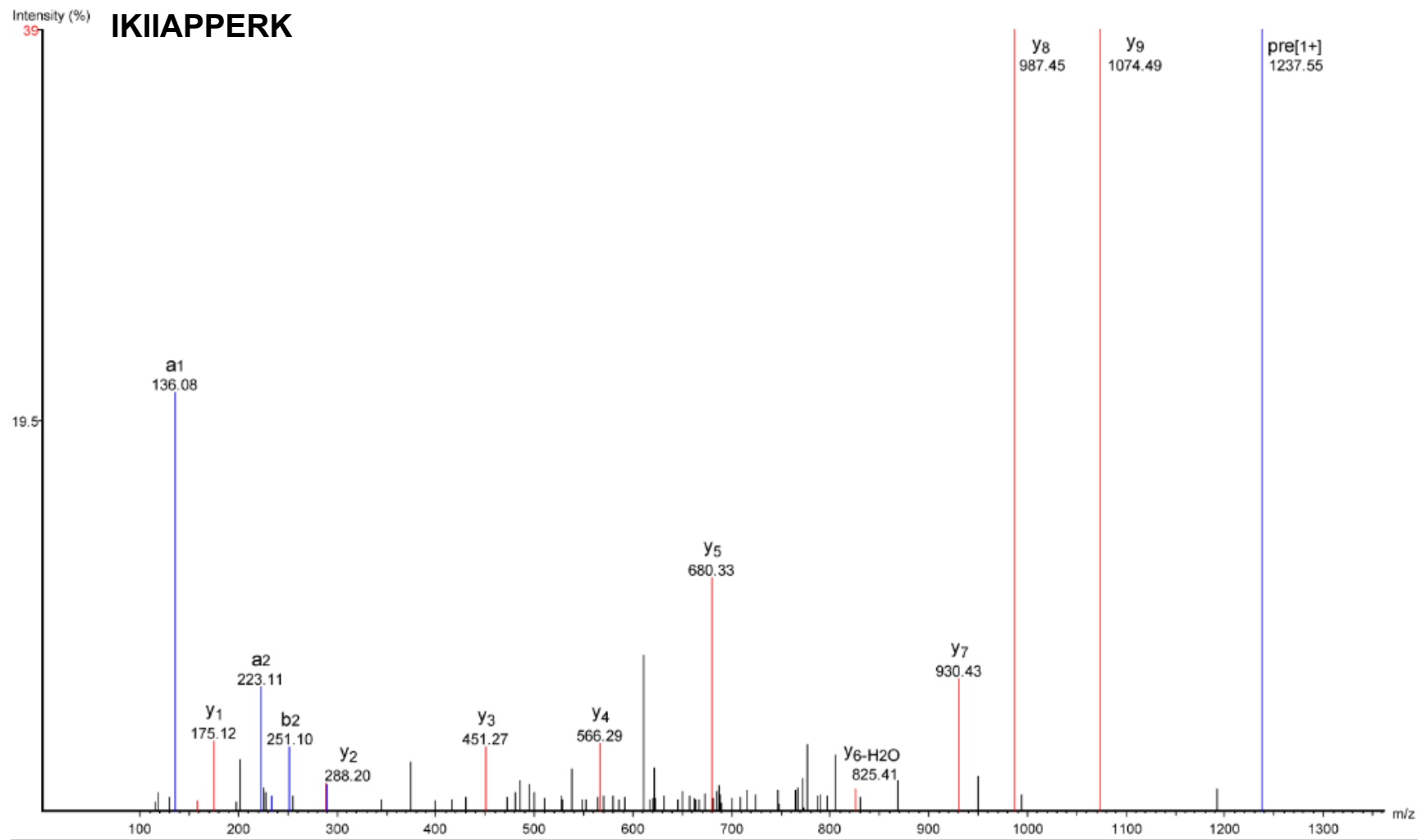
MS/MS spectrum of the peptide TTGIVMDSGD identified from beta-actin-like protein (Q562R1). Deisotoped peptide ion m/z: 1066.55⁺¹.



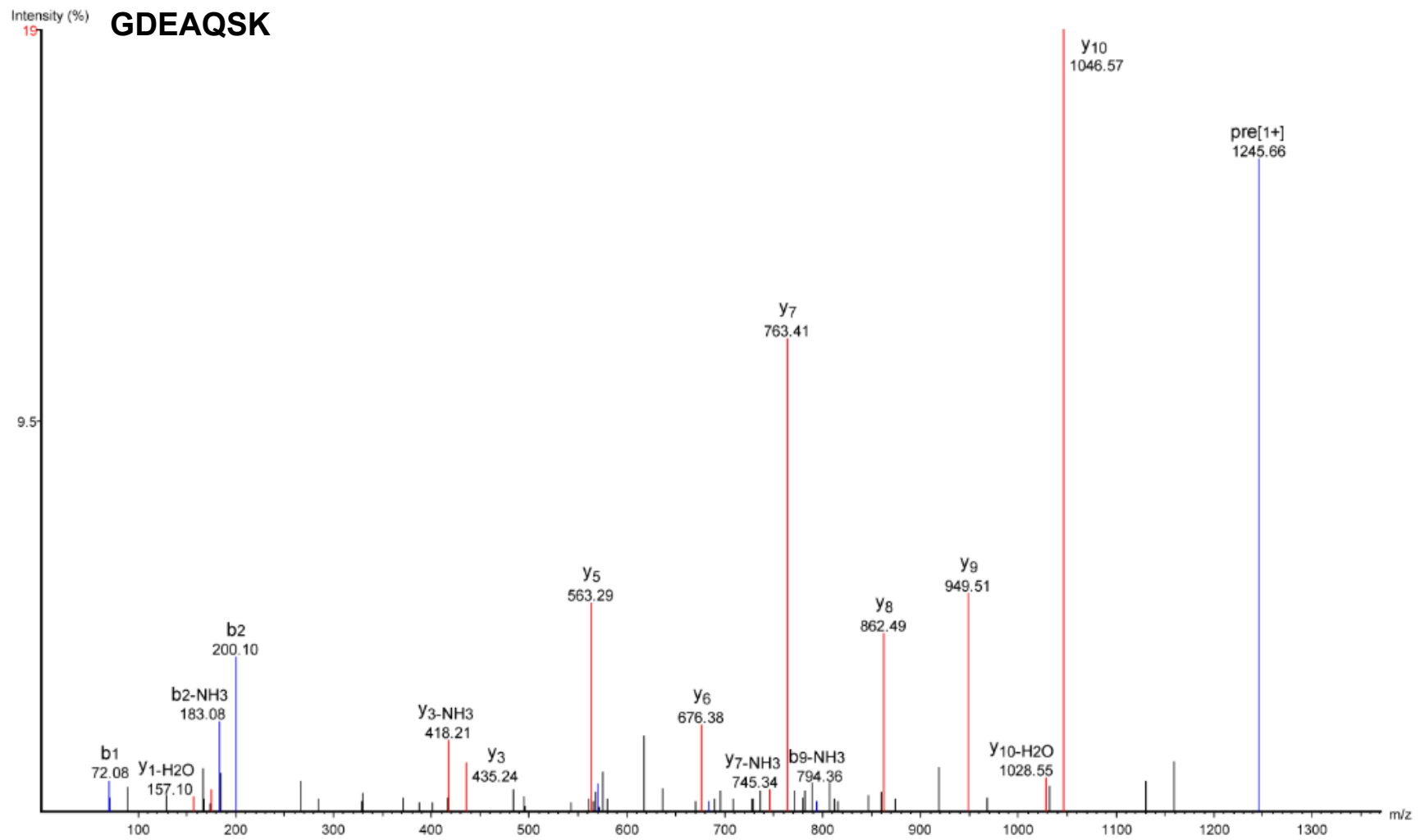
MS/MS spectrum of the peptide YEGYALPHAILR identified from beta-actin-like protein (Q562R1). Deisotoped peptide ion m/z: 1205.63⁺¹.



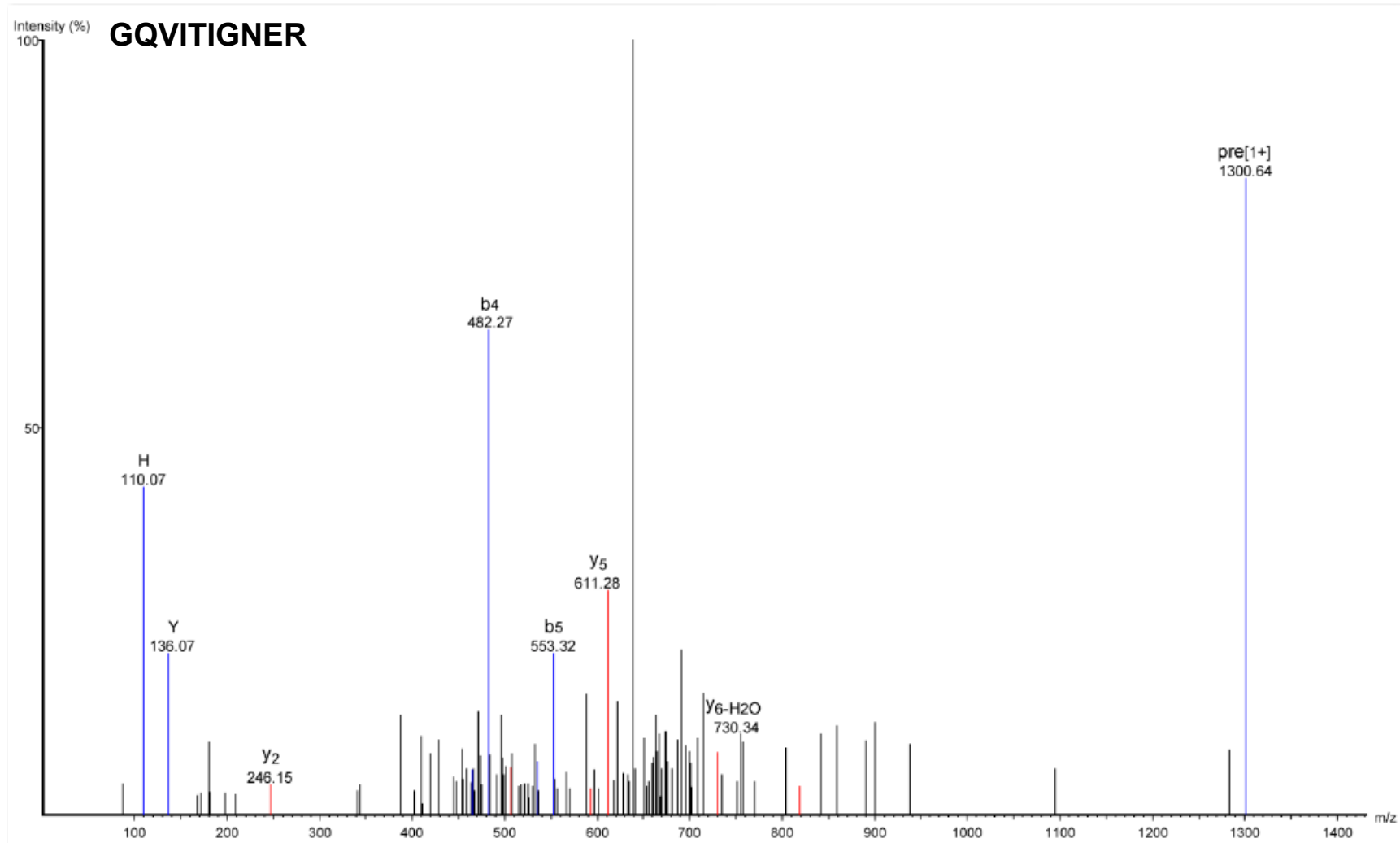
MS/MS spectrum of the peptide DLTDYLMK identified from beta-actin-like protein (Q562R1). Deisotoped peptide ion m/z: 1219.64⁺¹.



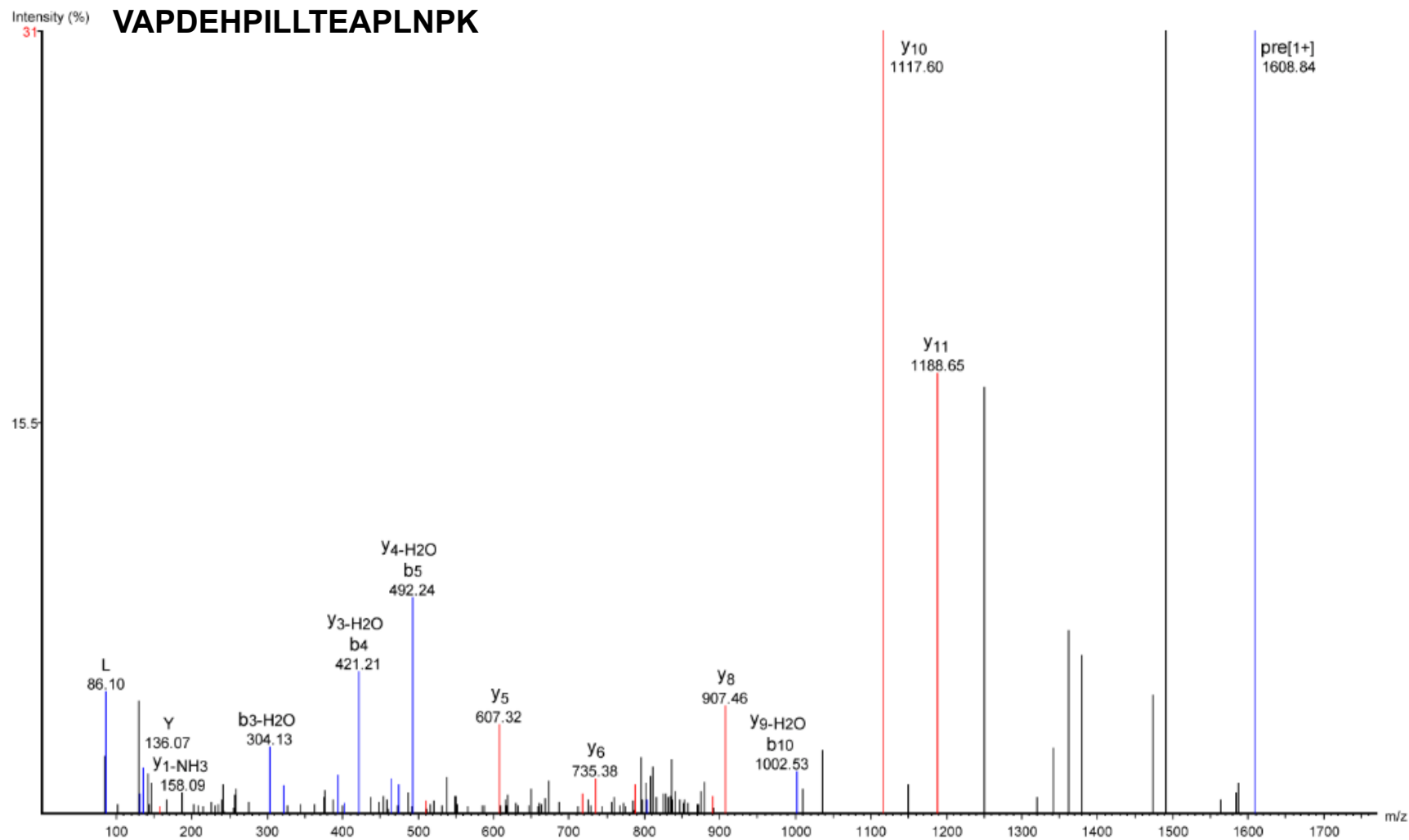
MS/MS spectrum of the peptide IKIAPPERK identified from beta-actin-like protein (Q562R1). Deisotoped peptide ion m/z: 1237.55⁺¹.



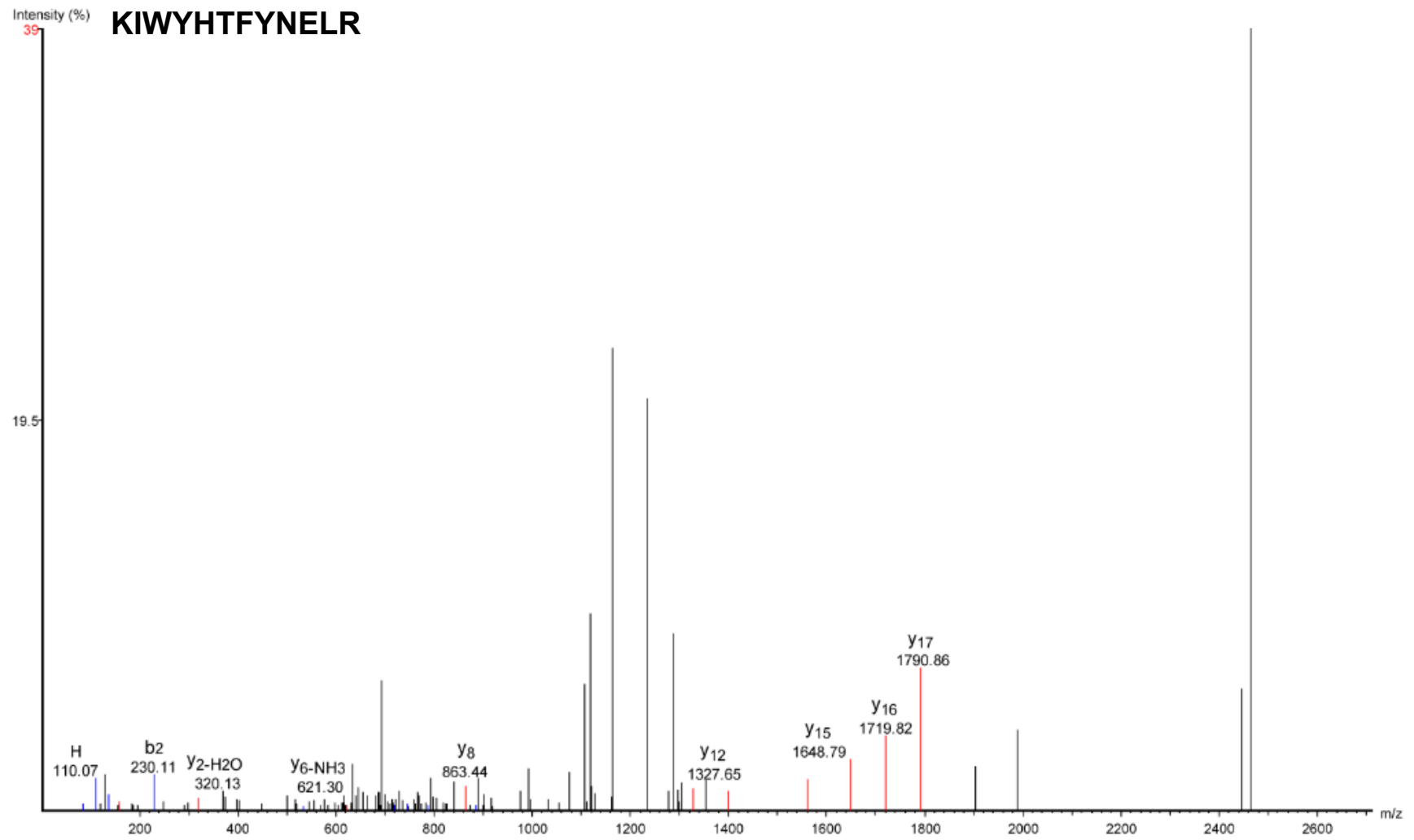
MS/MS spectrum of the peptide GDEAQS K identified from beta-actin-like protein (Q562R1). Deisotoped peptide ion m/z: 1245.66⁺¹.



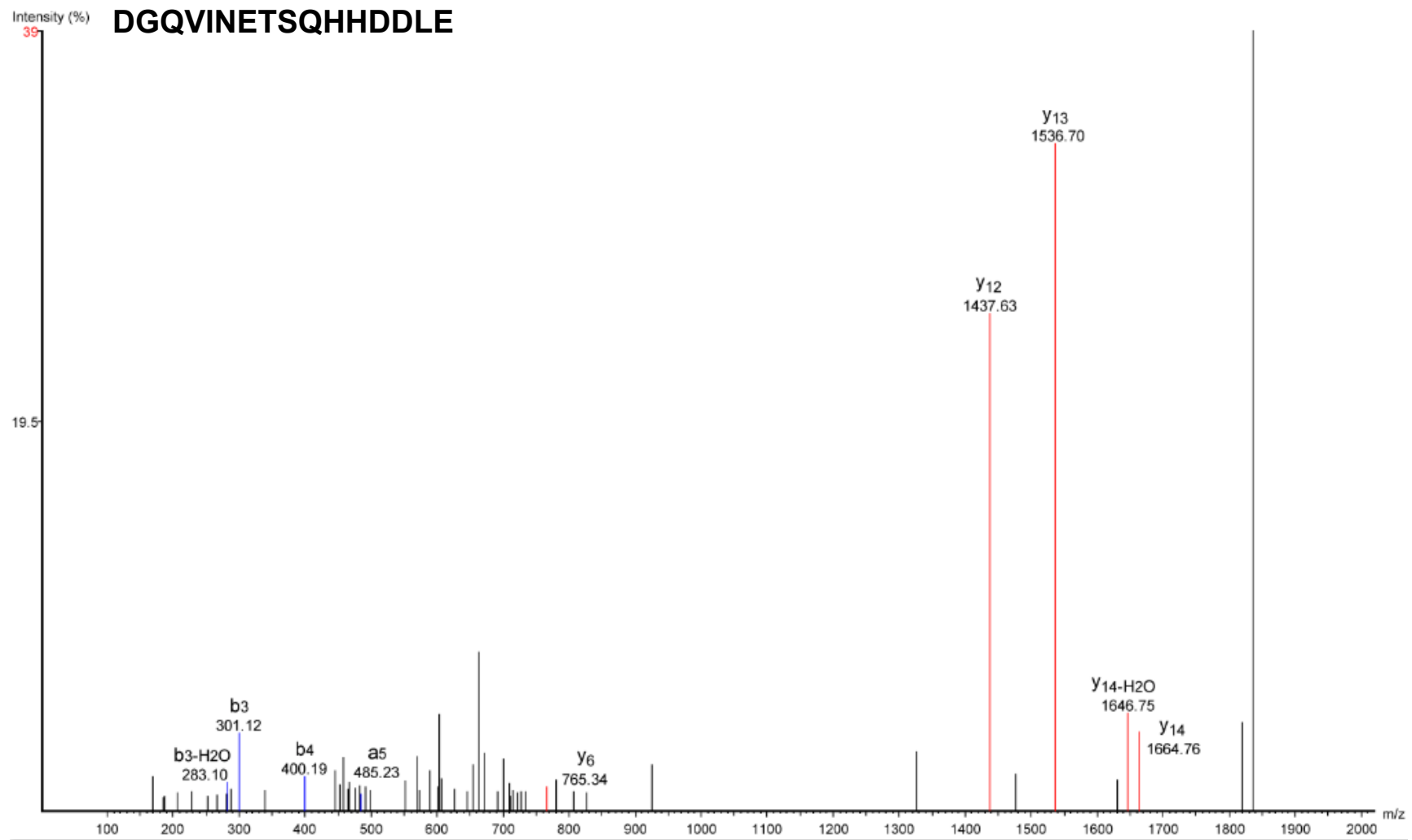
MS/MS spectrum of the peptide GQVITIGNER identified from beta-actin-like protein (Q562R1). Deisotoped peptide ion m/z: 1300.64⁺¹.



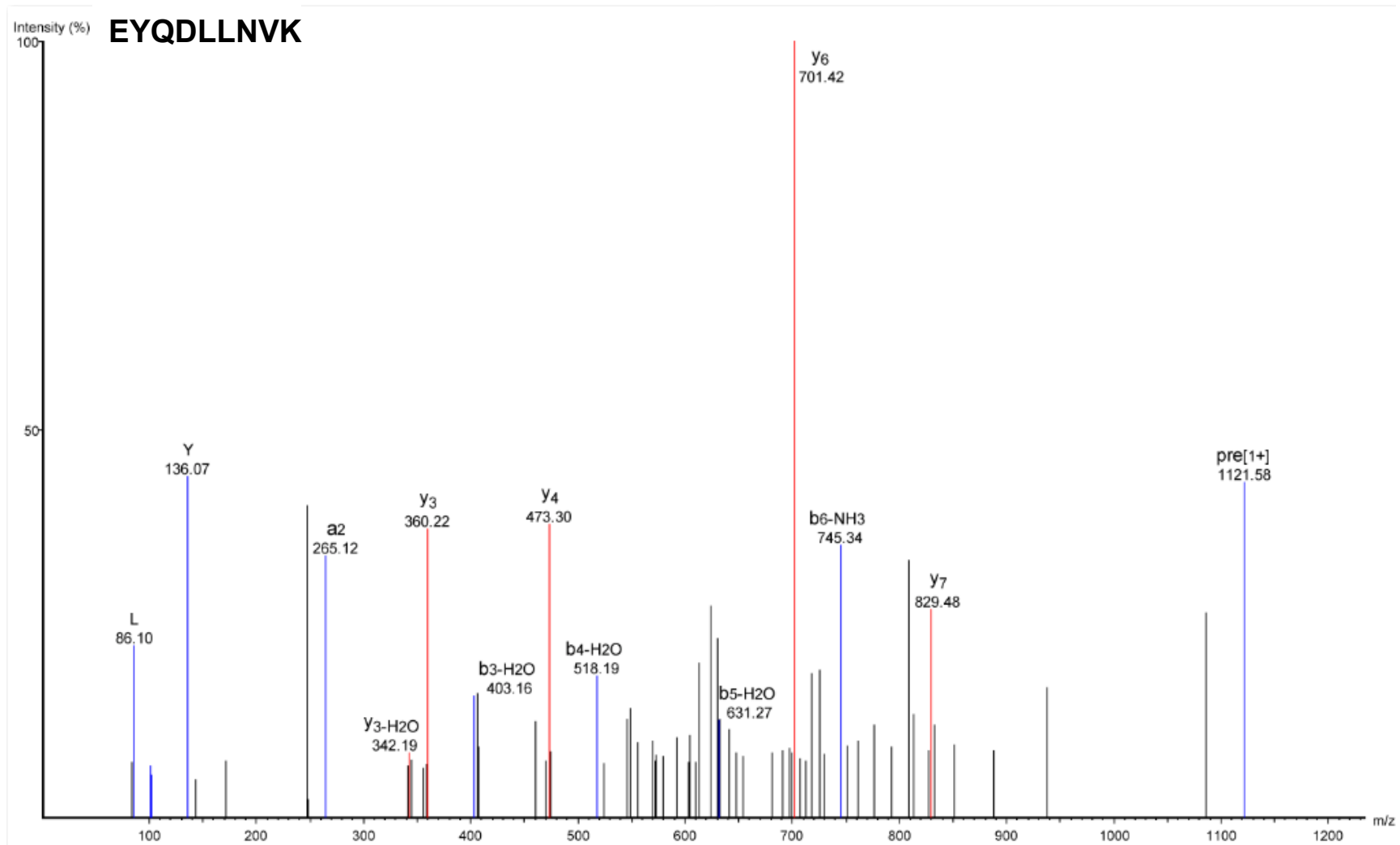
MS/MS spectrum of the peptide VAPDEHPILLTEAPLNPK identified from beta-actin-like protein (Q562R1). Deisotoped peptide ion m/z: 1608.84⁺¹.



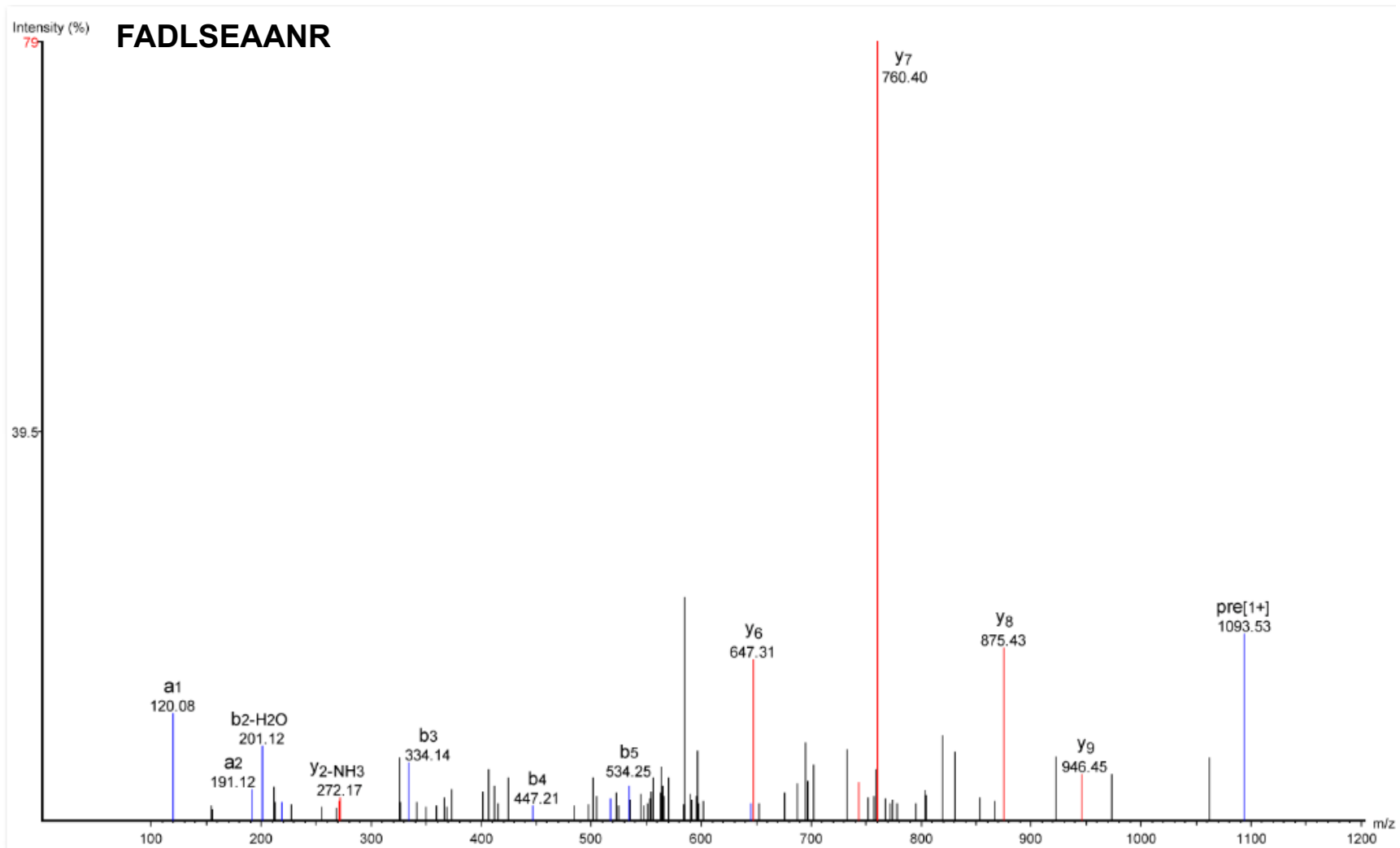
MS/MS spectrum of the peptide KIWYHTFYNELR identified from beta-actin-like protein (Q562R1). Deisotoped peptide ion m/z: 2465.18⁺¹.



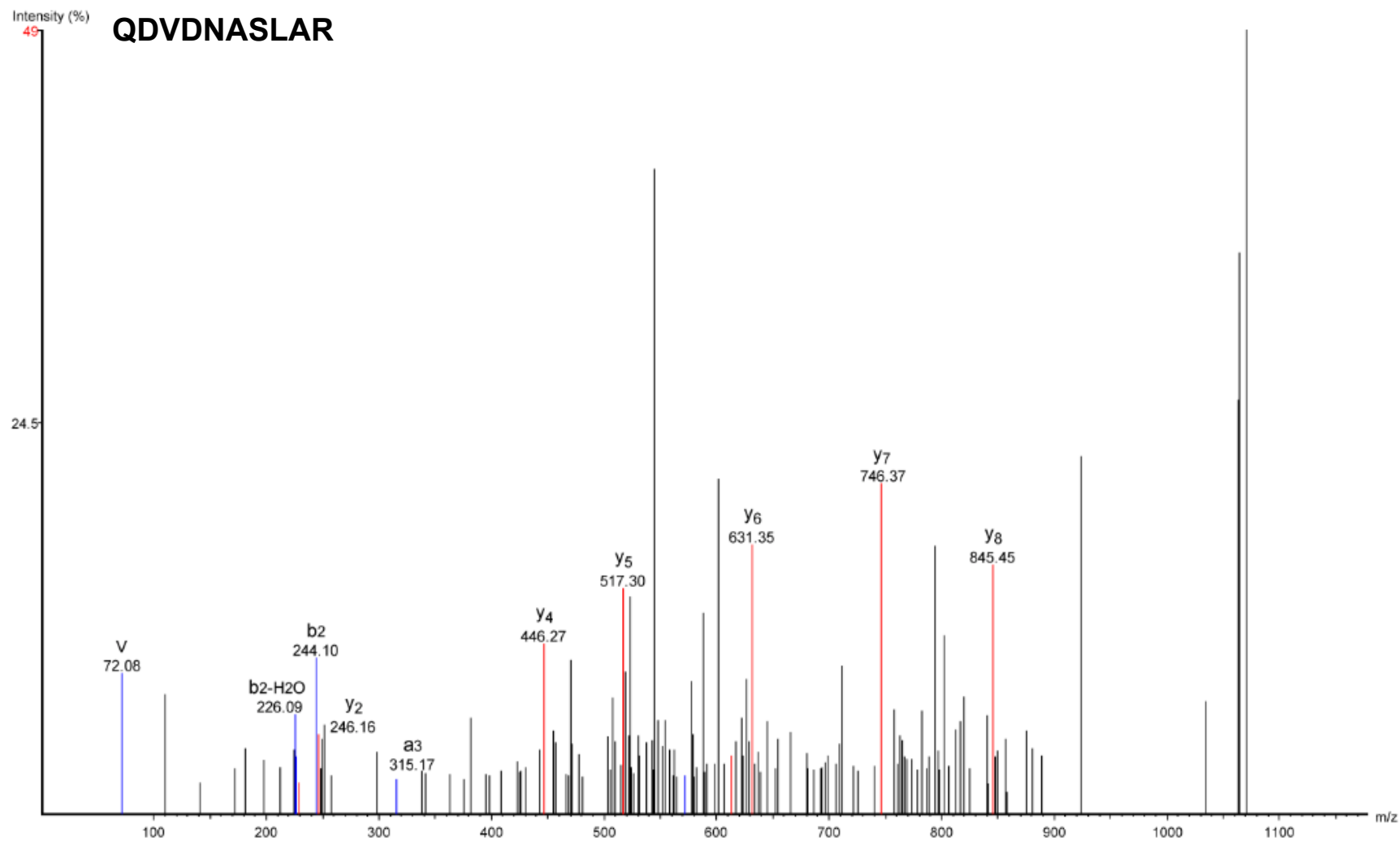
MS/MS spectrum of the peptide DGQVINETSQHHDDLE identified from human vimentin (P08670). Deisotoped peptide ion m/z: 1836.80⁺¹.



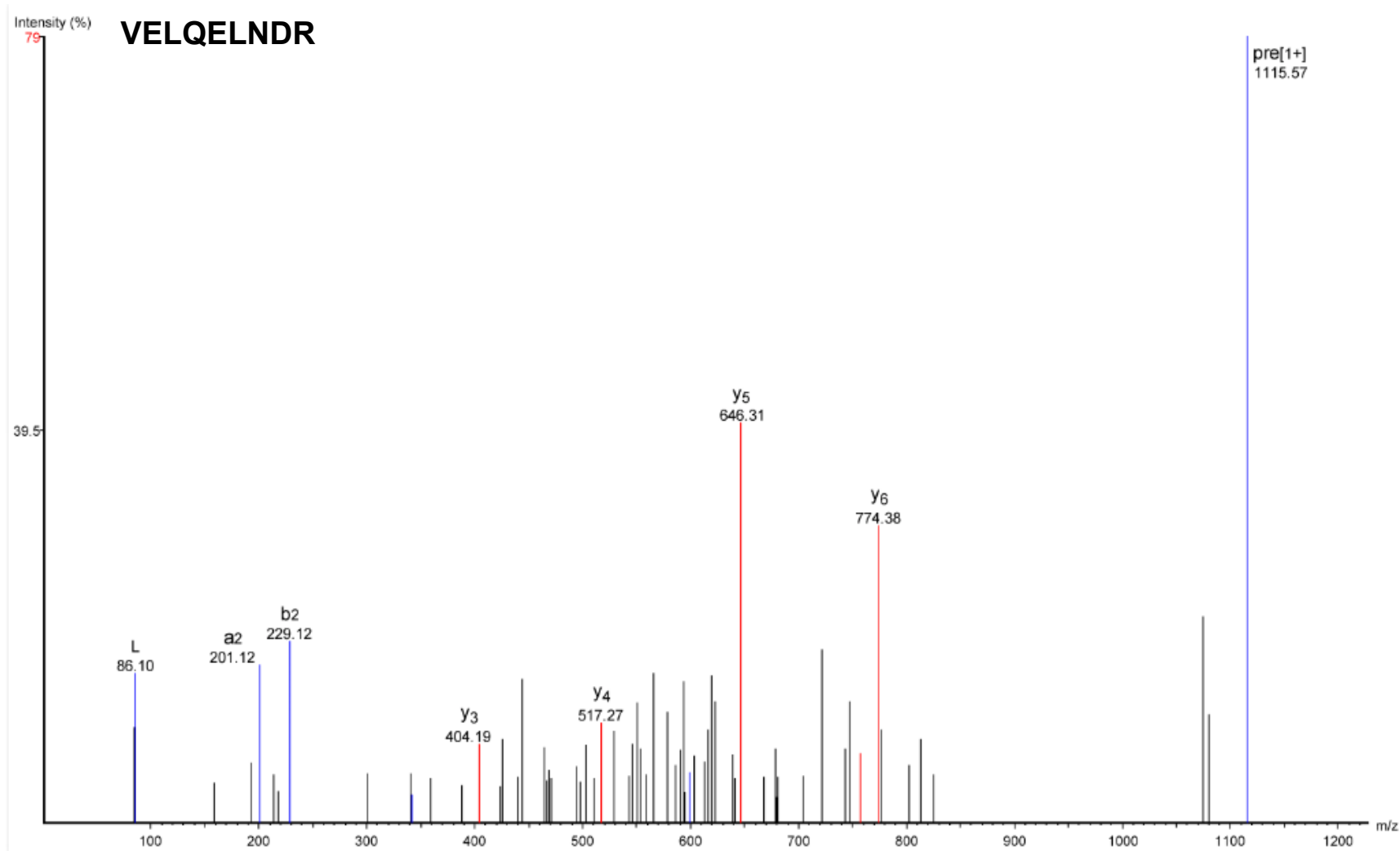
MS/MS spectrum of the peptide EYQDLLNVK identified from human vimentin (P08670). Deisotoped peptide ion m/z: 1121.58⁺¹.



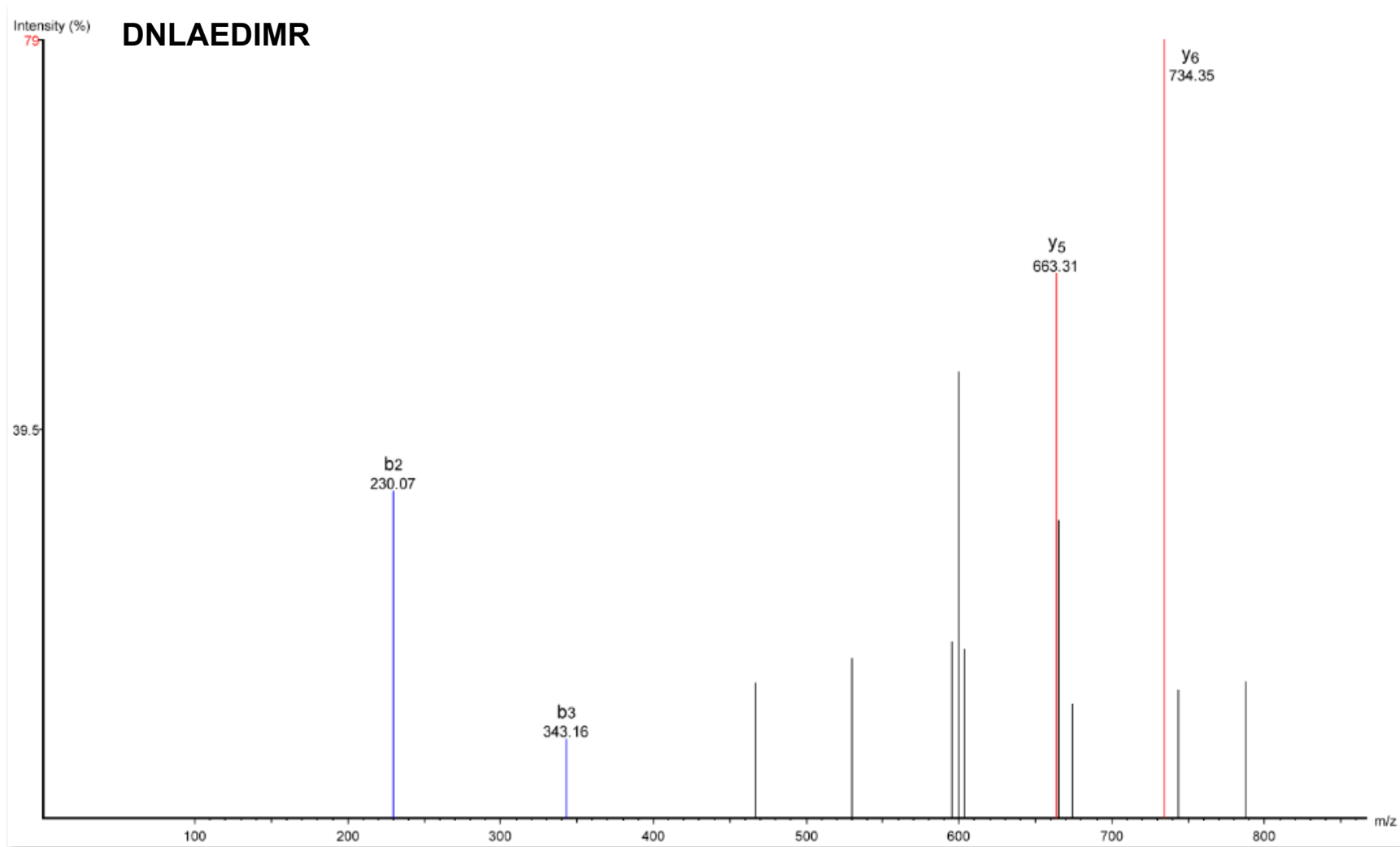
MS/MS spectrum of the peptide FADLSEAANR identified from human vimentin (P08670). Deisotoped peptide ion m/z: 1093.53⁺¹.



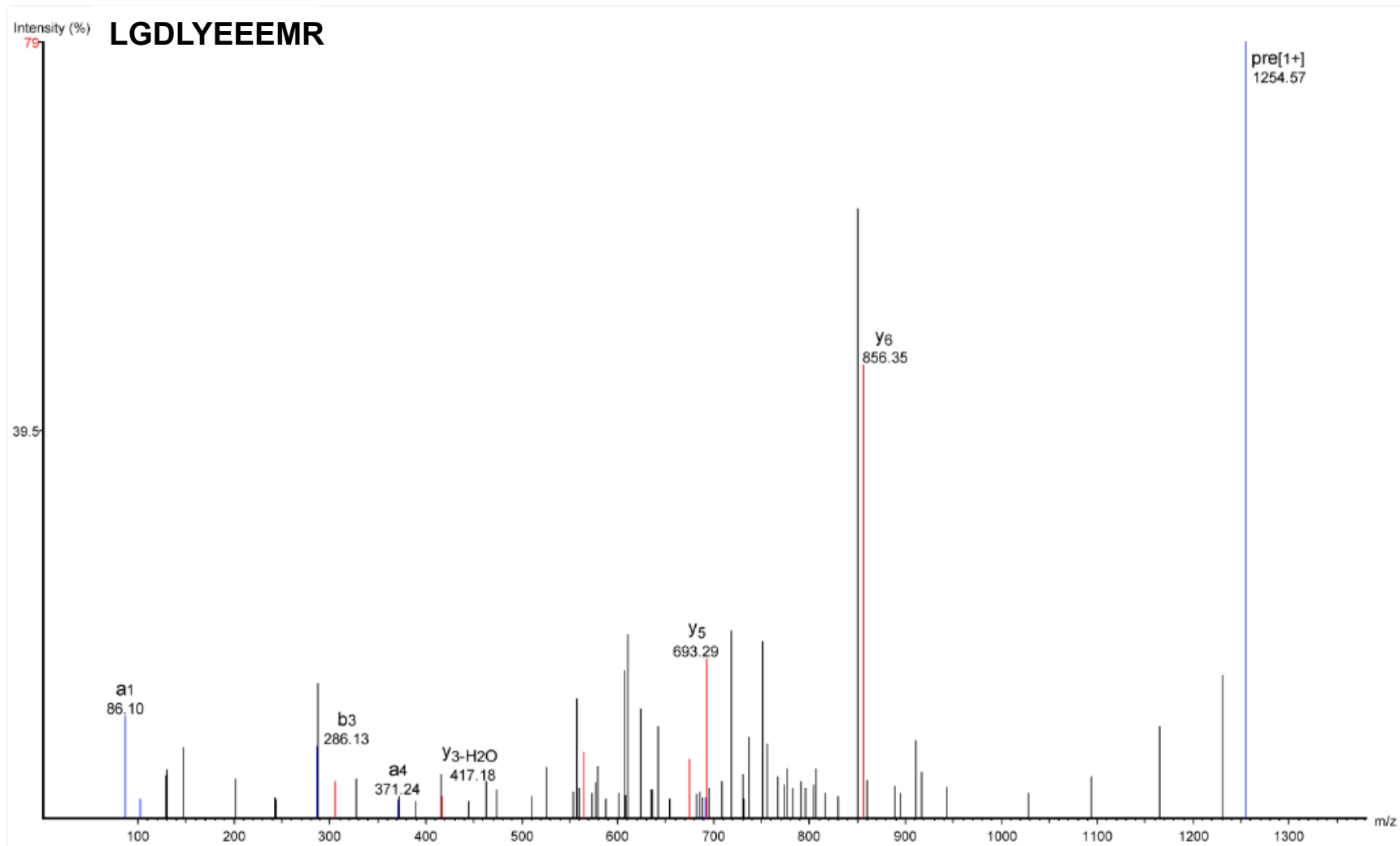
MS/MS spectrum of the peptide QDVDNASLAR identified from human vimentin (P08670). Deisotoped peptide ion m/z : 1088.53⁺¹.



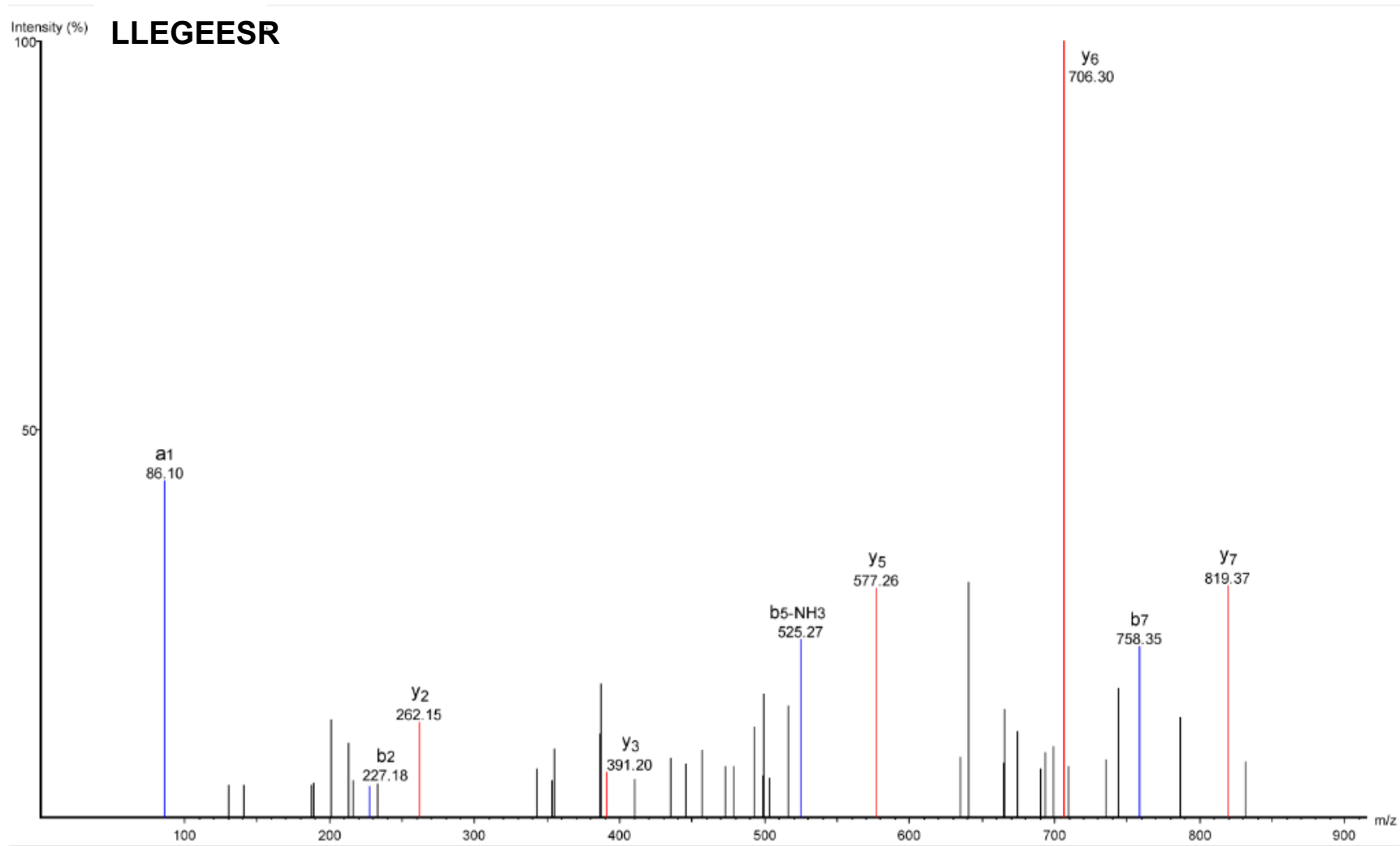
MS/MS spectrum of the peptide VELQELNDR identified from human vimentin (P08670). Deisotoped peptide ion m/z: 1115.57⁺¹.



MS/MS spectrum of the peptide DNLAEDIMR identified from human vimentin (P08670). Deisotoped peptide ion m/z: 1076.50⁺¹.



MS/MS spectrum of the peptide LGDLYEEEMR identified from human vimentin (P08670). Deisotoped peptide ion m/z: 1254.57⁺¹.



MS/MS spectrum of the peptide LLEGEESR identified from human vimentin (P08670). Deisotoped peptide ion m/z: 932.46⁺¹.