

Supplementary Materials: A New Patient-Derived Metastatic Glioblastoma Cell Line: Characterisation and Response to Sodium Selenite Anticancer Agent

Sylvie Berthier, Louis Larrouquère, Pierre Champelovier, Edwige Col, Christine Lefebvre, Cécile Cottet-Rouselle, Josiane Arnaud, Catherine Garrel, François Laporte, Jean Boutonnat, Patrice Faure and Florence Hazane-Puch

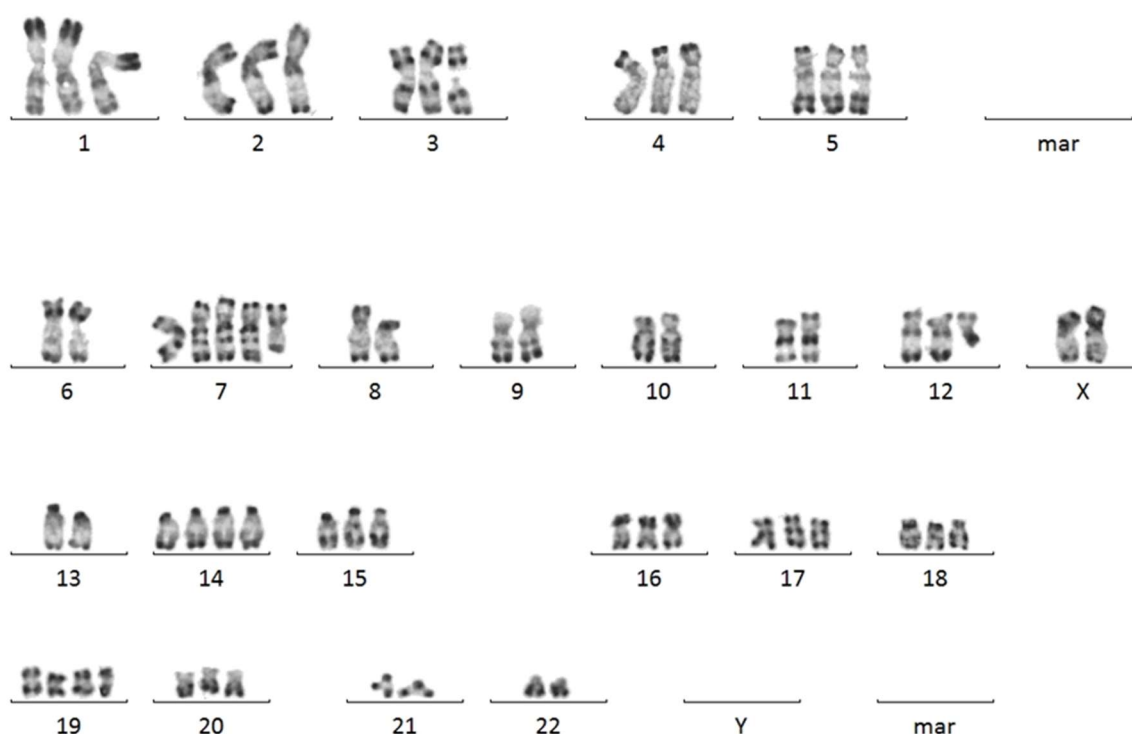


Figure S1. A representative G-banded karyotype of R2J cells. The R2J cell line was identified as near-triploid (hypotriploid) with 64 chromosomes.

Table S1. primer sequences used for RT-q-PCR.

Name	Forward (5'-3')	Reverse (5'-3')	Product Size (pb)
E-Cadherin	ATTTTCCCTCGACACCCGAT	TCCCAGGCGTAGACCAAGA	109
HPRT1	CTCATGGACTAATTATGGACAGGAC	GCAGGTCAGCAAAGAATTTATAGCC	123
MGMT	ACCGTTTGGCGACTTGGTACTT	GGAGCTTATTTCGTGCAGACC	127
N-Cadherin	TCAGGCTGTGGACATAGAAACC-	GCTGTAAACGACTCTGGCACT	217
RPL27	TGATGGCACCTCAGATCGC	AGAGTACCTTGTGGGCATTAGG	240
RPL32	TTAAGCGTAACTGGCGGAAAC	GAGCGATCTCGGCACAGTAA	210
SOX2	TGGACAGTTACGCGCACAT	CGAGTAGGACATGCTGTAGGT	215