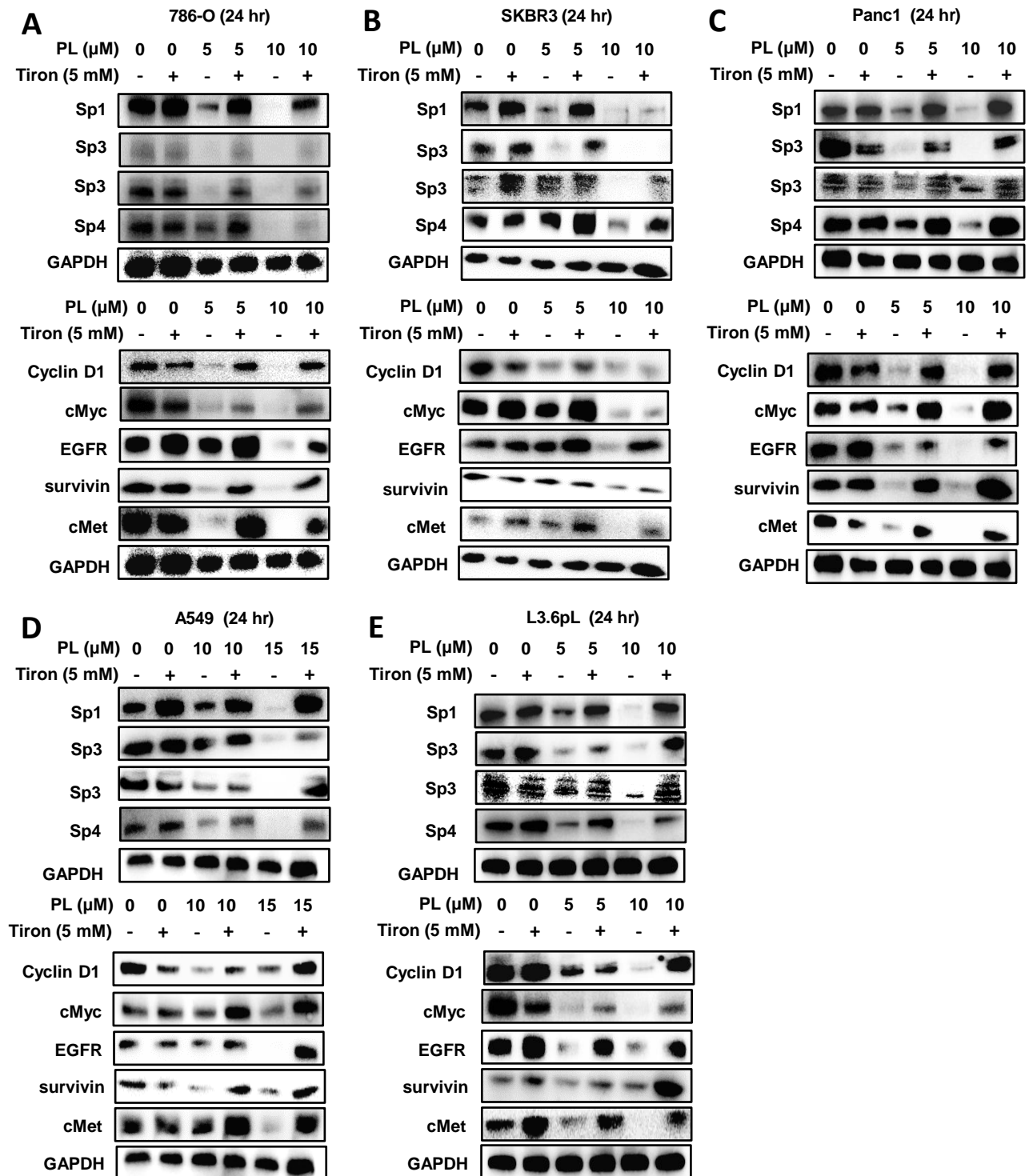


Supplemental Figure S2



Supplemental Figure S2. Piperlongumine downregulates Sp1, Sp3, Sp4 and Sp-regulated genes: effects of Tiron. 786-O (A), SKBR3 (B), Panc1 (C), A549 (D), and L3.6pL (E) cells were treated with 5 mM GSH or different concentrations of piperlongumine alone and in combination for 24 hr, and whole cell lysates were analyzed by western blots. Effects on Sp proteins and Sp-regulated genes and PARP cleavage (Fig. 3) were all obtained in the same experiment and have the same GAPDH loading control. Similar results were observed in duplicate experiments.