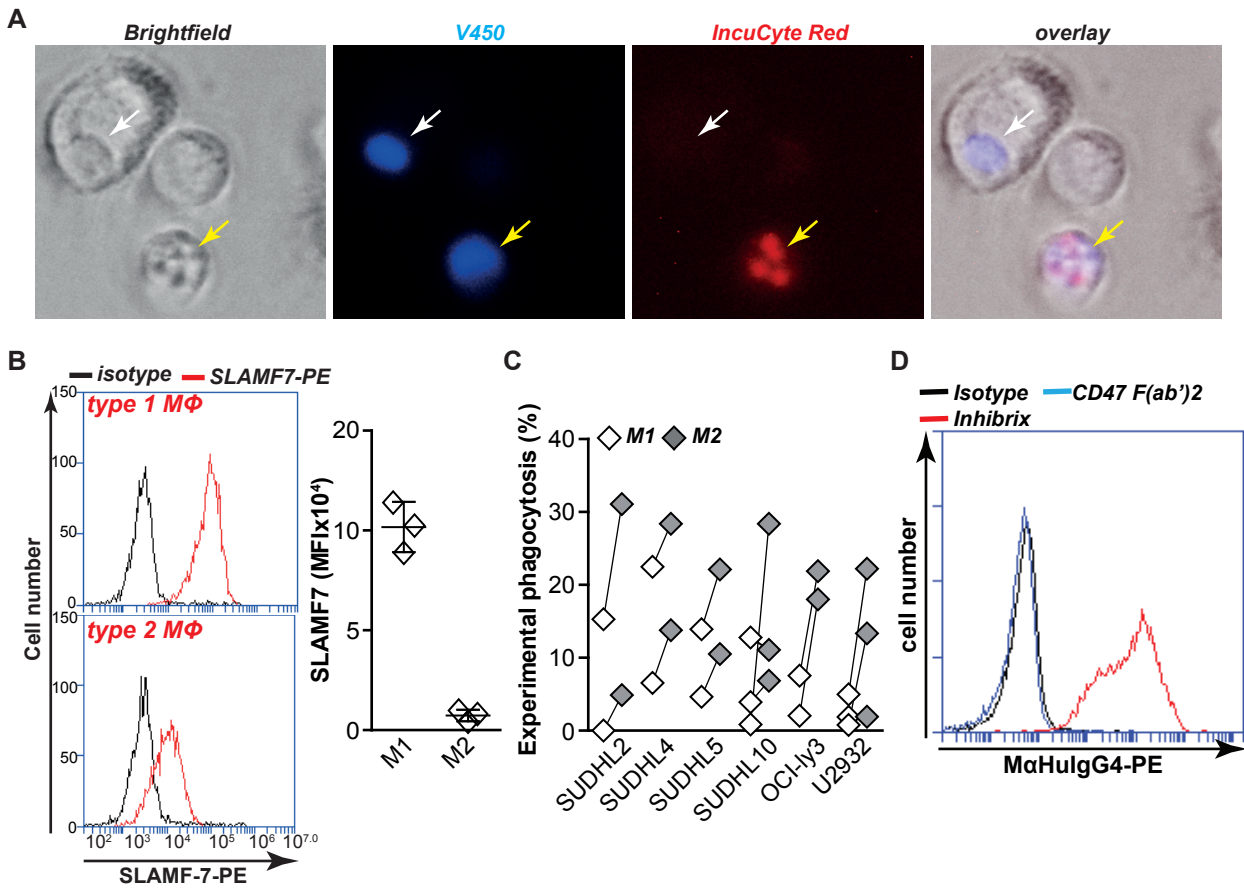


Supplementary Information File

Cancer cell expressed SLAMF7 is not required for CD47-mediated phagocytosis

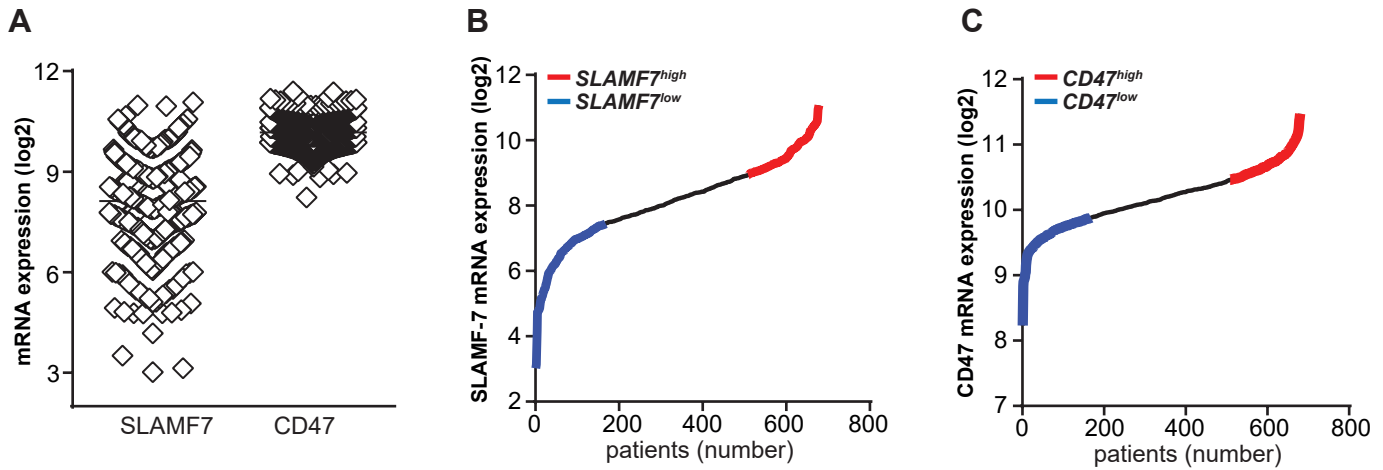
He et al.

Supplementary Figure 1



Supplementary Figure 1. A. V450 and IncuCyte caspase-Red labelled cancer cells were incubated with macrophages for 2h, after which phagocytosis was assessed by fluorescent microscopy. **White arrows:** V450 and IncuCyte caspase-Red negative cancer cells inside a macrophage. **Yellow arrows:** V450 and IncuCyte caspase-Red positive apoptotic cancer cell that is not phagocytosed. **B.** SLAMF-7 expression level on both type 1 and type 2 macrophage derived from matched donors. **C.** Comparison of phagocytosis by CD47 F(ab')₂ in 6 DLBCL lines between type 1 macrophage and type 2 macrophage (n=2). **D.** Validation of removal of the Fc domain from the CD47 F(ab')₂ preparation. Presence of human IgG4 was assessed using PE-conjugated hulG4 antibody after incubation of inhibrix en CD47 F(ab')₂ on CD47-expressing Jurkat cells, with no residual IgG4 staining after incubation with CD47 F(ab')₂.

Supplementary Fig.2

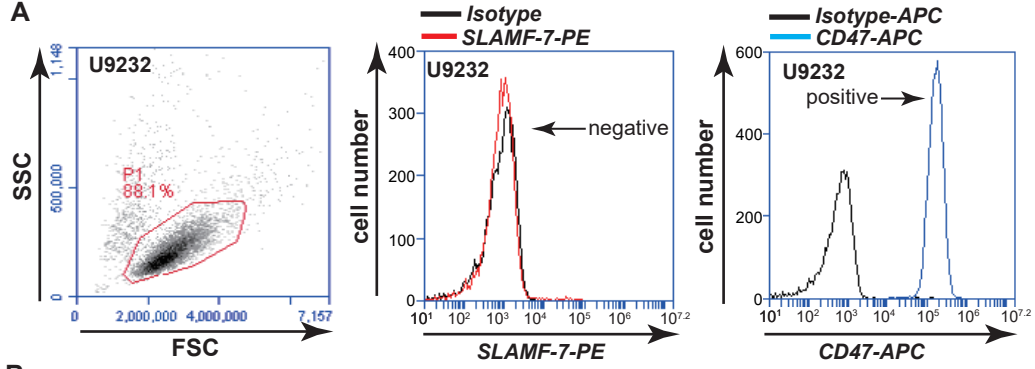


Supplemental Figure 2

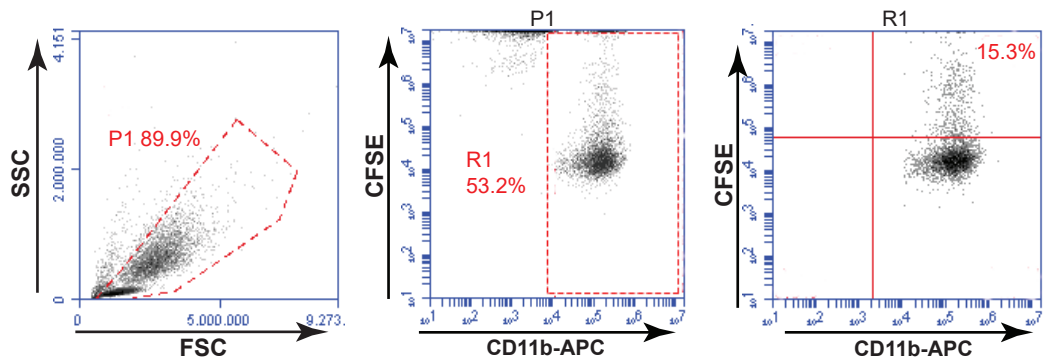
A. SLAMF7 and CD47 gene expression profiles (log2) of 677 rituximab-cyclophosphamide-vincristin-doxorubicin-prednisone treated Diffuse Large B-cell lymphoma patients obtained from the public domain. **B.** Distribution of SLAMF7 expression, in blue SLAMF7 low expressing patients and in red SLAMF7 high expressing patients. **C.** Distribution of CD47 expression, in blue CD47 low expressing patients and in red CD47 high expressing patients.

Supplementary Fig. 3

A



B



Supplementary Figure 3. A. Representative gating strategy for cell surface staining of SLAMF-7 (or CD47), as exemplified using staining of U9232. B. Representative gating strategy for flow cytometric phagocytosis assay, using CFSE-labeled tumors and CD11b-labeled macrophages.

Supplementary Tables

Supplemental Table 1. Patient characteristics

Variables	R-CHOP treated DLBCL patients (n=680)
Median age, years (range)	63 (17-92)
Gender	
Male, n(%)	357 (58,2)
Female, n(%)	256 (37,6)
Unknown, n(%)	67 (9,9)
COO	
germinal center b cell (GCB), n(%)	305 (44,9)
Non-GCB, n(%)	375 (55,1)
IPI categorized	
Low risk (0,1)	235 (34,6)
Intermediate (2,3)	259 (38,1)
High risk (4,5)	71 (10,4)
Unknown, n(%)	115 (16,9)
Ann Arbor	
Non advanced stage of disease (1,2)	228 (33,5)
Advanced stage of disease (3,4)	255 (37,5)
Unknown, n(%)	197 (29,0)
Median SLAMF7 expression, (range)	8,20 (3,02-11,07)
Median CD47 expression, (range)	10,17 (8,23-11,47)

Supplemental Table 2. GEO accession numbers

GSE_serie identifier	number of patients	Platform	PMID					
GSE31312	409	GPL570	26324762	26248897	26111978	22437443	23982177	23775435
GSE4475	13	GPL96	16760442	23143595				
GSE10846	233	GPL570	19038878	21546504				
GSE23501	25	GPL570	20610814					