

Zinc-finger

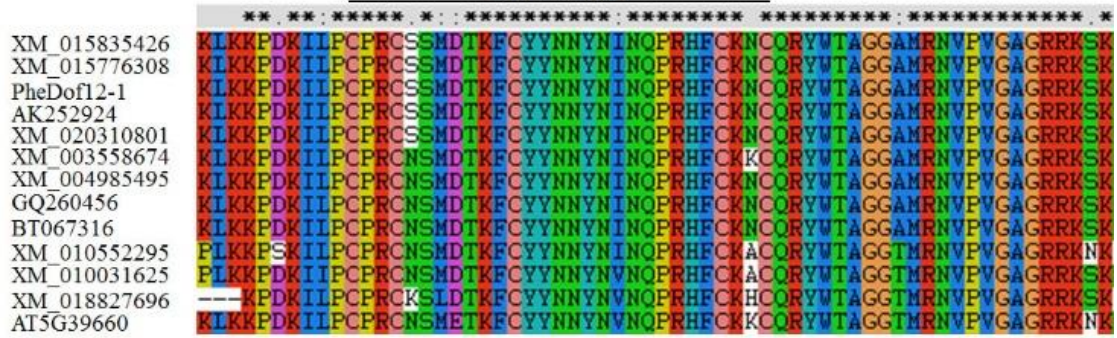


Figure. S1. Multiple alignment of deduced amino acid sequences of Dof proteins among different plants. The putative signal peptide and conservative C2C2-type zinc-finger motif at N-terminal end are labeled. The highly conserve C residues in N-terminal are shaded in pink.

Table 1. primers were used for gene cloning and qRT-PCR.

Gene	Primer sequence (5'→3')
2300-PheDof12-1	Forward GGAAATTCATGGGGGCGTGCAGGGCAG
	Reverse GGGTACCTCAAGATCCCTCTTGAAGGTCAGT
GFP-PheDof12-1	Forward GGGTACCATGGGGGCGTGCAGGGCAG
	Reverse GCGTCGACAGATCCCTCTTGAAGGTCAGT
AD-PheDof12-1	Forward GCAGAGTGGCCATTATGGCCATGGGGGCGTGCAGGGCAG
	Reverse GCGGCCGACATGTTTTTCCCTCAAGATCCCTCTTGAAGGTCAGT
qRT-PheDof12-1	Forward AGGGCAGCGCAGGAGGA
	Reverse TTTCTGTACTTTTGGTTCCGTCGT
pHIIS-PheCOL4	Forward CGAATTCGCGGGAGCTCAACTGCTTCCGATTAATGTCTAC
	Reverse CGCGGATCGATTGCGGAAGTCTAGACTTCTAATGCAAGCGTTT
qRT-PheCOL4	Forward ACTCCATGAACACAGCGTA
	Reverse GAATGGTCTTCTCGAACCGC
TIP41	Forward AAAATCATTGTAGGCCATTGTCG
	Reverse ACTAAATTAAGCCAGCGGGAGTG
NTB	Forward TCTGTTTGACACCGAAGAGGAG
	Reverse AATAGCTGTCCCTGGAGGAGTTT
Actin	Forwards GTATGTGGCTATTCAGGCTGT
	Reverse CTGGCGGTGCTTCTTCTCTG
FT	Forward CTTGGCAGGCAAACAGTGTATGCAC
	Reverse GCCACTCTCCCTCTGACAATTGTAGA
SOC1	Forward AGCTGCAGAAAACGAGAAGCTCTCTG
	Reverse GGGCTACTCTTTCATCACCTCTCC
AGL24	Forward GAGGCTTTGGAGACAGAGTCGGTGA
	Reverse AGATGGAAGCCCAAGCTCAGGGAA
FLC	Forward AGCCAAGAAGACCGAACTCA
	Reverse TTTGTCCAGCAGGTGACATC
SVP	Forward CAAGGACTTGACATTGAAGAGCTTCA
	Reverse CTGATCTCACTATAATCTTGTAC