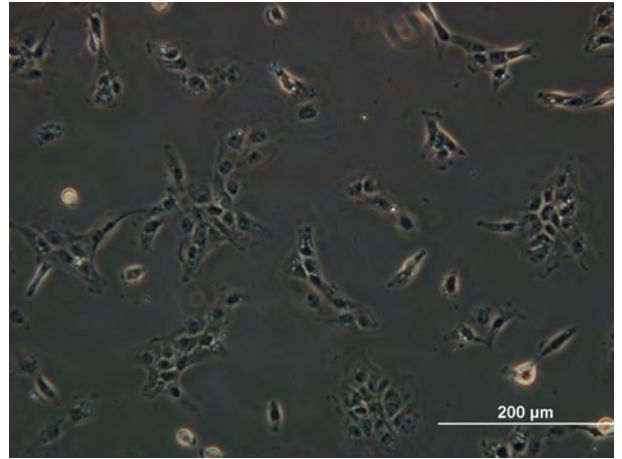


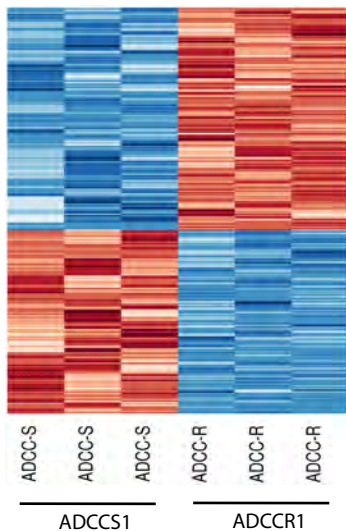
ADCCS1



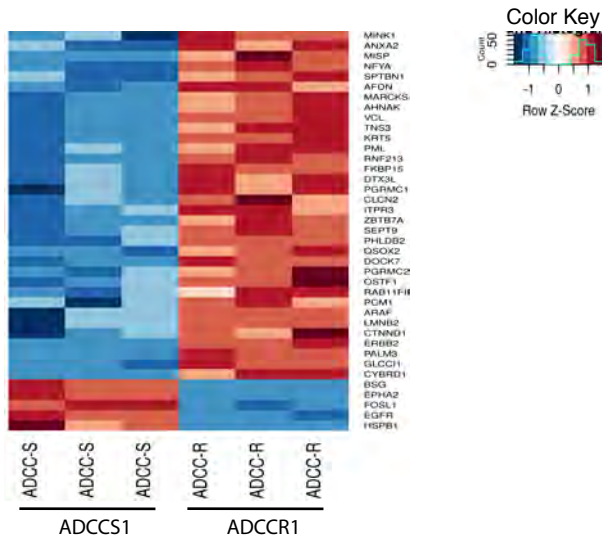
ADCCR1

Supplemental Figure 1:

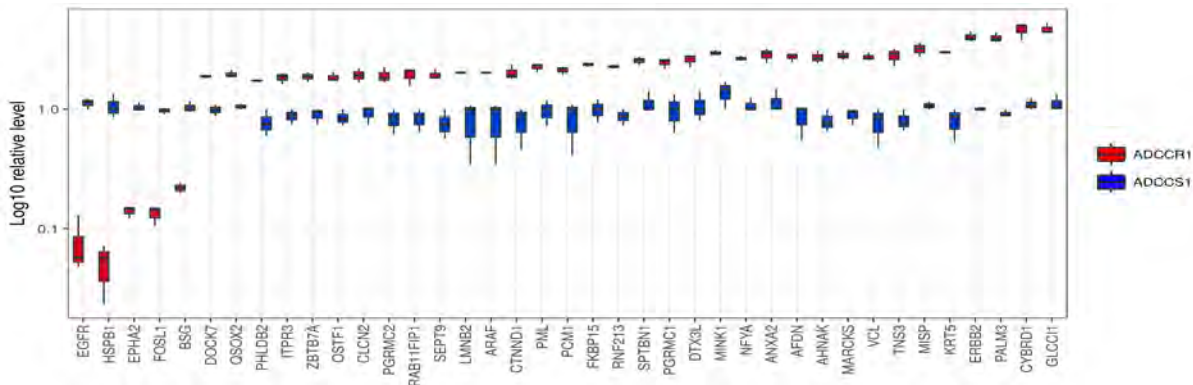
A.



B.



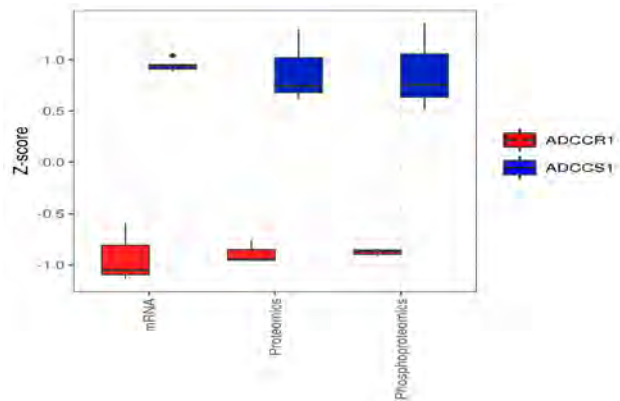
C.



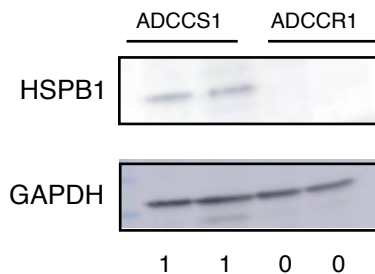
Supplemental Figure 2:

A.

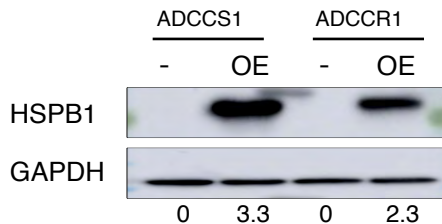
HSPB1



B.

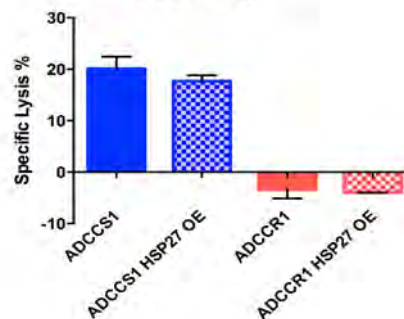


C.



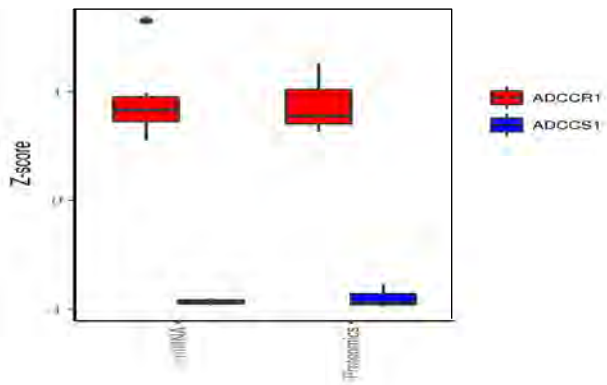
D.

ADCC Assay

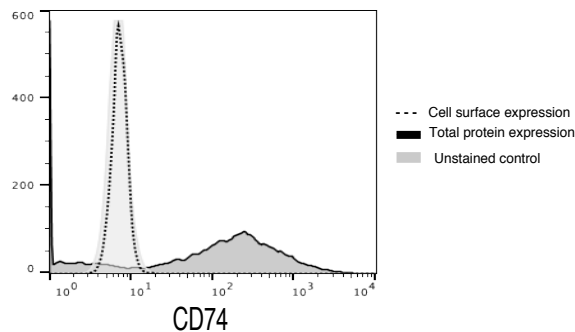


E.

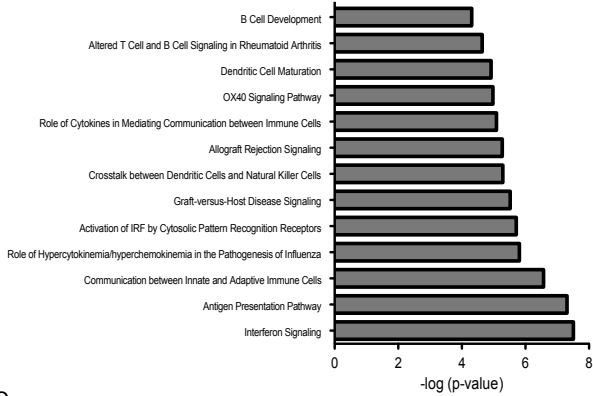
CD74



F.



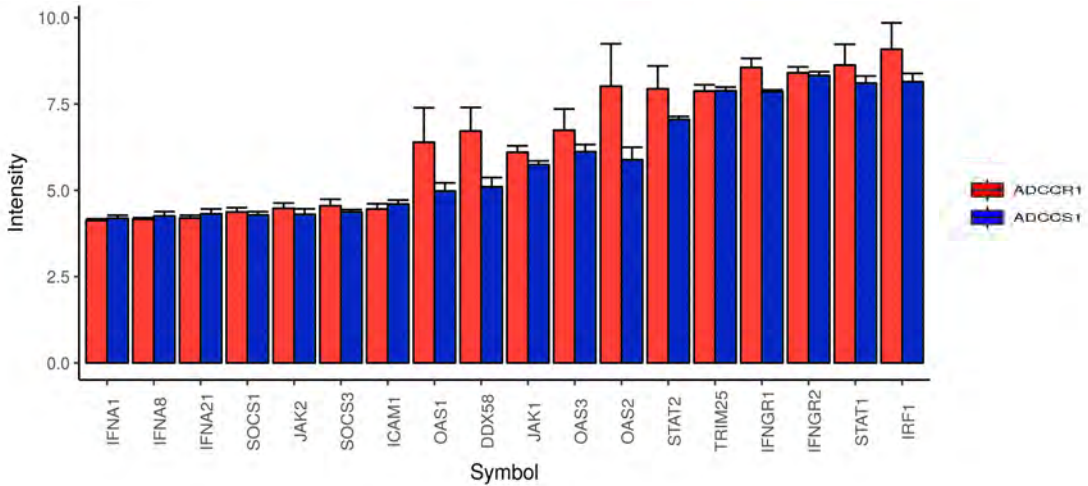
A.



B.

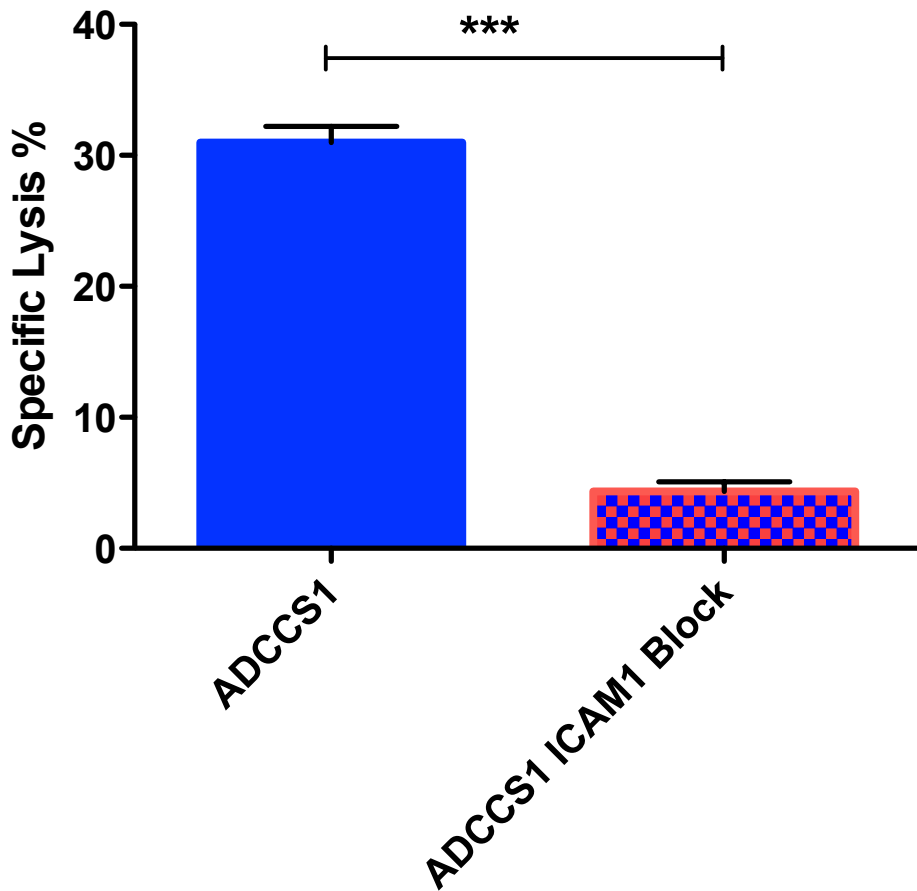
Upstream Regulator	Molecule Type	p-value of overlap
IFNG	Cytokine	1.62E-35
IFNA2	Cytokine	7.17E-33
IFNL1	Cytokine	4.63E-31
TLR3	Transmembrane receptor	3.66E-30
IRF7	Transcription regulator	5.84E-28
IL1RN	Cytokine	2.01E-26
TNF	Cytokine	7.03E-26
poly rI:rC-RNA	Biologic drug	2.42E-24
MAPK1	Kinase	2.52E-24
PRL	Cytokine	3.09E-24
STAT3	Transcription regulator	4.28E-23
IRF3	Transcription regulator	1.50E-20

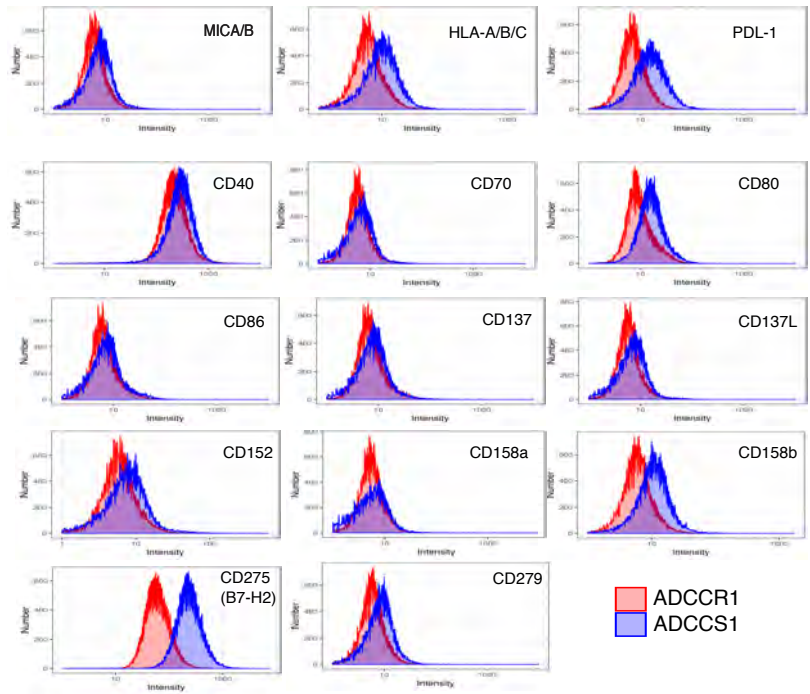
C.



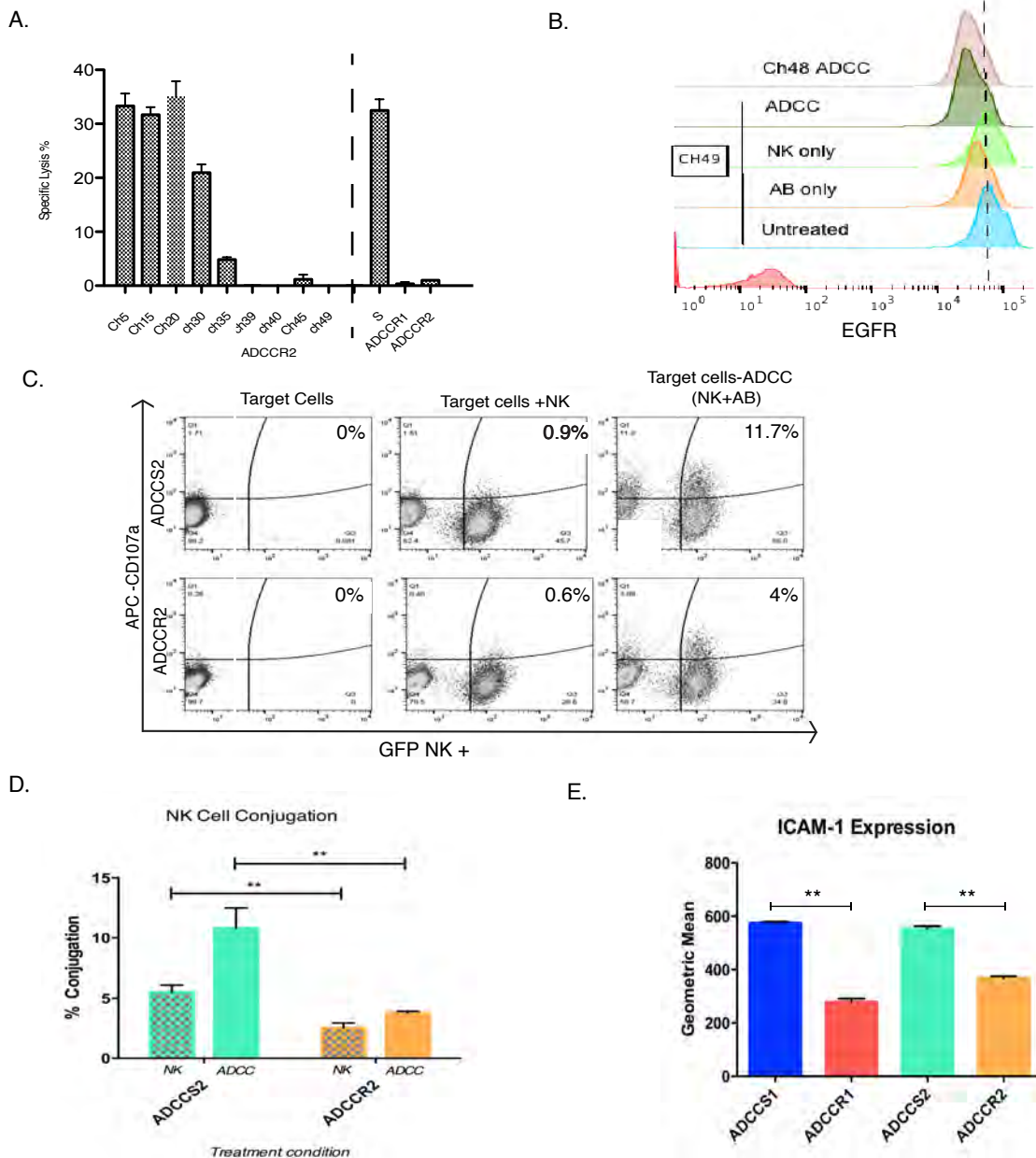
Supplemental Figure 4:

# ADCC Assay





Supplemental Figure 6:



Supplemental Figure 7:

**Supplemental Table 2 : BD Lyoplate Geometric Mean Values in ADCCS1 and ADCCR1**

<b>Cell surface molecule</b>	<b>Geometric Mean ADCCS1</b>	<b>Geometric Mean ADCCR1</b>	<b>Ratio</b>
CD99	18	106	5.89
CD227	18	71.3	3.96
CD24	5.33	11.4	2.14
CD11b	4.92	8.47	1.72
CD21	4.78	6.96	1.46
CD15	42.4	58.7	1.38
CD99R	5.37	6.96	1.30
CD105	5.26	6.2	1.18
CD29	29.6	34.7	1.17
CD15s	4.96	5.8	1.17
CD5	4.89	5.59	1.14
Cutaneous Lymph. Antigen	5.58	6.3	1.13
CD6	4.78	5.26	1.10
CD19	5.22	5.74	1.10
CD22	4.97	5.43	1.09
CD13	4.83	5.27	1.09
CD2	4.74	5.16	1.09
CD23	4.74	5.14	1.08
CD26	4.76	5.15	1.08
CD1d	4.78	5.12	1.07
CD31	5.57	5.94	1.07
CD11c	5.09	5.42	1.06
CD35	4.87	5.16	1.06
CD28	4.99	5.28	1.06
CD85	5.03	5.32	1.06
CD49a	10.7	11.3	1.06
CD4	4.69	4.95	1.06
CD116	5.15	5.43	1.05
CD16	4.74	4.98	1.05
CD340 (HER2)	212	221	1.04
CD25	4.97	5.17	1.04
CD117	5.14	5.33	1.04
CD3	4.77	4.94	1.04
CD70	5.15	5.33	1.03
CD33	5.11	5.27	1.03
CD137	6.25	6.42	1.03
CD43	5.85	5.97	1.02
CD18	5.08	5.18	1.02
CD7	4.96	5.04	1.02
CD8a	4.99	5.02	1.01
CD1a	5.04	5.06	1.00
CD8b	5.41	5.43	1.00
CD114	5.54	5.56	1.00
CD103	5.25	5.26	1.00



<b>Cell surface molecule</b>	<b>Geometric Mean ADCCS1</b>	<b>Geometric Mean ADCCR1</b>	<b>Ratio</b>
CD121a	5.31	5.28	0.99
CDw93	5.3	5.26	0.99
CD87	5.18	5.13	0.99
CD86	5.97	5.91	0.99
CD89	5.17	5.09	0.98
CD90	5.17	5.08	0.98
CD108	21.9	21.5	0.98
CD106	5.42	5.31	0.98
CD122	5.29	5.17	0.98
CD57	6.5	6.25	0.96
CD123	5.32	5.11	0.96
CD38	5.17	4.95	0.96
CD267	5.16	4.92	0.95
CD137Ligand	5.54	5.26	0.95
CD127	5.95	5.64	0.95
CDw327	5.47	5.18	0.95
CD275 (B7-H2)	5.82	5.51	0.95
Integrin	5.36	5.07	0.95
CD1b	6.08	5.75	0.95
CD294	5.19	4.89	0.94
CD120b	5.23	4.92	0.94
rlgG1	5.29	4.97	0.94
CD212	5.26	4.94	0.94
CD135	5.67	5.32	0.94
SSEA-3	5.52	5.17	0.94
CD231	5.67	5.31	0.94
CD278	5.33	4.99	0.94
CD45RB	5.88	5.49	0.93
CD36	6.13	5.71	0.93
TRA-1-81	5.51	5.11	0.93
CD229	5.59	5.17	0.92
CD336	5.49	5.07	0.92
CLIP	5.4	4.97	0.92
CD102	5.65	5.19	0.92
Invariant NKT	5.4	4.96	0.92
CD14	6.99	6.33	0.91
CD124	5.87	5.31	0.90
rlgM	5.37	4.85	0.90
CD4v4	6.03	5.44	0.90
CD200	5.71	5.15	0.90
CD128b	6.01	5.42	0.90
CD235a	5.95	5.36	0.90
Vb 23	5.54	4.98	0.90
CD180	5.8	5.21	0.90
CD37	5.75	5.15	0.90
rlgG2a	5.49	4.91	0.89
CD282	5.46	4.85	0.89

<b>Cell surface molecule</b>	<b>Geometric Mean ADCCS1</b>	<b>Geometric Mean ADCCR1</b>	<b>Ratio</b>
CD88	5.77	5.09	0.88
CD220	5.82	5.12	0.88
CD184	5.84	5.11	0.88
CD69	6.29	5.5	0.87
γδTCR	5.73	5	0.87
CD27	5.76	5.01	0.87
CD41b	5.94	5.16	0.87
CD64	10.7	9.29	0.87
CD45RO	6.57	5.69	0.87
mIgG1	5.68	4.91	0.86
SSEA-1	54.9	47.4	0.86
CD118 (LIFRcptr)	6.73	5.81	0.86
TRA-1-60	6.13	5.28	0.86
CD147	584	503	0.86
CD195	6.28	5.37	0.86
CD244	6.02	5.13	0.85
CMRF-44	6.05	5.15	0.85
CD197	6.22	5.28	0.85
CD144	6.33	5.37	0.85
mIgG2a	5.77	4.89	0.85
Disialo- ganglio- side GD2	6.16	5.22	0.85
CD152	6.12	5.18	0.85
CD134	6.31	5.34	0.85
CD120a	7.32	6.1	0.83
CD181	6.22	5.18	0.83
CD30	6.08	5.05	0.83
BLTR-1	5.95	4.94	0.83
CD226	6.17	5.12	0.83
mIgG2b	6.01	4.98	0.83
CD177	7.05	5.77	0.82
CD153	6.19	5.05	0.82
CD11a	9.68	7.89	0.82
CD172b	7.47	6.06	0.81
CD40	266	212	0.80
CD91	6.62	5.25	0.79
CD196	6.75	5.35	0.79
CD210	6.33	4.84	0.76
CD171	6.96	5.32	0.76
CD79b	7.47	5.7	0.76
CD209	8.33	6.3	0.76
CD279	6.54	4.93	0.75
SSEA-4	6.71	5.05	0.75
CD309	6.53	4.91	0.75
CD32	7.01	5.27	0.75
CD10	8.62	6.48	0.75
CD243(p-glyco	7.25	5.38	0.74

<b>Cell surface molecule</b>	<b>Geometric Mean ADCCS1</b>	<b>Geometric Mean ADCCR1</b>	<b>Ratio</b>
Protein)			
CD42b	7.34	5.44	0.74
CD100	7.54	5.58	0.74
CD178	7.03	5.2	0.74
CD49b	531	392	0.74
NKB1	6.97	5.13	0.74
CD158a	7.12	5.17	0.73
HLA- A2	6.86	4.98	0.73
CD71	197	143	0.73
CD206	7.2	5.2	0.72
CD20	7.16	5.15	0.72
CD255(Tweak)	7.26	5.22	0.72
CD132	7.15	4.98	0.70
CD268	9.8	6.78	0.69
CD140a	7.59	5.25	0.69
CD94	7.37	5.09	0.69
CD146	7.46	5.14	0.69
CD150	7.43	5.11	0.69
CD183	7.51	5.15	0.69
MIC A/B	34.5	23.6	0.68
CD193	8.59	5.75	0.67
CD337	7.92	5.17	0.65
CD314 (NKG2D)	7.5	4.87	0.65
CD84	10.2	6.62	0.65
CD55	762	483	0.63
CD62E	8.75	5.41	0.62
CD66f	8.81	5.38	0.61
Hem. Prog. Cell	8.4	5.04	0.60
CD80	15.2	8.95	0.59
CD45RA	10.3	6.04	0.59
CD335 (NKP46)	8.63	5.02	0.58
mIgM	9.13	5.26	0.58
CD58	1448	834	0.58
CD75	10.5	6	0.57
CD39	9.5	5.32	0.56
fmlp-Receptor	9.11	5.07	0.56
CD47	1068	587	0.55
CD158b	9.42	5.17	0.55
CD97	10.7	5.84	0.55
Vb 8	9.59	5.19	0.54
CD48	10.3	5.44	0.53
CD59	1201	633	0.53
CD130	80.4	42.2	0.52
b7	10.1	5.25	0.52
CD151	114	57.2	0.50
CD119	79.3	39.4	0.50
CD77	12.7	6.27	0.49

<b>Cell surface molecule</b>	<b>Geometric Mean ADCCS1</b>	<b>Geometric Mean ADCCR1</b>	<b>Ratio</b>
CD112	54.5	26.6	0.49
CD221	108	52.1	0.48
CD273	13.2	6.32	0.48
CD49c	1478	707	0.48
CD107b	20.7	9.69	0.47
CD46	1201	559	0.47
CD162	11.1	5.08	0.46
HLA- DQ	12.5	5.7	0.46
CD163	12	5.46	0.46
mIgG3	10.7	4.85	0.45
CD53	12.4	5.6	0.45
HLA- A,B,C	1126	504	0.45
CD321 (F11Rcptr)	929	415	0.45
HLA- DR,DP, DQ	12.1	5.37	0.44
CD305 (LAIR-1)	11.2	4.85	0.43
CD66(a,c,d,e)	35.5	14.8	0.42
CD107a	22	9.1	0.41
CD109	95.5	39	0.41
CD81	1748	711	0.41
CD74	15.4	6.1	0.40
CD41a	13.8	5.33	0.39
CD9	1100	388	0.35
CD51/61	15.7	5.43	0.35
CD165	15.5	5.34	0.34
CD271	29.1	9.84	0.34
CD142	2132	688	0.32
CD62P	17.6	5.55	0.32
CMRF-56	16.2	5.07	0.31
CD205	58.6	18.3	0.31
CD49d	19.7	6.09	0.31
CD140b	16.3	4.99	0.31
EGFR	1987	605	0.30
CD44	2577	778	0.30
CD164	283	83.7	0.30
CD95	739	209	0.28
CD274	220	56.4	0.26
rlgG2b	19.5	4.87	0.25
CD54	969	236	0.24
CD154	21.9	5.07	0.23
CD73	817	188	0.23
CDw328	22.2	5.04	0.23
b2micro globulin	308	69.1	0.22
CD66b	25.2	5.57	0.22
CD166	605	133	0.22
CD104	806	169	0.21
abTCR	24.9	5.09	0.20

<b>Cell surface molecule</b>	<b>Geometric Mean ADCCS1</b>	<b>Geometric Mean ADCCR1</b>	<b>Ratio</b>
CD62L	28	5.67	0.20
CD326	1109	218	0.20
CD56	27.5	5.4	0.20
CD161	26.2	4.95	0.19
CD83	39	7.36	0.19
CD72	32.3	5.81	0.18
CD138	1096	189	0.17
CD50	35.9	5.94	0.17
CD63	434	64.4	0.15
CD201	143	20.6	0.14
HLA- DR	40.6	5.39	0.13
CD49f	1362	178	0.13
CD45	51	5.59	0.11
CD49e	338	36.6	0.11
CDw329	54.1	4.94	0.09
CD141	546	49.5	0.09
CD34	73.9	5.33	0.07
CD42a	83.5	5.63	0.07
CD338 (ABCG2)	127	6.72	0.05
CD126	118	5.92	0.05
CD61	193	5.83	0.03