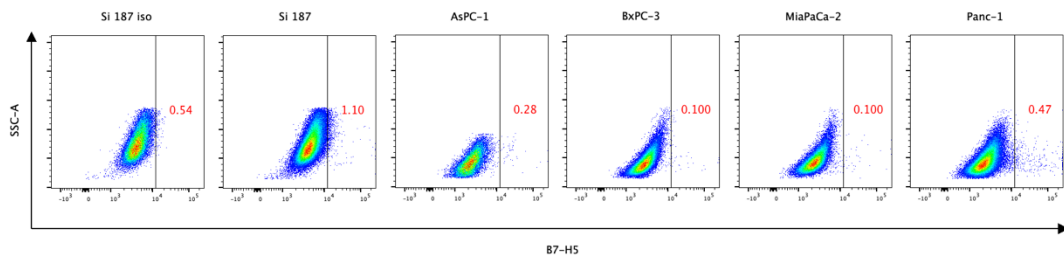
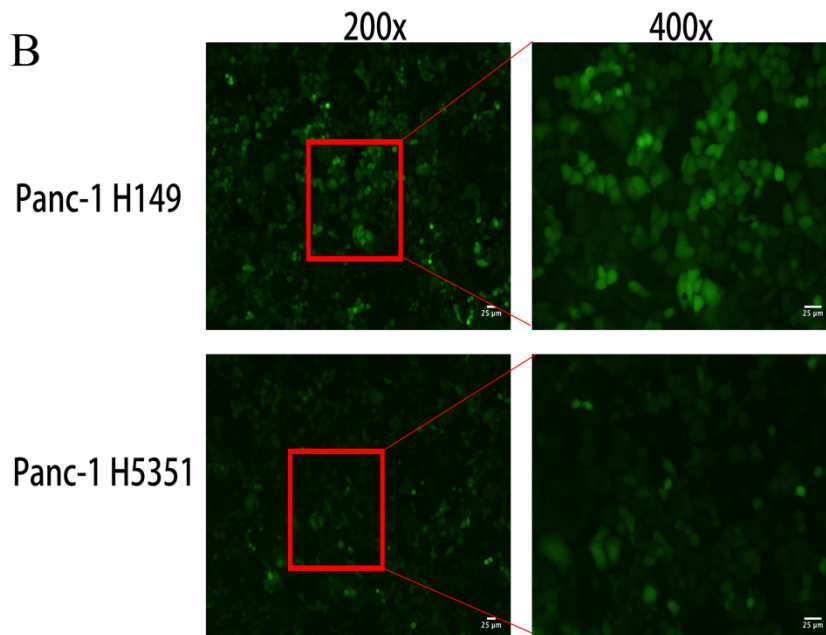
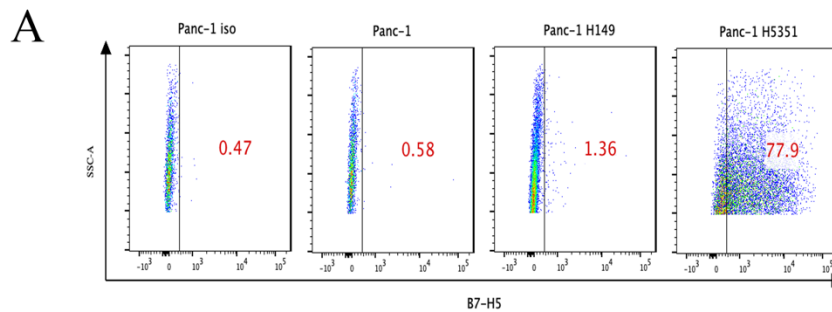


Supplement Figure S1 (No significant B7-H5 expression was observed in PC cells)



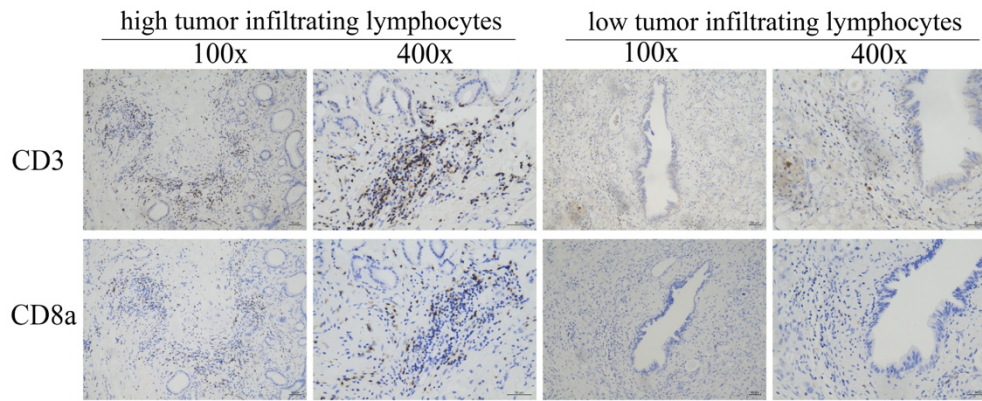
The expression of B7-H5 on different pancreatic cancer cell lines (including our primary cell line Si187) was measured by flow cytometry. No significant positive expression was found among these cell lines.

Supplement Figure S2 (Phenotypes of Panc-1 H149 and Panc-1 H5351)



A. The B7-H5 plasmid was transfected into Panc-1 cells. The B7-H5 expressing cell line was named Panc-1 H5351. Panc-1 H149 was employed as a negative control. B. GFP expression in the Panc-1 H149 and Panc-1 H5351 was confirmed by fluorescence microscopy.

Supplement Figure S3 (Pattern of pancreatic cancer tumor infiltrated lymphocytes)



Anit-humanCD3 and CD8 were staining in 58 paraffin embedded pancreatic cancer samples to investigated the status of tumor infiltrated lymphocytes(left panel: high-TIL; right panel: low-panel).

Supplement Table S1 (Primer information)

Gene	Forward(5' to3')	Reversed (5' to3')
β -actin	TGGCACCCAGCACAATGAA	CTAAGTCATAGTCCGCCTAGAAGCA
B7-H5	TTGCAGAGCCCAGCTAGAAG	GGCCATTGCCTGGAATTGTG

Primer information for real time PCR of human β -actin and B7-H5.

Supplement Table S2 (General characteristics information)

General Characteristics of patients	Mean(range)
Age (year-old)	65.3 (35-75)
Tumor size (mm ³)	19.8 (0.5-126)
CA19-9 (u/ml)	2015.9 (2-12000)

General characteristics information of 136 patients.

Supplement Table S3 (Correlation between the clinical characteristics and B7-H5 expression)

Characteristics of patient population	Correlations with B7-H5 expression (Spearman)	P value
Tumor grading	-0.025	0.772
Clinical TNM staging	-0.097	0.259
Status of TIL	-0.3	0.825

No correlation between those clinical characteristics and B7-H5 expression was found.

Supplement Table S4 (Multivariable COX survival analysis)

Characteristics of patient population	P value
Gender	0.642
Age	0.733
Tumor size	0.985
Tumor grading	0.081
CA19-9	0.699

Multivariable COX analysis revealed no significant correlations between the survival of pancreatic cancer patients and those factors.