

# The Cyclin-Dependent Kinase 5 Inhibitor Peptide Inhibits Herpes Simplex Virus Type 1 Replication

**Adrian Man <sup>1,2</sup>; Mark Slevin <sup>\*3,4</sup>, Eugen Petcu <sup>5</sup>, Cornel Fraefel <sup>1</sup>**

1. *Institute of Virology, University of Zurich, Zurich, Switzerland*
2. *Department of Microbiology, University of Medicine and Pharmacy of Tîrgu Mureş, Romania*
3. *University of Medicine and Pharmacy of Tîrgu Mureş, Romania*
4. *School of Healthcare Science, Manchester Metropolitan University, Manchester, UK*
5. *Griffith University, Gold Coast, Brisbane, Australia*

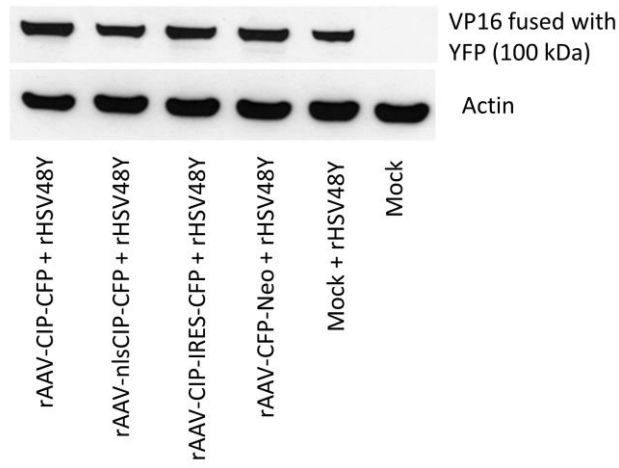
\*Correspondence to: [M.A.Slevin@mmu.ac.uk](mailto:M.A.Slevin@mmu.ac.uk)

10	20	30	40	50
MGTVLSLSPS	YRKATLFEDG	AATVGHYTA	QNSKNAKDKN	LKRHSIISVL
60	70	80	90	100
PWKRIVAVSA	KKKNSKKVQP	NSSYQNNITH	LNNENLKKSL	SCANLSTFAQ
110	120	130	140	150
PPPAQPPAPP	ASQLSGSQTG	GSSSVKKAPH	PAVTSAGTPK	RVIVQASTSE
160	170	180	190	200
LLRCLGEFLC	RRCYRLKHL	PTDPVLWLR	VDRSLLLQGW	QDQGFITPAN
210	220	230	240	250
VVFLYMLCRD	VISSEVGS	ELQAVLLTCL	YLSYSYMGNE	ISYPLKPFLV
260	270	280	290	300
ESCKEAFWDR	CLSVINLMSS	KMLQINADPH	YFTQVFSDLK	NESGQEDKKR
307				
LLLGLDR				
■ p10 ■ p25 ■ CIP				
CIP gene sequence (direct strand +):				
TGCCTGGGTGAGTTTCTCTGCCGCCGGTGCTACCGCCTGAAGCACCTGTCCCCACGGACCCCGT				
GCTCTGGCTGCGCAGCGTGGACCGCTCGCTGCTTCTGCAGGGCTGGCAGGACCAGGGCTTCATCA				
CGCCGGCCAACGTGGTCTTCCTCTACATGCTCTGCAGGGATGTTATCTCCTCCGAGGTGGGCTCG				
GATCACGAGCTCCAGGCCGTCTGCTGACATGCCTGTACCTCTCCTACTCCTACATGGGCAACGA				
GATCTCCTACCCGCTCAAGCCCTTCTGGTGGAGAGCTGCAAGGAGGCCTTTTGGGACCGTTGCC				
TCTCTGTCATCAACCTCATGAGCTCAAAGATGCTGCAGATAAATGCCGACCCAT				

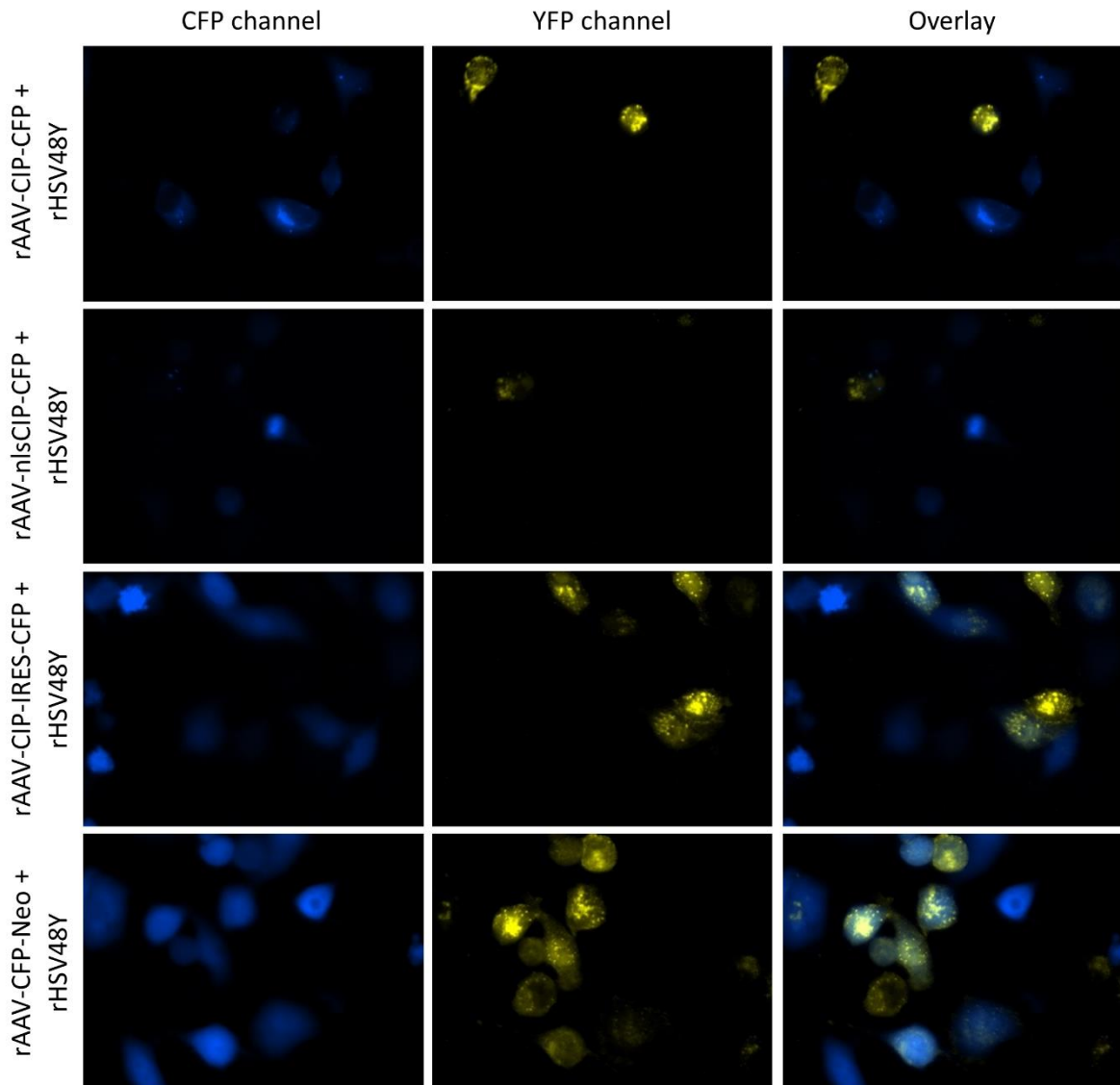
Supplemental Figure 1. CIP structure. CIP is a 125 amino acid peptide with a molecular weight of 12.5 kDa.

(A) RT-PCR results		(B) qRT-PCR results			
Cell lines	Replicate	CT values			
		rAAV-CIP-CFP	rAAV-nlsCIP-CFP	rAAV-CIP-IRES-CFP	
HeLa	1	29.73	33.71	31.19	
	2	27.43	31.38	28.94	
	3	28.57	32.56	30.06	
HeLa + wtHSV-1	1	30.59	34.09	31.67	
	2	30.39	34.35	31.78	
	3	30.06	33.50	31.12	
293T	1	22.41	27.00	23.79	
	2	22.30	26.83	23.79	
	3	21.83	26.41	23.22	

Supplemental Figure 2. Data showing PCR results for CIP expression by electrophoresis of the RT-PCR products (A) or by qRT-PCR CT values (B).



Supplemental Figure 3 (cropped image). Western-blot for HeLa cells co-infected with rAAV vectors and rHSV48Y.



Supplemental Figure 4. Suggestive images from epifluorescence microscopy following the coinfection of rAAV-CIP vectors and rHSV48Y