

## Supplementary Information

### **UVA-activated riboflavin promotes collagen crosslinking to prevent root caries**

R. Uemura<sup>1\*</sup>, J. Miura<sup>2</sup>, T. Ishimoto<sup>3</sup>, K. Yagi<sup>1</sup>, Y. Matsuda<sup>4</sup>, M. Shimizu<sup>2</sup>, T. Nakano<sup>3</sup>,  
M. Hayashi<sup>1</sup>

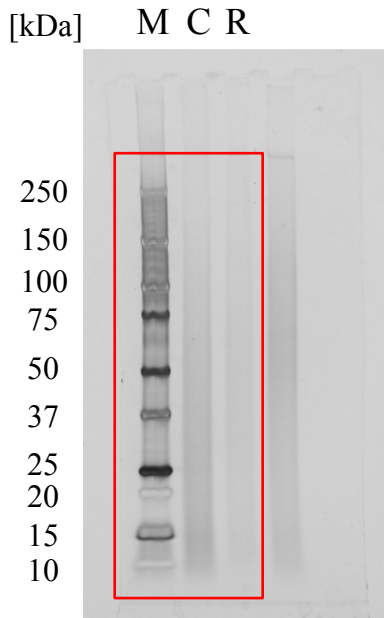
<sup>1</sup> Department of Restorative Dentistry and Endodontology, Graduate School of Dentistry, Osaka University, Osaka, Japan

<sup>2</sup> Division for Interdisciplinary Dentistry, Graduate School of Dentistry, Osaka University, Osaka, Japan

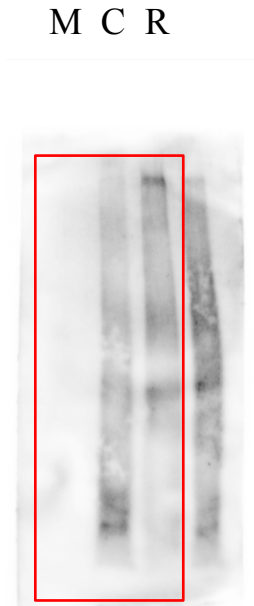
<sup>3</sup> Division of Materials and Manufacturing Science, Graduate School of Engineering, Osaka University, Osaka, Japan

<sup>4</sup> Division of Clinical Cariology and Endodontology, Graduate School of Dentistry, Health Sciences University of Hokkaido, Hokkaido, Japan

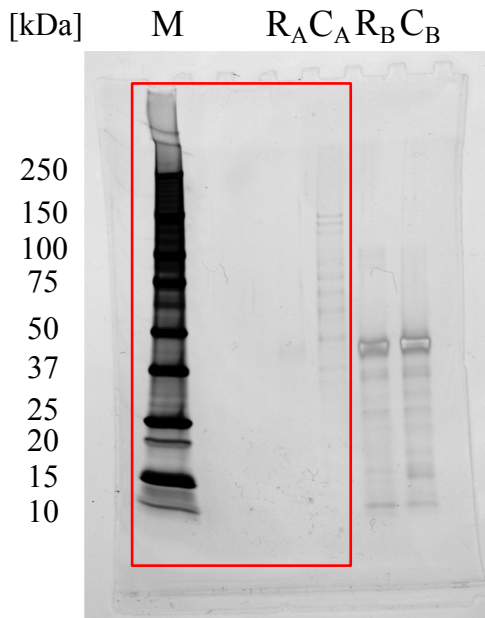
(a) Silver stain



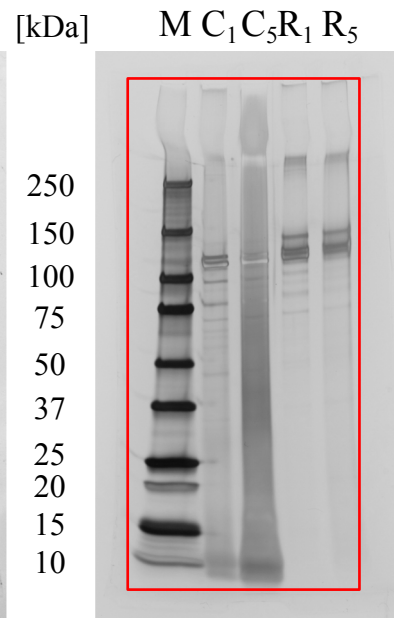
(b) Anti-collagen



(c) Pepsin-resistance



(d) Collagenase-resistance



**Supplementary Figure S1.** Full-length gels and blots for Figure 5.

Red squares indicate where the images were cropped.

M: marker, C: control group, R: RF/UVA treatment group, R<sub>A</sub>, C<sub>A</sub>: appropriate concentration of pepsin solution, R<sub>B</sub>, C<sub>B</sub>: 10 times higher concentration of pepsin solution, C<sub>1</sub>, C<sub>5</sub>: control group, treated by collagenase for 1 or 5 days, R<sub>1</sub>, R<sub>5</sub>: the RF/UVA group, treated by collagenase for 1 or 5 days.