

Mesencephalic astrocyte-derived neurotropic factor is an important factor in chondrocyte ER homeostasis.

Cell Stress and Chaperones

Bell PA^{1#}, Dennis EP^{1,2#}, Hartley CL^{2*}, Jackson RM¹, Porter A³, Treumann A³, Boot-Handford RP², Pirog KA^{1\$}, Briggs MD^{1,2}.

¹ Institute of Genetic Medicine, Newcastle University, International Centre for Life, NE1 3BZ Newcastle Upon Tyne, UK

² Wellcome Trust Centre for Cell-Matrix Research, University of Manchester, Oxford Road, M13 9PT Manchester, UK

³ Newcastle University Protein and Proteome Analysis Facility, Newcastle University, NE1 7RU Newcastle Upon Tyne, UK

both authors contributed equally to this work

* current affiliation: Genomic Diagnostics Laboratory, Manchester Centre for Genomic Medicine, Manchester University Hospitals NHS Foundation Trust, Manchester, M13 9WL

\$ corresponding author: katarzyna.pirog@ncl.ac.uk +44(0) 191 241 8816

Figure 1. a) Hematoxylin and eosin staining of cross sections of *Manf*^{+/+} and *Manf*^{-/-} lungs at E17.5, E18.5 and E19.5 showing a decrease in alveolar space across the ages. **b)** Quantification of the alveolar number, alveolar space per section and average alveolar space at E17.5, E18.5 and E19.5 (n=2). Key: ** P<0.01, * P<0.05, # P~0.05 (approaching significance).

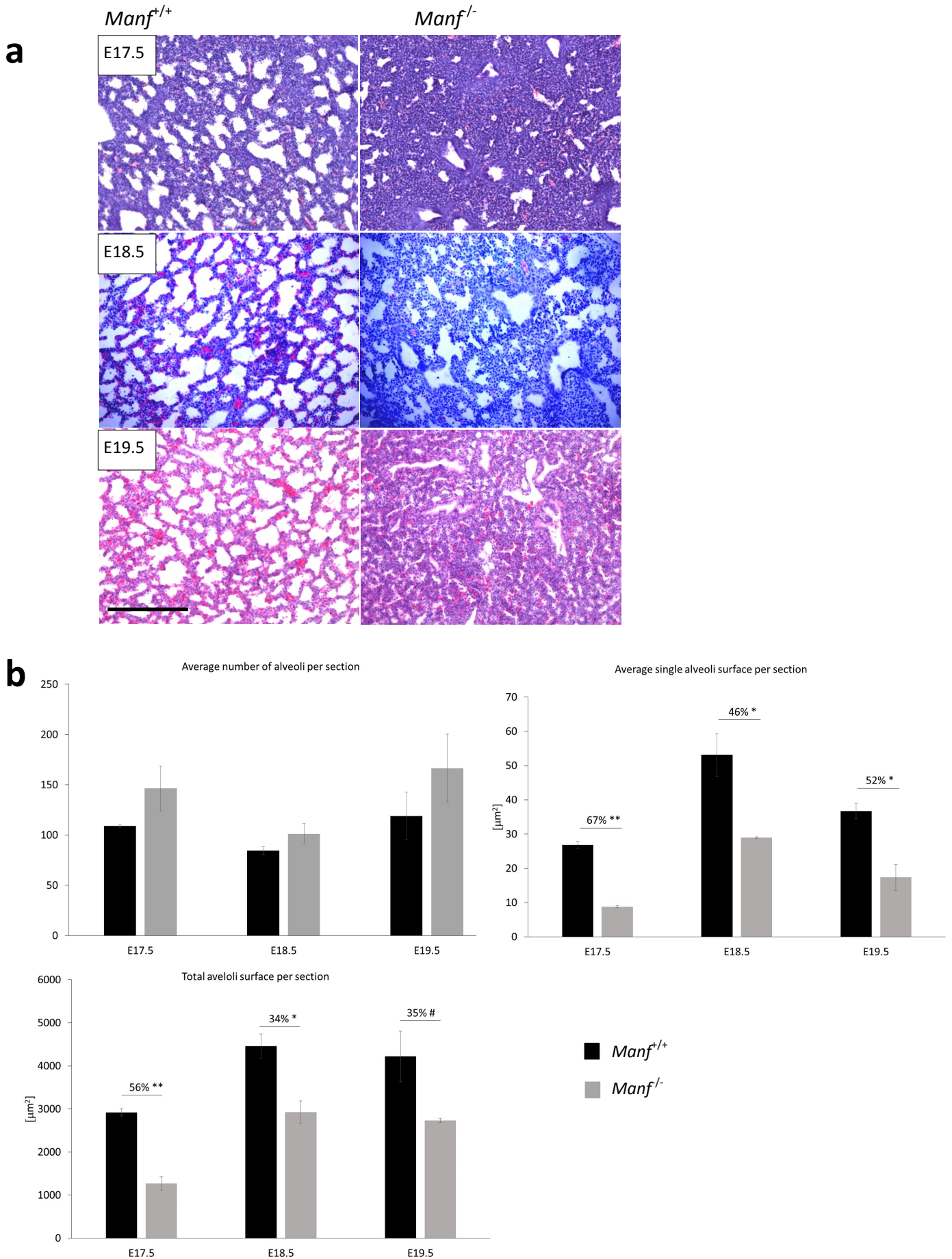


Figure 2. a) X-rays of *Manf*^{+/+} and *Manf*^{-/-} 50% C57BL6/J 50% 129Sv mice at 3 weeks showing the effect of global MANF deletion on long bone growth. **b)** Hematoxylin and eosin staining of cartilage growth plates from *Manf*^{+/+} and *Manf*^{-/-} 50% C57BL6/J 50% 129Sv mice at 3 weeks showing normal growth plate organisation in wild type and MANF null mice at 3 weeks. Key: scale bar = 200um.

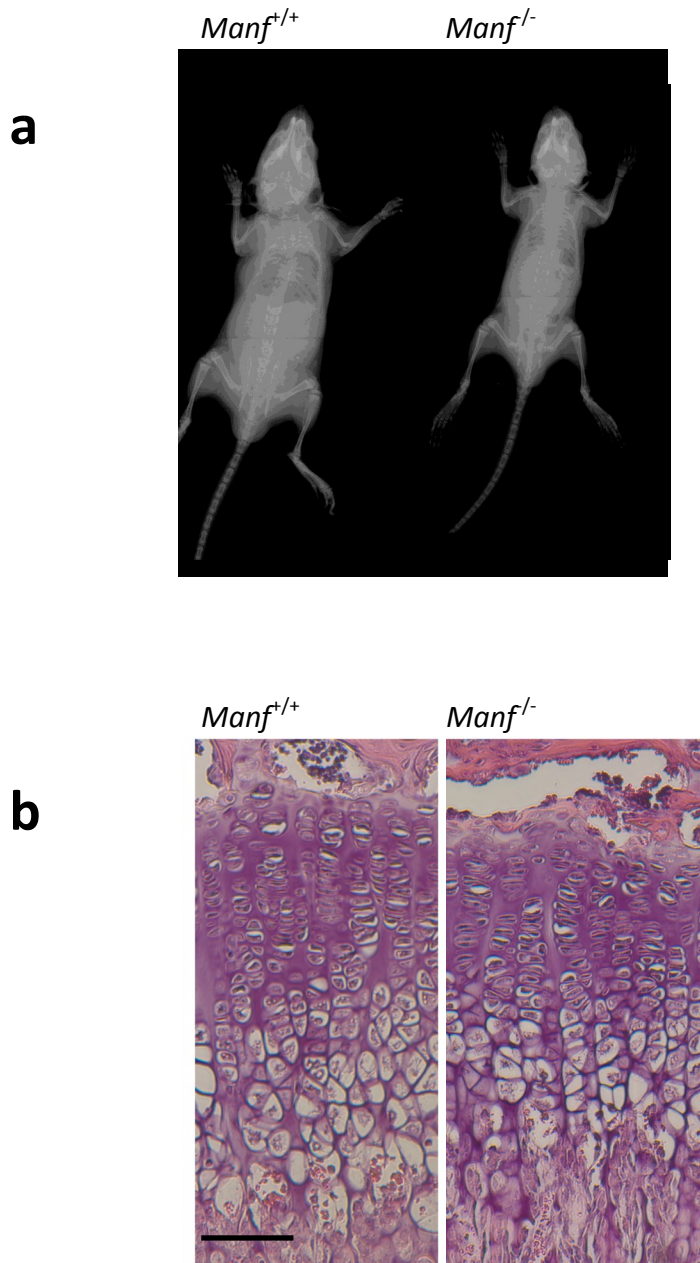


Figure 3. a) Loading control (total protein) for Figure 4b and c. **b)** Loading Loading control (total protein) for Figure 5b. **c)** Loading control for Figure 6 b and c.

