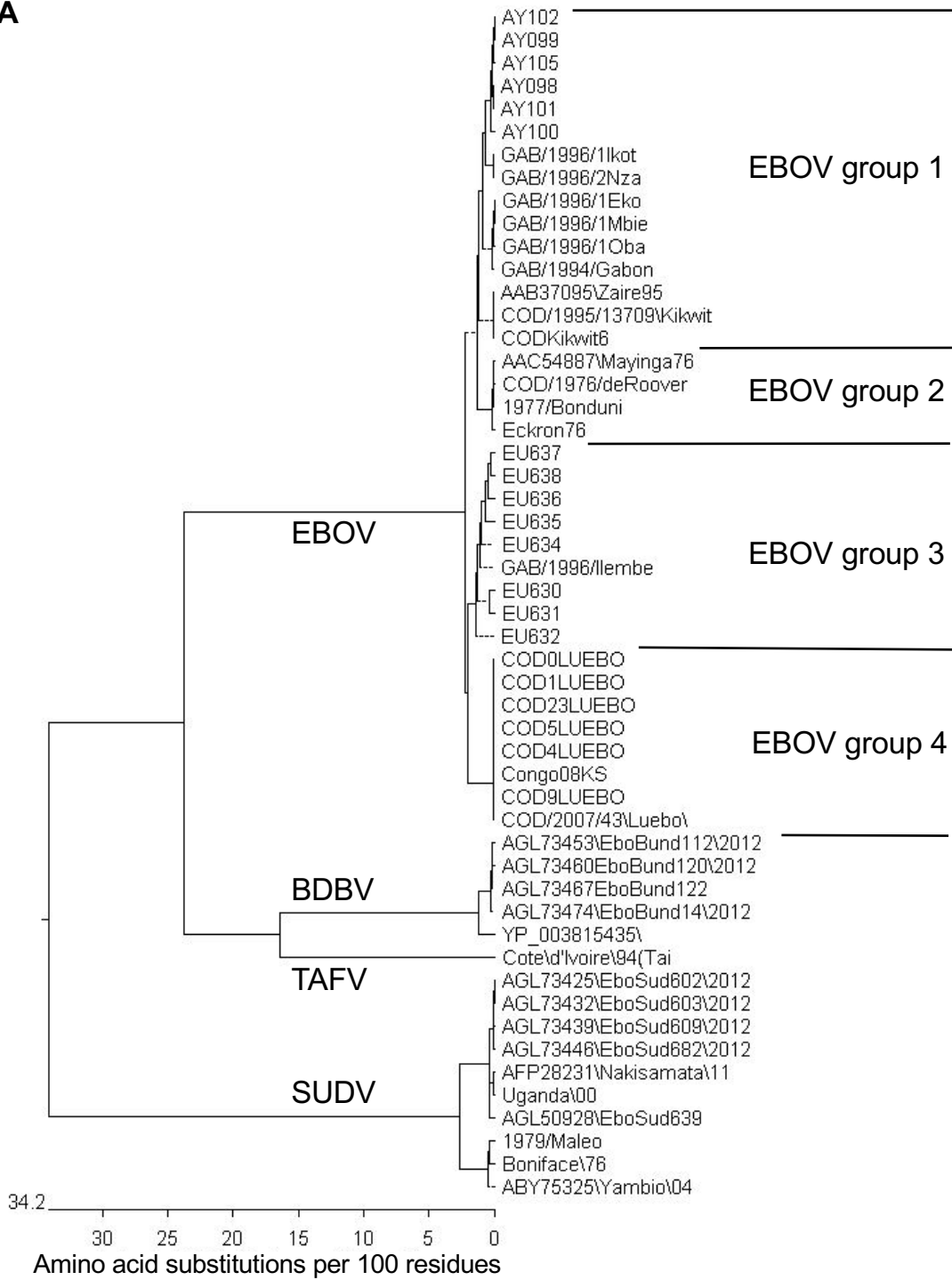


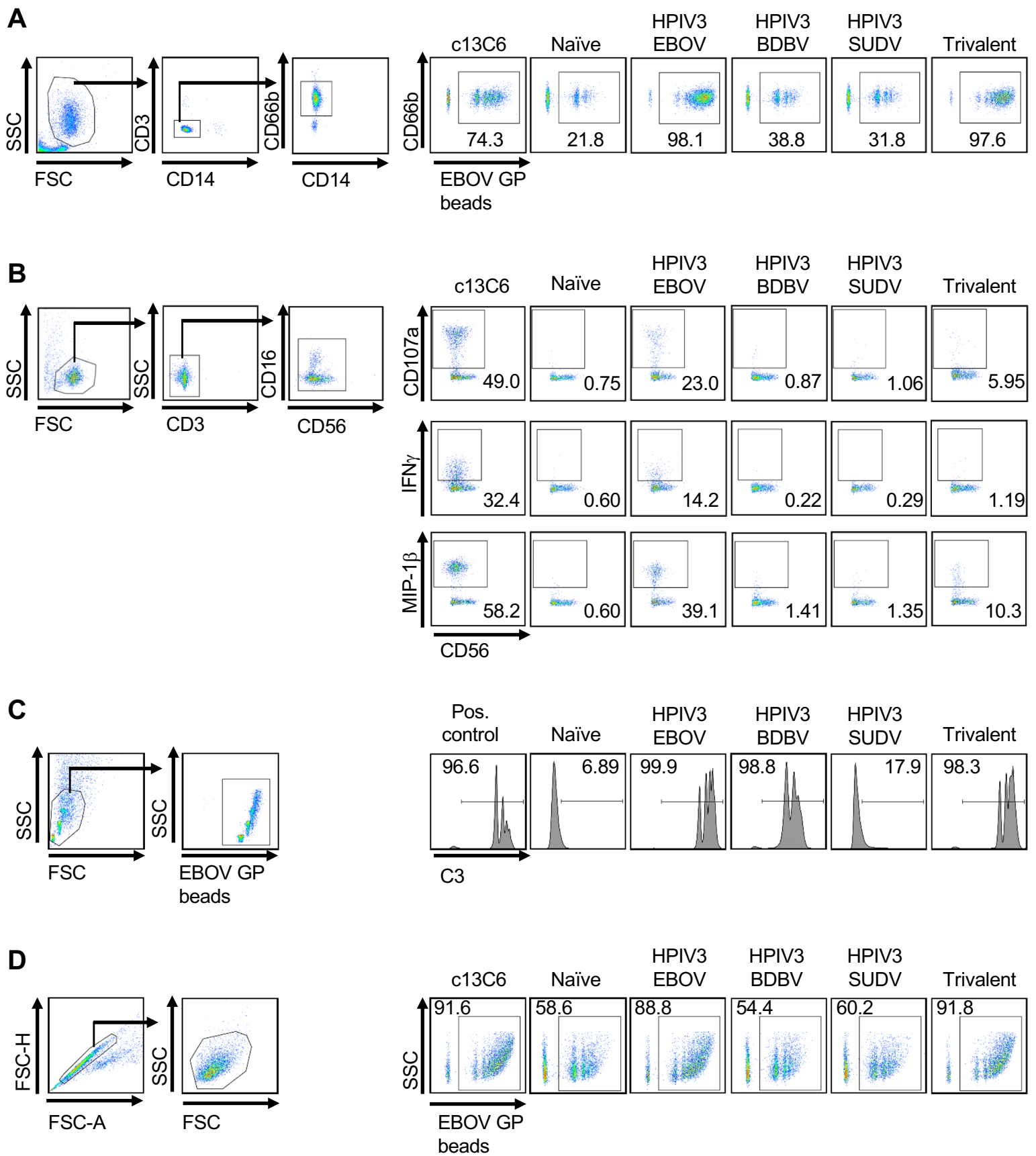
A



B

| | | | | | | | |
|-----------|------------|---------|------------|---------|-----------|------|------|
| 1st Level | EBOV G1+G2 | | EBOV G3+G4 | | | | |
| 2nd Level | EBOV | | | | BDBV/TAFV | SUDV | |
| 3rd Level | EC1 | | | | | | |
| 1st Level | EBOV G1 | EBOV G2 | EBOV G3 | EBOV G4 | BDBV | TAFV | |
| 2nd Level | EBOV | | | | BDBV/TAFV | | SUDV |
| 3rd Level | EC2 | | | | | | |

Supplemental Figure 1. Phylogenetic tree (**A**) and schematic showing the approach to create consensus sequences (**B**). The accession numbers of the sequences included in the phylogenetic analysis are as follows: Zaire95 (accession # AAB37095), Mayinga (AAC54887), deRoover (AGB56839), Bonduni (AGB56749), 13709 kikwit (AGB56821), Eckron76 (P87671), EboBund112\2012 (AGL73453), EboBund120\2012 (AGL73460), EboBund122 (AGL73467), EboBund14\2012 (AGL73474), Côte d'Ivoire (AAB37093), YP_003815435 (YP_003815435), Yambio (ABY75325), Nakisamata (AFP28231), EboSud639 (AGL50928), EboSud602 (AGL73425), EboSud603 (AGL73432), EboSud639 (AGL73439), EboSud682 (AGL73446), Maleo (AGB56678), Boniface (Q66814), Uganda\00 [Gulu] (YP_138523), Congo08KS (AER59712), AY098 (AY526098), AY099 (AY526099), AY100 (AY526100), AY101 (AY526101), AY102 (AY526102), AY105 (AY526105), EU630 (EU051630), EU631 (EU051631), EU632 (EU051632), EU634 (EU051634), EU635 (EU051635), EU636 (EU051636), EU637 (EU051637), EU638 (EU051638), 43/Luebo (KC242788), 1994/Gabon (KC242792), 1Eko (KC242793), 2Nza (KC242794), 1Oba (KC242797), 1Mbie (KC242795), 1Ikot (KC242798), Ilembé (KC242800), CODKikwit6 (KC242796), COD0Leubo (KC242785), COD1Leubo (KC242786), COD23Leubo (KC242787), COD4Leubo (KC242789), COD9Leubo (KC242784) and COD5Leubo (KC242790).



Supplemental Figure 2. Flow cytometry gating strategy for evaluation of Fc-mediated protective functions. **A**, antibody-dependent neutrophil phagocytosis. **B**, antibody-dependent activation of NK cells. **C**, antibody-dependent complement deposition. **D**, antibody-dependent monocyte phagocytosis. Representative flow cytometry plots of samples within the indicated vaccination groups in response to recombinant EBOV GP are shown on the right. The c13C6 mAb was used as a positive control.