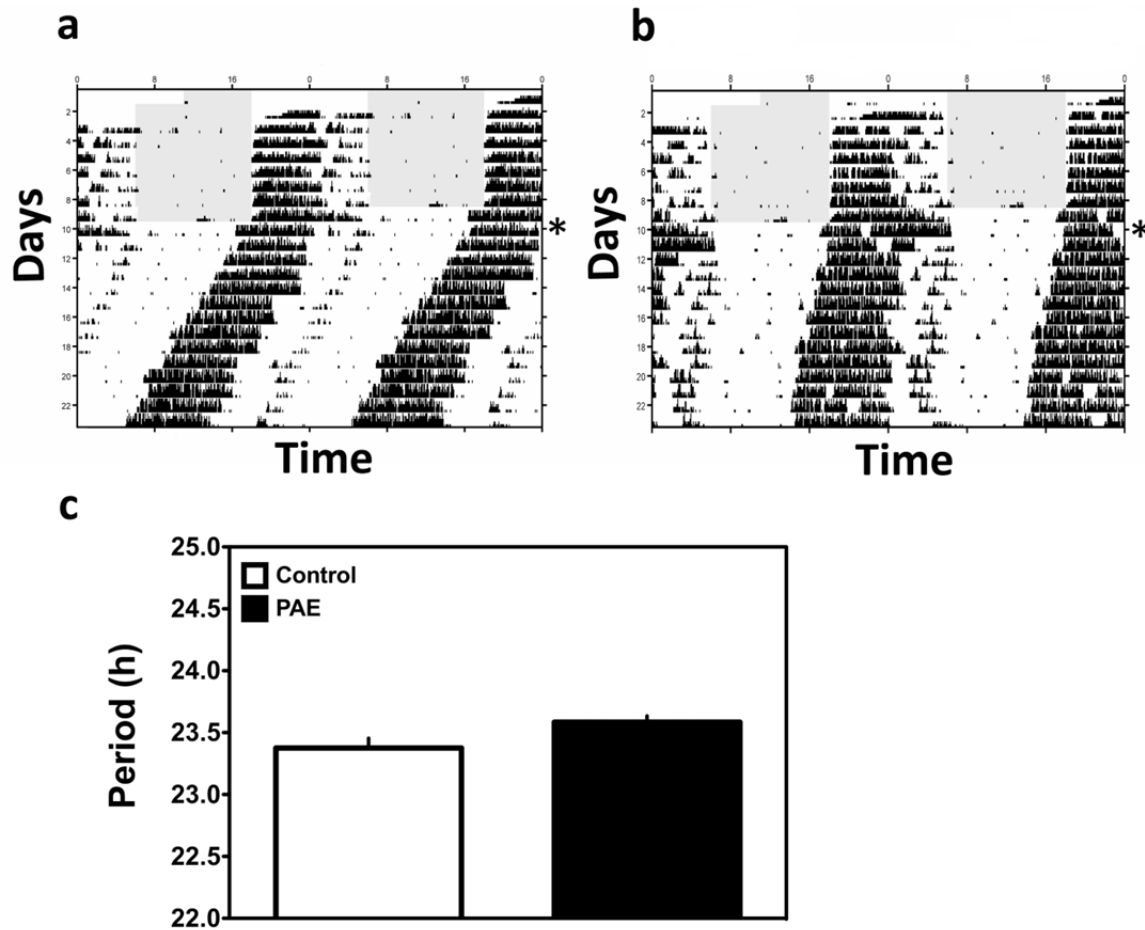


Mereness et al., Supplemental Data



Supplemental Figure S1. Free-running rhythms of wheel-running behavior are not affected by androgen-dependent developmental programming. Representative double plotted actograms of wheel running activity of a PAE (a) and control (b) mouse. The gray area in a, b indicate the 12h light phase. Animals were released into DD after 7 days and activity was recorded for 14 days in DD. The asterisk to the right of each actogram indicates the first day of DD. c) Periodogram analysis confirms no effect of PAE on the free-running period of wheel running activity.