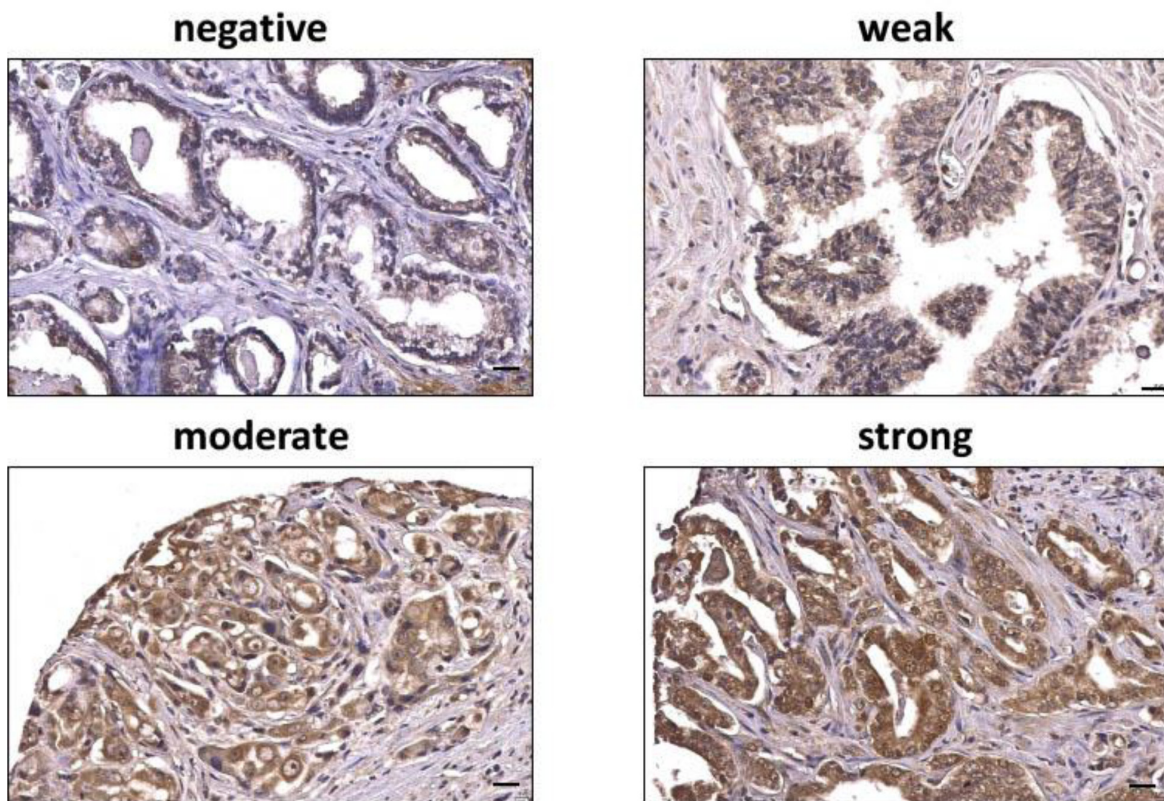


Prostate-specific loss of UXT promotes cancer progression

SUPPLEMENTARY MATERIALS



Supplementary Figure 1: UXT expression levels in human prostate. Human prostate specimens from PCBN were subjected to IHC analysis with rabbit anti-human UXT antibody. UXT expression level was categorized as negative, weak, moderate, or strong.

Supplementary Table 1: Clinicopathologic characteristics of overall cohort

	Mean (Std. Dev.)	60.5 ± 7.1
Age (y)	Mean (Std. Dev.)	6.8 ± 6.0
PSA at diagnosis (ng/mL)	T1	127 (62.3%)
	T2	33 (16.2%)
	Tx/Unknown	44 (21.5%)
Pathological T Stage	pT2	138 (67.6%)
	pT3	65 (31.9%)
	Gleason Sum	5
Surgical Margins	6	68 (33.3%)
	7	108 (52.8%)
	8	8 (3.9%)
	9	18 (8.8%)
	Negative	171 (83.8%)
Extension	Positive	33 (16.2%)
	Negative	198 (97.1%)
SVI	Positive	6 (2.9%)
	Negative	186 (91.2%)
Outcome (%)	Positive	18 (8.8%)
	Nil Relapse	164 (80.4%)
	Relapse	38 (18.6%)
Length of Follow-up	Lost Follow-up	2 (1.0%)
	Mean (months)	82
Period Disease Free	Mean (months)	31
Race	African-American	5
	Asian	5
	Other	7
	Caucasian	176
	Unknown	8

Supplementary Table 2: Mouse prostate pathological changes

Age (months)	<i>Uxt^{Flox/Y}</i>	<i>Uxt^{Flox/Y}, Cre</i>
4-6	0/7	6/8
12	1/5	6/6
Total	1/12	12/14