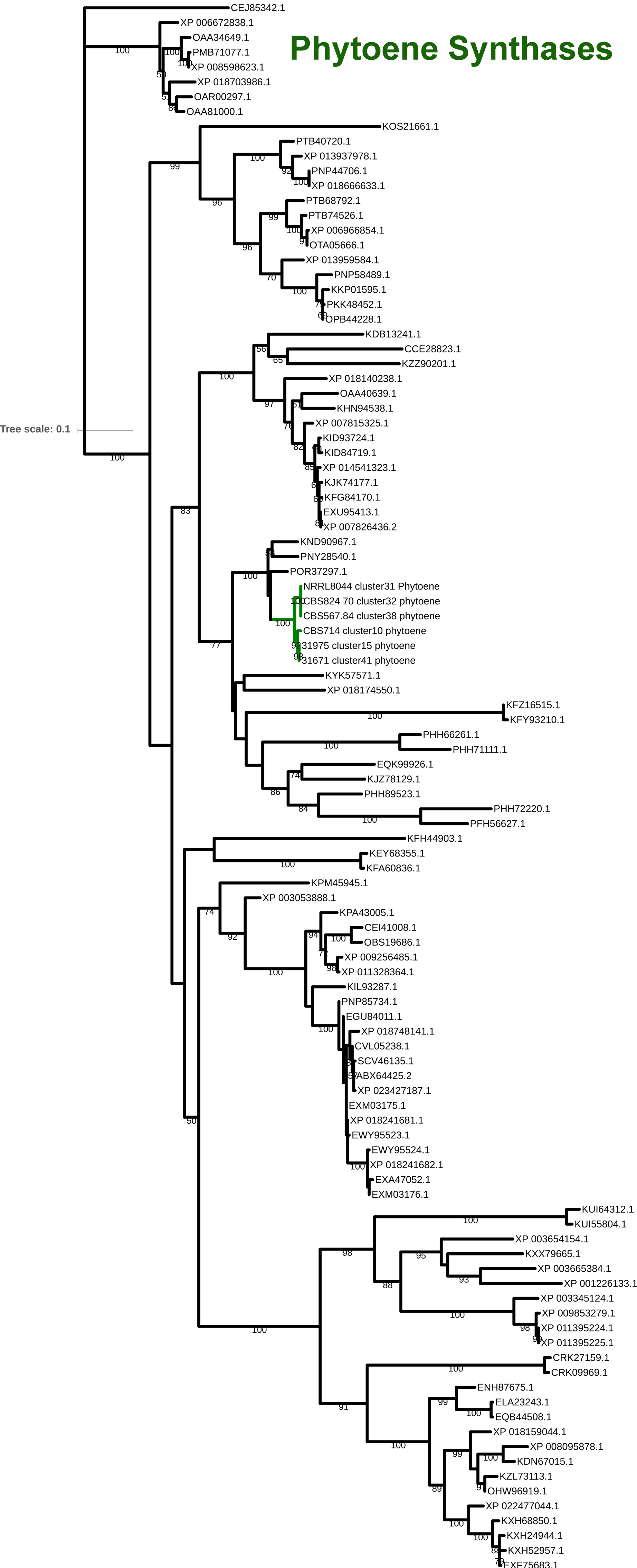
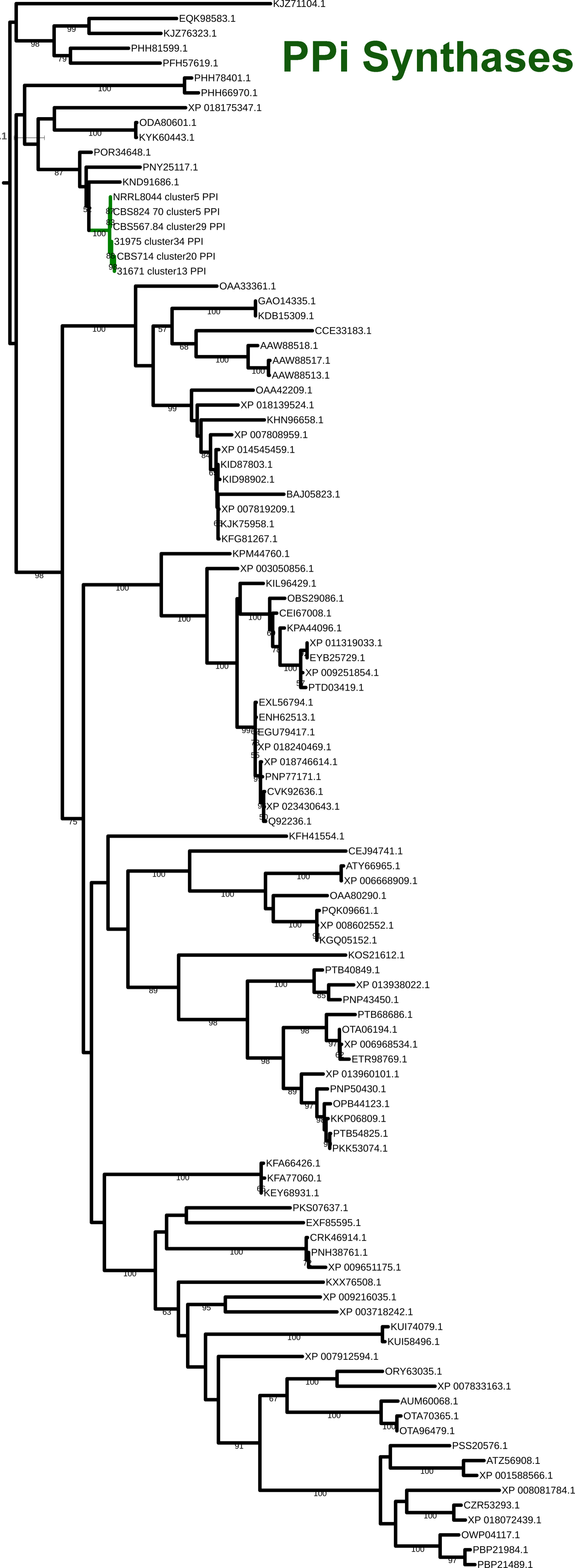


Figure 8. Phylogenetic trees of terpene biosynthetic genes. Distinct terpene synthase domains (phytoene synthase, PPI synthase, terpene cyclase, and terpene synthase) were extracted from core genes involved in terpene metabolism across the six *T. inflatum* strains. Each domain class was used in BLAST searched of the ncbi nr database (NCBI accession numbers shown) and the top 50 hits of fungal genes from each class were included. Phylogenetic analysis was performed using maximum likelihood in RAxML using the best-fit amino acid substitution model (WAG) model and an automatically optimized number of bootstrap replicates. *T. inflatum* genes are color coded green.



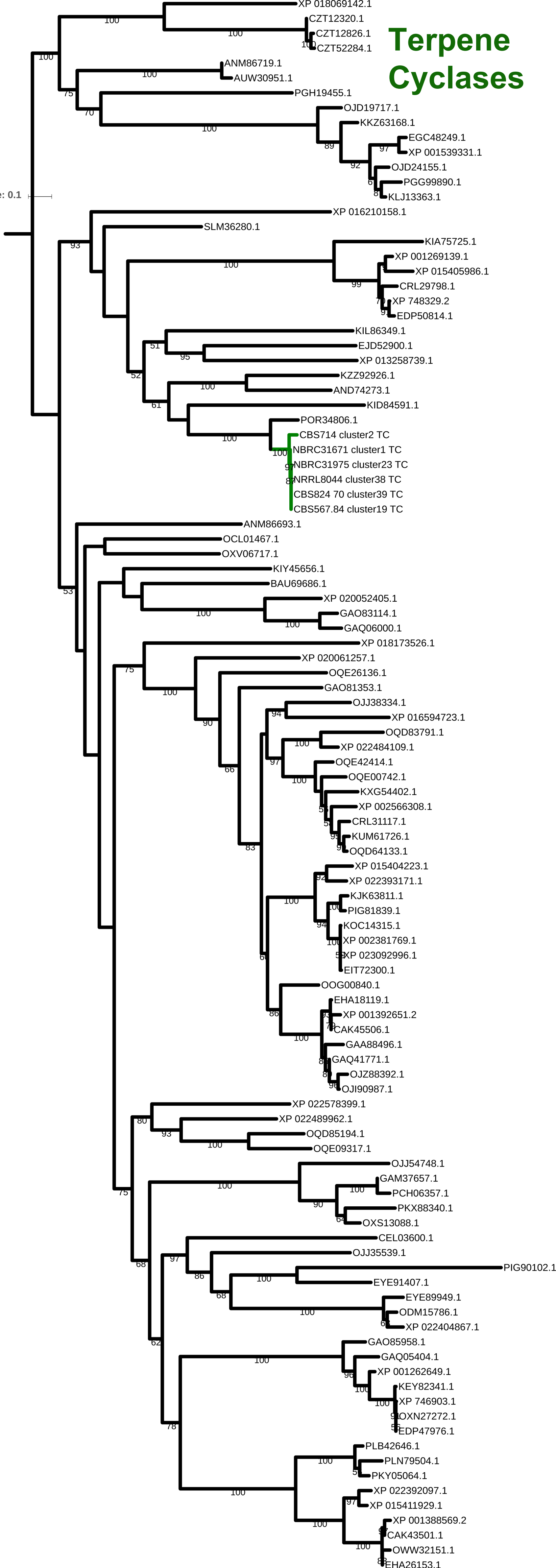
PPi Synthases

Tree scale: 0.1



Terpene Cyclases

Tree scale: 0.1



Tree scale: 0.1

Terpene Synthases

