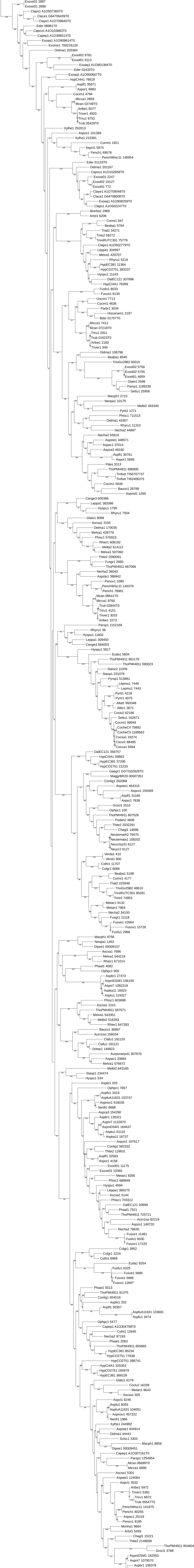
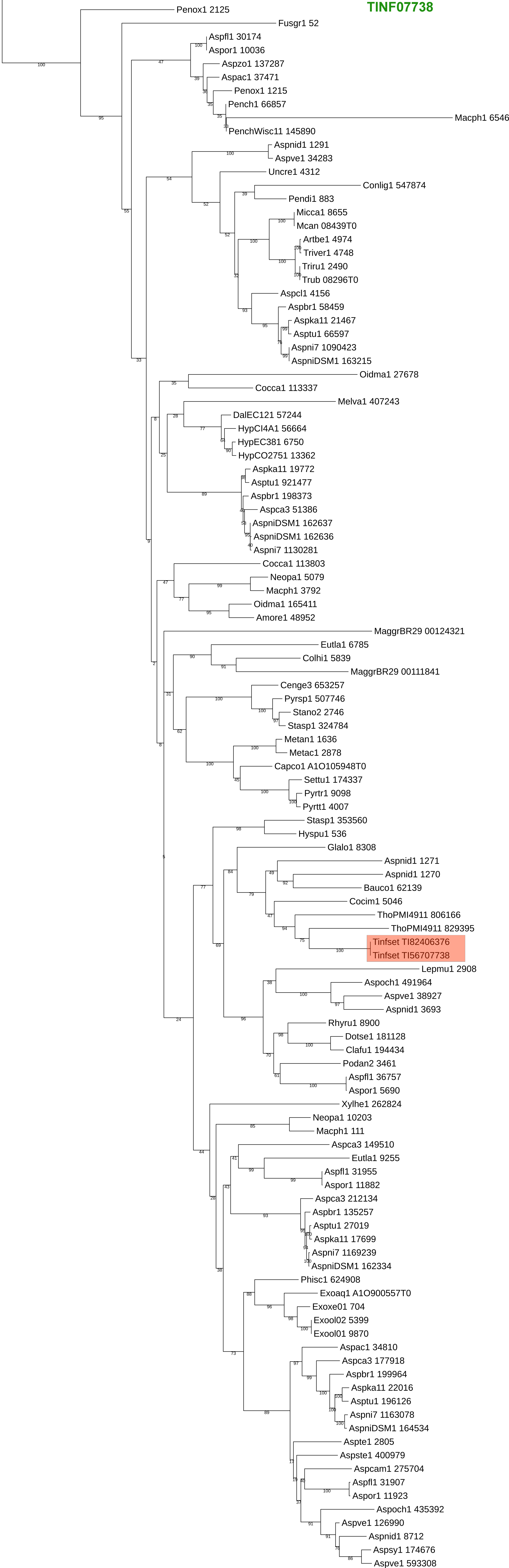


**Figure 12.** Phylogenies of genes from 340 fungal proteomes clustering with individual genes in the aflatoxin-like cluster (cluster D) in *T. inflatum* strain CBS567.84 and CBS824.70. Phylogenies were constructed using maximum likelihood criteria implemented in RAxML using the best fit model of amino acid substitution using Bayesian Information Criterion and 100 bootstrap replicates. The cluster genes in *T. inflatum* strains are highlighted in red and a key to abbreviations for other fungal taxa is included at the end of the supplement.

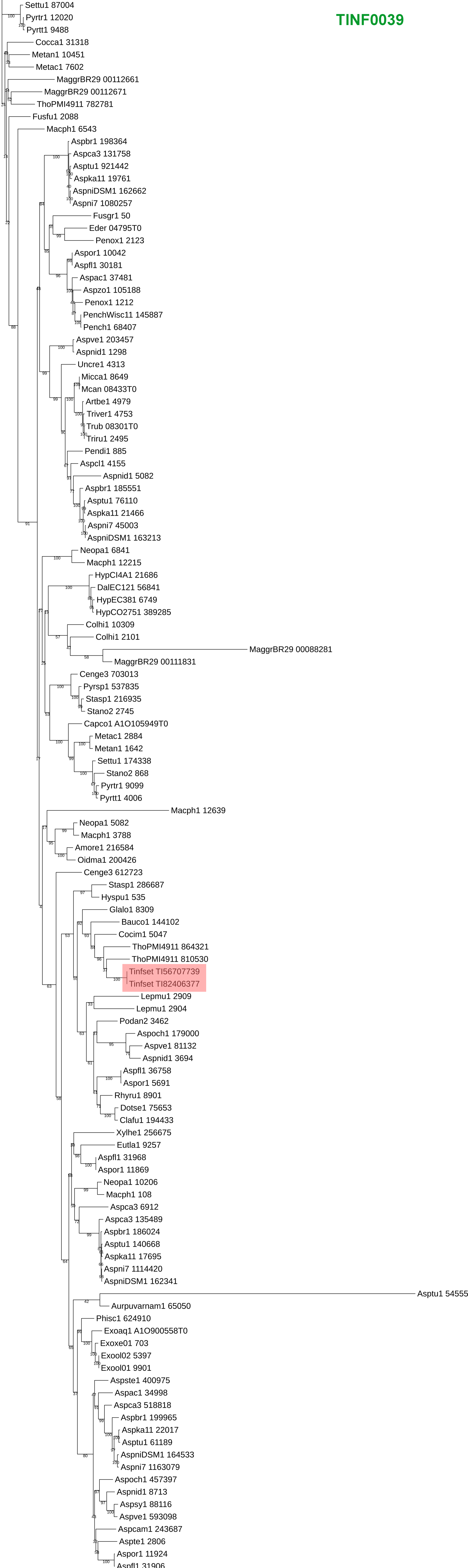


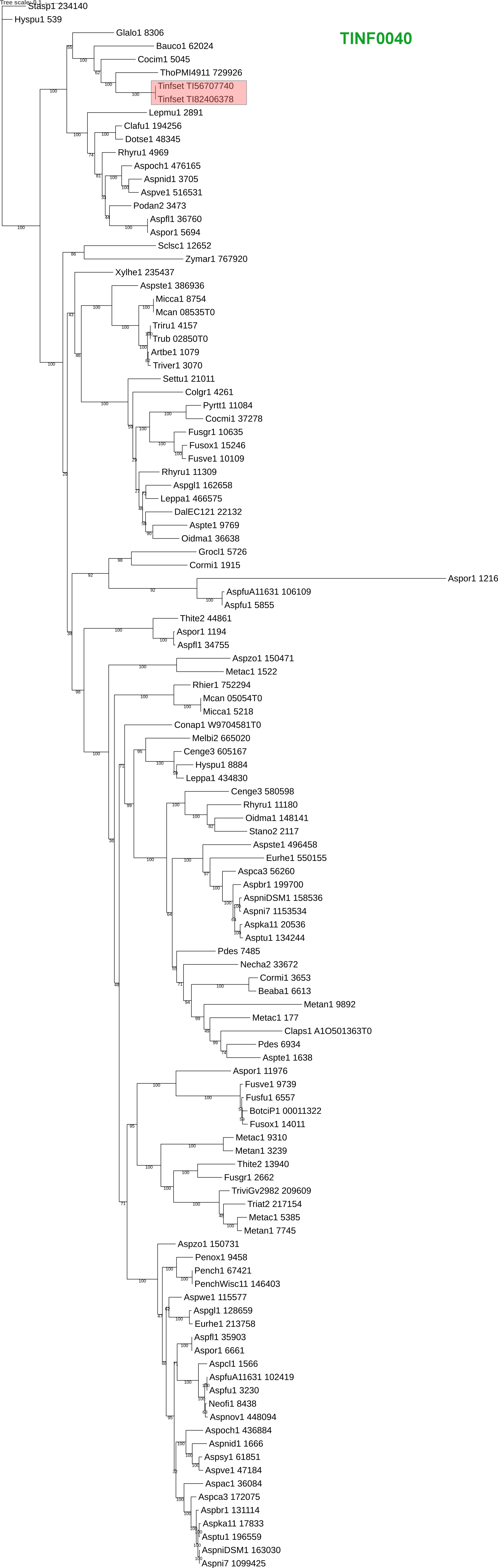
**TINF07738**

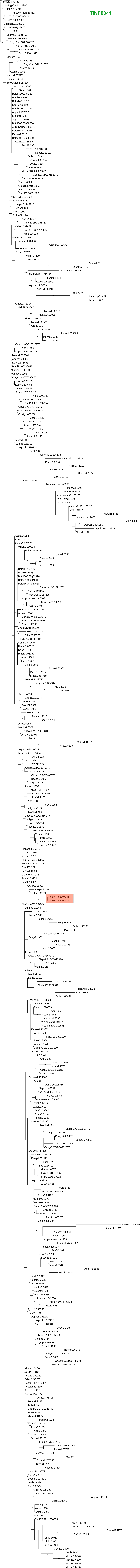


tree scale: 0.1  
HypCI4A1 19015

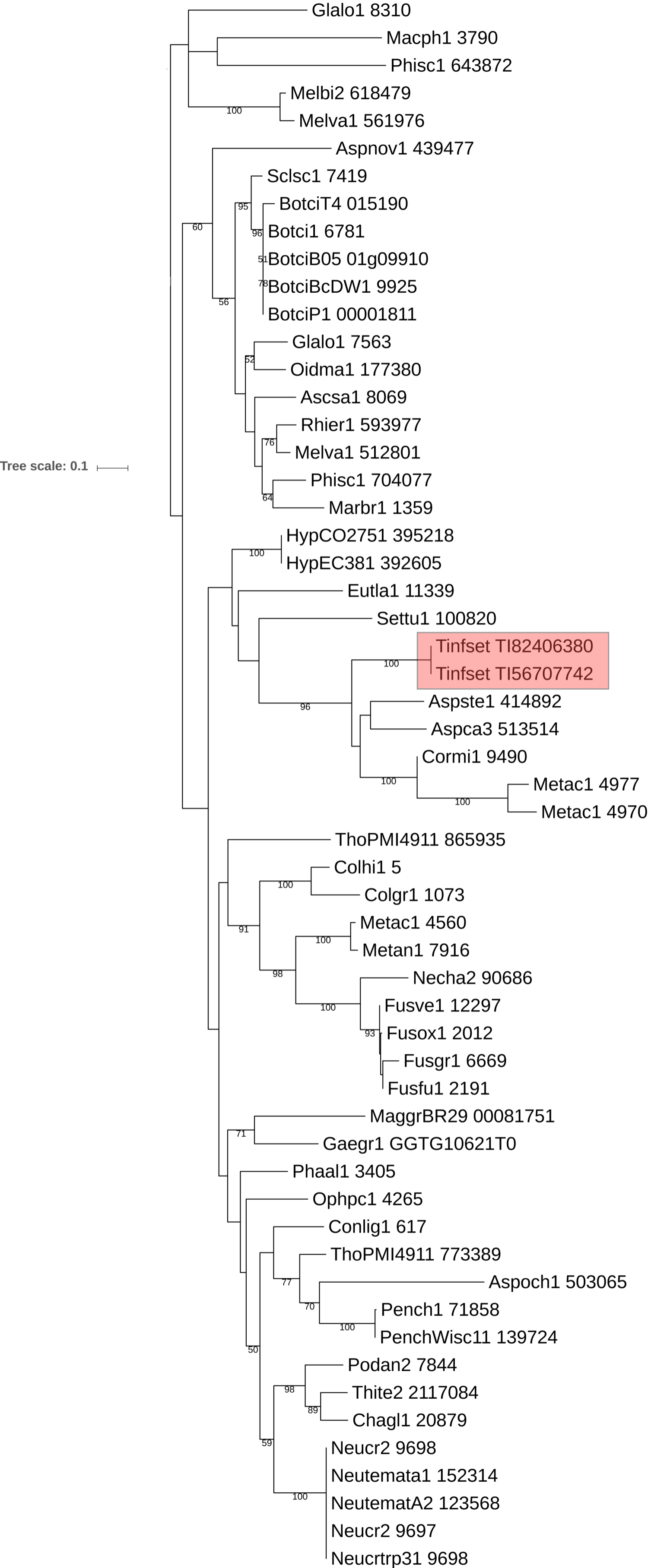
TINF0039

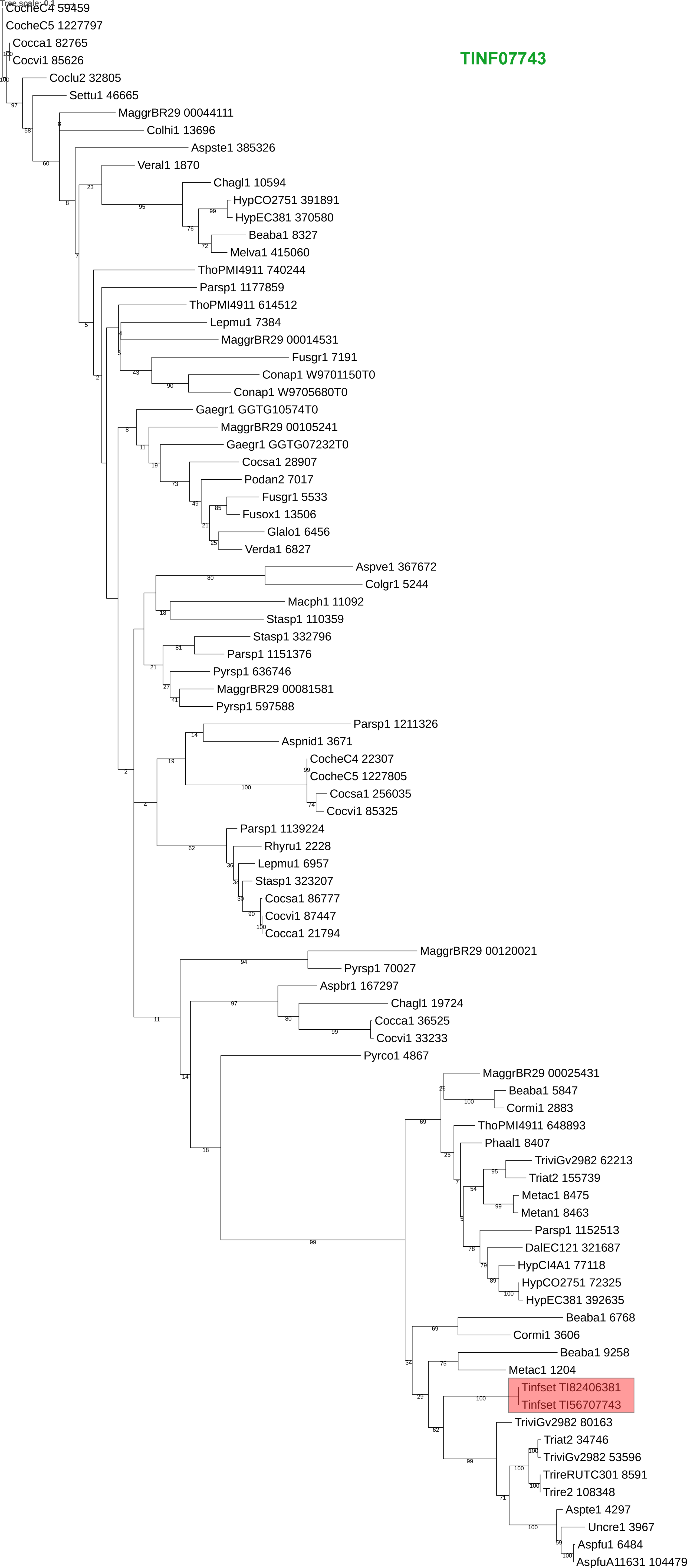






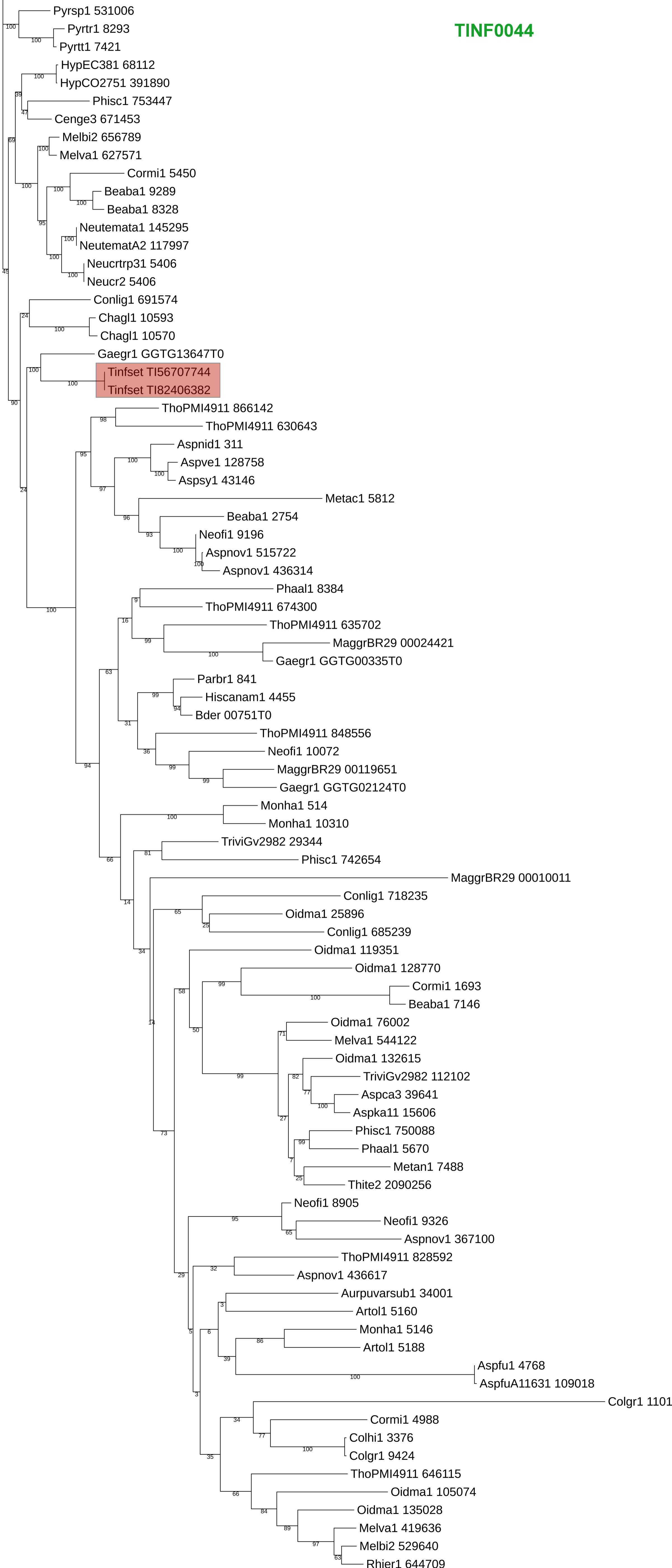
# TINF07742



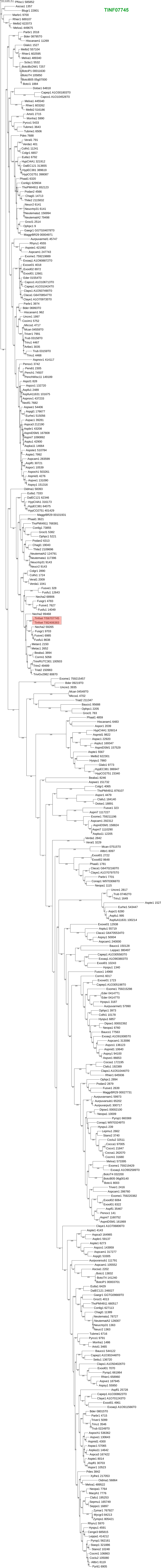


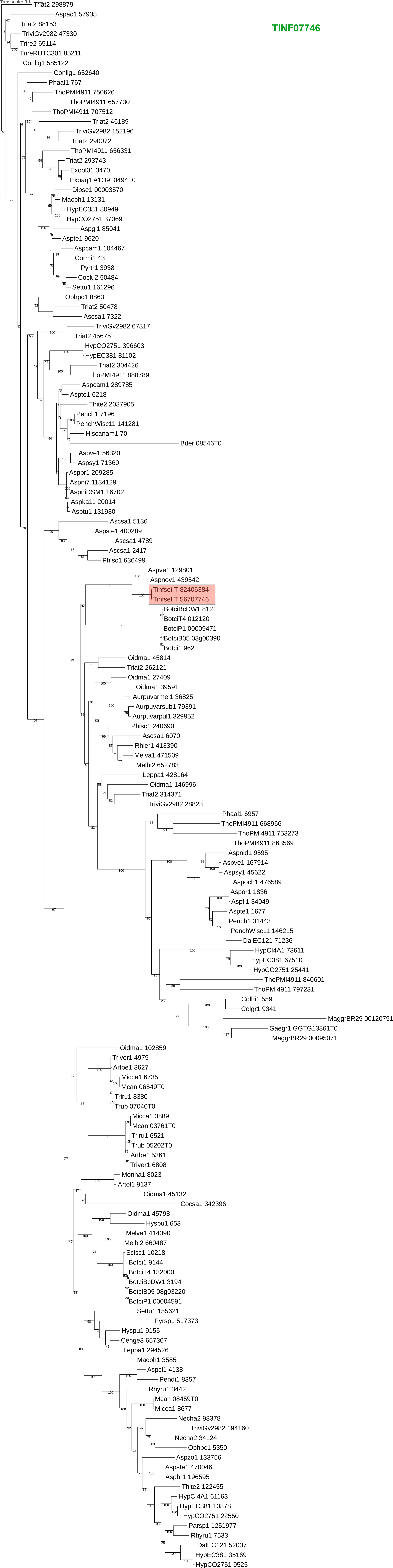
scale: 0.1

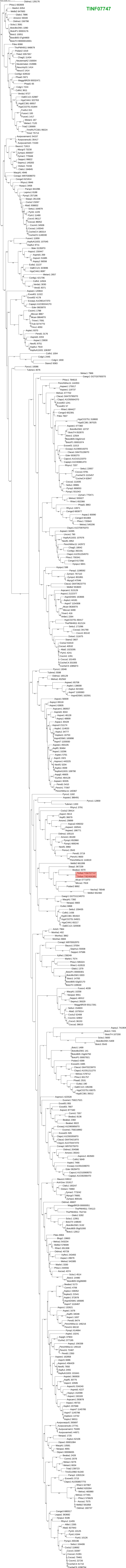
TINF0044

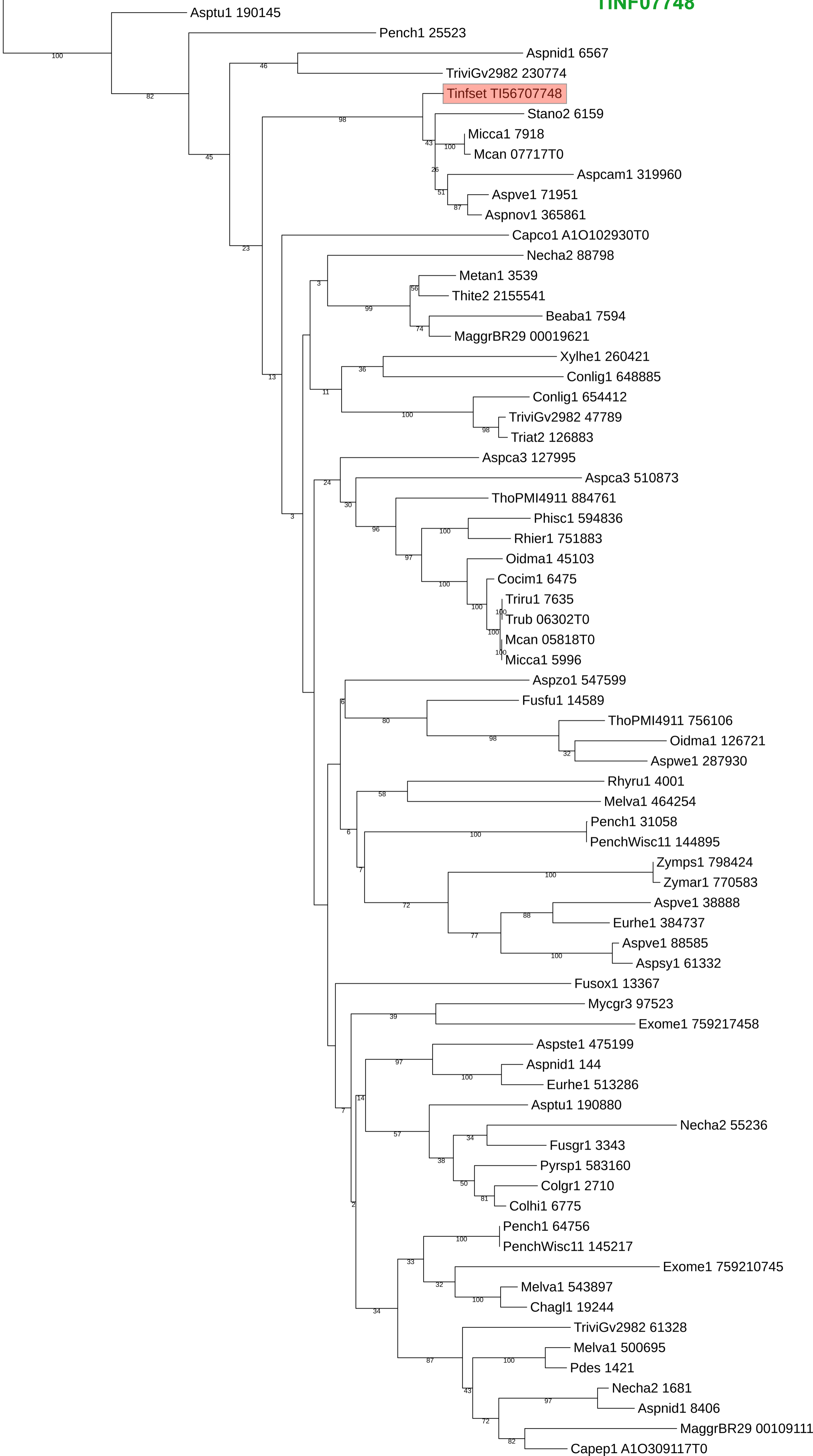




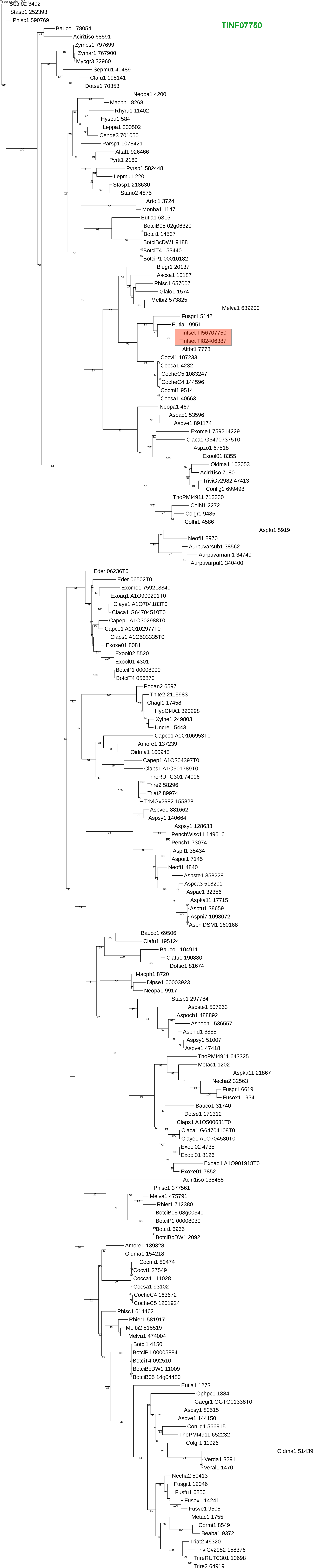


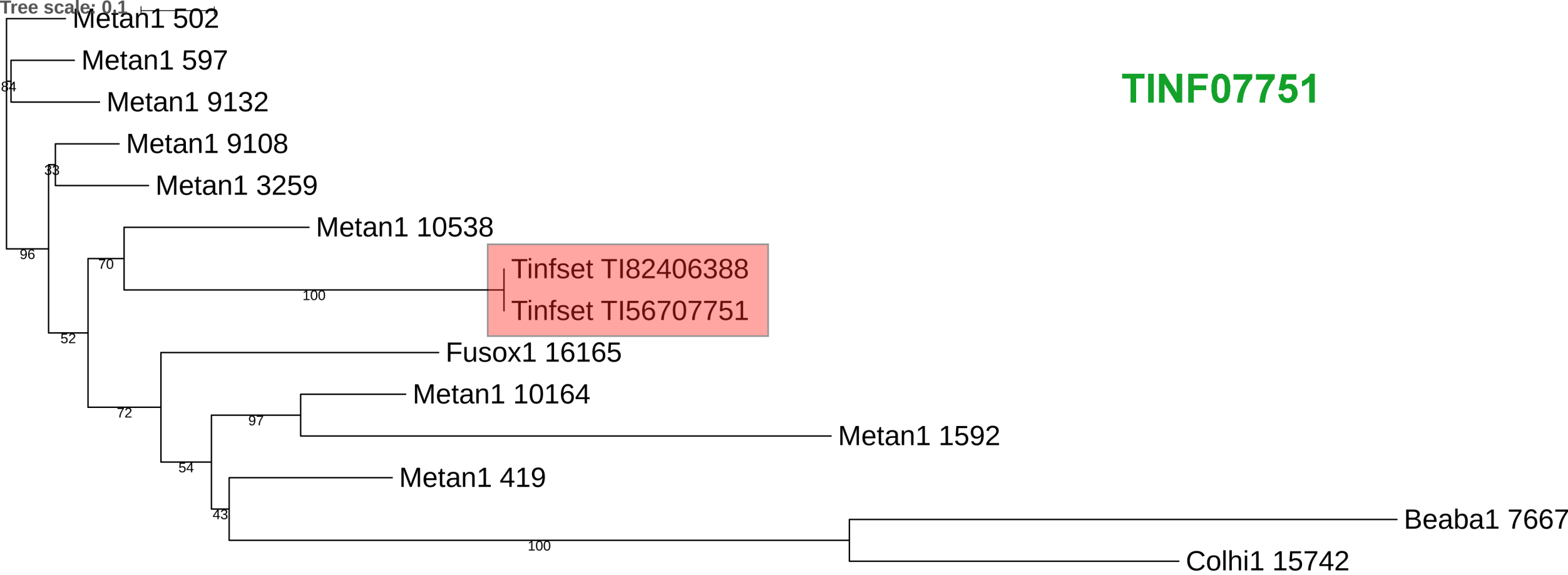


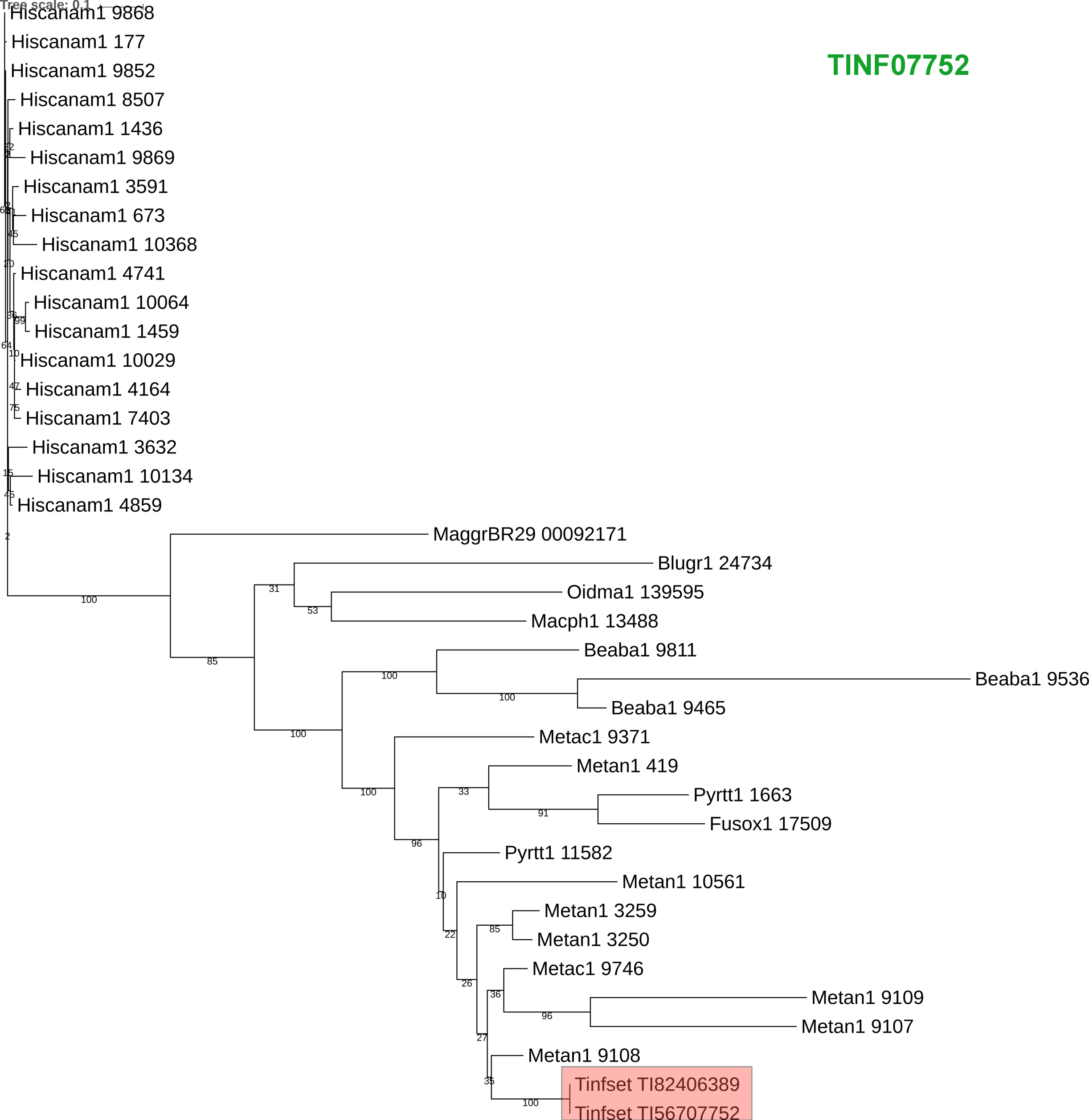






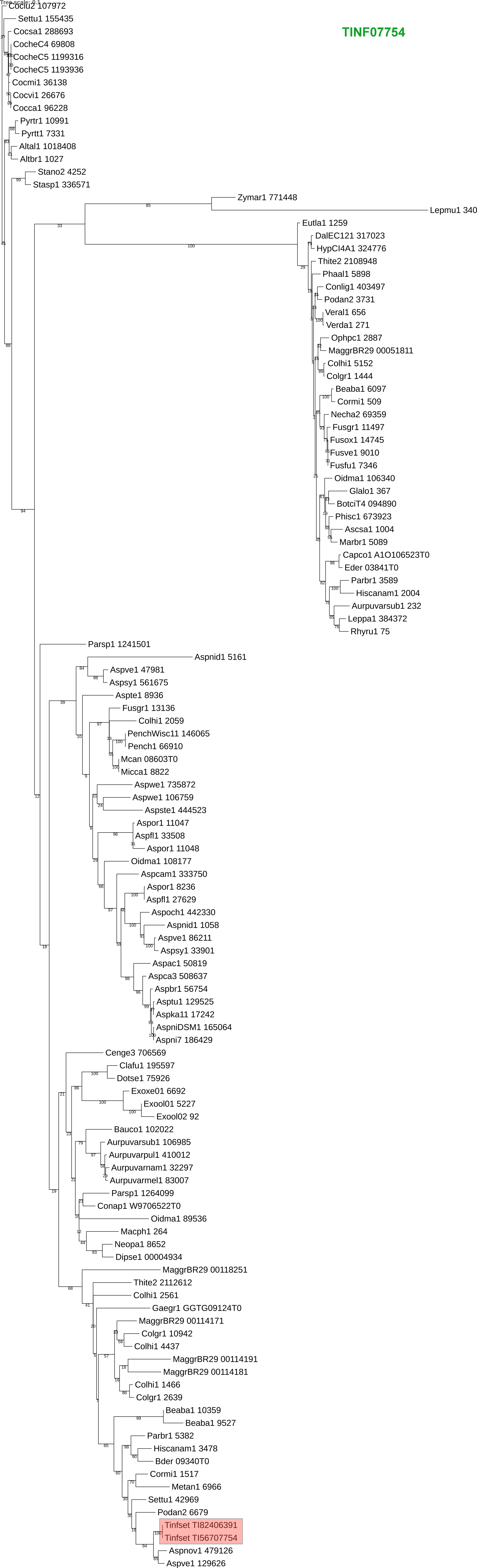


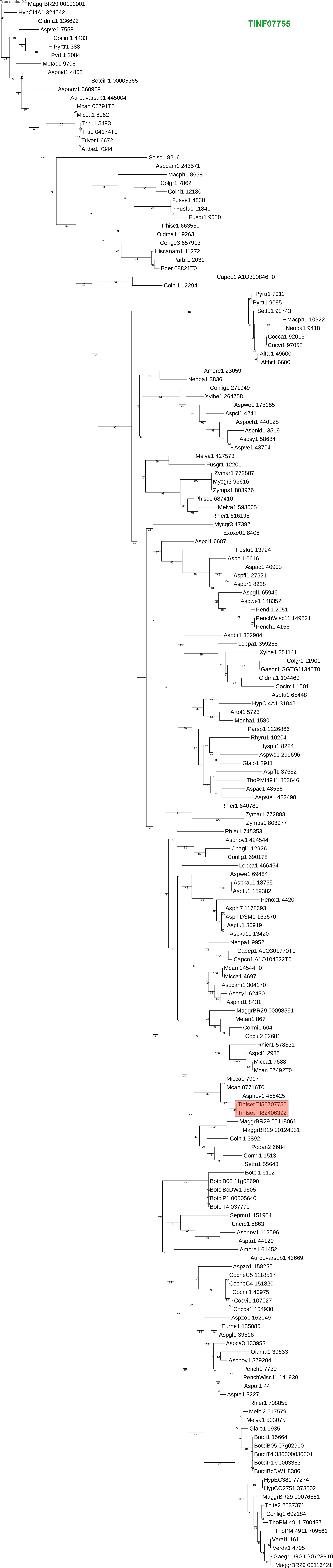


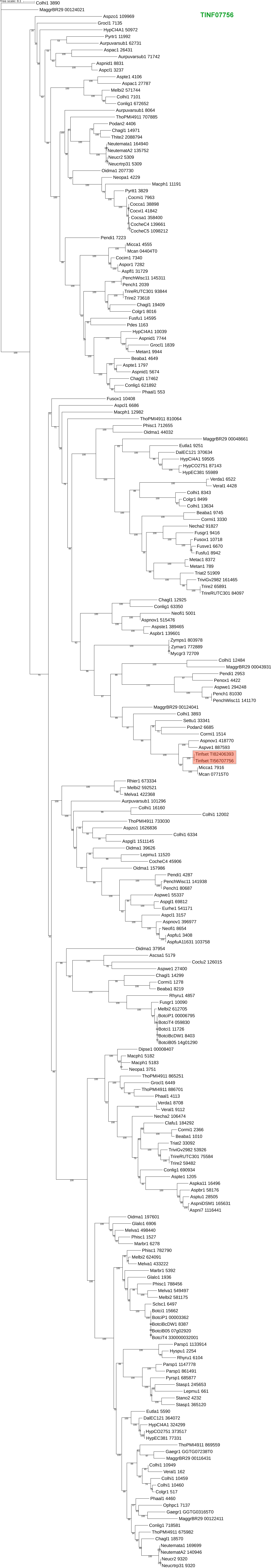






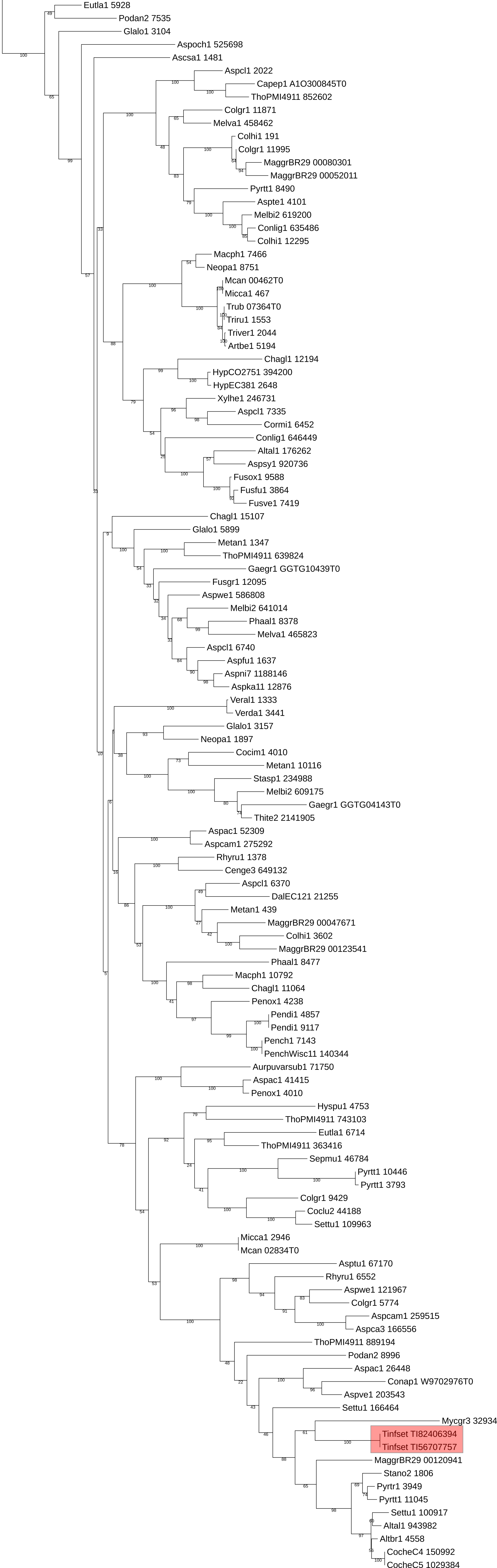






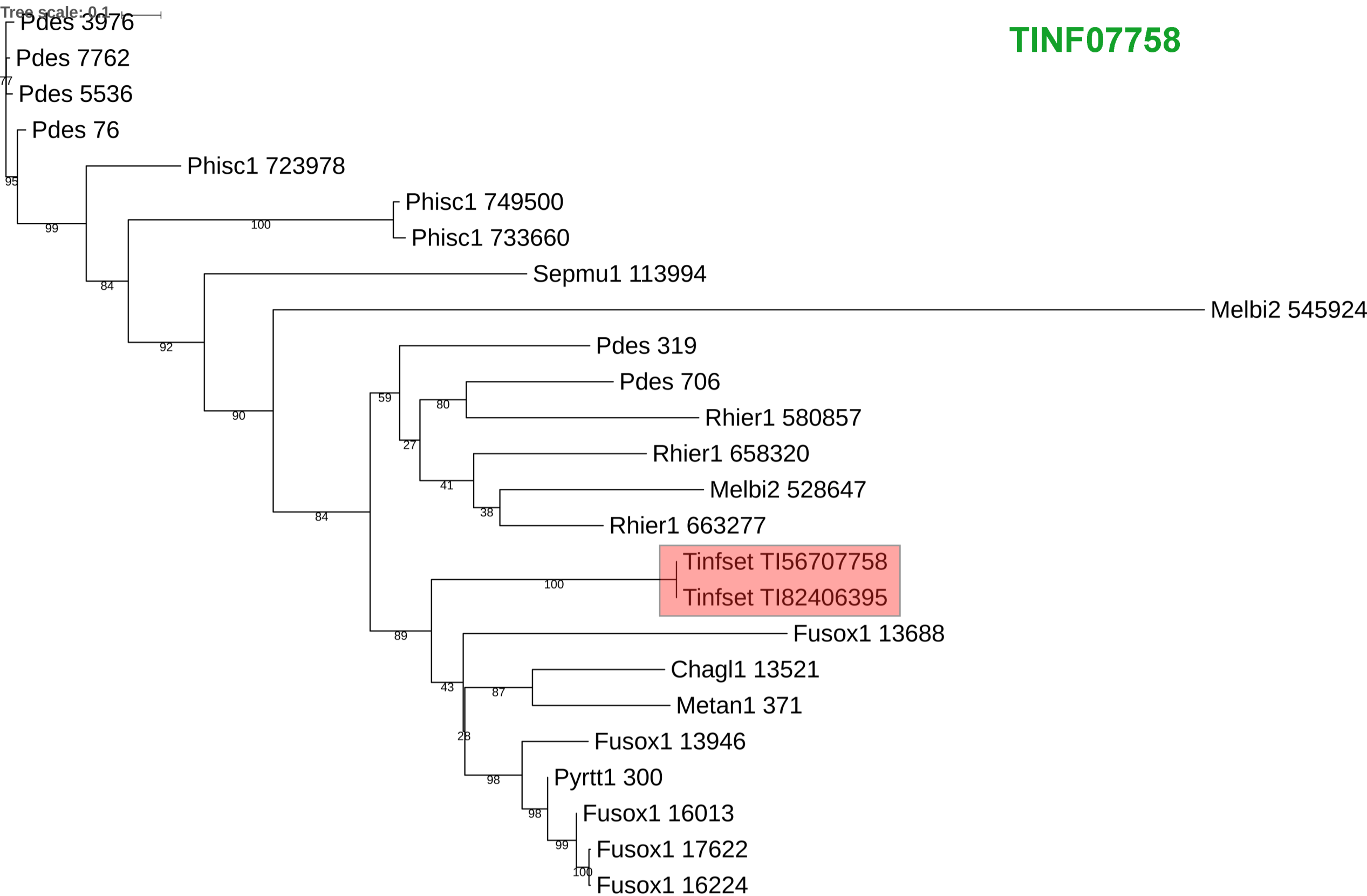
Aspbr1 178553  
AspniDSM1 161636  
Aspni7 1179776

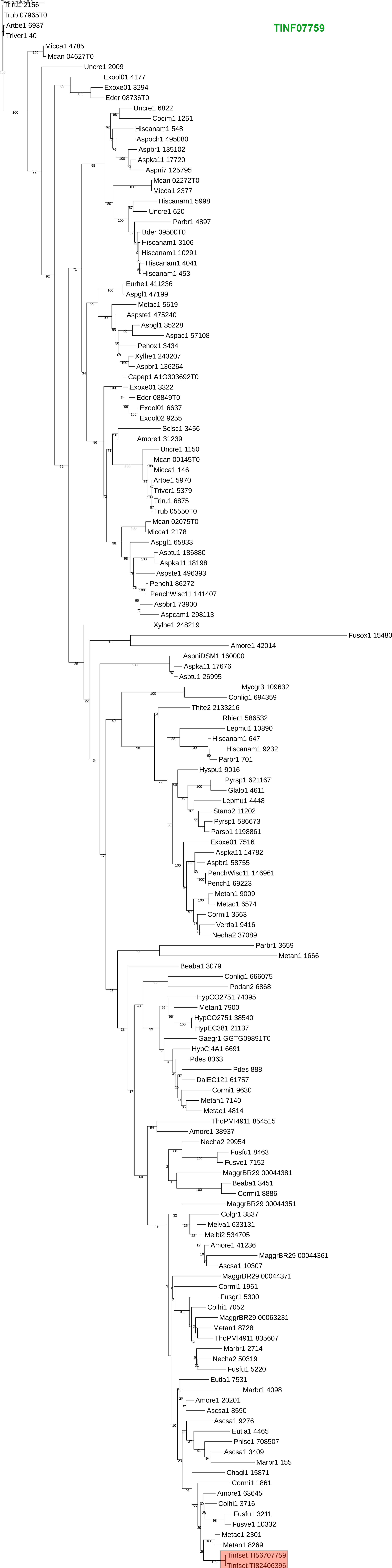
TINF07757



Tree scale: 0.1

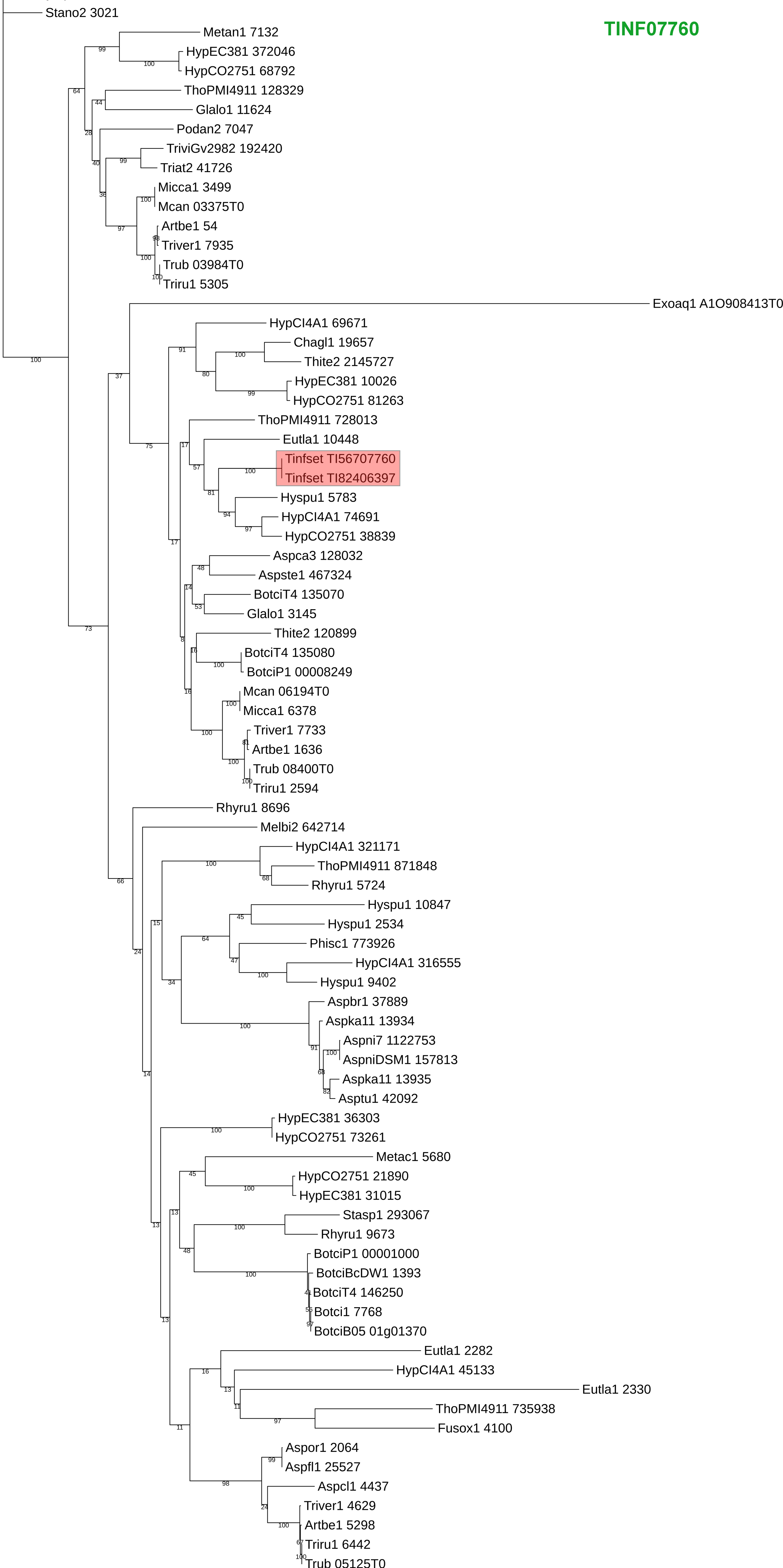
**TINF07758**





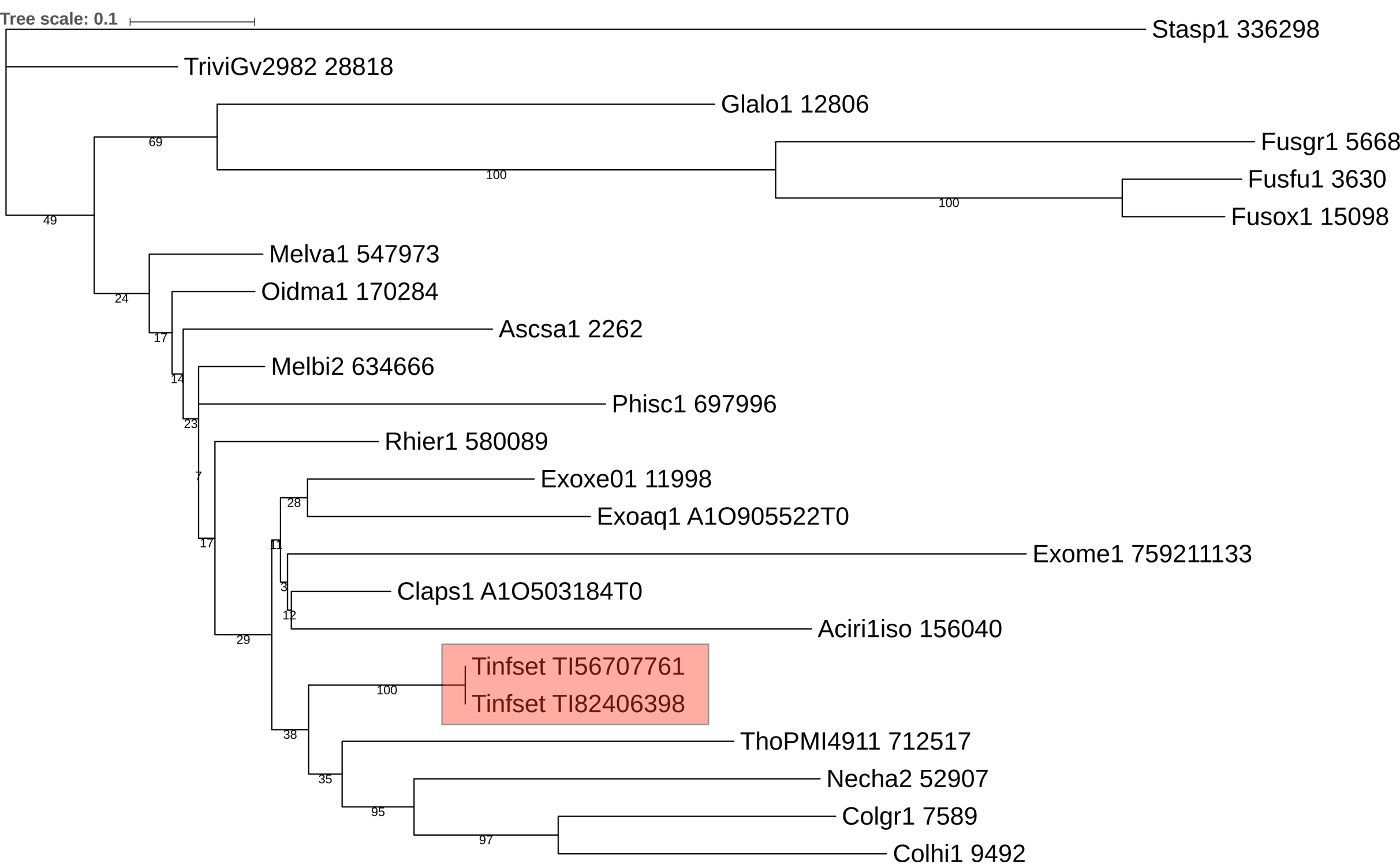
scale 0.1

TINF07760





# TINF07761



## Key to Fungal Taxa

<u>Abbreviation</u>	<u>Fungal species</u>
Aciri1iso	Acidomyces richmondensis BFW
Altal1	Alternaria alternata SRC1lrK2f
Altbr1	Alternaria brassicicola
Amore1	Amorphotheca resinae
Artbe1	Arthroderma benhamiae CBS 112371
Artol1	Arthrobotrys oligospora ATCC 24927
Ascsa1	Ascocoryne sarcoides NRRL50072
Aspac1	Aspergillus aculeatus ATCC16872
Aspbr1	Aspergillus brasiliensis
Aspca3	Aspergillus carbonarius
Aspcam1	Aspergillus campestris IBT 28561
Aspcl1	Aspergillus clavatus NRRL 1 from AspGD
Aspfl1	Aspergillus flavus NRRL3357
Aspfu1	Aspergillus fumigatus Af293 from AspGD
AspfuA11631	Aspergillus_fumigatus_A1163
Aspgl1	Aspergillus glaucus
Aspka11	Aspergillus kawachii IFO 4308
Aspni7	Aspergillus niger ATCC 1015
Aspnid1	Aspergillus nidulans from AspGD
AspniDSM1	Aspergillus niger CBS 513.88
Aspnov1	Aspergillus novofumigatus IBT 16806
Aspoch1	Aspergillus ochraceoroseus IBT 24754
Aspor1	Aspergillus oryzae RIB40
Aspste1	Aspergillus steynii IBT 23096
Aspsy1	Aspergillus sydowii
Aspte1	Aspergillus_terreus_NIH_2624
Asptu1	Aspergillus tubingensis
Aspve1	Aspergillus versicolor
Aspwe1	Aspergillus_wentii
Aspzo1	Aspergillus zonatus
Aurpuvarmel1	Aureobasidium pullulans var. melanogenum CBS 110374
Aurpuvarnam1	Aureobasidium pullulans var. namibiae CBS 147.97
Aurpuvarpul1	Aureobasidium pullulans var. pullulans EXF-150
Aurpuvarsub1	Aureobasidium pullulans var. subglaciale EXF-2481
Bauco1	Baudoinia compniacensis UAMH 10762

Bder	Blastomyces dermatitidis
Beaba1	Beauveria bassiana ARSEF 2860
Blugr1	Blumeria graminis f.sp. hordei DH14
Botci1	Botrytis_cinerea
BotciB05	Botrytis_cinerea
BotciBcDW1	Botrytis_cinerea
BotciP1	Botrytis_cinerea
BotciT4	Botrytis_cinerea
Capco1	Capronia coronata cbs 617.96
Capep1	Capronia epimyces cbs 606.96
Cenge3	Cenococcum geophilum 1.58
Chagl1	Chaetomium globosum v1.0
Claca1	Cladophialophora carrionii CBS 160.54
Clafu1	Cladosporium fulvum
Claps1	Cladophialophora psammophila CBS 110553
Claye1	Cladophialophora yegresii cbs 114405
Cocca1	Cochliobolus carbonum 26-R-13 v1.0
CocheC4	Cochliobolus heterostrophus C4
CocheC5	Cochliobolus heterostrophus C5
Cocim1	Coccidioides immitis RS
Coclu2	Cochliobolus lunatus m118
Cocmi1	Cochliobolus miyabeanus ATCC 44560
Cocsa1	Cochliobolus sativus ND90Pr
Cocvi1	Cochliobolus victoriae FI3
Colgr1	Colletotrichum graminicola M1.001
Colhi1	Colletotrichum higginsianum IMI 349063
Conap1	Coniosporium apollinis cbs 100218
Conlig1	Coniochaeta ligniaria NRRL 30616 v1.0
Cormi1	Cordyceps militaris CM01
DalEC121	Daldinia eschscholzii EC12
Dotse1	Dothistroma septosporum NZE10
Eder	Exophiala dermatitidis UT8656
Eurhe1	Eurotium rubrum
Eutla1	Eutypa lata UCREL1
Exoaq1	Exophiala aquamarina cbs 119918
Exome1	Exophiala mesophila CBS40295
Exool01	Exophiala oligosperma CBS72588
Exool02	Exophiala oligosperma CBS 72.588
Exoxe01	Exophiala xenobiotica
Fusfu1	Fusarium fujikuroi IMI 58289
Fusgr1	Fusarium graminearum

Fusox1	<i>Fusarium oxysporum</i> f. sp. <i>lycopersici</i> strain 4287
Fusve1	<i>Fusarium verticillioides</i> 7600
Gaegr1	<i>Gaeumannomyces graminis</i> var. <i>tritici</i> R3-111a-1
Glalo1	<i>Glarea lozoyensis</i> ATCC 20868
Grocl1	<i>Grosmannia clavigera</i> _kw1407
Hiscanam1	<i>Histoplasma capsulatum</i> nam1
HypCI4A1	<i>Hypoxyton</i> sp. CI-4A
HypCO2751	<i>Hypoxyton</i> sp. CO27-5 v1.0
HypEC381	<i>Hypoxyton</i> sp. EC38 v3.0
Hyspu1	<i>Hysterium pulicare</i>
Lepmu1	<i>Leptosphaeria maculans</i>
Leppa1	<i>Lepidopterella palustris</i>
Macph1	<i>Macrophomina phaseolina</i> MS6
MaggrBR29	<i>Magnaporthe grisea</i> BR29
Marbr1	<i>Marssonina brunnea</i> f. sp. <i>multigermtubi</i> MB m1
Mcan	<i>Microsporium canis</i> CBS113480
Melbi2	<i>Meliniomyces bicolor</i> E
Melva1	<i>Meliniomyces variabilis</i> F
Metac1	<i>Metarhizium acridum</i> CQMa 102
Metan1	<i>Metarhizium robertsii</i> ARSEF 23
Micca1	<i>Microsporium canis</i> CBS 113480
Monha1	<i>Monacrosporium haptotylum</i> CBS 200.50
Mycgr3	<i>Mycosphaerella graminicola</i>
Necha2	<i>Nectria haematococca</i>
Neofi1	<i>Neosartorya fischeri</i> NRRL 181
Neopa1	<i>Neofusicoccum parvum</i> UCRNP2
Neucr2	<i>Neurospora crassa</i> OR74A v2.0
Neucrtrp31	<i>Neurospora crassa</i> FGSC 73 trp-3 v1.0
Neutemata1	<i>Neurospora tetrasperma</i> FGSC 2509 mat a v1.0
Neutemata2	<i>Neurospora tetrasperma</i> FGSC 2508 mat A v2.0
Oidma1	<i>Oidiodendron maius</i> Zn
Ophpc1	<i>Ophiostoma piceae</i> UAMH 11346
Parbr1	<i>Paracoccidioides brasiliensis</i> _Pb03
Parsp1	<i>Paraconiothyrium sporulosum</i> AP3s5-JAC2a
Pdes	<i>Pseudogymnoascus destructans</i> 20631-21
Pench1	<i>Penicillium chrysogenum</i> v1.0
PenchWisc11	<i>Penicillium chrysogenum</i> Wisconsin 54-1255
Pendi1	<i>Penicillium digitatum</i> PHI26
Penox1	<i>Penicillium oxalicum</i> 114-2
Phaal1	<i>Phaeoacremonium aleophilum</i> UCRPA7
Phieu1	<i>Phialophora europaea</i> cbs 101466

Phisc1	Phialocephala scopiformis 5WS22E1
Podan2	Podospora anserina S mat+
Pyrco1	Pyronema confluens CBS100304
Pyrsp1	Pyrenochaeta sp. DS3sAY3a
Pyrtr1	Pyrenophora tritici-repentis
Pyrtt1	Pyrenophora teres f. teres
Rhier1	Rhizoscyphus ericae UAMH 7357
Rhyru1	Rhytidhysterium rufulum
Sclsc1	Sclerotinia_sclerotiorum
Sepmu1	Septoria musiva SO2202
Settu1	Setosphaeria turcica Et28A
Stano2	Stagonospora nodorum SN15
Stasp1	Stagonospora sp. SRC1lsM3a
Thite2	Thielavia terrestris v2.0
ThoPMI4911	Thozetella sp. PMI 491
Tinfset	Tolyocladium inflatum multiple
Triat2	Trichoderma_atroviride
Trire2	Trichoderma reesei
TrireRUTC301	Trichoderma reesei RUT C-30
Triru1	Trichophyton_rubrum_CBS_118892
Triver1	Trichophyton verrucosum HKI 0517
TriviGv2982	Trichoderma virens Gv29-8
Trub	Trichophyton rubrum CBS118892
Tubme1	Tuber melanosporum from Genoscope
Uncre1	Uncinocarpus reesii 1704
Xylhe1	Xylona heveae TC161
Zymar1	Zymoseptoria ardabiliae STIR04 1.1.1
Zymps1	Zymoseptoria pseudotritici STIR04 2.2.1