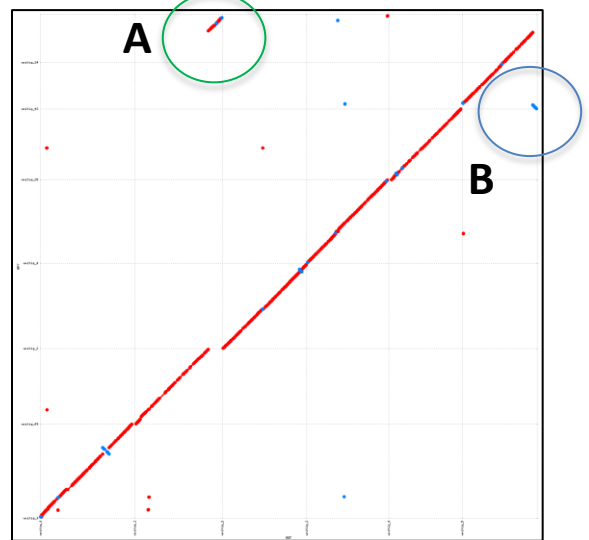
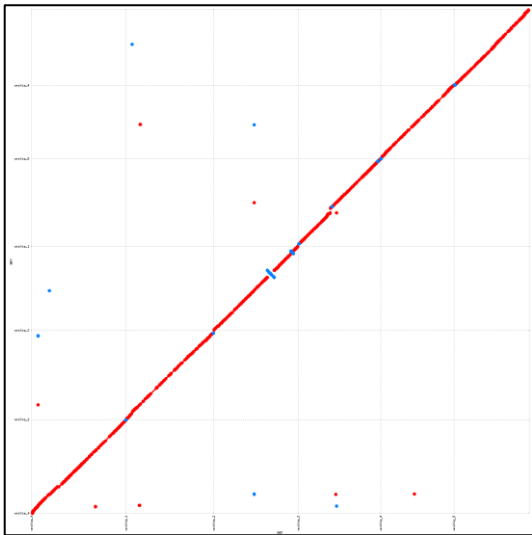


Figure S3 MUMmer plots of each *T. inflatum* strain (x-axis) against CBS714.70 (y-axis). High levels of synteny were observed for nearly all strains with the exception of NRRL8044 (right), which showed evidence of a large 800 Kb translocation (A; green circle) from chromosome 2 to chromosome 6 and a smaller 200 Kb translocation and inversion (B; blue circle) from one end of chromosome 6 to the other end.

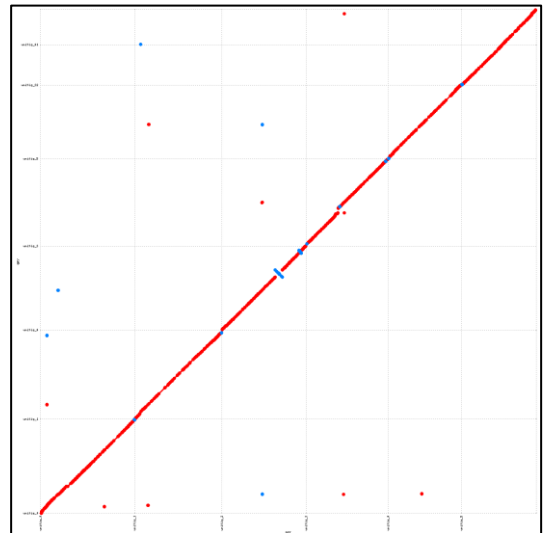
NRRL8044



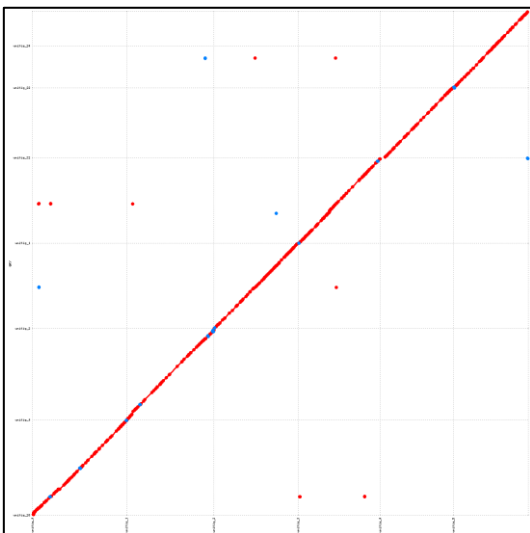
CBS567.84



CBS824.70



NBRC31671



NBRC31975

