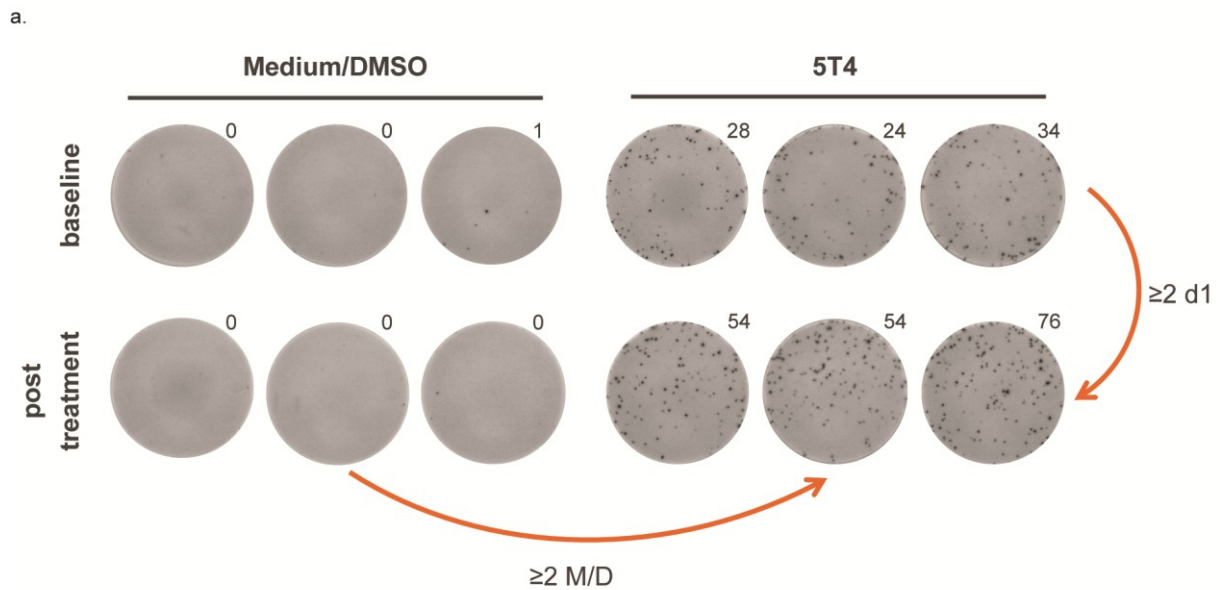
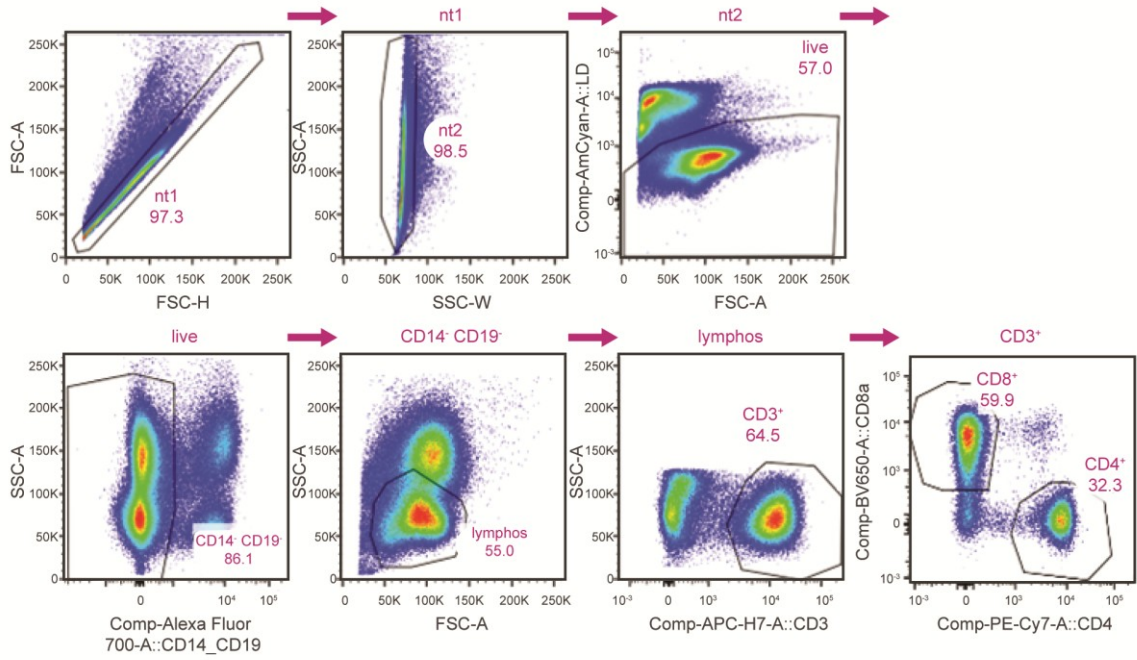


**Figure S1. Evaluation of cellular immunity in patients receiving BI1361849 immunotherapy combined with local radiation treatment: representative examples.**

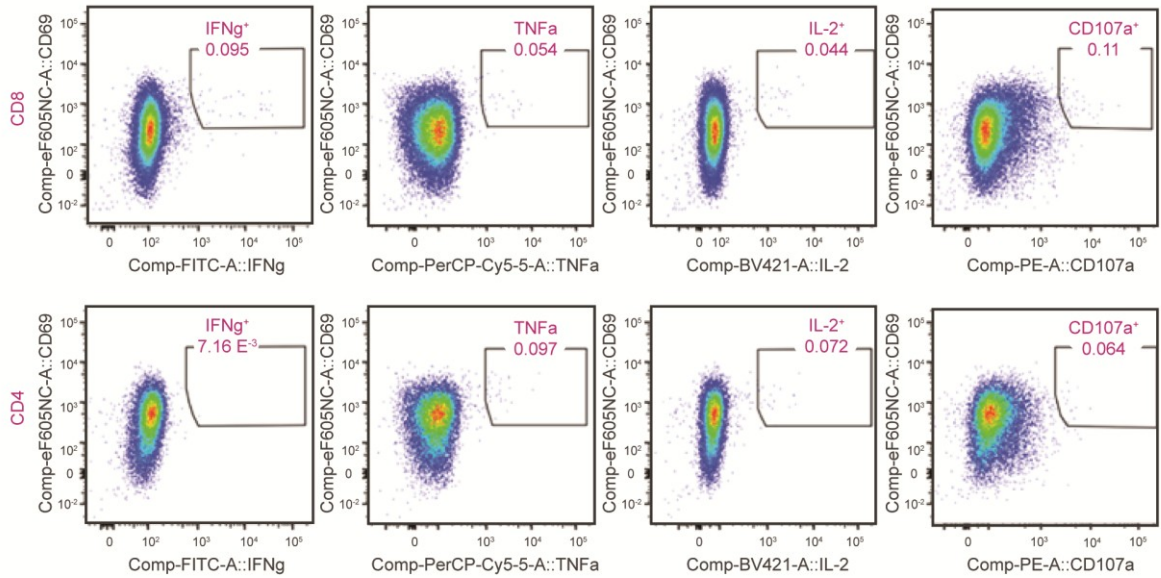
(a) Representative example of a positive ex vivo IFN- $\gamma$  ELISpot assay in a cellular immune responder. Numbers above the images show the number of IFN- $\gamma$  producing cells per  $3 \times 10^5$  cells. (b) Representative example of the gating strategy used in ex vivo ICS determination of antigen-specific cytokine production. (c) Representative example of changes in antigen-specific CD8<sup>+</sup> T cells post-vaccine, as determined ex vivo via ICS for NY-ESO-1 specific T cells, with the numbers of IFN- $\gamma$ , TNF- $\alpha$ , IL-2, or CD107a-positive cells shown in the boxes.



b.



Functional gates:



C.

CD69<sup>+</sup> in CD8<sup>+</sup> T cell population

