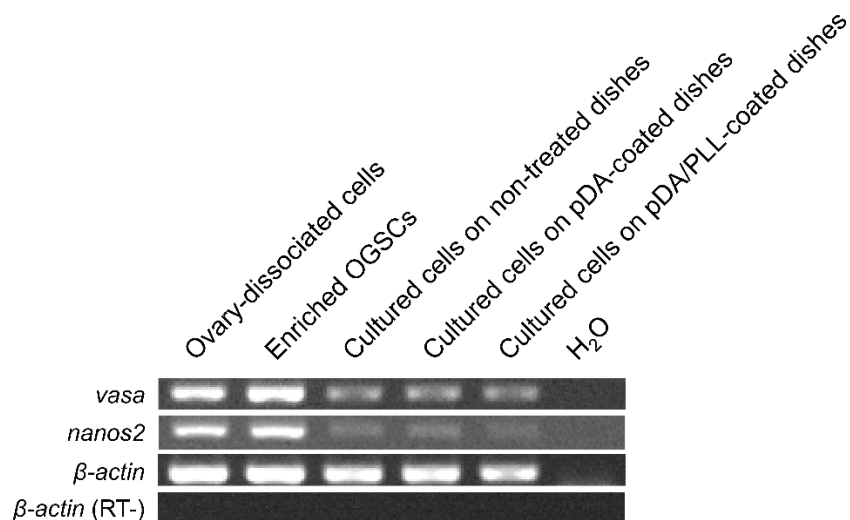


Supplementary Material

## Enhanced Adhesion of Fish Ovarian Germline Stem Cells on Solid Surfaces by Mussel-Inspired Polymer Coating

Yeonwoo Jeong, Jun Hyung Ryu, Yoon Kwon Nam, Seung Pyo Gong\*, and Sung Min Kang\*



**Figure S1.** Expression of *vasa* and *nanos2* genes in the enriched ovarian germline stem cells (OGSCs) cultured on different surface conditions. The enriched OGSCs cultured on different surface conditions were collected and were subjected to RT-PCR. Ovary-dissociated cells and enriched OGSCs were used for the positive controls. Weak expression of both genes were detected in all treatment groups after culture.