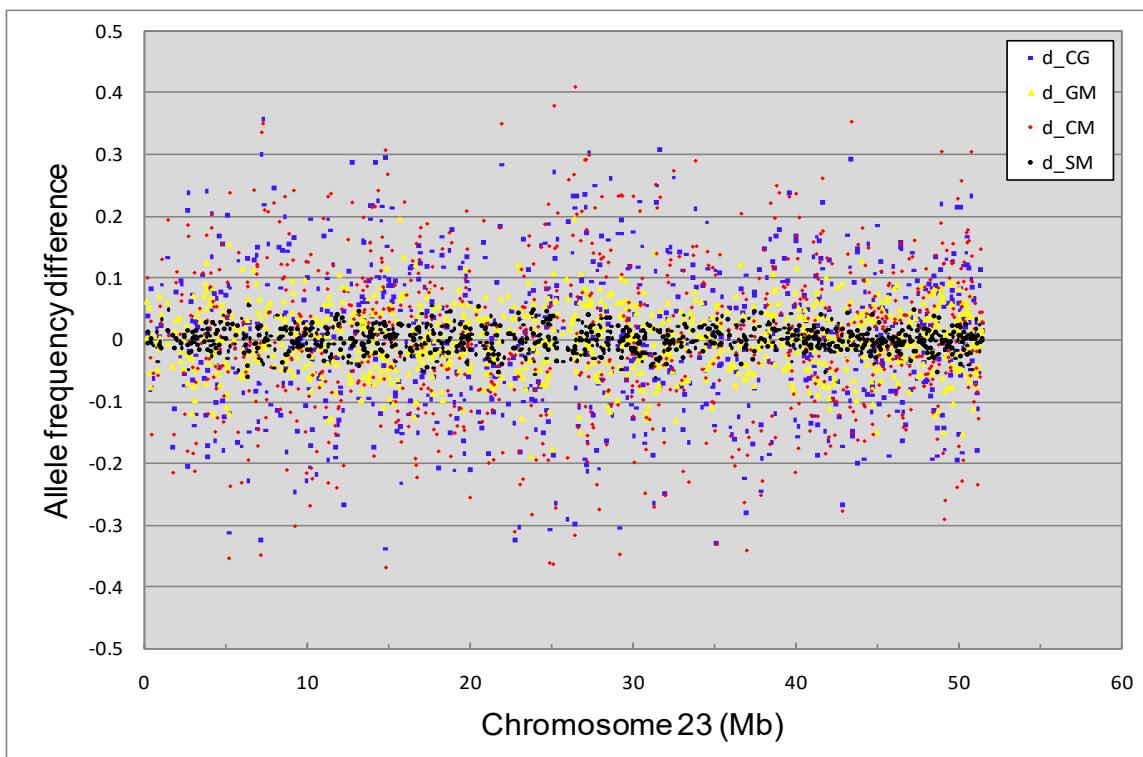
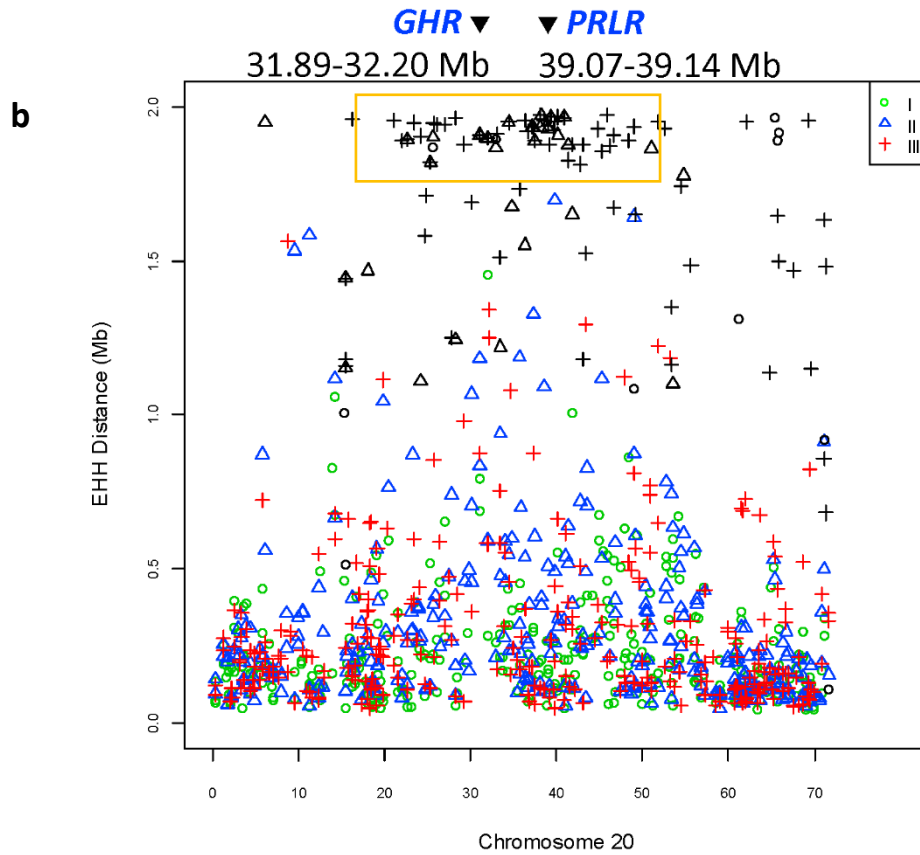


a





Additional file 3: Fig S3. Overview of allele frequency differences (AFD) and extended haplotype homozygosity (EHH). **a.** The Chr23 example of single-SNP AFD between selected and unselected Holsteins, showing that genetic selection resulted in genome-wide allele frequency changes but single-SNP AFD lacked interpretable patterns. Other chromosomes had similar single-SNP AFD patterns. **b.** Chr20 had the strongest EHH evidence of selection signature spanning center region 21-49 Mb. Most of the long-distance EHH values were concentrated in the *GHR-PRLR* region. The EHH distances were distances of haplotypes with minimal EHH of 0.6.