

742 Supplemental Figures

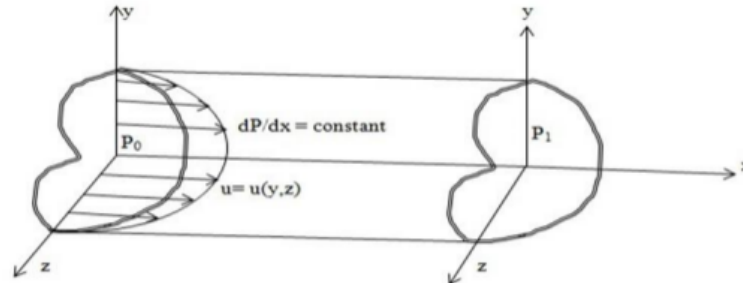


Figure S1. Fully developed flow through the lumen.

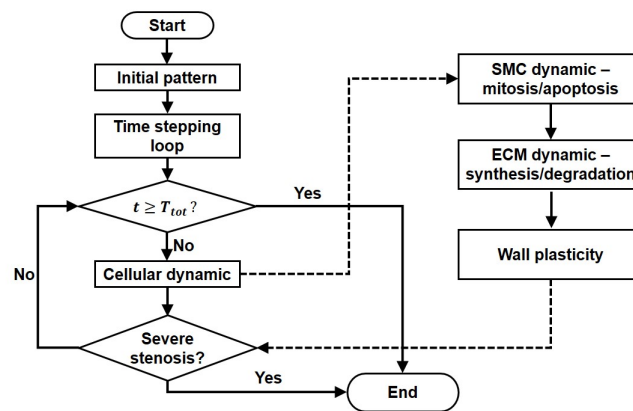


Figure S2. ABM Algorithm: an initial pattern is created by assigning to each site of the ABM either an SMC or an ECM, also combined with its corresponding internal clock time. Next, each site undergoes either mitosis or apoptosis according to the axiomatic rules described in Table 2 to then get re-distributed via tissue remodeling algorithm (Wall Plasticity) described in this paper in Section 2.3 [21].