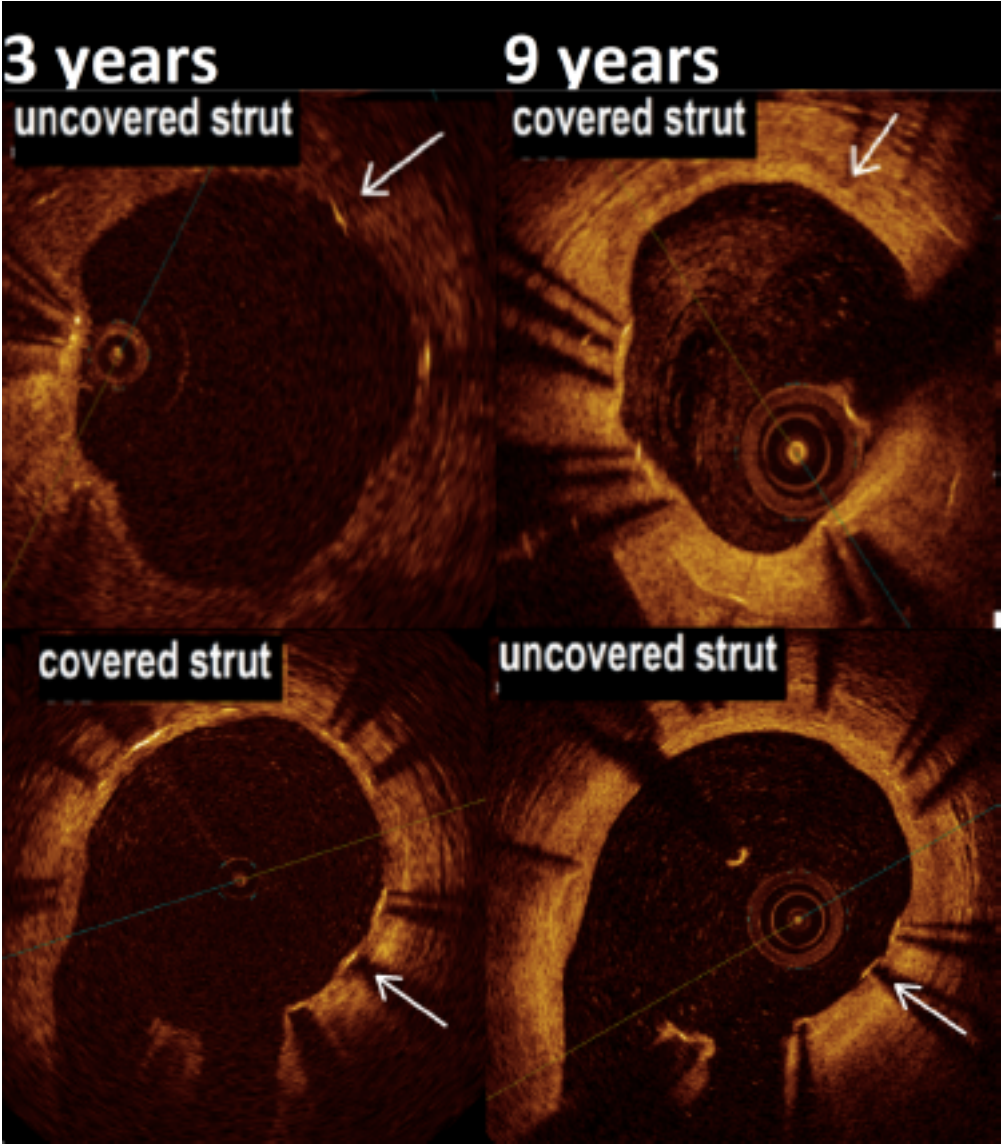


Suppl. Fig. 2 Optical coherence tomography (OCT) documentation of strut coverage change patterns in a paired strut-to-strut analysis between 3 and 9 years.



* The potential neointimal redistribution of neointima in the long – term leading to late uncoverage of some struts has to be viewed at in light of the threshold of optical coherence tomography (OCT) resolution.
SES- sirolimus-eluting stent, PES – paclitaxel-eluting stent