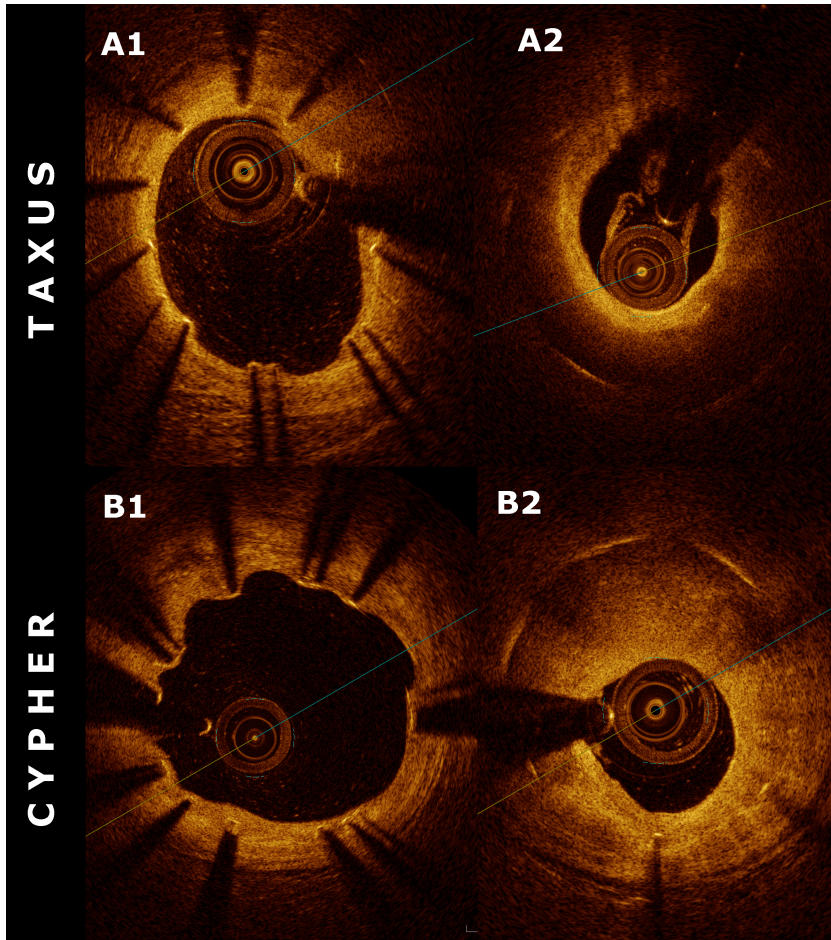


**Suppl. Fig 3. Spectrum of neointimal phenotypes at nine years follow up after implantation of SES (A) and PES (B) stents. Panels (A1, B1) show minimal coverage of stent struts with newly created neointimal tissue. Panels (A2, B2) show frames with maximal neointimal thickness.**



SES- sirolimus-eluting stent, PES – paclitaxel-eluting stent