

**OMTM, Volume 13**

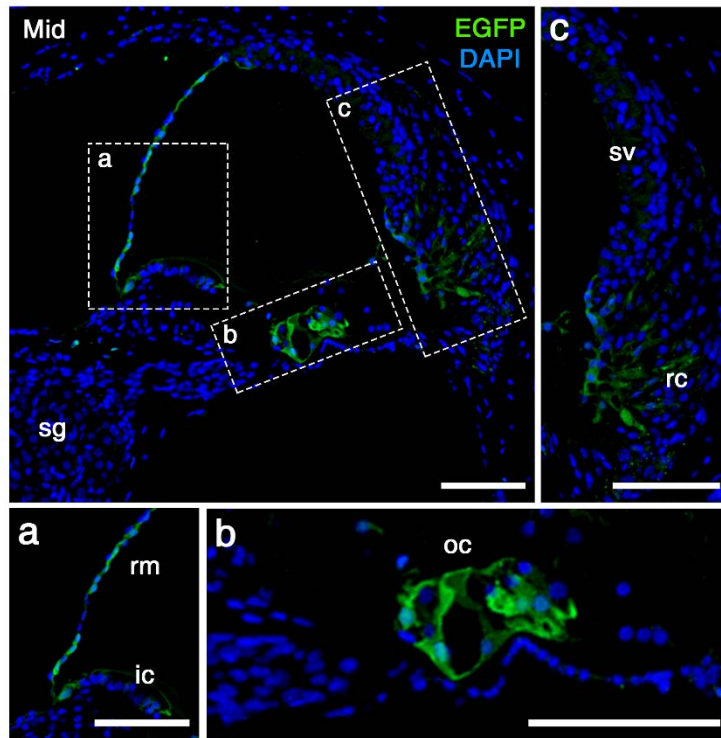
**Supplemental Information**

**Targeted Gene Delivery into the Mammalian  
Inner Ear Using Synthetic Serotypes  
of Adeno-Associated Virus Vectors**

**Min-A Kim, Nari Ryu, Hye-Min Kim, Ye-Ri Kim, Byeonghyeon Lee, Tae-Jun  
Kwon, Jinwoong Bok, and Un-Kyung Kim**

1 **Supplementary Figures**

2



3

4 **Supplementary Figure 1. Transduction of rAAV2/DJ into murine cochlea.** EGFP

5 immunoreactivity (green) in cross-sections of cochlear middle turns in 3-week-old mice

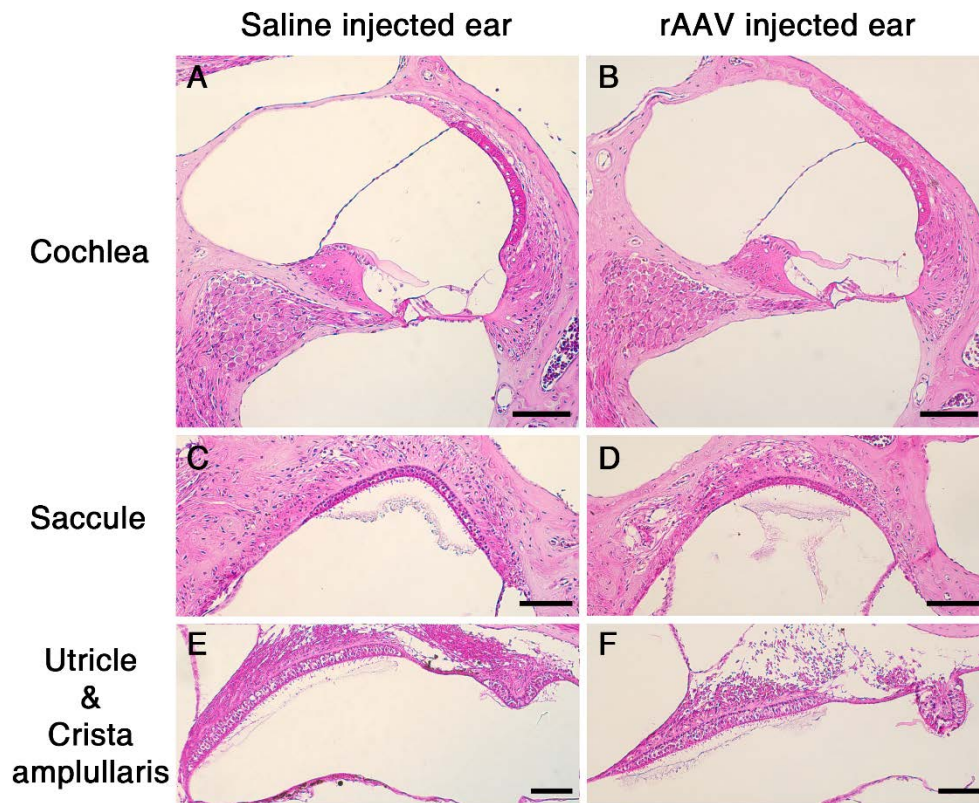
6 infected with rAAV2/DJ. High-magnification images of Reissner's membrane, interdental

7 cells, organ of Corti, root cells, and stria vascularis are shown (a–c, respectively). Cell nuclei

8 were stained with DAPI (blue). ic, interdental cell; oc, organ of Corti; rc, root cell; rm,

9 Reissner's membrane; sg, spiral ganglion; sv, stria vascularis. Scale bars represent 100  $\mu$ m.

10



11

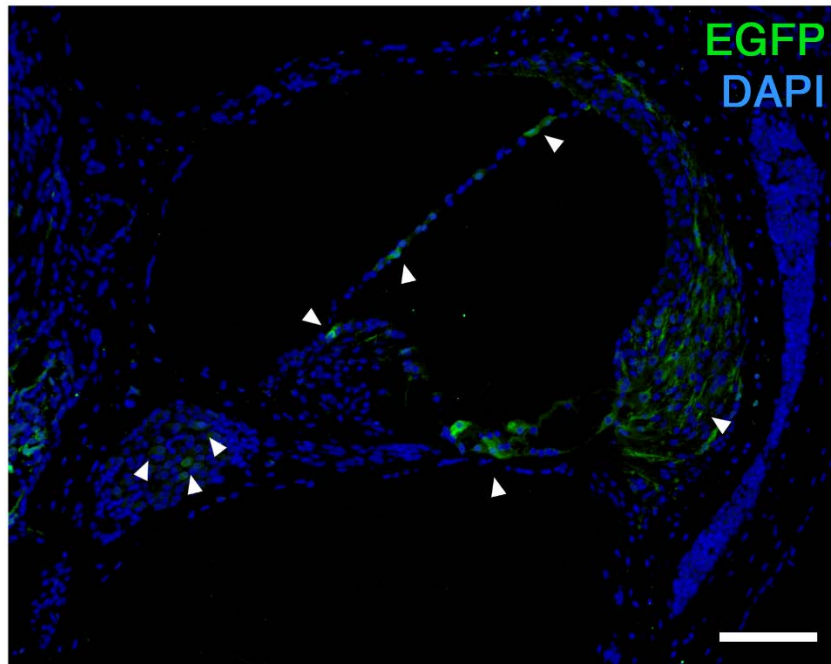
12 **Supplementary Figure 2. Histological observations of the utricle, saccule, and crista**

13 **ampullaris.** Cross-sections of the (A and B) cochlear middle turn, (C and D) saccule, (E and

14 F) utricle and crista ampullaris from saline and rAAV injected ears of mice were obtained at 3

15 weeks of age and stained with hematoxylin-eosin. Representative images of three replicates

16 each are shown. Scale bars: 100  $\mu$ m.



17

18 **Supplementary Figure 3. EGFP expression in the cochlea infected by rAAV2/PHP.B.**

19 EGFP immunoreactivity (green) in cross-sections of cochlear basal turns in mice 3 weeks of  
20 age are shown. Nuclei were stained with DAPI (blue). White arrowheads indicate  
21 representative EGFP-expressing cells. Scale bar represents 100  $\mu$ m.

22