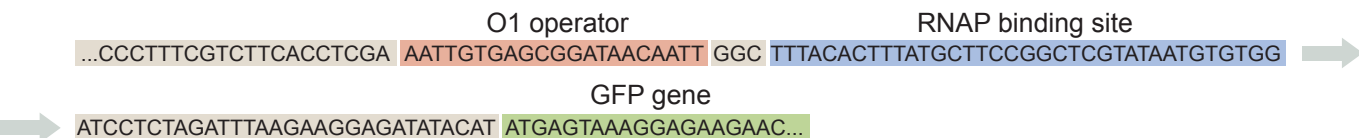
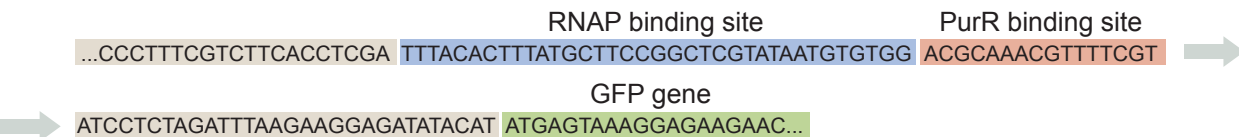


(A)

Simple *lac* repression constructUpstream *lac* repression constructSimple *pur* repression construct

(B)

## Inferred PurR binding site

-35 PurR binding site -10

AAGACAC ACGCAAACGTTTTTCGT TTATACT

## Inferred XylR binding sites

XylR left site XylR right site

AAAAGACATTACGTAA AGCCAT TGTAAAAAATGATAA