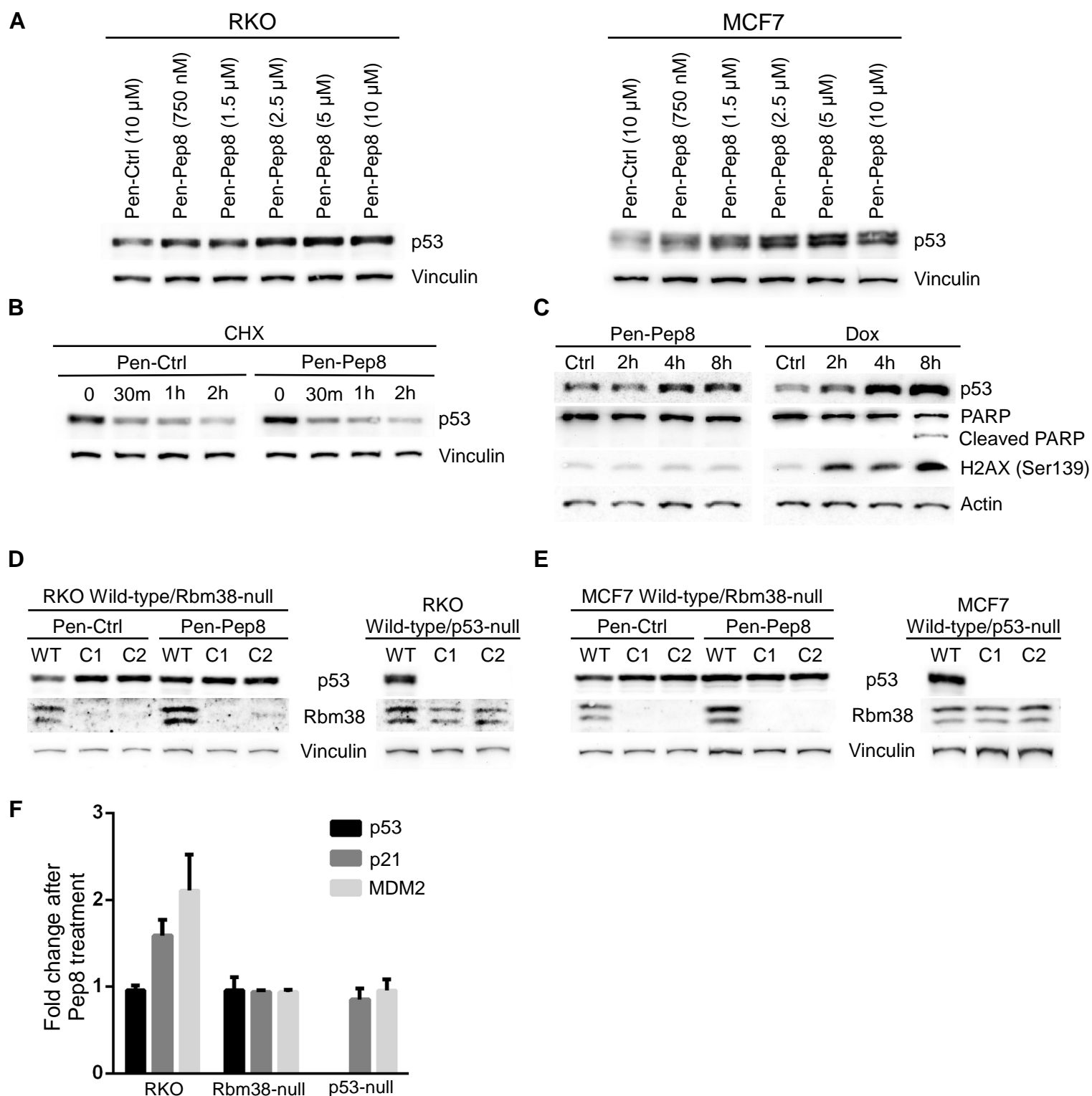


Supplementary Fig. 2



Supplementary Fig. 2. Pep8 enhances p53 expression in a Rbm38-dependent manner.

A Immunoblot for the dose response in RKO and MCF7 cells treated with the indicated amount of peptide for 18 h. **B** Immunoblot for RKO cells treated with Pen-Ctrl or Pen-Pep8 (5 μ M) for 18 h followed by indicated time with cyclohexamide (50 μ g/mL). **C** Immunoblot for RKO cells treated with 10 μ g/mL doxorubicin or 5 μ M Pen-Pep8 for 2, 4, and 8 h. **D** Immunoblot for Rbm38-null RKO clones (C1 and C2) treated with peptides (5 μ M for 18 h) and p53-null RKO clones (C1 and C2). **E** Immunoblot for Rbm38-null MCF7 clones (C1 and C2) treated with peptides (5 μ M for 18 h) and p53-null MCF7 clones (C1 and C2). **F** Quantification of the fold change of mRNA levels in RKO cells for p53, p21 and MDM2 after Pen-Pep8 treatment (5 μ M for 18 h) compared to Pen-Ctrl. Values represent the mean \pm SEM of three independent experiments.