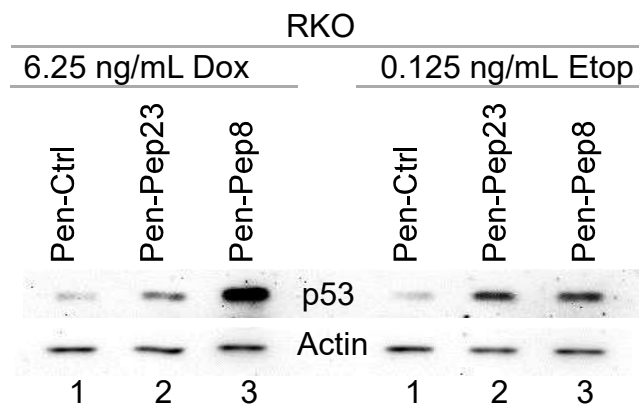


Supplementary Fig. 4.



Supplementary Fig. 4. Pep8 and Pep23 sensitize tumor cells to p53 induction by doxorubicin and etoposide. Immunoblot for RKO cells treated with Pen-Ctrl, Pen-Pep23 or Pen-Pep8 (1.5 μ M) with the addition of either 6.25 ng/mL doxorubicin or 0.125 ng/mL etoposide for 18 h.