

**Coupling of PARP1-mediated chromatin structural changes to transcriptional RNA
polymerase II elongation and cotranscriptional splicing**

Elena A. Matveeva¹, Qamar M. H. Al-Tinawi^{1,2}, Eric C. Rouchka^{3,4}, Yvonne N. Fondufe-Mittendorf^{1*}

¹Department of Molecular and Cellular Biochemistry, University of Kentucky, Lexington, KY 40536, USA; ²Alfaisal University, Al Maather' Riyadh, 12714 Saudi Arabia; ³Kentucky Biomedical Research Infrastructure Network Bioinformatics Core, 522 East Gray Street, Louisville, KY 40292, USA; ⁴Department of Computer Engineering and Computer Science, University of Louisville, Louisville, KY 40292, USA

EAM: elmatva@uky.edu

QMHA-T: qaltinawi@alfaisal.edu

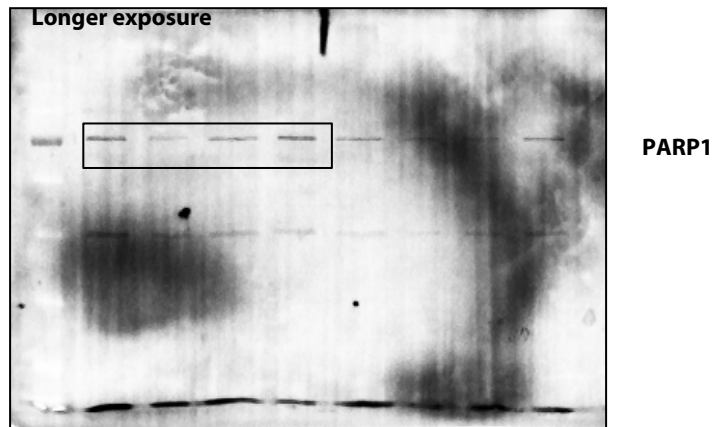
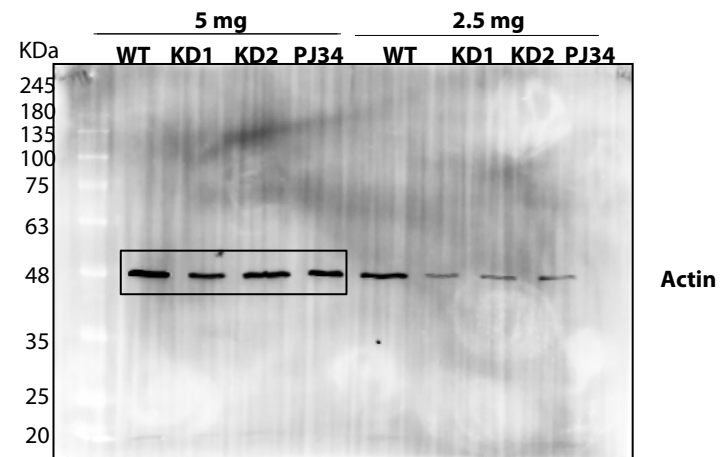
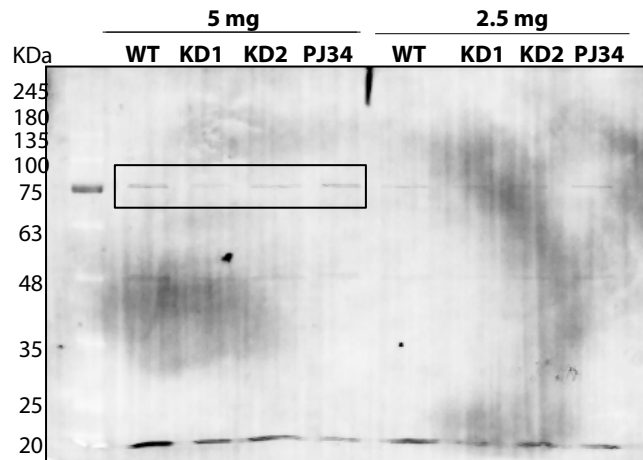
ECR: eric.rouchka@louisville.edu

YNF-M: y.fondufe-mittendorf@uky.edu

*Corresponding author: Yvonne N. Fondufe-Mittendorf

Western blot images of cutout gels in Additional file 1: Supplementary Figure S1 and full agarose gel image of cutout gels in Additional File 1: Supplemental Figure S2

Full gel images of
PARP1 and actin
supporting
Supplemental Figure 1



Full agarose gel image
of splicing isoforms
supporting
Supplemental Figure 2

DNA markers
PCR 1kb

