

Supplementary Material

Table S1. Correlation between Srx expression and clinical pathological features in gastric cancer.

Characteristics	n	Srx		<i>p</i> value
		positive	negative	
Age	47			
19-59 years	14	13	1	0.657
60- 87 years	33	27	6	
Sex				
Female	15	13	2	1
Male	32	27	5	
Differentiation				
Poor	37	32	5	1
Well	10	8	2	
Lymph node invasion				
Negative	17	15	2	1
Positive	30	25	5	
TNM staging				
I	8	6	2	0.303
II	11	10	1	
III	19	15	4	
IV	7	7	0	

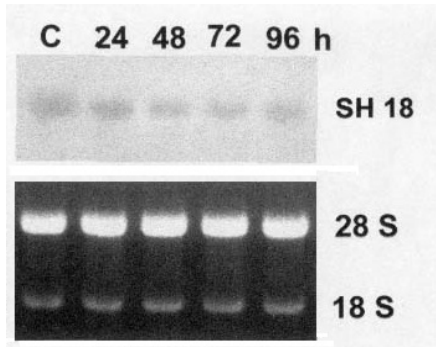


Figure S1. Northern blot of SH18.