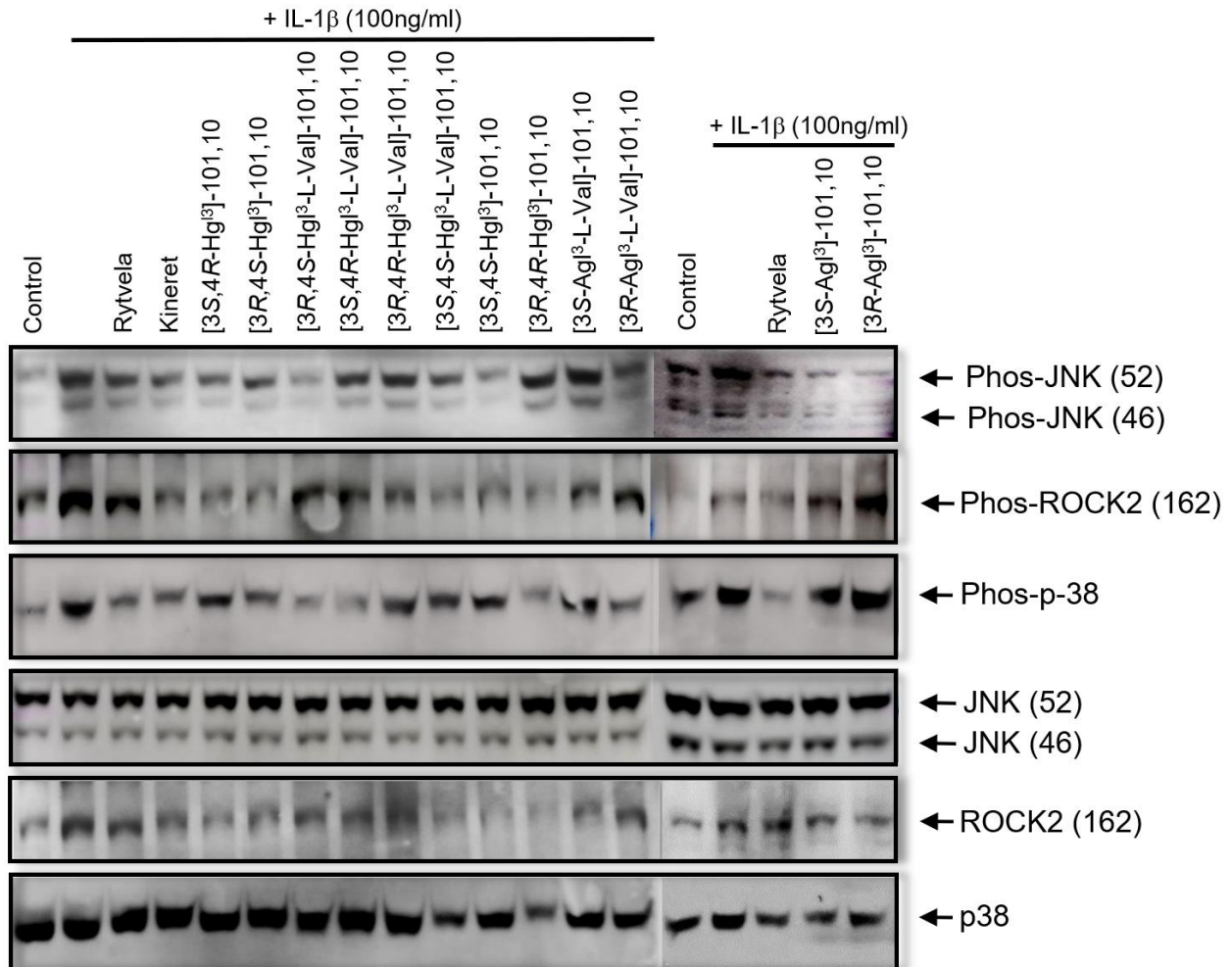


Supplementary Figure



Supplementary Figure 1. Representative Western Blots of the JNK, ROCK2 and p38 proteins. RAW-blue cells were pre-treated with peptides **1**, **5** or **6** for 30 min, then stimulated with IL-1 β for 15 min. Cell lysates were prepared and lysates (30 μ g protein per well) were electrophoresed on 12% resolving gels, transferred to PVDF membranes and incubated with antibodies for these proteins and their phosphorylated forms. Numbers in parentheses indicate the molecular weight of the protein of interest in kilo-daltons (kDa).