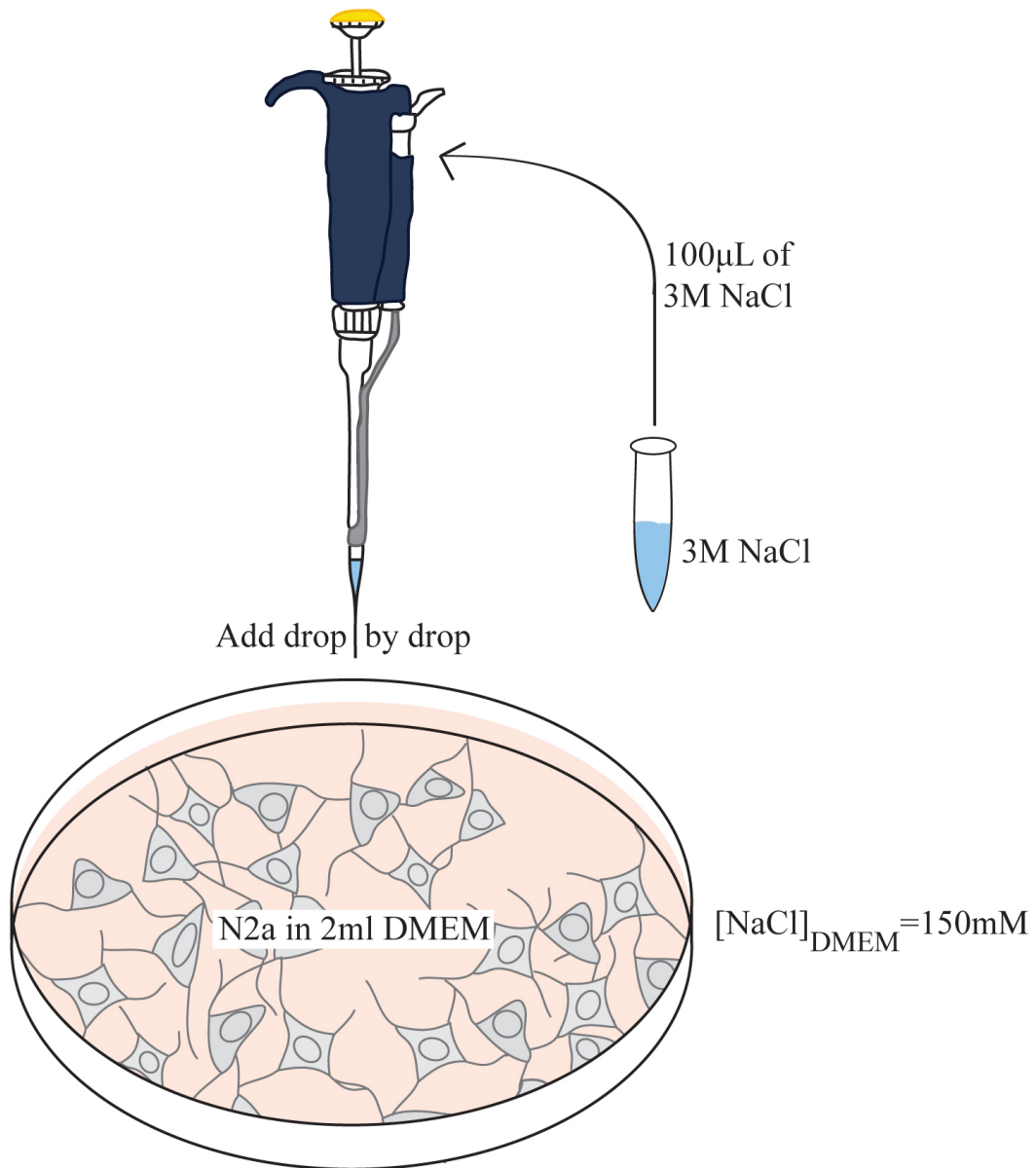


Hyperosmotic stress induces cell-dependent aggregation of α -synuclein

Alexandra M C Fragniere, Simon R W Stott, Shaline V Fazal, Maria Andreasen, Kirsten Scott, & Roger A Barker

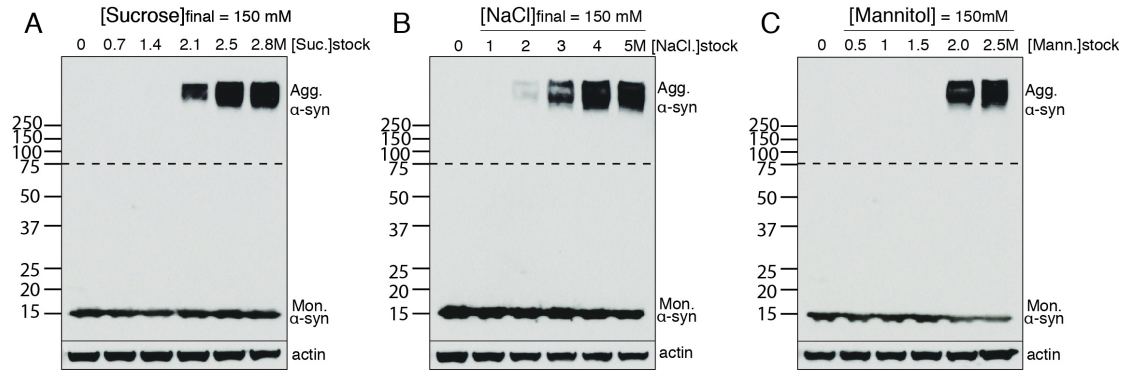
SUPPLEMENTAL FIGURES

SUPPLEMENTAL FIGURE 1.



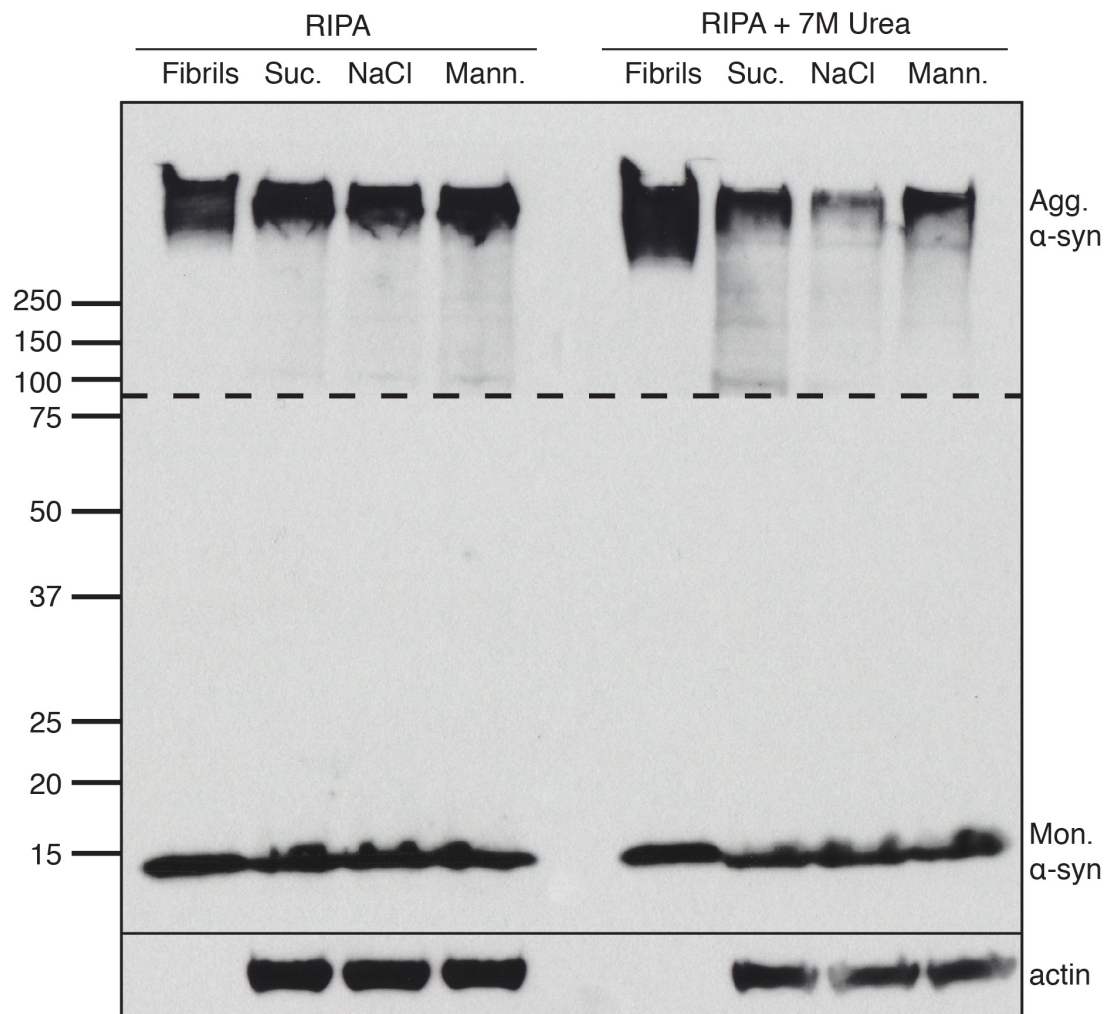
SUPPLEMENTAL FIGURE 2.

Hyperosmotic shock effect using HEK cells

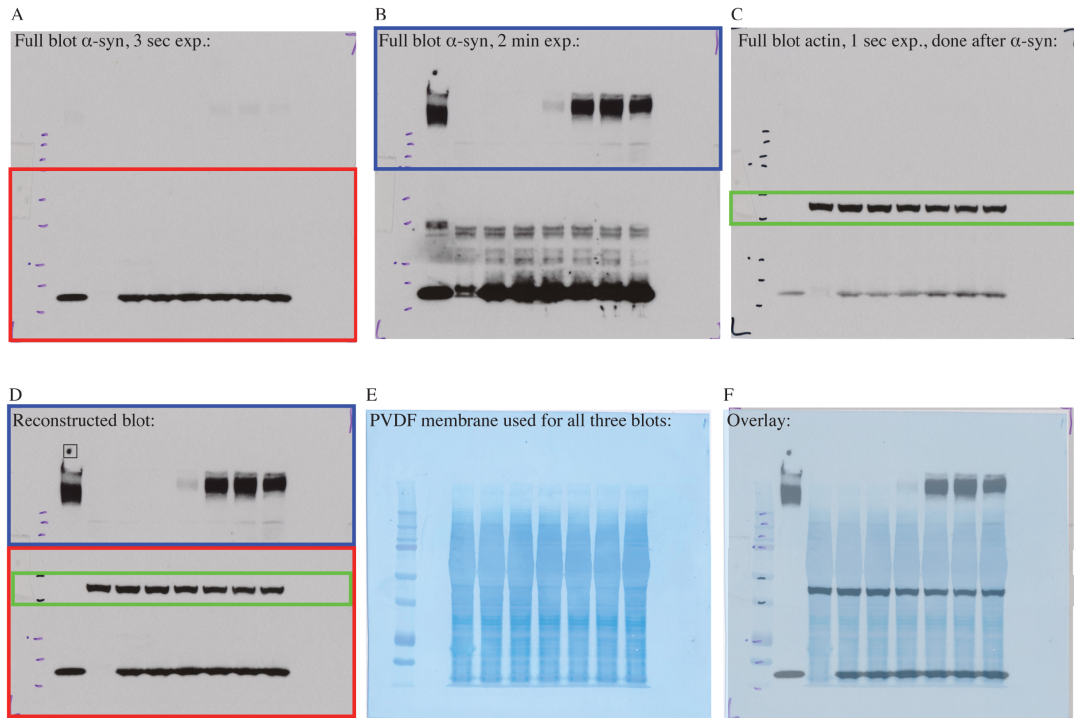


SUPPLEMENTAL FIGURE 3

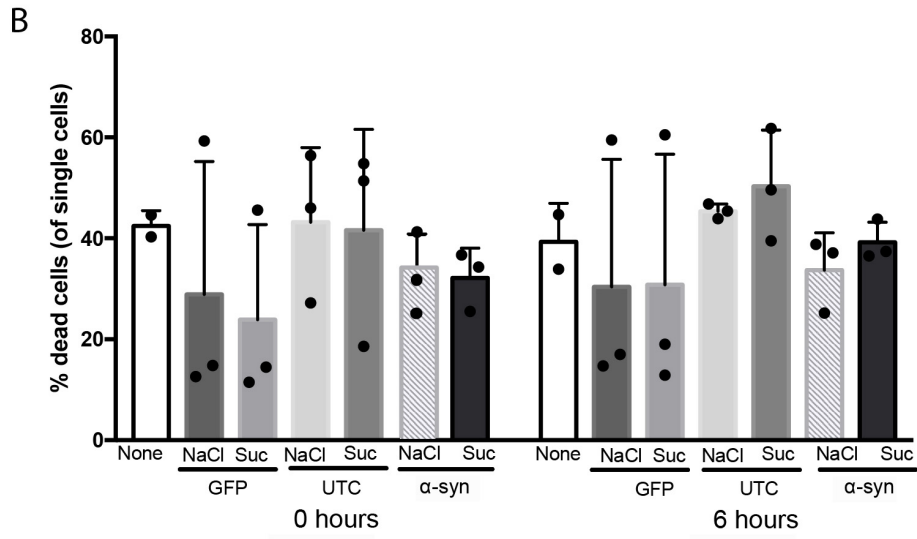
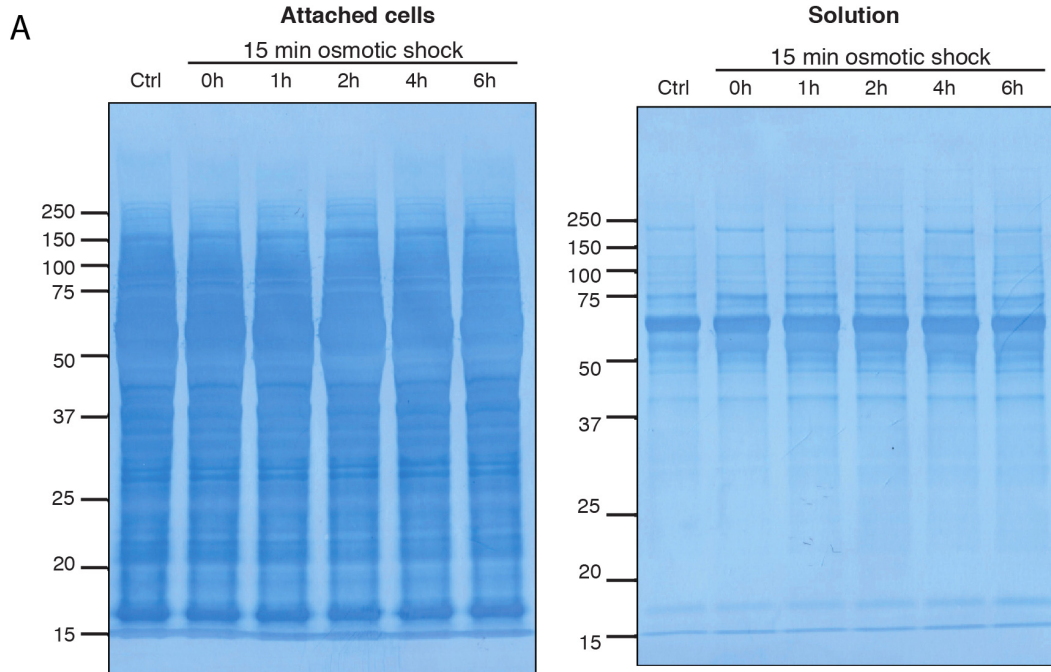
The hyperosmotic shock induced aggregates are urea-resistant



SUPPLEMENTAL FIGURE 4



SUPPLEMENTAL FIGURE 5



SUPPLEMENTAL FIGURE 6.

