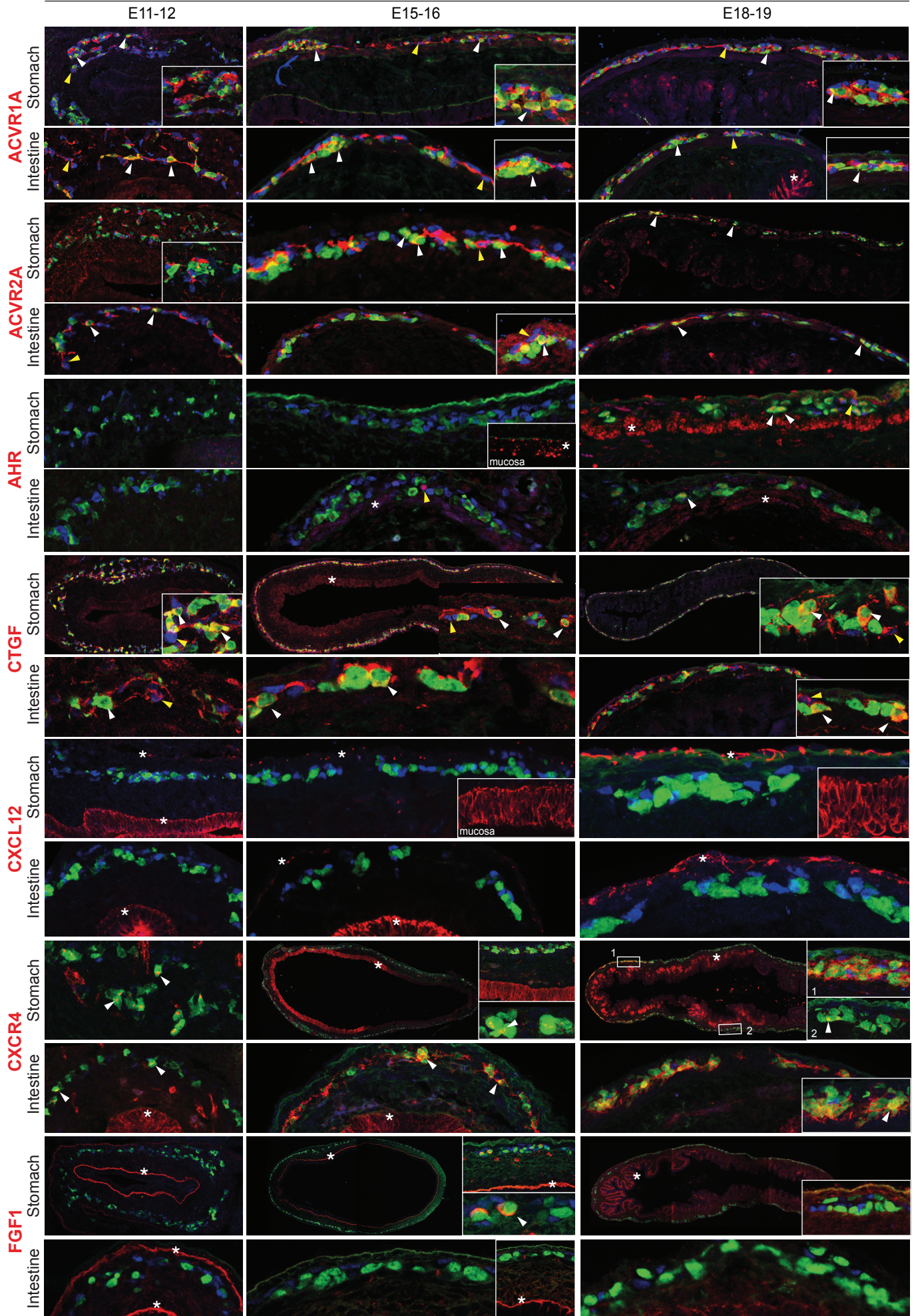
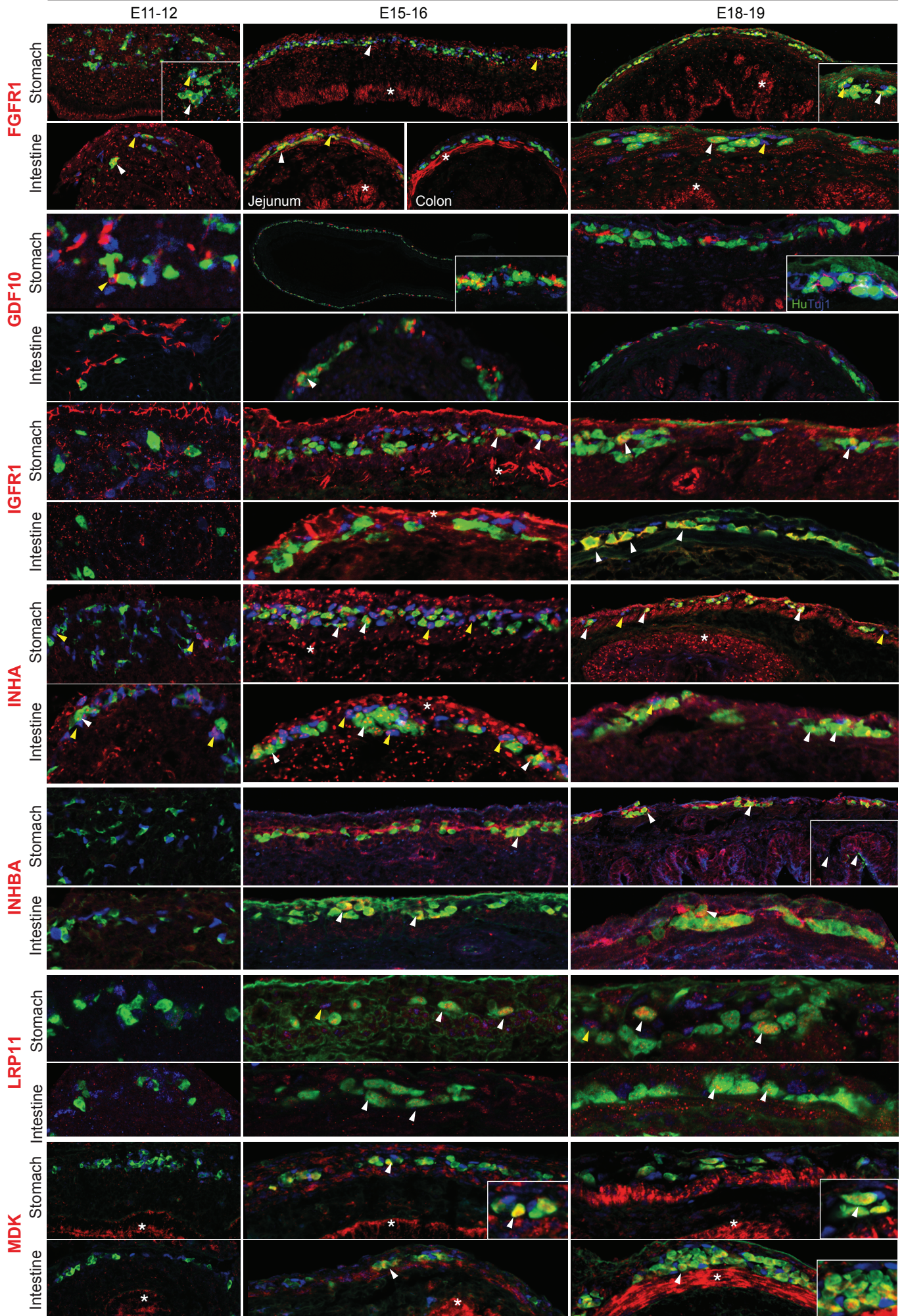


SUPPLEMENTARY FIGURE 6

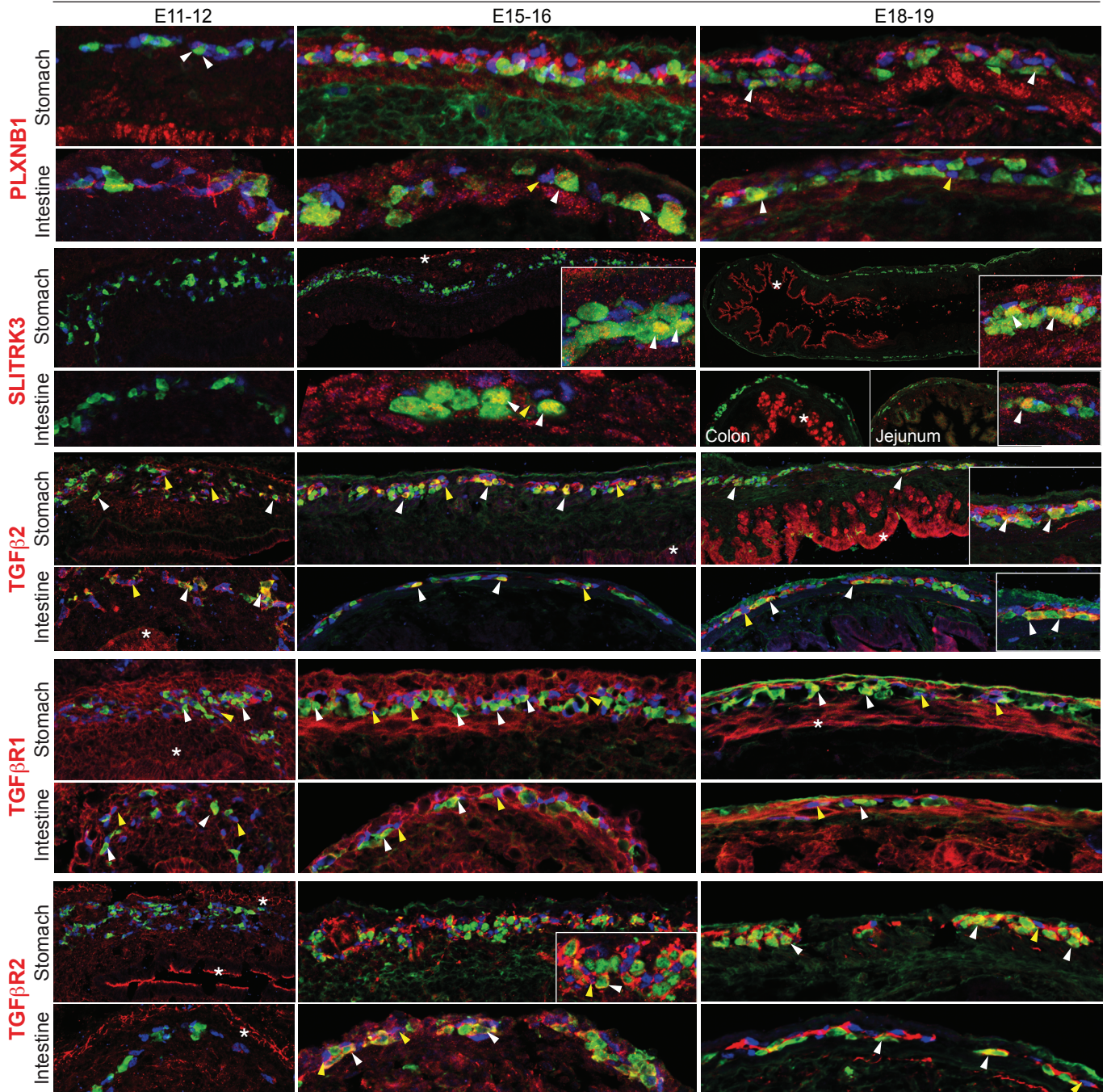
HUC/D SOX10



HUC/D SOX10



HUC/D SOX10



Supplementary Figure 6: IHC analysis of cell-cell communication components in the developing mouse bowel wall. Co-expression analysis of ligands and receptors with the neuronal marker HUC/D (white arrowheads) and the progenitor marker SOX10 (yellow arrowheads) at E11-12, E15-16 and E18-19 in stomach and intestine of mouse embryos. White boxes show higher magnification. *: expression outside the ENS (summarised also in Figure 6). CXCR4 show regional-specific subcellular distribution in the stomach at E18.5, which is indicated in box 1 (membrane) and 2 (vesicular).