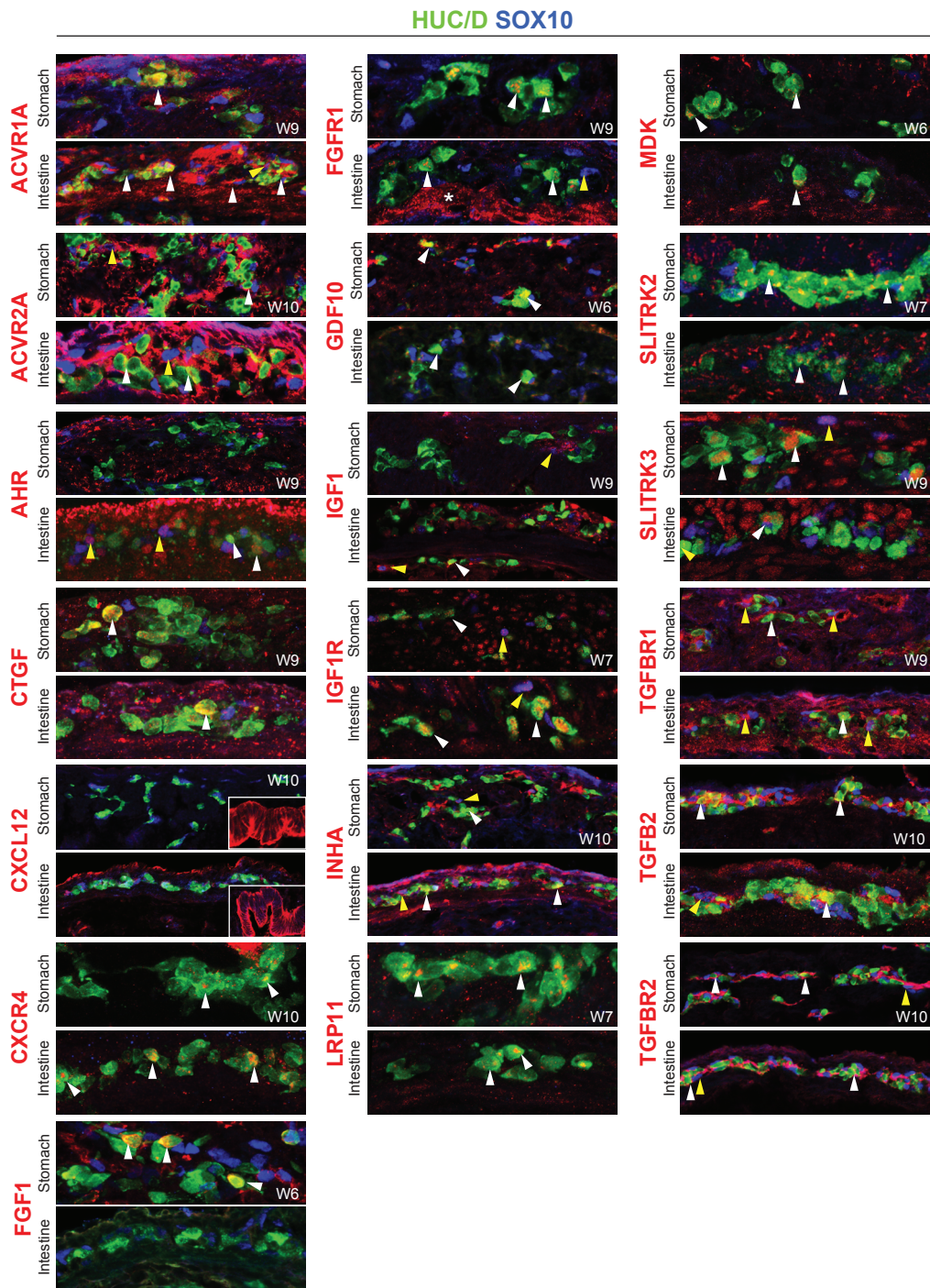


SUPPLEMENTARY FIGURE 7



Supplementary Figure 7: IHC analysis of cell-cell communication components in the developing human ENS.

Co-expression analysis of ligands and receptors with the neuronal marker HUC/D (white arrowheads) and the progenitor marker SOX10 (yellow arrowheads) at W6-10 in stomach and intestine of human embryos. Insets show mucosal expression.