

# SUPPLEMENTARY

## DATA

### PLOS ONE

*Ibrutinib increases the risk of hypertension and atrial fibrillation:  
systematic review and meta-analysis.*

Daniel Caldeira, Daniela Alves, João Costa, Joaquim J. Ferreira, Fausto J. Pinto.

**Corresponding author:** Prof. Daniel Caldeira, Faculdade de Medicina da Universidade de Lisboa, Av. Prof. Egas Moniz, Lisboa, 1649-028, Portugal. E-mail: dgcaldeira@hotmail.com

**Phone number:** (+351) 21 797 34 53; **Fax number:** (+351) 21 781 96 88.

# Contents

Search Strategies .....	3
Figure A: Overview of trials' risk of bias. ....	4
Figure B: Funnel plot for publication bias evaluation – hypertension. ....	5
Figure C: Funnel plot for publication bias evaluation – atrial fibrillation. ....	6
Figure D: Forest plot of risk associated with ibrutinib according to the controls used in the trials.....	7
Figure E: Meta-regression evaluating the association of hypertension risk and follow-up .....	8
Figure F: Meta-regression evaluating the association of atrial fibrillation risk and follow-up.....	9
Figure G: Forest plot with meta-analyses using the Mantel-Haenszel method and random effects models. ....	10

## Search Strategies

### Ovid MEDLINE

#	Searches
1	ibrutinib.af.
2	randomized controlled trial.pt.
3	controlled clinical trial.pt.
4	randomized.ab.
5	placebo.ab.
6	randomly.ab.
7	clinical trials as topic.sh.
8	trial.ti.
9	2 or 3 or 4 or 5 or 6 or 7 or 8
10	exp animals/ not humans.sh.
11	9 not 10
12	1 and 11

### EMBASE

#	Searches
1	ibrutinib.
2	random*:ab,ti OR placebo*:de,ab,ti OR (double NEXT/1 blind*):ab,ti.
3	1 and 2

### Ovid CENTRAL

#	Searches
1	ibrutinib.af.

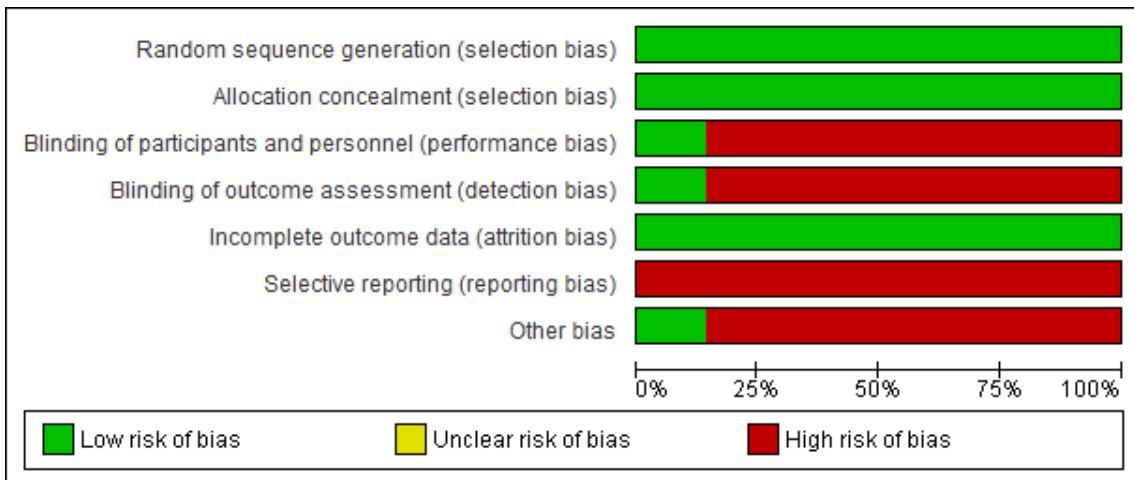


Figure A: Overview of trials' risk of bias.

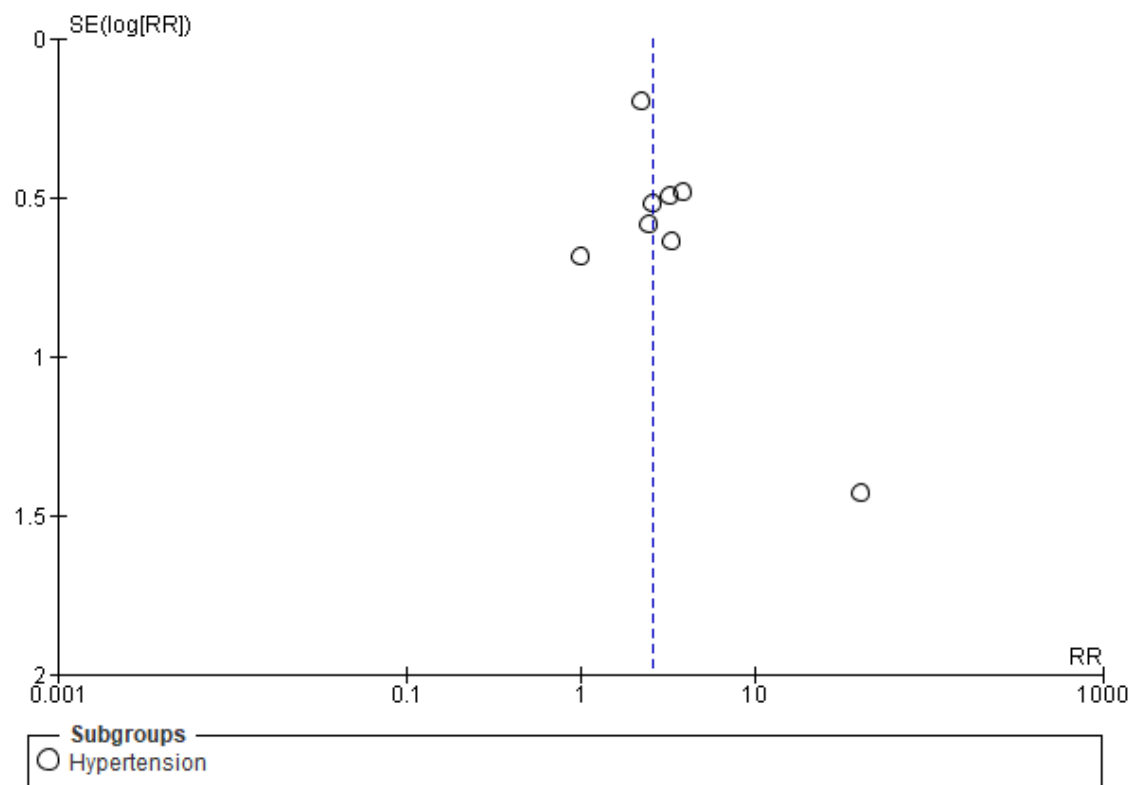


Figure B: Funnel plot for publication bias evaluation – hypertension.

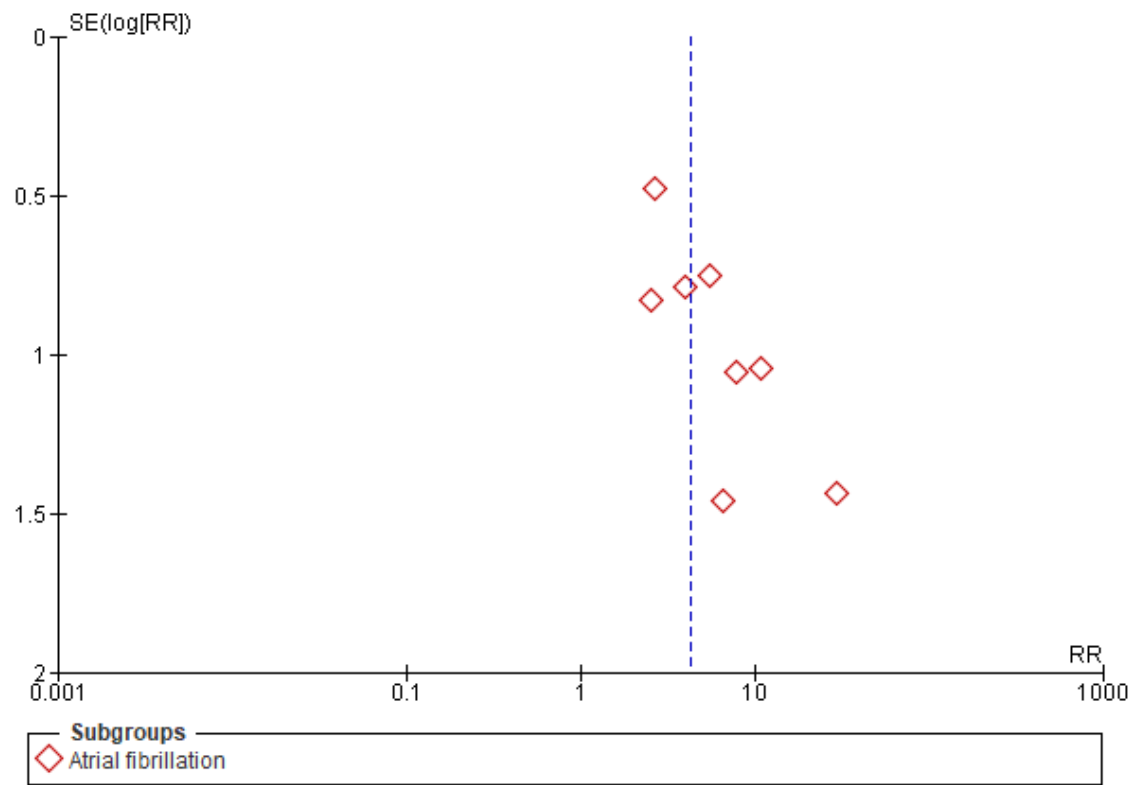


Figure C: Funnel plot for publication bias evaluation – atrial fibrillation.

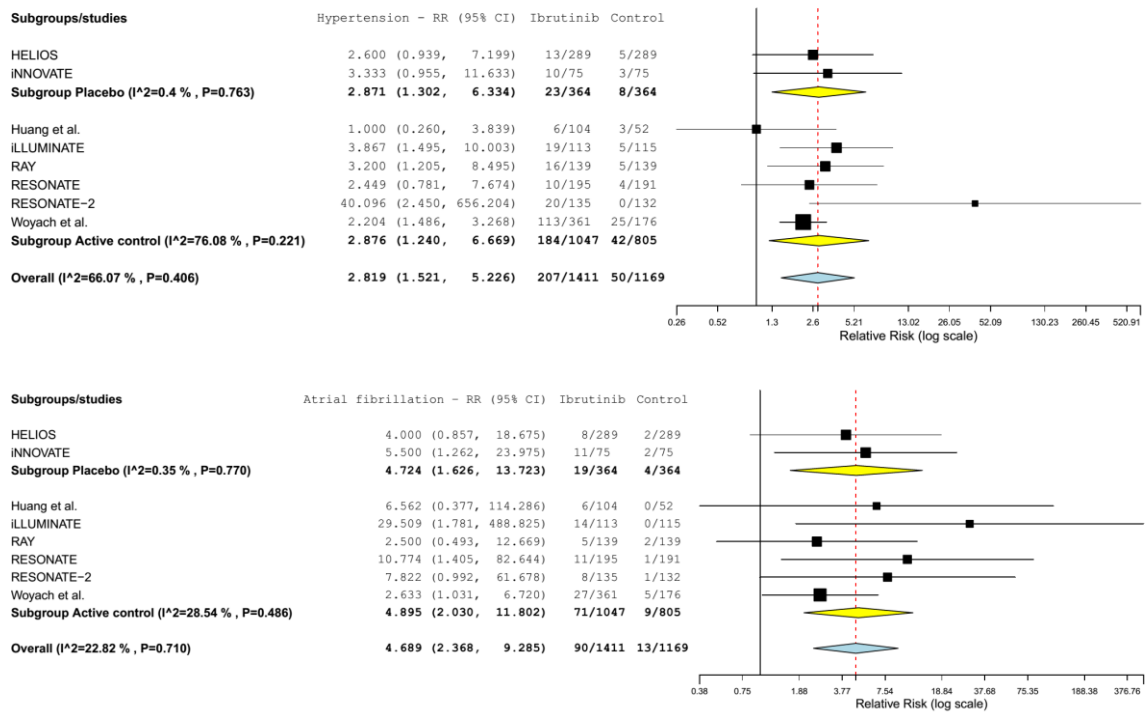


Figure D: Forest plot of risk associated with ibrutinib according to the controls used in the trials. P-value for interaction between groups regarding hypertension: p=0.99; P-value for interaction between groups regarding atrial fibrillation: p=0.96.

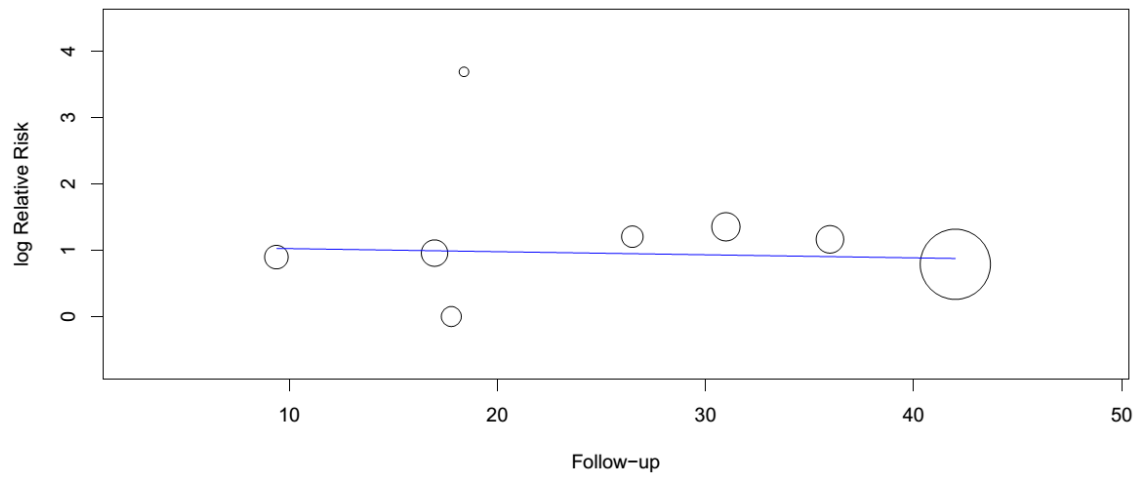


Figure E: Meta-regression evaluating the association of hypertension risk and follow-up ( $p=0.93$ ).



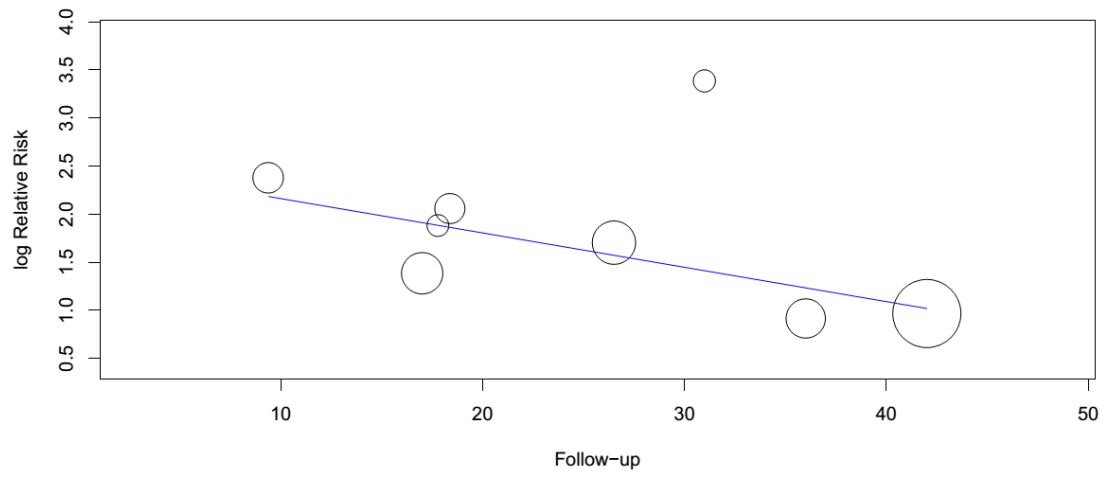


Figure F: Meta-regression evaluating the association of atrial fibrillation risk and follow-up ( $p=0.158$ ).

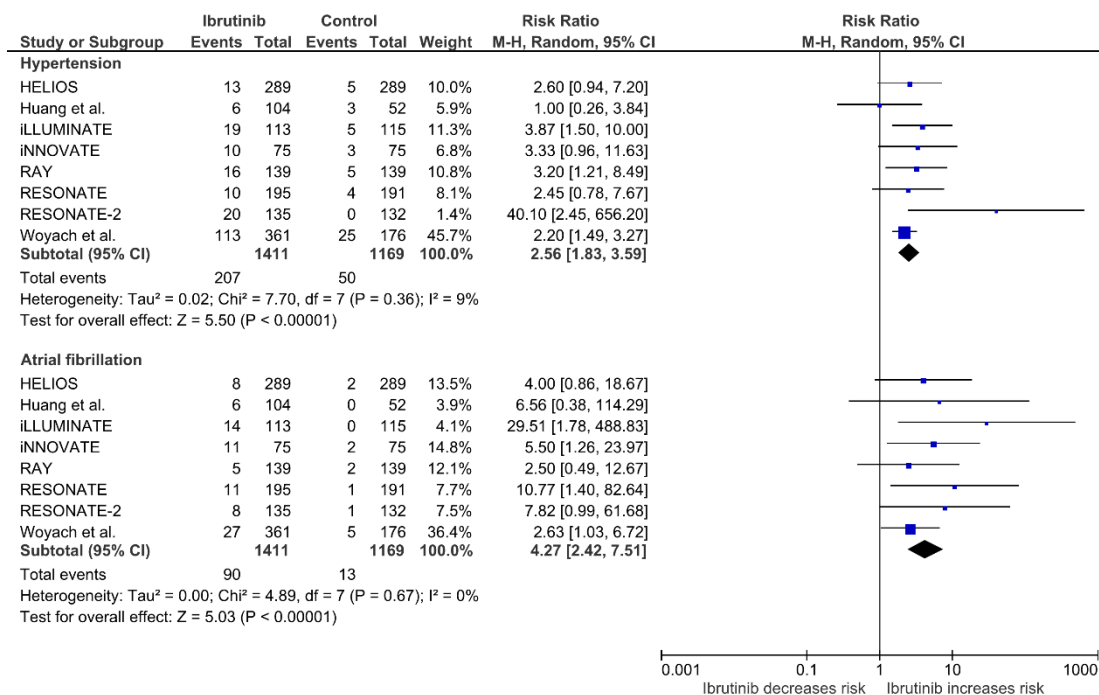


Figure G: Forest plot with meta-analyses using the Mantel-Haenszel method and random effects models.