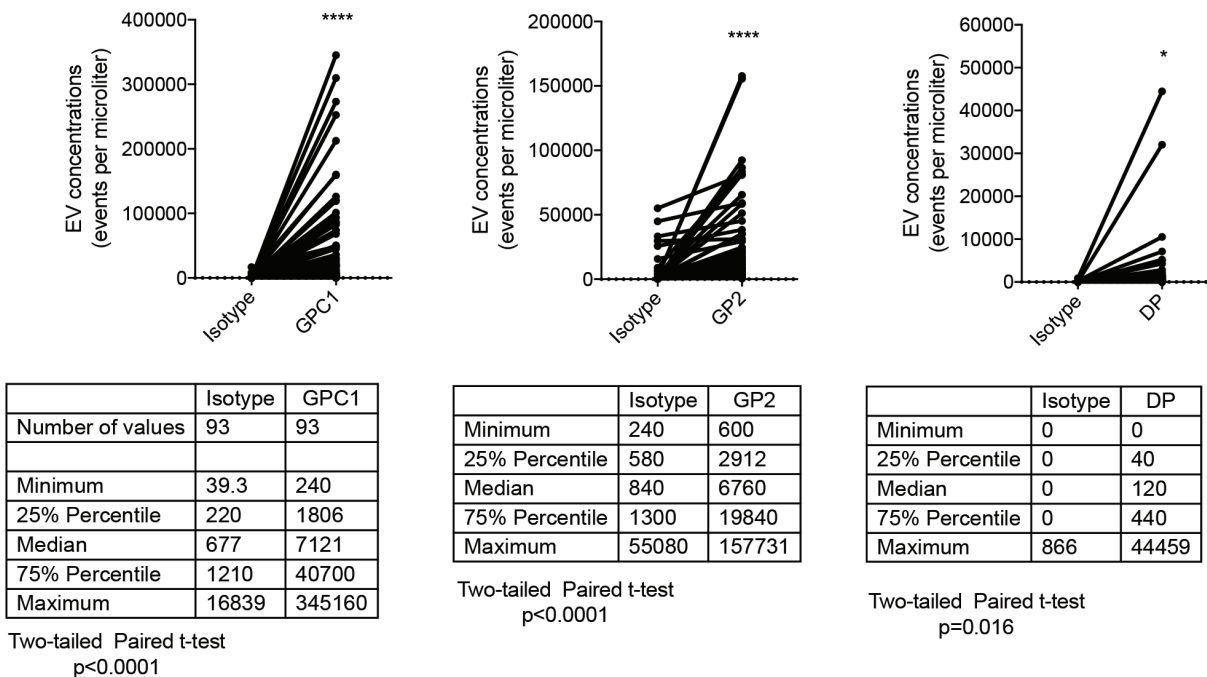
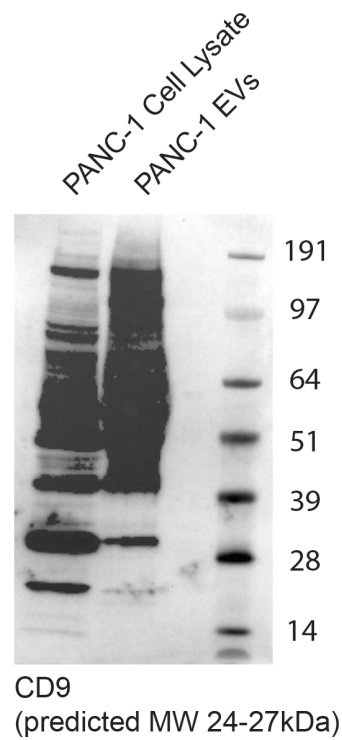
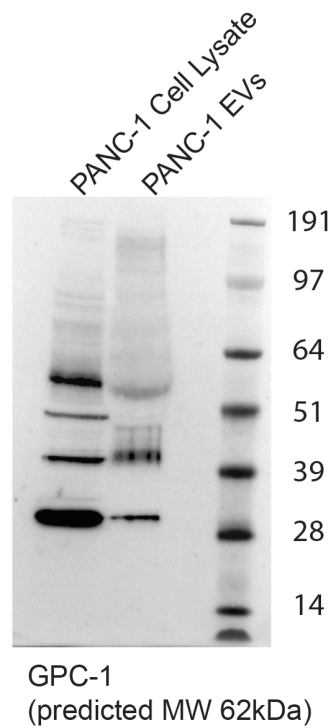
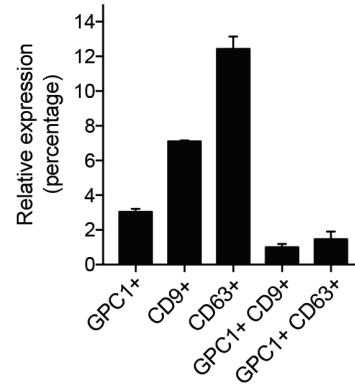
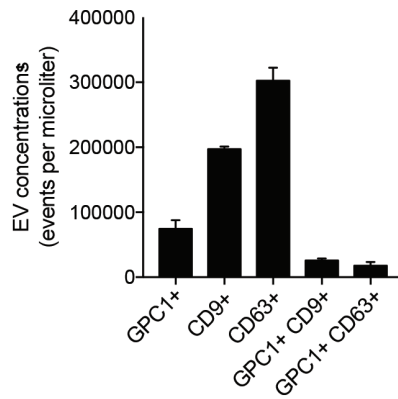
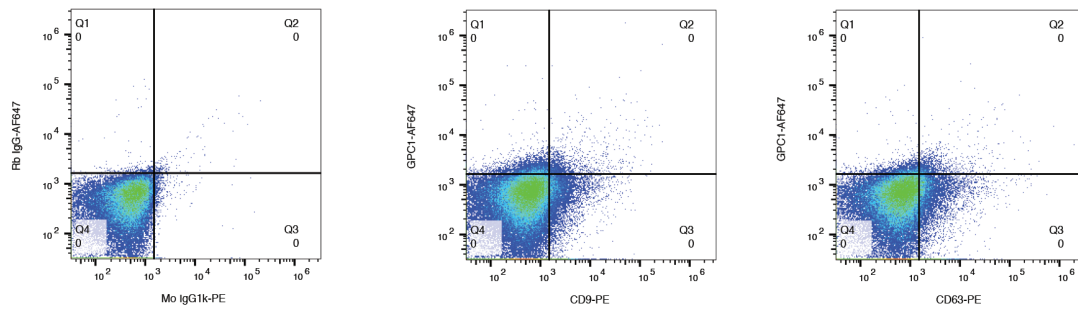


Glypican-1 and glycoprotein 2 bearing extracellular vesicles do not discern pancreatic cancer from benign pancreatic diseases



Supplementary Figure 1: Nanoscale flow cytometric evaluation and results of isotype stained plasma samples. Corresponding isotype values are listed for each patient plasma sample analyzed. Each table lists the results generated for each biomarker-isotype pair.



Supplementary Figure 2: Nanoscale flow cytometry (top and middle panels) and Western Immunoblot analysis of PANC-1 cells. GPC1 and CD9 expression on EVs released by PANC-1 cells was observed and quantitated (top and middle panels). Western immunoblot analysis confirmed the true EV origin of GPC1-positive EVs. As expected, GPC1- and CD9-positive EVs are detected by both techniques. The presence of GPC1+ CD9- EVs and GPC1- CD9+ EVs in PANC-1 culture media was also observed (bottom panel).