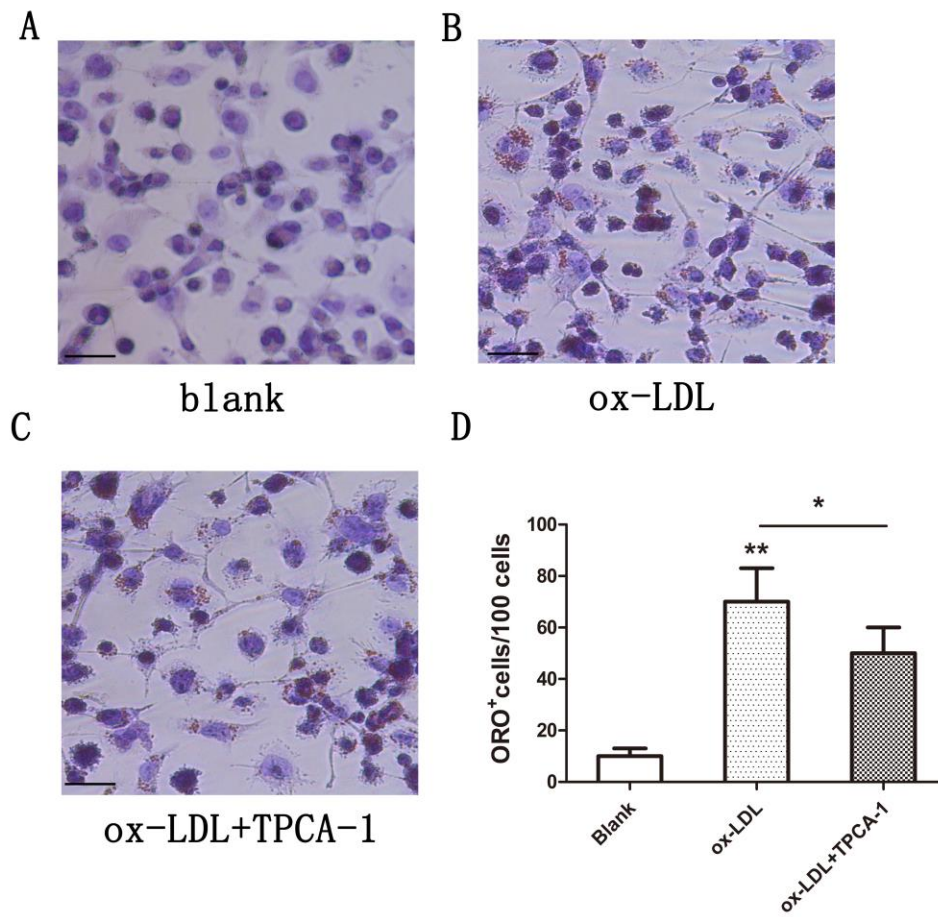
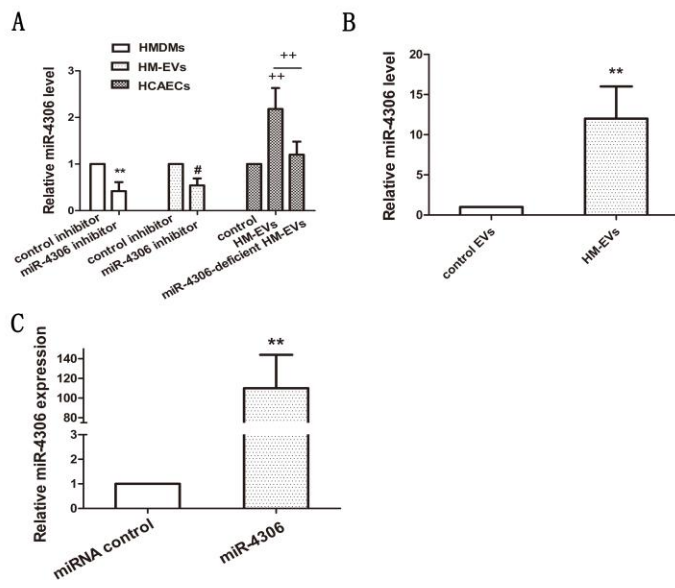


Supple fig 1

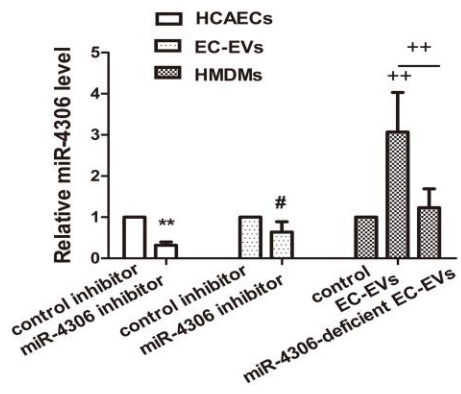


Supple fig 2

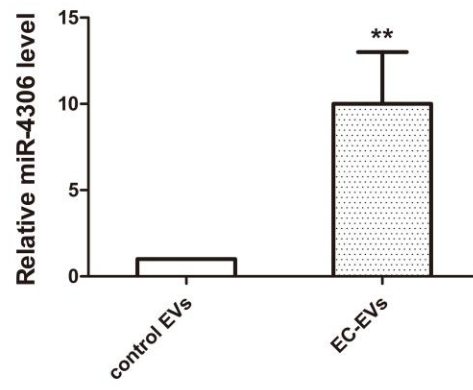


Supple fig 3

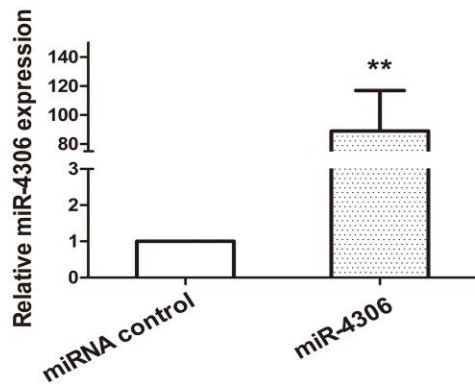
A



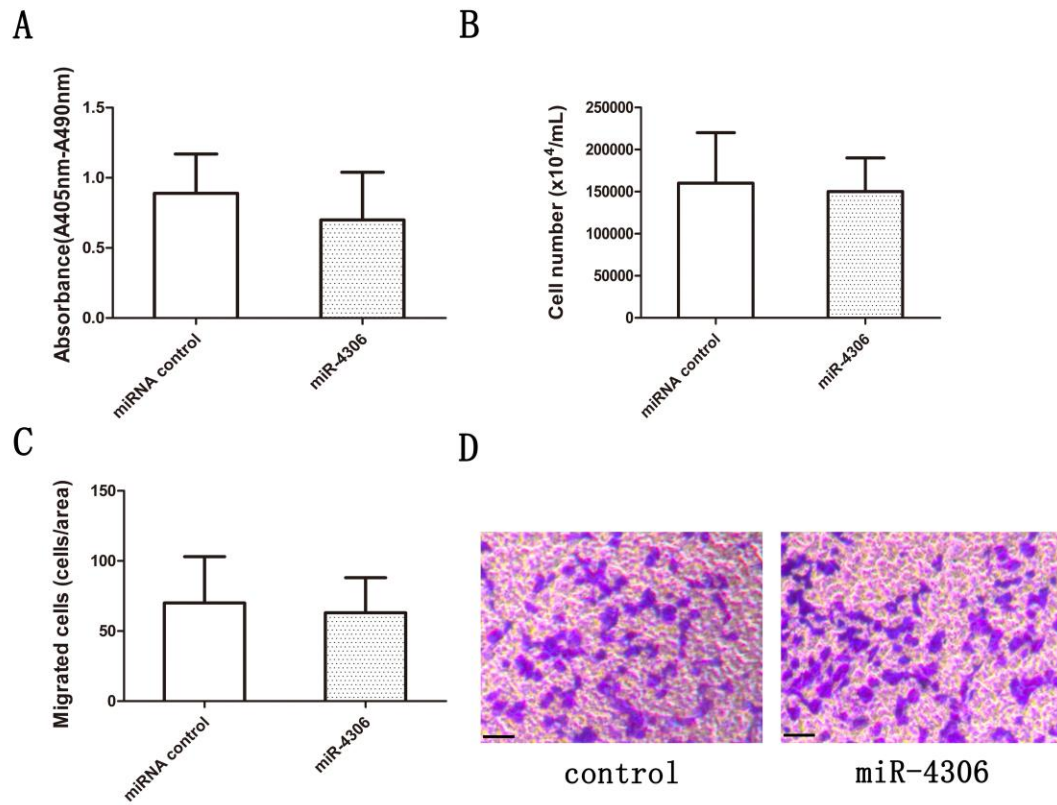
B



C



Supple 4



Supple fig 5

Supplementary Table 1 Clinical characteristics of patients

	Control (n=15)	Elective PCI (n=18)	Emergency (n=20)	PCI
Age	58.44±10.34	64.54±10.54	57.44±9.89	
Sex				
Male	7	10	12	
Female	8	8	8	
Family history (%)	13	16	15	
Diabetes mellitus (%)	13	14	13	
Hypertension (%)	36	40	35	
Smoking (%)	15	40*	45*	
Medication				

Nitrates (%)	100	56	100
Statins (%)	100	100	50
Anti-platelet drugs (%)	100	100	40
$\beta$ -Blocker (%)	67	100	55
ACE/ARB inhibitors (%)	73	100	40
Coronary artery diseases			
1-vessel disease		7	12
2-vessel diseases		7	5
3-vessel diseases		4	3

ACEI, angiotensin converting enzyme inhibitor; ARB, angiotensin receptor blocker. Continuous values are shown as the mean $\pm$ SD. \* $p$ < 0.05.

Supplementary Table 2.

(mg/dl)	Control group	TPCA-1 group
TC	215.6 $\pm$ 76.3	167.3 $\pm$ 61.6*
FC	158.1 $\pm$ 65.4	103.4 $\pm$ 41.5*
CE	99.4 $\pm$ 27.8	61.7 $\pm$ 16.6*

Data are shown as the means  $\pm$  SD. FC: free cholesterol; TC: total cholesterol; CE: cholesterol ester. \* $p$ <0.05 versus control (HMDMs exposed to ox-LDL plus saline). (n=3).

Supplementary Table 3. Association between miR-4306 expression in plasma HM-EVs and lipid variables using multivariate regression analysis

Variables	Plasma levels		
	r	OR (95%CI) <sup>#</sup>	P value
TG	0.291	0.014 to 1.245	0.062
TC	0.351	0.067 to 1.893	0.051
HDL-C	-0.191	-0.139 to 1.310	0.079

LDL-C	0.523	0.015 to 0.927	0.032
-------	-------	----------------	-------

---

#Adjusted by age, sex, BMI, blood pressure level and fasting blood glucose. TC, total cholesterol; TG, total triglyceride; HDL-C, high-density lipoprotein cholesterol; LDL-C, low-density lipoprotein cholesterol