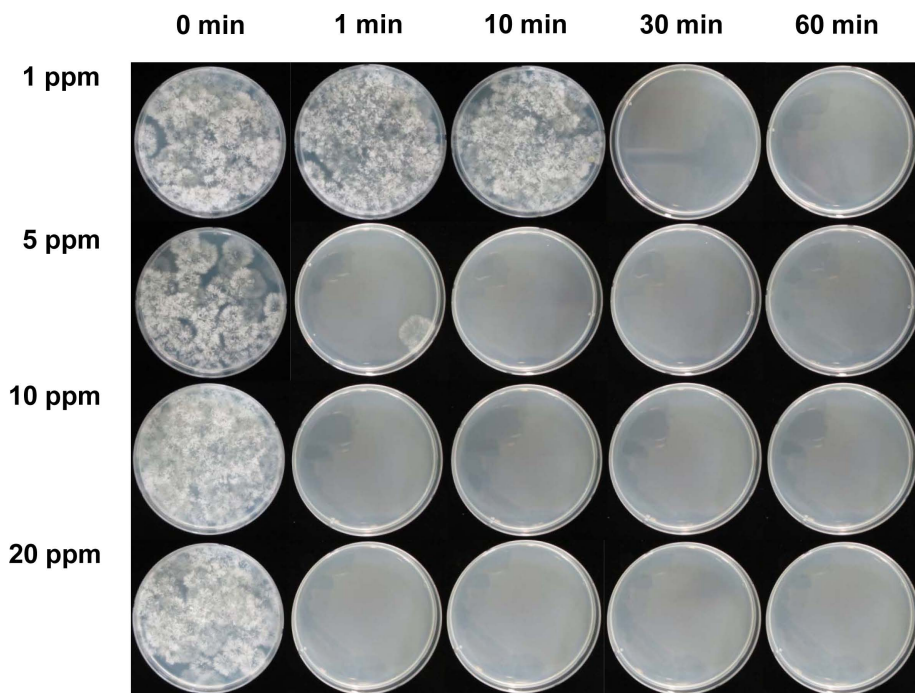


Supplementary Fig. 1. The chlorine dioxide gas generator and fumigation system. (A) Outside and (B) inside of the electrochemical ClO₂ gas generator and (C) ClO₂ gas fumigation system including the enclosed chamber and gas concentration detector used in this study.



Supplementary Fig. 2. Populations of *Diaporthe batatas* SP-d1 on potato dextrose agar (PDA) treated with gaseous ClO₂. Isolate SP-d1 (200 μ l of 5×10^3 spores/ml) was spread on acidified PAD and then treated with various ClO₂ concentrations (1, 5, 10, and 20 ppm) for 0, 1, 10, 30, and 60 min. The photographs were taken 3 days after gas treatments.