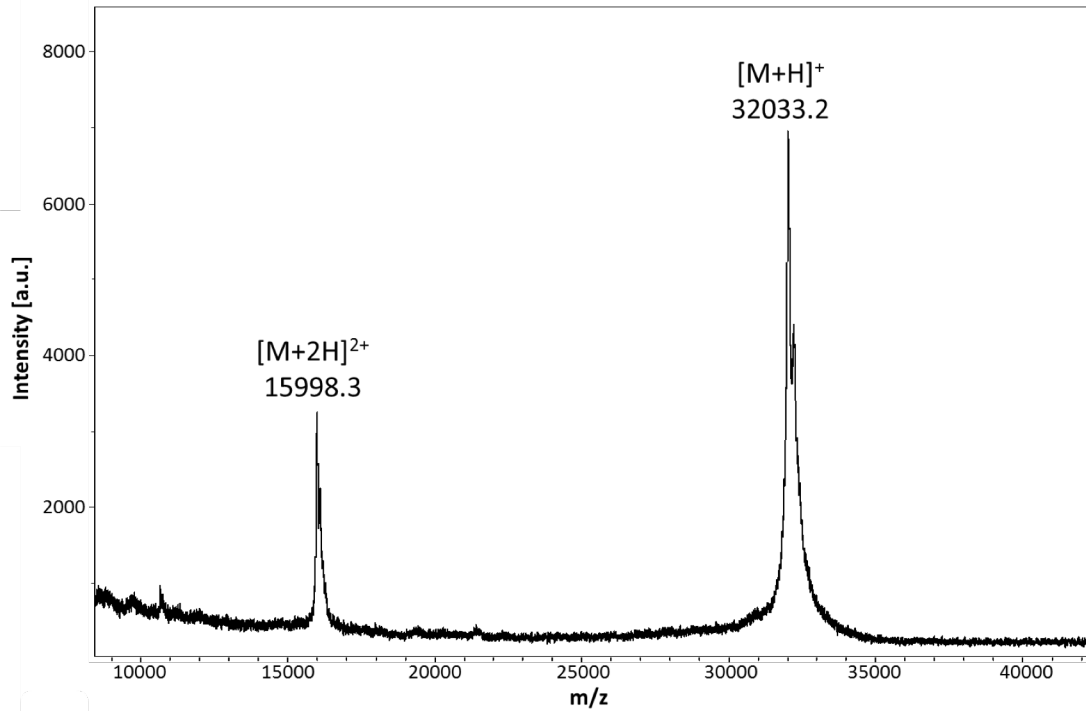


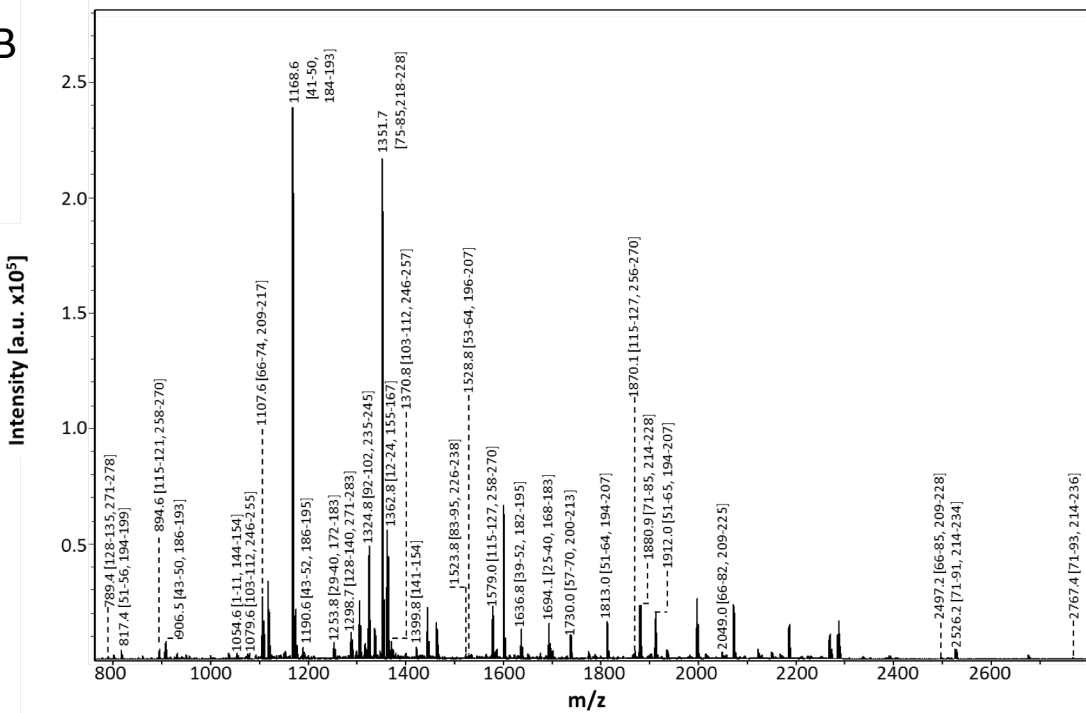
# Mass spectra, peptide fingerprints, and sequence coverage together with the listing of detected peptides for each protein indicated

Gal-3—Gal-3

A



B



C

Sequence coverage (PMF)

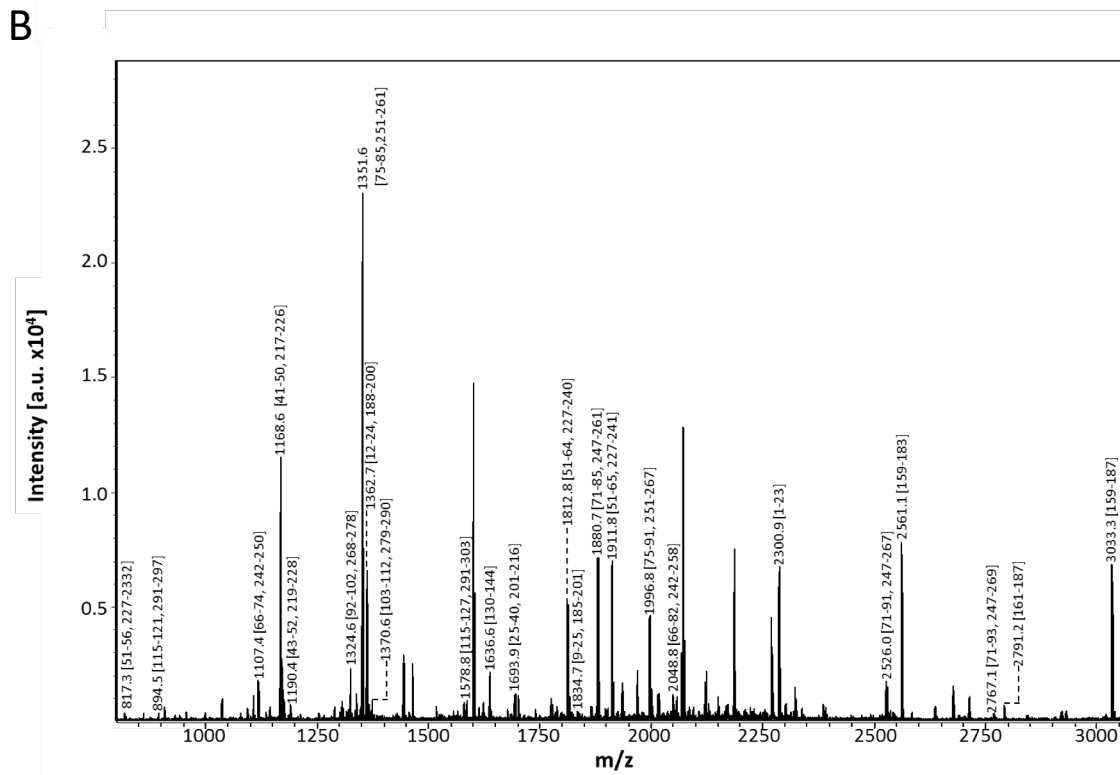
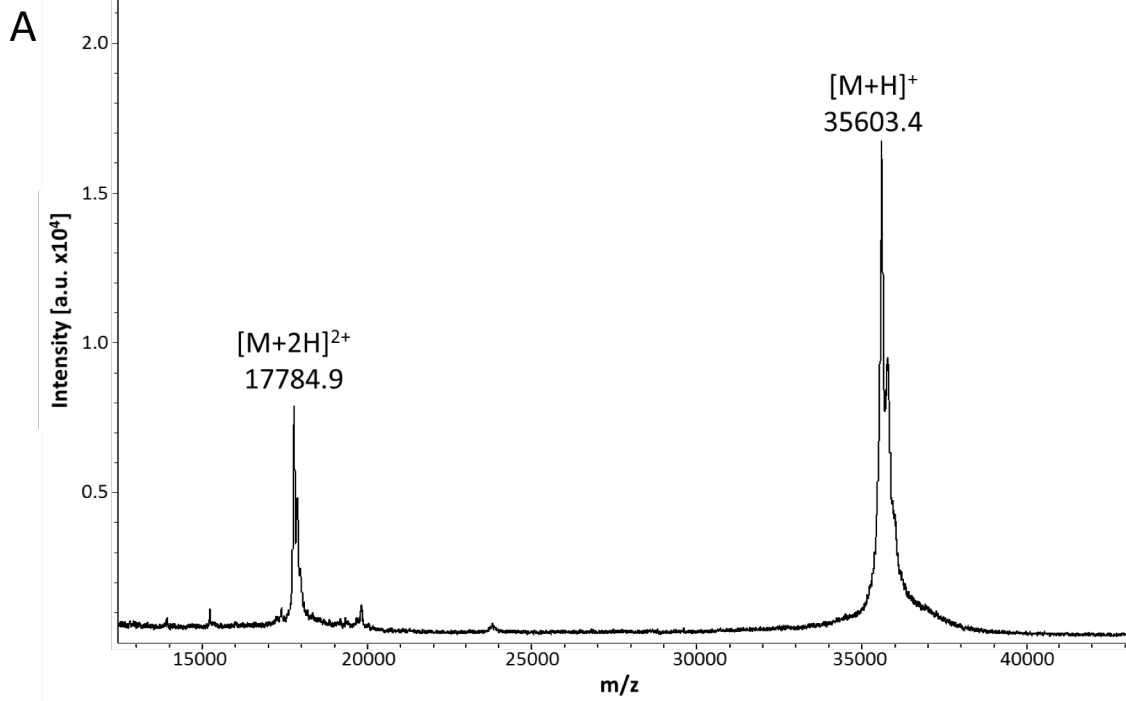
GAPAGLIVPYNLPPLGGVVRMLITILGTVKPNANRIALDFQRGNDVAFHFNPRFNENRRVIVCNTKLDNN  
 WGREERQSVFPFESGKPFKIQLVLEPDHFKVAVNDAHLLQYNHRVKKLNEISKLGISGDIDLTSASYTMIGAPA  
 GPLIVPYNLPPLGGVVRMLITILGTVKPNANRIALDFQRGNDVAFHFNPRFNENRRVIVCNTKLDNNWGRE  
 ERQSVFPFESGKPFKIQLVLEPDHFKVAVNDAHLLQYNHRVKKLNEISKLGISGDIDLTSASYTMI

**Peptide mass fingerprinting of Gal-3—Gal-3 by MALDI-TOF-MS. The list of detected peptides with their calculated (calc) and experimentally measured (exp) mass values**

Sequence	[MH] <sup>+</sup> (mono) calc	[MH] <sup>+</sup> (mono) exp
GISGDIDL	789.4	789.4
HFNPRF	817.4	817.4
NHRVKKL	894.6	894.6
QRGNDVAF	906.4	906.5
GAPAGPLIVPY	1054.6	1054.6
KVAVNDAHLL	1079.6	1079.7
CNTKLDNNW	1107.5	1107.6
DFQRGNDVAF	1168.5	1168.6
QRGNDVAFHF	1190.6	1190.6
GTVKPNANRIAL	1253.7	1253.8
GISGDIDLTASY	1298.6	1298.7
KIQVLVEPDHF	1324.7	1324.8
GREERQSVFPF	1351.7	1351.7
NLPLPGGVVPRML	1362.8	1362.8
KVAVNDAHLLQY	1370.7	1370.8
TMIGAPAGPLIVPY	1399.8	1399.8
FPFESGKPKIQV	1523.8	1523.8
NPRFNENRRVI	1528.8	1528.8
NHRVKKLNEISKL	1578.9	1579.0
ALDFQRGNDVAFHF	1636.9	1636.8
ITILGTVKPNANRIAL	1694.0	1694.1
NENRRVIVCNTKL <sup>1</sup>	1729.9	1730.0
HFNPRFNENRRVI	1812.9	1813.0
QYNHRVKKLNEISKL	1870.1	1870.1
DNNWGREERQSVFPF	1880.9	1880.9
HFNPRFNENRRVIV	1912.0	1912.0
CNTKLDNNWGREERQSV	2049.2	2049.0
CNTKLDNNWGREERQSVFPF <sup>1</sup>	2497.2	2497.2
DNNWGREERQSVFPFESGKPF	2526.2	2526.2
DNNWGREERQSVFPFESGKPKI	2767.4	2767.4

<sup>1</sup> carbamidomethylation at C

# Gal-3—8S—Gal-3



Sequence coverage (PMF)

**C**

GAPAGPLVYPYNLPLPGGVVPRMLITILGTVKPNANRIALDFQRGNDVAFHFNPRFNENRRVIVCNTKL  
DNNWGREERQSVFPFESGKPFKIQLVPEPDHFKVAVNDAHLLQYNHRVKKLNEISKLGISGDIDLTSASYT  
MIFSFSSDLQSTQASSELTEISRENVPKSGTPQLGAPAGPLVYPYNLPLPGGVVPRMLITILGTVKPNANRI  
ALDFQRGNDVAFHFNPRFNENRRVIVCNTKLDNNWGREERQSVFPFESGKPFKIQLVPEPDHFKVAV  
NDAHLLQYNHRVKKLNEISKLGISGDIDLTSASYTMI

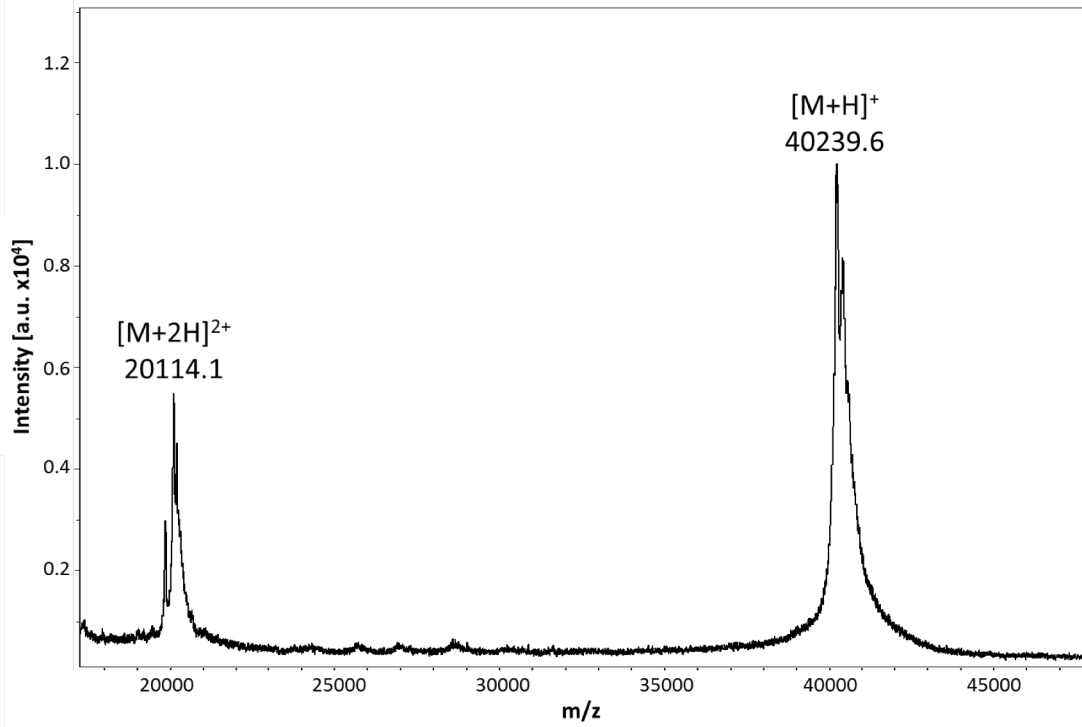
**Peptide mass fingerprinting of Gal-3—8S—Gal-3 by MALDI-TOF-MS. The list of detected peptides with their calculated (calc) and experimentally measured (exp) mass values**

Sequence	[MH] <sup>+</sup> (mono) calc	[MH] <sup>+</sup> (mono) exp
HFNPRF	817.4	817.3
NHRVKKL	894.6	894.5
CNTKLDNNW	1107.5	1107.4
DFQRGNDVAF	1168.5	1168.6
QRGNDVAFHF	1190.6	1190.4
KIQVLVEPDHF	1324.7	1324.6
GREERQSVFPF	1351.7	1351.6
NLPLPGGVPRML	1362.8	1362.7
KVAVNDAHLLQY	1370.7	1370.6
NHRVKKLNEISKL	1578.9	1578.8
SGDIDLTSASYTMIF <sup>2</sup>	1636.7	1636.6
ITILGTVKPNANRIAL	1694.0	1693.9
HFNPRFNENRRVI	1812.9	1812.8
VPYNLPLPGGVPRMLI	1835.1	1834.7
DNNWGREERQSVFPF	1880.9	1880.7
HFNPRFNENRRVIV	1912.0	1911.8
GREERQSVFPFESGKPF	1997.0	1996.8
CNTKLDNNWGREERQSV	2049.0	2048.8
GAPAGPLIVPYNLPLPGGVPRM <sup>2</sup>	2301.3	2300.9
DNNWGREERQSVFPFESGKPF	2526.2	2526.0
ELTEISRENVKSGTPQLGAPAGPL	2561.4	2561.1
DNNWGREERQSVFPFESGKPKI	2767.4	2767.1
TEISRENVKSGTPQLGAPAGPLIVPY	2791.5	2791.2
ELTEISRENVKSGTPQLGAPAGPLIVPY	3033.6	3033.3

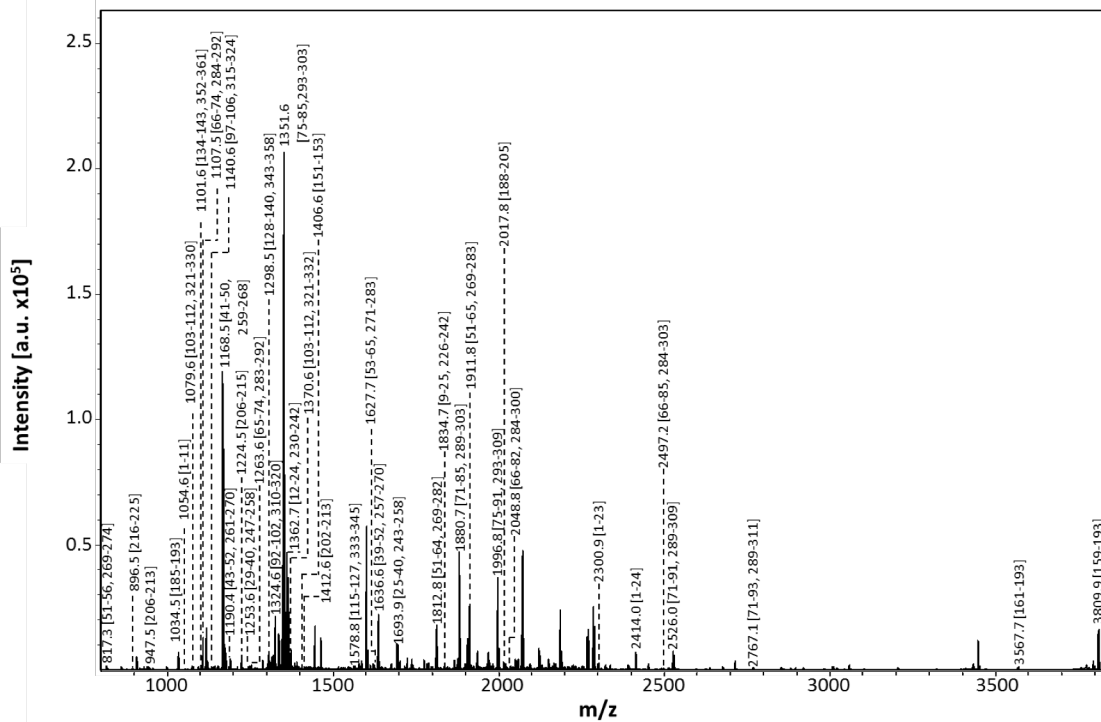
<sup>1</sup> carbamidomethylation at C; <sup>2</sup> oxidation at M

# Gal-3—8L—Gal-3

A



B



C

Sequence coverage (PMF)

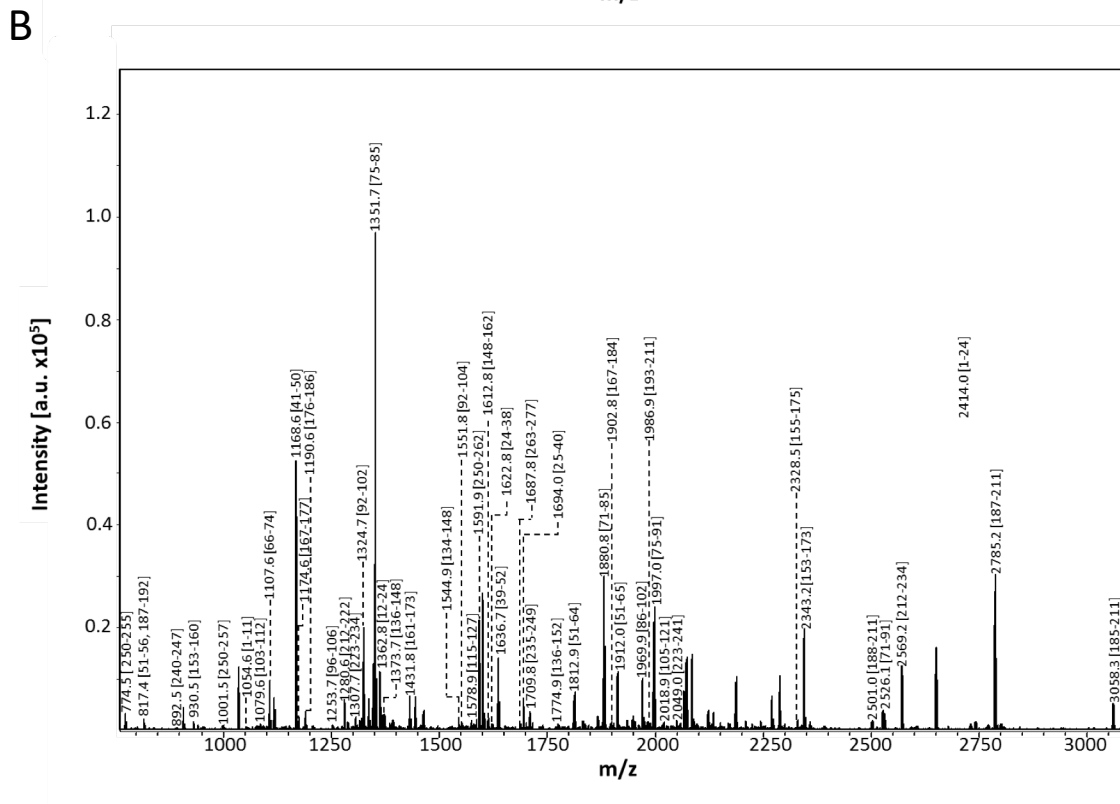
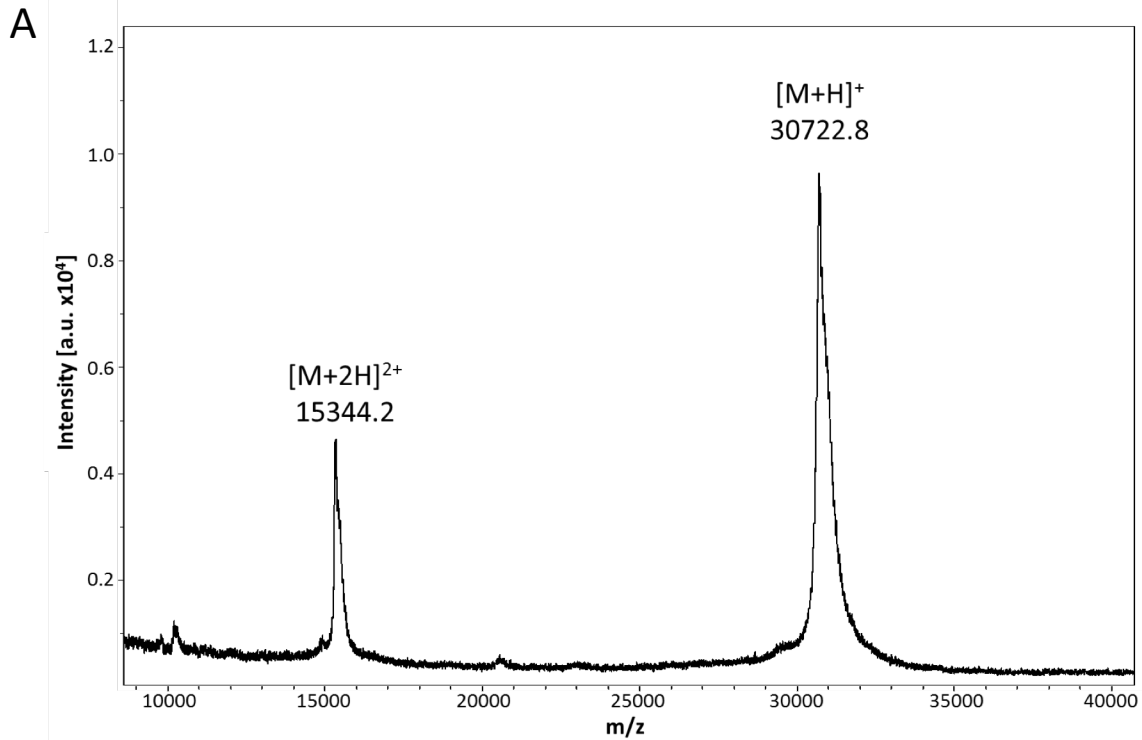
GAPAGPLIVPYNLPLPGGVVPRMLITILGTVKPNANRIALDFQRGNDVAFHFNPRFNENRRRVIVCNTKLDNN  
 WGREERQSVFPFESGKPFKIQLVEPDHFKVAVNDAHLLQYNHRVKKLNEISKLGISGDIDLTSASYTMIFSSF  
 DLQSTQASSLELTEISRENVPKSGTPQLPSNRGGDISKIAPRTVYTKSKDSTVNHTLTCTKIPPMNYVSKGAPAG  
 PLIVPYNLPLPGGVVPRMLITILGTVKPNANRIALDFQRGNDVAFHFNPRFNENRRRVIVCNTKLDNNWGEE  
 RQSVFPFESGKPFKIQLVEPDHFKVAVNDAHLLQYNHRVKKLNEISKLGISGDIDLTSASYTMI

**Peptide mass fingerprinting of Gal-3—8L—Gal-3 by MALDI-TOF-MS. The list of detected peptides with their calculated (calc) and experimentally measured (exp) mass values**

Sequence	[MH] <sup>+</sup> (mono) calc	[MH] <sup>+</sup> (mono) exp
HFNPRF	817.4	817.3
VSKGAPAGPL	896.5	896.5
TCTKIPPM <sup>1</sup>	947.5	947.5
SKIAPRTVY	1034.6	1034.5
GAPAGPLIVPY	1054.6	1054.5
KVAVNDAHLL	1079.6	1079.5
DLTSASYTMI	1101.5	1101.6
CNTKLDNNW	1107.5	1107.5
VEPDHFKVAV	1140.6	1140.6
DFQRGNDVAF	1168.5	1168.5
QRGNDVAFHF	1190.6	1190.4
TCTKIPPMNY <sup>1</sup>	1224.6	1224.5
GTVKPNANRIAL	1253.7	1253.6
VCNTKLDNNW <sup>1</sup>	1263.6	1263.6
GISGDIDLTSASY	1298.6	1298.5
KIQVLVEPDHF	1324.7	1324.6
GREERQSVFPF	1351.7	1351.6
NLPLPGGVVPRML	1362.8	1362.7
KVAVNDAHLLQY	1370.7	1370.6
QSTQASSLELLEI	1406.7	1406.6
NHTLTCTKIPPM <sup>1</sup>	1412.7	1412.6
NHRVKKLEISKL	1578.9	1578.8
NPRFNENRRRIV	1627.9	1627.7
SGDIDLTSASYTMIF <sup>2</sup>	1636.7	1636.6
ITILGTVKPNANRIAL	1694.0	1693.9
HFNPRFNENRRRVI	1812.9	1812.8
VPYNLPLPGGVVPRMLI	1835.1	1834.7
DNNWGREERQSVFPF	1880.9	1880.7
HFNPRFNENRRRIV	1912.0	1911.8
GREERQSVFPFESGKPF	1997.0	1996.8
APRTVYTKSKDSTVNHTL	2018.1	2017.9
CNTKLDNNWGREERQSV	2049.0	2048.8
GAPAGPLIVPYNLPLPGGVVPRM <sup>2</sup>	2301.3	2300.9
GAPAGPLIVPYNLPLPGGVVPRML <sup>2</sup>	2414.4	2414.0
CNTKLDNNWGREERQSVFPF <sup>1</sup>	2497.2	2497.0
DNNWGREERQSVFPFESGKPF	2526.2	2526.0
DNNWGREERQSVFPFESGKPKI	2767.4	2767.1
TEISRENVKSGTPQLPSNRGGDISKIAPRTVY	3567.9	3567.7
ELTEISRENVKSGTPQLPSNRGGDISKIAPRTVY	3810.0	3809.9

<sup>1</sup> carbamidomethylation at C; <sup>2</sup> oxidation at M

# Gal-3—Gal-1



**C**

Sequence coverage (PMF)

```

GAPAGLIVPYNLPLPGGVVPRMLITILGTVKPNANRIALDFQRGNDVAFHFNPRFNENRRRIVVCNTKLDNN
WGREERQSVFPFESGKPFKIQVLVEPDHFKVAVNDAHLLQYNHRVKKLNEISKLGISGDIDLTSASYTMIACGLV
ASNLNLKPGDECLVRGEVAPDAKSFVNLNGKDSNNLCLHFNPRFNAHGDAANTIVCNSKDGGAWGTEQREAVF
PFQPGSVAEVCITFDQANLTVKLPDGYEFKFPNRLNLEAINYMAADGDFKIKCVAFD
    
```

**Peptide mass fingerprinting of Gal-3—Gal-1 by MALDI-TOF-MS. The list of detected peptides with their calculated (calc) and experimentally measured (exp) mass values**

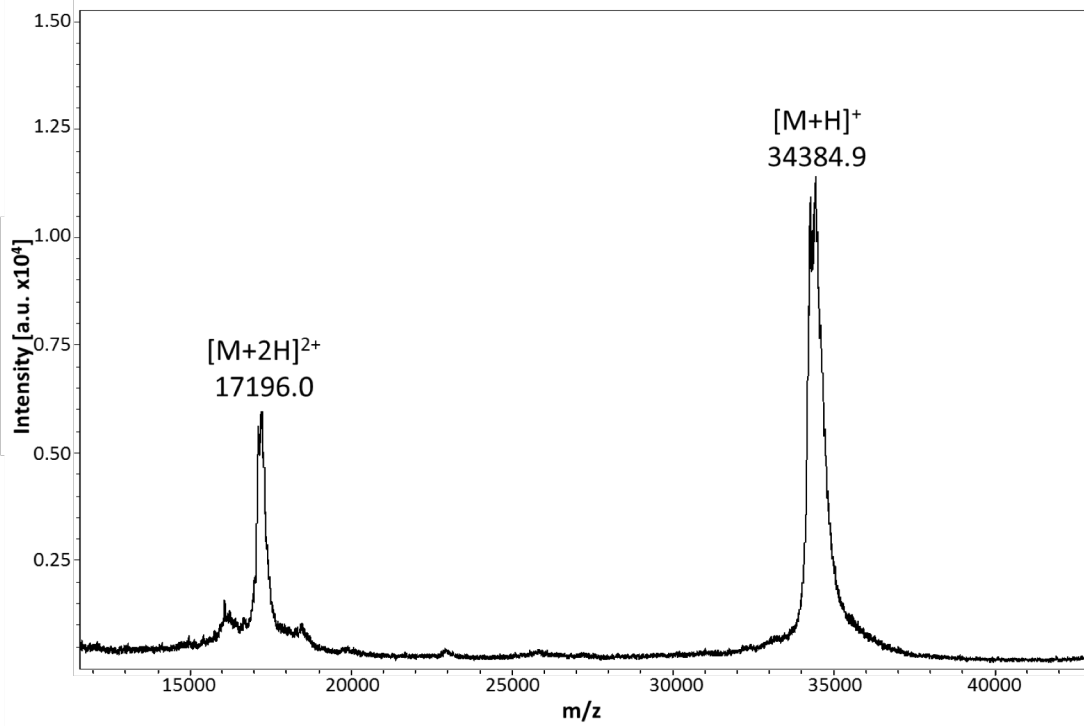
Sequence	[MH] <sup>+</sup> (mono) calc	[MH] <sup>+</sup> (mono) exp
KFPNRL	774.5	774.5
HFNPRF	817.4	817.4
TVKLPDGY	892.5	892.5
NLKPGECL <sup>1</sup>	930.5	930.5
KFPNRLNL	1001.6	1001.5
GAPAGPLIVPY	1054.6	1054.6
KVAVNDAHLL	1079.6	1079.6
CNTKLDNNW	1107.5	1107.6
DFQRGNDVAF	1168.5	1168.6
APDAKSFVLNL	1174.6	1174.6
NLGKDSNNLCL	1190.6	1190.6
LVEPDHFKVAV	1253.7	1253.7
GTEQREAVFPF	1280.6	1280.6
QPGSVAEVCITF <sup>1</sup>	1307.6	1307.7
KIQVLVEPDHF	1324.7	1324.7
GREERQSVFPF	1351.7	1351.7
NLPLPGGVVPRML	1362.8	1362.8
TSASYTMIACGLV <sup>1</sup>	1373.6	1373.7
RVRGEVAPDAKSF	1431.8	1431.8
DLTSASYTMIACGLV	1544.7	1544.9
KIQVLVEPDHFKV	1551.9	1551.8
NHRVKKLNEISKL	1578.9	1578.9
KFPNRLNLEAINY	1591.9	1591.9
VASNLNLKPGECLRV	1612.9	1612.8
LITILGTVKPNANRI	1623.0	1622.8
ALDFQRGNDVAFHF	1636.8	1636.7
MAADGDFKIKCVAFD <sup>1</sup>	1687.8	1687.8
ITILGTVKPNANRIAL	1694.0	1694.0
DQANLTVKLPDGYEF	1709.8	1709.8
TSASYTMIACGLVASNL <sup>1,2</sup>	1774.8	1774.9
HFNPRFNENRRVI	1812.9	1812.9
DNNWGREERQSVFPF	1880.9	1880.8
APDAKSFVLNLGKDSNNL	1903.0	1902.8
HFNPRFNENRRVIV	1912.0	1912.0
ESGKPFKIQVLVEPDHF	1970.0	1969.9
NAHGDANTIVCNSKDGGAW <sup>1</sup>	1986.9	1986.9
GREERQSVFPFESGKPF	1997.0	1997.0
AVNDAHLLQYNHRVKKL	2019.1	2018.9
QPGSVAEVCITFDQANLTV <sup>1</sup>	2049.0	2049.0
KPGECLRVGEVAPDAKSFV <sup>1</sup>	2328.2	2328.5
NLKPGECLRVGEVAPDAKSF <sup>1</sup>	2343.2	2343.2
NPRFNAHGDANTIVCNSKDGGAW <sup>1</sup>	2501.1	2501.0
DNNWGREERQSVFPFESGKPF	2526.2	2526.1
GTEQREAVFPFQPGSVAEVCITF <sup>1</sup>	2569.2	2569.2
HFNPRFNAHGDANTIVCNSKDGGAW <sup>1</sup>	2785.3	2785.2
CLHFNPRFNAHGDANTIVCNSKDGGAW <sup>1</sup>	3058.4	3058.3

<sup>1</sup> carbamidomethylation at C; <sup>2</sup> oxidation at M

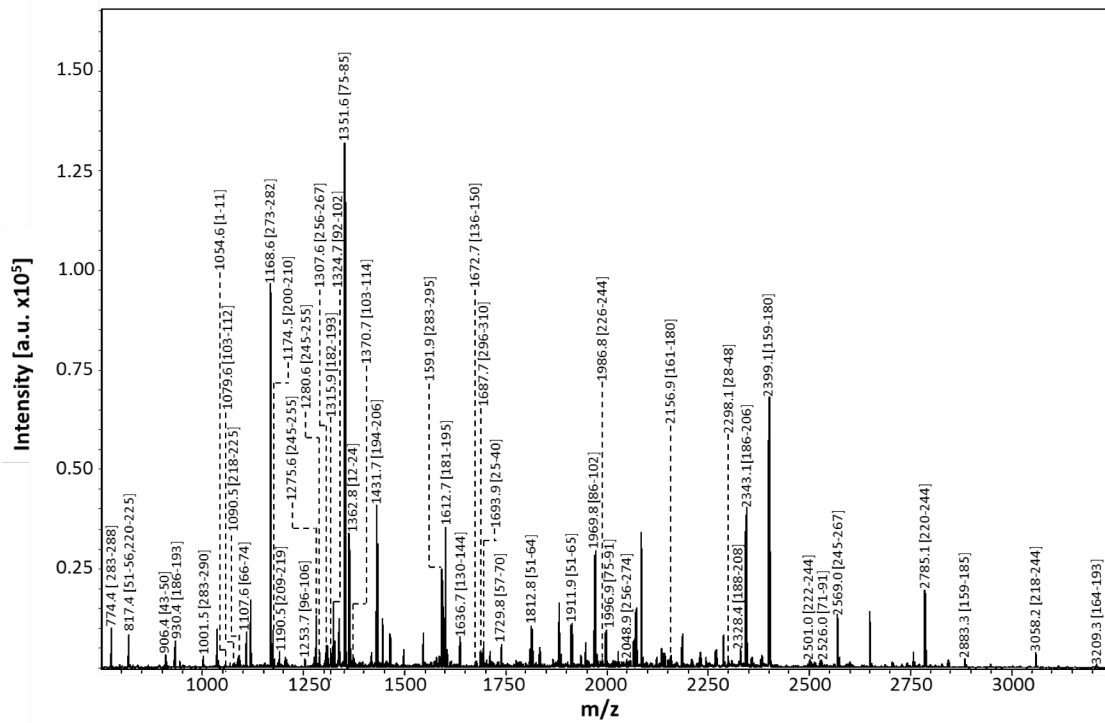


# Gal-3—8S—Gal-1

A



B



Sequence coverage (PMF)

C

GAPAGPLIVPYNLPLPGGVPRMLITILGTVKPNANRIALDFQRGNDVAFHFNPRFNENRRRIVVCNTKLDNNW  
 GREERQSVFPFESGKPFKIQLVEPDHFKVAVNDAHLLQYNHRVKKLNEISKLGISGDIDLTASAYTMIFSFSSDLQS  
 TQASSLELTEISRENVPKSGTPQLACGLVASNLNKPGECLRVRGEVAPDAKSFVNLNGKDSNNLCLHFNPRFNAH  
 GDANTIVCNSKDGGAWGTEQREAVFPFQPGSVAEVCITFDQANLTVKLPDGYEFKFPNRLNLEAINYMAADGD  
 FKIKCVAFD

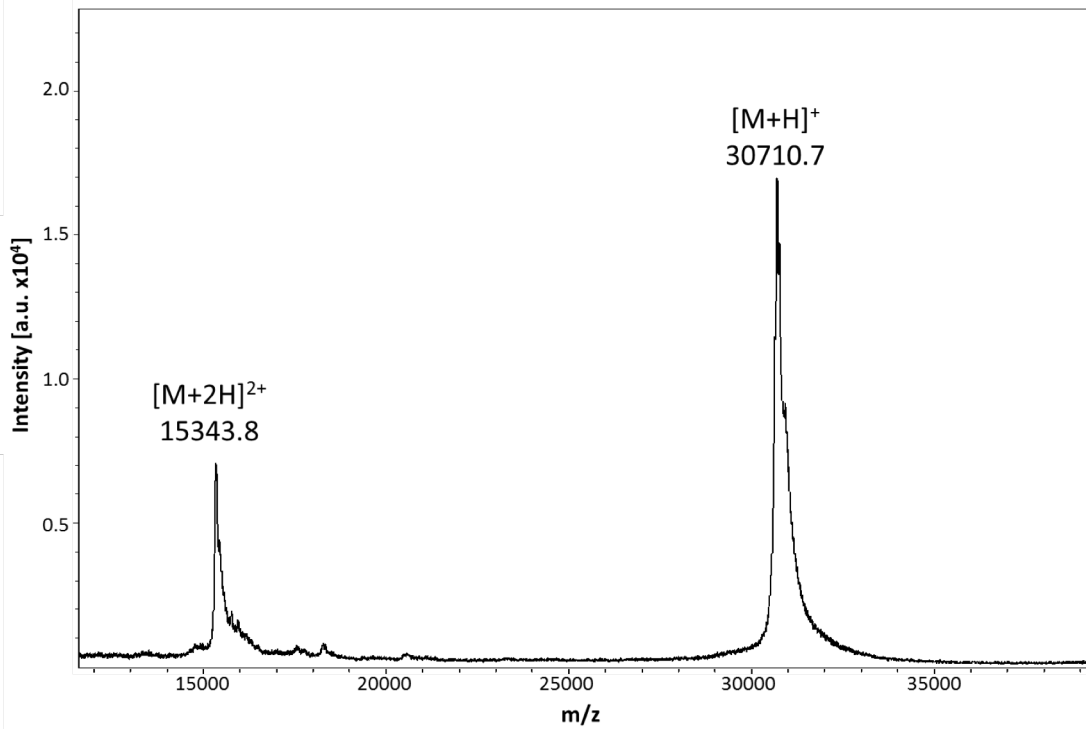
Peptide mass fingerprinting of Gal-3—8S—Gal-1 by MALDI-TOF-MS. The list of detected peptides with their calculated (calc) and experimentally measured (exp) mass values

Sequence	[MH] <sup>+</sup> (mono) calc	[MH] <sup>+</sup> (mono) exp
KFPNRL	774.5	774.4
HFNPRF	817.4	817.4
QRGNDVAF	906.4	906.4
NLKPGECL <sup>1</sup>	930.4	930.4
KFPNRLNL	1001.6	1001.5
GAPAGPLIVPY	1054.6	1054.6
KVAVNDAHLL	1079.6	1079.6
CLHFNPRF <sup>1</sup>	1090.5	1090.5
CNTKLDNNW	1107.5	1107.5
TVKLPDGYEF	1168.6	1168.5
APDAKSFVLNL	1174.6	1174.5
NLGKDSNNLCL	1190.6	1190.5
LVEPDHFQVAV	1253.7	1253.7
RGEVAPDAKSFV	1275.7	1275.6
GTEQREAVFPF	1280.6	1280.6
QPGSVAEVCITF <sup>1</sup>	1307.6	1307.6
ASNLNLKPGECL <sup>1</sup>	1315.7	1315.9
KIQVLVEPDHF	1324.7	1324.7
GREERQSVFPF	1351.7	1351.6
NLPLPGGVPRML	1362.8	1362.7
KVAVNDAHLLQY	1370.7	1370.7
RVRGEVAPDAKSF	1431.8	1431.7
KFPNRLNLEAINY	1591.9	1591.8
VASNLNLKPGECLRV	1612.9	1612.7
SGDIDLTSADYTMIF <sup>2</sup>	1636.8	1636.7
TSASYTMIFSFSDL <sup>2</sup>	1672.9	1672.7
MAADGDFKIKCVAFD	1687.8	1687.7
ITILGTVKPNANRIAL	1694.0	1693.9
NENRRRIVCNTKL <sup>1</sup>	1729.9	1729.8
HFNPRFNENRRVI	1812.9	1812.8
HFNPRFNENRRVIV	1912.0	1911.9
ESGKPFKIQVLVEPDHF	1970.0	1969.8
NAHGDANTIVCNSKDGGAW <sup>1</sup>	1986.9	1986.8
GREERQSVFPFESGKPF	1997.0	1996.9
QPGSVAEVCITFDQANLTV <sup>1</sup>	2049.0	2048.9
ELTEISRENVPKSGTPQLACGL <sup>1</sup>	2157.1	2156.9
LGTVKPNANRIALDFQRGNDV	2298.2	2298.1
KPGECLRVGEVAPDAKSFV <sup>1</sup>	2328.2	2328.4
NLKPGECLRVGEVAPDAKSF <sup>1</sup>	2343.2	2343.1
ELTEISRENVPKSGTPQLACGL <sup>1</sup>	2399.2	2399.1
NPRFNAHGDANTIVCNSKDGGAW <sup>1</sup>	2501.1	2501.0
DNNWGREERQSVFPFESGKPF	2526.2	2526.0
GTEQREAVFPFQPGSVAEVCITF <sup>1</sup>	2569.2	2569.0
HFNPRFNAHGDANTIVCNSKDGGAW <sup>1</sup>	2785.4	2785.1
ELTEISRENVPKSGTPQLACGLVASNL <sup>1</sup>	2883.5	2883.3
CLHFNPRFNAHGDANTIVCNSKDGGAW <sup>1</sup>	3058.3	3058.2
SRENVPKSGTPQLACGLVASNLNLKPGECL <sup>1</sup>	3209.6	3209.3

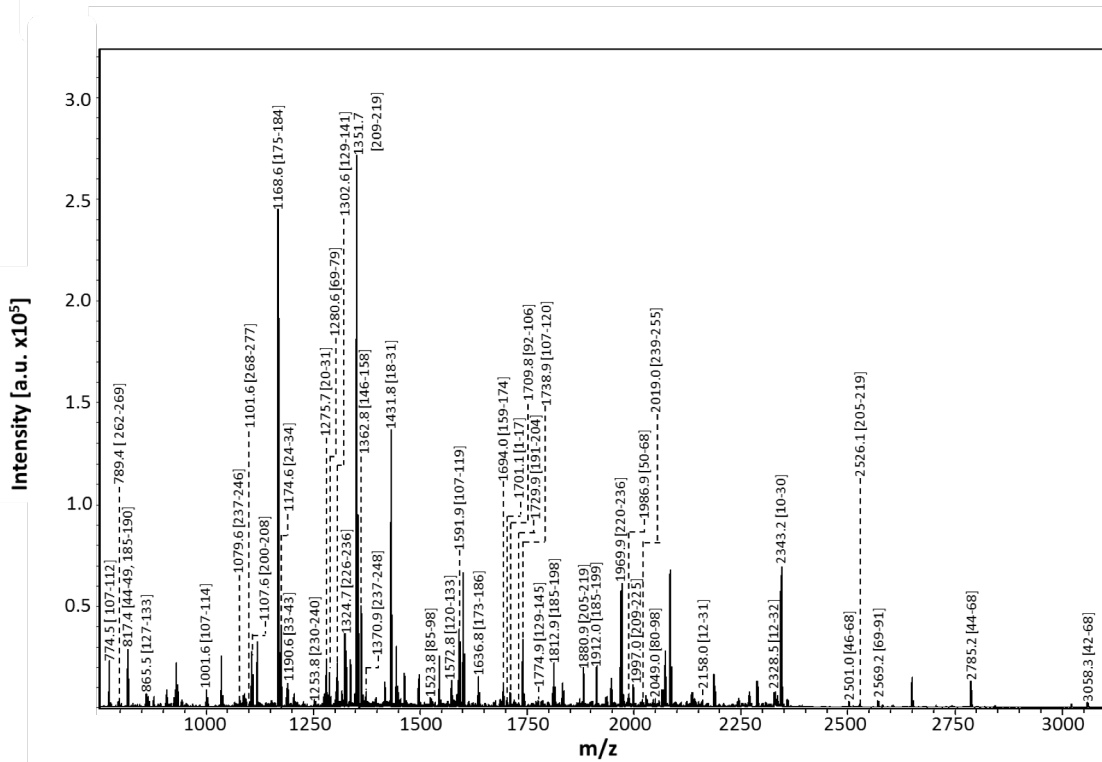
<sup>1</sup> carbamidomethylation at C; <sup>2</sup> oxidation at M

# Gal-1—Gal-3

A



B



Sequence coverage (PMF)

C

ACGLVASNLNLKPGECLRVRGEVAPDAKSFVLNLGKDSNNLCLHFNPRFNAHGDANTIVCNSKDGGAWGTEQRE  
 AVFPFQPGSVAEVCITFDQANLTVKLPDGYEFKPNRLNLEAINYMAADGDFKIKCVAFDGPAGPLIVPYNLPLPG  
 GVVPRMLITILGTVKPNANRIALDFQRGNDVAFHFNPRFNENRRRIVCNTKLDNNWGREERQSVFPFESGKPKFI  
 QVLVEPDHFKVAVNDAHLLQYNHRVKKLNEISKLGISGDIDLTSASYTMI

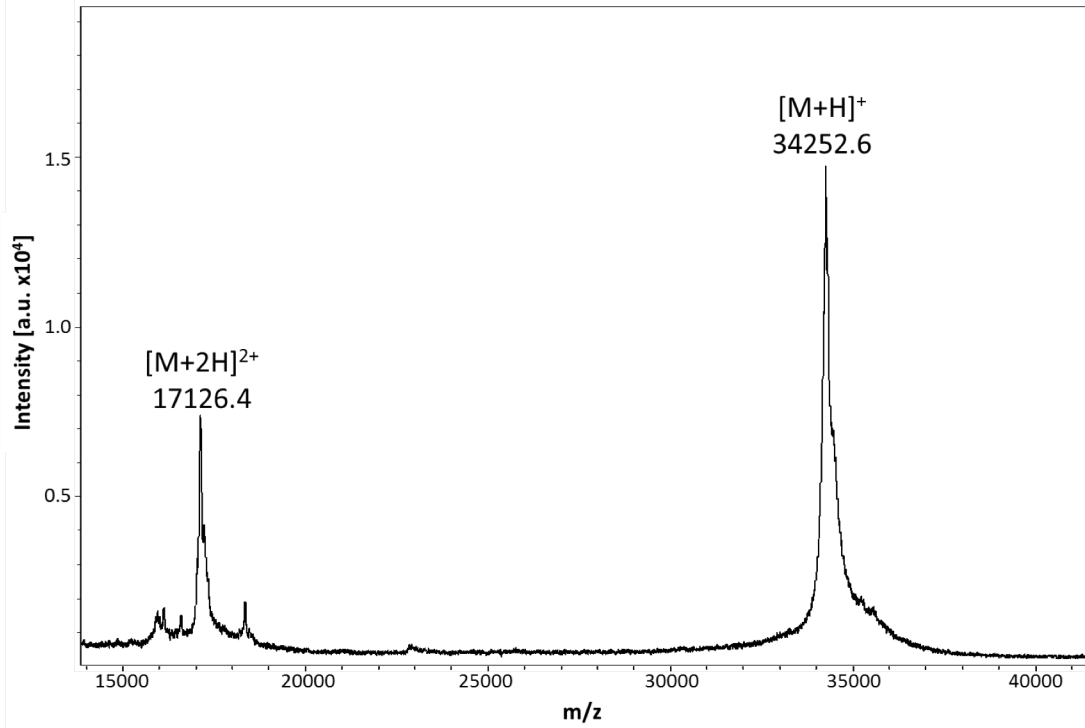
**Peptide mass fingerprinting of Gal-1—Gal-3 by MALDI-TOF-MS. The list of detected peptides with their calculated (calc) and experimentally measured (exp) mass values**

Sequence	[MH] <sup>+</sup> (mono) calc	[MH] <sup>+</sup> (mono) exp
KFPNRL	774.5	774.5
GISGDIDL	789.4	789.4
HFNPRF	817.4	817.4
KIKCVAF <sup>1</sup>	865.5	865.5
KFPNRLNL	1001.6	1001.6
KVAVNDAHLL	1079.6	1079.6
DLTSASYTMI	1101.5	1101.6
CNTKLDNNW	1107.5	1107.6
DFQRGNDVAF	1168.5	1168.6
APDAKSFVNL	1174.6	1174.6
NLGKDSNNLCL	1190.6	1190.6
LVEPDHFKVAV	1253.7	1253.8
RGEVAPDAKSFV	1275.7	1275.7
GTEQREAVFPF	1280.6	1280.6
KCVAFDGGAPAGPL <sup>1</sup>	1302.7	1302.6
KIQVLVEPDHF	1324.7	1324.7
GREERQSVFPF	1351.7	1351.7
NLPLPGGVVPRML	1362.8	1362.8
KVAVNDAHLLQY	1370.6	1370.8
RVRGEVAPDAKSF	1431.8	1431.8
AEVCITFDQANLTV	1523.8	1523.8
MAADGDFKIKCVAF <sup>1</sup>	1572.8	1572.8
EPDHFKVAVNDAHL	1591.9	1591.9
ALDFQRGNDVAFHF	1636.8	1636.8
ITILGTVKPNANRIAL	1694.0	1694.0
ACGLVASNLNLKPGECL	1701.8	1701.8
DQANLTVKLPDGYEF	1709.8	1709.8
NENNRVIVCNTKL <sup>1</sup>	1729.9	1729.9
KFPNRLNLEAINYM <sup>2</sup>	1738.9	1738.9
KCVAFDGGAPAGPLIVPY <sup>1</sup>	1774.9	1774.9
HFNPRFNENNRVI	1812.9	1812.9
DNNWGREERQSVFPF	1880.9	1880.9
HFNPRFNENNRVIV	1912.0	1912.0
ESGKPFKIQVLVEPDHF	1970.0	1969.9
NAHGDANTIVCNSKGGAW <sup>1</sup>	1986.9	1986.9
GREERQSVFPFESGKPF	1997.0	1997.0
AVNDAHLLQYNHRVKKL	2019.1	2019.0
QPGSVAEVCITFDQANLTV <sup>1</sup>	2049.0	2049.0
KPGECLRVGEVAPDAKSFV	2158.1	2158.0
KPGECLRVGEVAPDAKSFV <sup>1</sup>	2328.2	2328.5
NLKPGECLRVGEVAPDAKSF <sup>1</sup>	2343.2	2343.2
NPRFNAHGDANTIVCNSKGGAW <sup>1</sup>	2501.1	2501.1
DNNWGREERQSVFPFESGKPF	2526.2	2526.1
GTEQREAVFPFQPGSVAEVCITF <sup>1</sup>	2569.2	2569.2
HFNPRFNAHGDANTIVCNSKGGAW <sup>1</sup>	2785.3	2785.2
CLHFNPRFNAHGDANTIVCNSKGGAW <sup>1</sup>	3058.4	3058.3

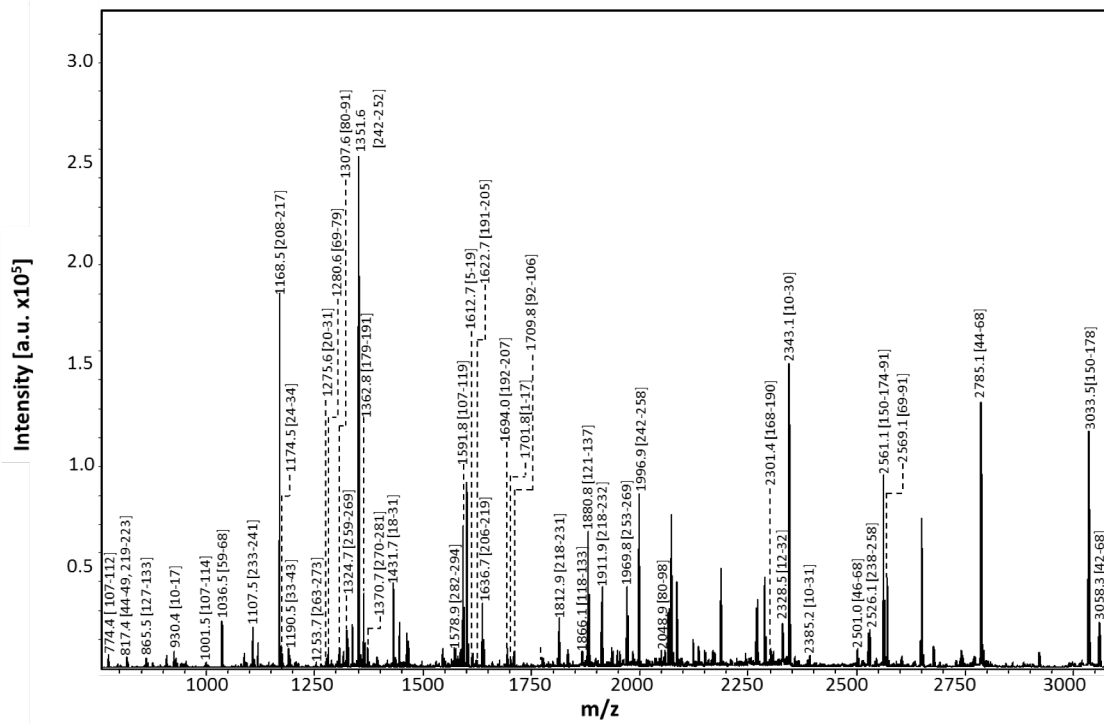
<sup>1</sup> carbamidomethylation at C; <sup>2</sup> oxidation at M

# Gal-1—8S—Gal-3

A



B



Sequence coverage (PMF)

C

ACGLVASNLNLKPGECLEVRGEVAPDAKSFVLNLGKDSNNLCLHFNPRFNAHGDANTIVCNSKDGG  
 WGTEQREAVFPFQPGSVAEVCITFDQANLTVKLPDGYEFKFPNRLNLEAINYMAADGDFKIKVAFDFS  
 FSSDLQSTQASSLELTEISRENVPKSGTPQLGAPAGPLIVPYNLPLPGGVVPRMLITILGTVKPNANRIALD  
 FQRGNDVAFHFNPRFNENRRRIVCNTKLDNNWGREERQSVFPFESGKPFKIQVLVEPDHFKVAVND  
 AHLQYNHRVKKLNEISKLGISGDIDLTSASYTMI

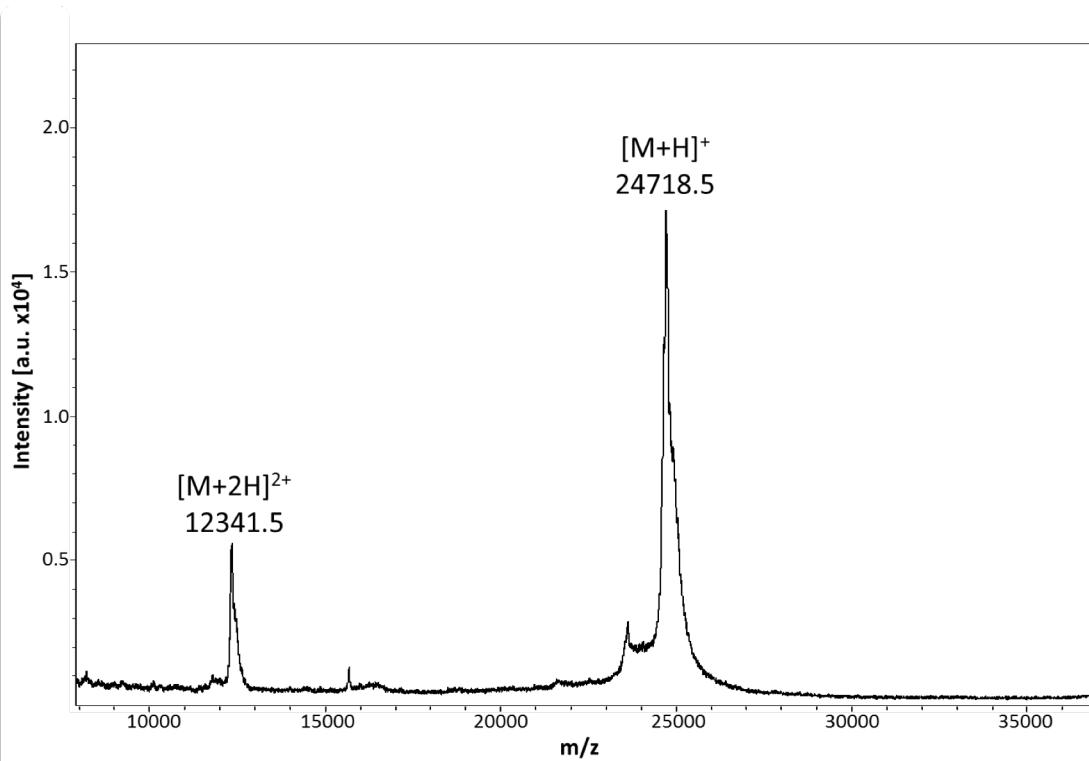
**Peptide mass fingerprinting of Gal-1—8S—Gal-3 by MALDI-TOF-MS. The list of detected peptides with their calculated (calc) and experimentally measured (exp) mass values**

Sequence	[MH] <sup>+</sup> (mono) calc	[MH] <sup>+</sup> (mono) exp
KFPNRL	774.5	774.4
HFNPRF	817.4	817.4
KIKCVAF <sup>1</sup>	865.5	865.5
NLKPGECL <sup>1</sup>	930.4	930.4
KFPNRLNL	1001.6	1001.5
VCNSKDGGAW	1036.5	1036.5
CNTKLDNNW	1107.5	1107.5
DFQRGNDVAF	1168.6	1168.5
APDAKSFVLNL	1174.6	1174.5
NLGKDSNNLCL	1190.6	1190.5
LVEPDHFKVAV	1253.7	1253.7
RGEVAPDAKSFV	1275.7	1275.6
GTEQREAVFPF	1280.6	1280.6
QPGSVAEVCITF <sup>1</sup>	1307.6	1307.6
KIQVLVEPDHF	1324.7	1324.7
GREERQSVFPF	1351.7	1351.6
NLPLPGGVPRML	1362.8	1362.8
KVAVNDAHLLQY	1370.7	1370.7
RVRGEVAPDAKSF	1431.8	1431.7
NHRVKKLNEISKL	1578.9	1578.9
KFPNRLNLEAINY	1591.9	1591.8
VASNLNLKPGECLRV	1612.9	1612.7
LITILGTVKPNANRI	1623.0	1622.7
ALDFQRGNDVAFHF	1636.8	1636.7
ITILGTVKPNANRIAL	1694.0	1694.0
ACGLVASNLNLKPGECL	1701.9	1701.8
DQANLTVKLPDGYEF	1709.8	1709.8
HFNPRFNENRRVI	1812.9	1812.9
NYMAADGDFKIKCVAF <sup>1,2</sup>	1865.8	1866.1
AADGDFKIKCVAFDFSF	1880.9	1880.8
HFNPRFNENRRVIV	1912.0	1911.9
ESGKPFKIQVLVEPDHF	1970.0	1969.8
GREERQSVFPFESGKPF	1997.0	1996.9
QPGSVAEVCITFDQANLTV <sup>1</sup>	2049.0	2048.9
GAPAGPLIVPYNLPLPGGVPRM <sup>2</sup>	2301.3	2301.4
KPGECLRVRGEVAPDAKSFV <sup>1</sup>	2328.2	2328.5
NLKPGECLRVRGEVAPDAKSF <sup>1</sup>	2343.2	2343.1
NLKPGECLRVRGEVAPDAKSFV	2385.3	2385.2
NPRFNAHGDANTIVCNSKDGGAW <sup>1</sup>	2501.1	2501.0
DNNWGREERQSVFPFESGKPF	2526.2	2526.1
ELTEISRENVKSGTPQLGAPAGPL	2561.4	2561.1
GTEQREAVFPFQPGSVAEVCITF <sup>1</sup>	2569.2	2569.1
HFNPRFNAHGDANTIVCNSKDGGAW <sup>1</sup>	2785.4	2785.1
ELTEISRENVKSGTPQLGAPAGPLIVPY	3033.6	3033.5
CLHFNPRFNAHGDANTIVCNSKDGGAW <sup>1</sup>	3058.3	3058.3

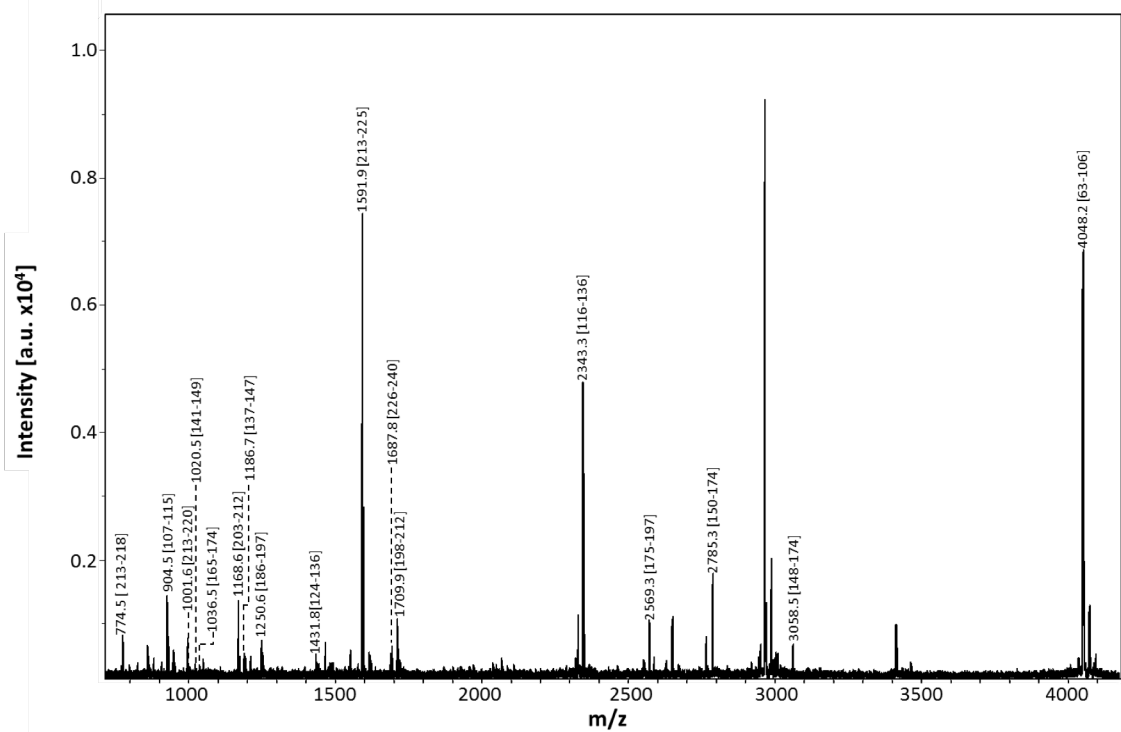
<sup>1</sup> carbamidomethylation at C; <sup>2</sup> oxidation at M

# Gal-3NT/1

A



B



Sequence coverage (PMF)

C

ADNFSLHDALSGSNPNPQGWPGAWGNQAGAGGYPGASYPGAYPGQAPPAYPGQAPPGAYHGAPG  
 AYPGAPAGVYPGPPSPGAYPSSGQPSAPGAYPATGPYACGLVASNLNLKPGCELRVGEVAPDAKSFVLN  
 LGKDSNNLCLHFNPRFNAHGDANTIVCNSKDGGAWGTEQREAVFPFQPGSVAEVCITFDQANLTVKLPDGY  
 EFKFPNRLNLEAINYMAADGDFKIKCVAFD

Peptide mass fingerprinting of Gal-3NT/1 by MALDI-TOF-MS. The list of detected peptides with their calculated (calc) and experimentally measured (exp) mass values

Sequence	[MH] <sup>+</sup> (mono) calc	[MH] <sup>+</sup> (mono) exp
KFPNRL	774.5	774.5
ACGLVANSL <sup>1</sup>	904.5	904.5
KFPNRLNL	1001.6	1001.6
GKDSNNCL <sup>1</sup>	1020.5	1020.5
VCNSKDGGAW	1036.5	1036.5
TVKLPDGYEF	1168.6	1168.6
VLNLGKDSNNL	1186.6	1186.7
QPGSVAEVCITF	1250.6	1250.6
RVRGEVAPDAKSF	1431.8	1431.8
KFPNRLNLEAINY	1591.8	1591.9
MAADGDFKIKCVAFD <sup>1</sup>	1687.8	1687.8
DQANLTVKLPDGYEF	1709.8	1709.9
NLKPGECLRVRGEVAPDAKSF <sup>1</sup>	2343.2	2343.3
GTEQREAVFPFQPGSVAEVCITF <sup>1</sup>	2569.2	2569.3
HFNPRFNAHGDANTIVCNSKDGGAW <sup>1</sup>	2785.3	2785.3
CLHFNPRFNAHGDANTIVCNSKDGGAW <sup>1</sup>	3058.4	3058.5
HGAPGAYPGAPAGVYPGPPSGGAYPSSGQPSAPGAYPATGPY	4047.9	4048.2

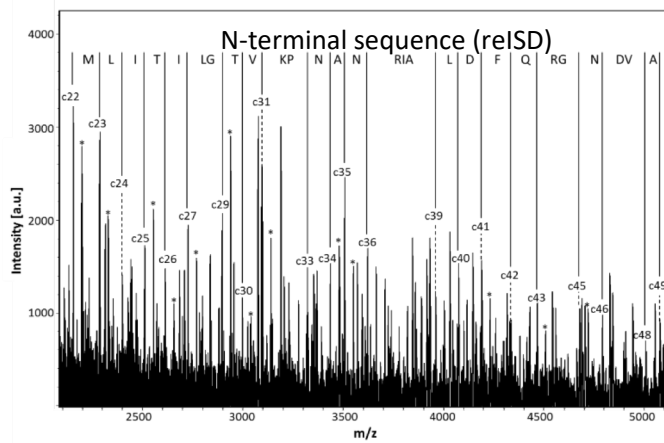
<sup>1</sup> carbamidomethylation at C



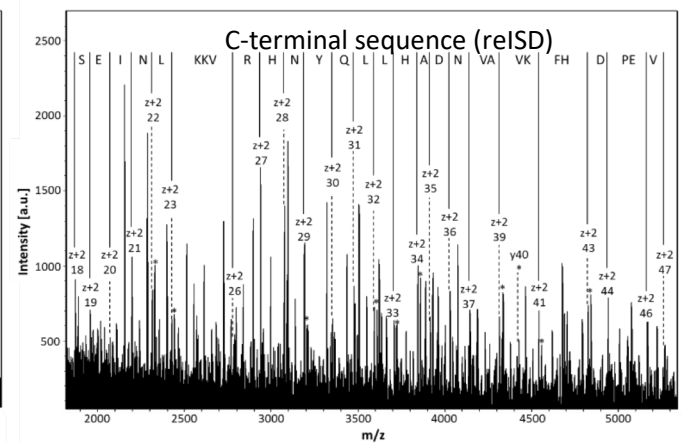
# Spectra of N-/C-terminal sequencing by reISD, N-terminal sequencing by linISD, and listing of the detected ions for each analyzed protein and used matrix

Gal-3—Gal-3

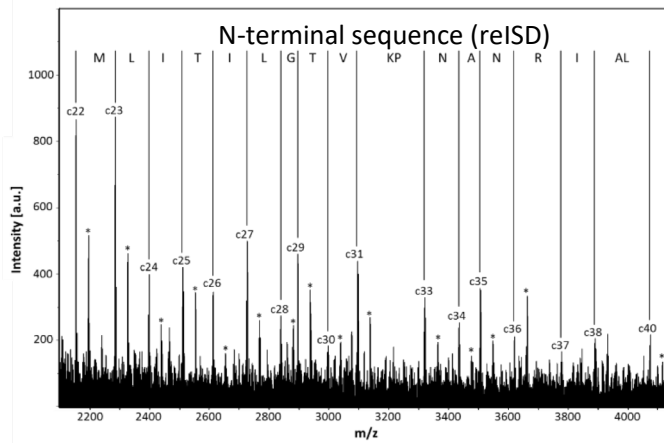
A



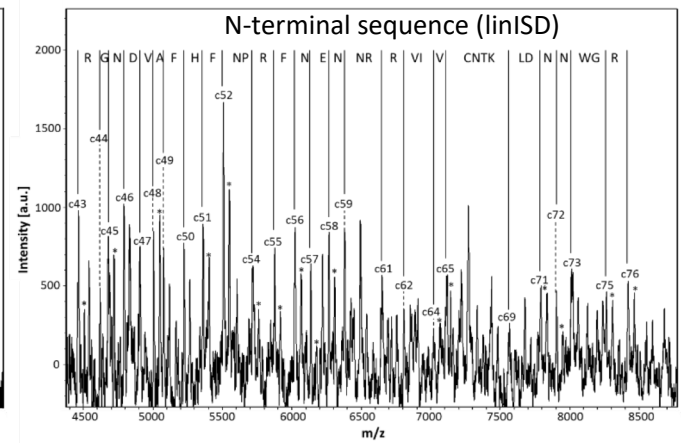
B



C



D



Calculated and experimental masses of c-ions observed in the reISD spectra for Gal-3—Gal-3 with sDHB.

c-ions	No modifications		N-terminal acetylation	
	[MH] <sup>+</sup> (mono) calc	[MH] <sup>+</sup> (mono) exp	[MH] <sup>+</sup> (mono) calc	[MH] <sup>+</sup> (mono) exp
c11	1053.6	1053.7	1095.6	.*
c12	1167.6	1167.7	1209.7	.*
c13	1280.7	.*	1322.7	.*
c14	1377.8	1377.8	1419.8	.*
c15	1490.9	.*	1532.9	.*
c16	1587.9	.*	1629.9	.*
c17	1644.9	1644.9	1687.0	.*
c18	1702.0	1702.1	1744.0	.*
c19	1801.0	.*	1843.0	.*
c20	1900.1	.*	1942.1	.*
c21	1997.2	.*	2039.2	.*
c22	2153.2	2153.3	2195.3	2195.3
c23	2284.3	2284.3	2326.3	2326.2
c24	2397.4	2397.5	2439.4	.*
c25	2510.5	2510.5	2552.5	2552.5
c26	2611.5	2611.5	2653.5	2653.5
c27	2724.6	2724.6	2766.6	2766.7
c28	2837.7	.*	2879.7	2879.7
c29	2894.7	2894.7	2936.7	2936.7
c30	2995.8	2996.0	3037.8	.*
c31	3094.8	3094.9	3136.8	3137.1
c32	3222.9	.*	3264.9	.*
c33	3320.0	3320.2	3362.0	3362.0
c34	3434.0	3434.1	3476.0	.*
c35	3505.0	3505.2	3547.0	3547.1
c36	3619.1	3619.3	3661.1	.*
c37	3775.2	3775.6	3817.2	.*
c38	3888.3	3888.4	3930.3	3930.2
c39	3959.3	3959.2	4001.3	4001.5
c40	4072.4	.*	4114.4	4114.6
c41	4187.4	4187.6	4229.4	.*
c42	4334.5	4334.9	4376.5	4377.0
c43	4462.6	4463.0	4504.6	.*
c44	4618.6	4619.3	4660.7	.*
c45	4675.7	4676.1	4717.7	.*
c46	4789.7	4790.3	4831.7	.*
c47	4904.7	.*	4946.8	.*
c48	5003.8	5004.5	5045.8	.*
c49	5074.8	5074.5	5116.9	.*
c50	5221.9	5222.7	5263.9	.*
c51	5359.0	5359.8	5401.0	.*
c52	5506.0	5506.4	5548.0	.*

\*c-ions not observed

Calculated and experimental masses of z+2-ions observed in the reISD spectra for Gal-3—Gal-3.

z+2-ions	[MH] <sup>+</sup> (mono) calc	[MH] <sup>+</sup> (mono) exp
z+2 18	1870.0	1870.0
z+2 19	1957.0	1956.9
z+2 20	2070.1	2070.2
z+2 21	2199.1	2198.5
z+2 22	2313.2	2313.3
z+2 23	2426.2	2426.0
z+2 24	2554.3	-*
z+2 25	2682.4	-*
z+2 26	2781.5	2781.5
z+2 27	2937.6	2937.9
z+2 28	3074.6	3074.7
z+2 29	3188.7	3188.8
z+2 30	3351.8	3351.8
z+2 31	3479.8	3479.1
z+2 32	3592.8	3593.3
z+2 33	3706.0	3706.2
z+2 34	3843.0	3843.3
z+2 35	3914.1	3914.2
z+2 36	4029.1	4029.2
z+2 37	4143.2	4143.5
z+2 38	4242.2	-*
z+2 39	4313.3	4313.6
z+2 40	4412.3	-*
z+2 41	4540.4	4540.8
z+2 42	4687.5	-*
z+2 43	4824.6	4825.2
z+2 44	4939.6	4940.3
z+2 45	5036.6	-*
z+2 46	5165.7	5165.4
z+2 47	5264.7	5265.4

\*z+2-ions not observed

Calculated and experimental masses of y-ions observed in the reISD spectra for Gal-3—Gal-3.

y-ions	[MH] <sup>+</sup> (mono) calc	[MH] <sup>+</sup> (mono) exp
y22	2328.2	2327.4
y23	2441.2	2440.4
y24	2569.3	2569.3
y25	2697.4	-*
y26	2796.5	-*
y27	2952.6	-*
y28	3089.7	3089.8
y29	3203.7	3203.7
y30	3366.8	-*
y31	3494.8	-*
y32	3607.9	3608.2
y33	3721.0	3721.1
y34	3858.0	3858.2
y35	3929.1	-*
y36	4044.1	-*
y37	4158.2	-*
y38	4257.2	-*
y39	4328.3	4328.5
y40	4427.3	4427.9
y41	4555.4	4555.8
y42	4702.5	-*
y43	4839.6	4840.0

\*y-ions not observed

Calculated and experimental masses of c-ions observed in the reISD spectra for Gal-3—Gal-3 with SA.

c-ions	No modification		N-terminal acetylation	
	[MH] <sup>+</sup> (mono) calc	[MH] <sup>+</sup> (mono) exp	[MH] <sup>+</sup> (mono) calc	[MH] <sup>+</sup> (mono) exp
c22	2153.2	2153.2	2195.3	2195.2
c23	2284.3	2284.2	2326.3	2326.2
c24	2397.4	2397.3	2439.4	2439.3
c25	2510.5	2510.4	2552.5	2552.4
c26	2611.5	2611.4	2653.5	2653.4
c27	2724.6	2724.5	2766.6	2766.5
c28	2837.7	2837.5	2879.7	2879.5
c29	2894.7	2894.5	2936.7	2936.6
c30	2995.8	2995.5	3037.8	3038.1
c31	3094.8	3094.7	3136.8	3136.8
c32	3222.9	-*	3264.9	-*
c33	3320.0	3319.8	3362.0	3361.5
c34	3434.0	3433.8	3476.0	3476.4
c35	3505.0	3504.9	3547.1	3546.7
c36	3619.1	3619.1	3661.1	3660.8
c37	3775.2	3775.4	3817.2	-*
c38	3888.3	3888.0	3930.3	-*
c39	3959.3	-*	4001.3	-*
c40	4072.4	4072.2	4114.4	4114.8

\*c-ions not observed

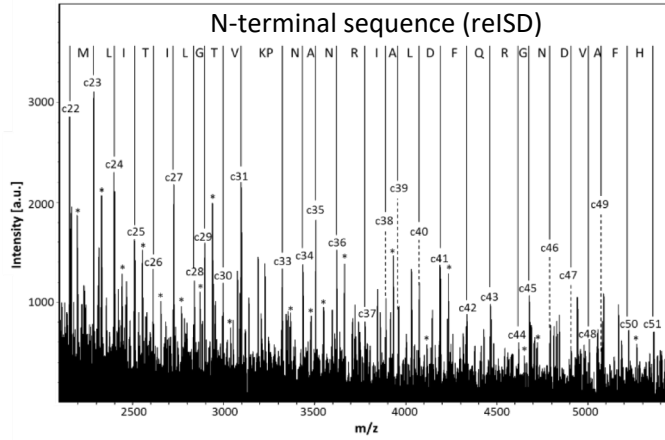
Calculated and experimental masses of c-ions observed in the linISD spectra for Gal-3—Gal-3 wt with SA.

c-ions	No modification		N-terminal acetylation	
	[MH] <sup>+</sup> (av) calc	[MH] <sup>+</sup> (av) exp	[MH] <sup>+</sup> (av) calc	[MH] <sup>+</sup> (av) exp
c43	4465.3	4464.8	4507.4	4508.0
c44	4621.5	4620.6	4663.6	-*
c45	4678.6	4678.7	4720.6	4720.8
c46	4792.7	4792.6	4834.7	-*
c47	4907.8	4907.2	4949.8	-*
c48	5006.9	5007.7	5048.9	5048.8
c49	5078.0	5078.2	5120.0	-*
c50	5225.2	5225.6	5267.2	-*
c51	5362.3	5361.9	5404.3	5404.6
c52	5509.5	5509.5	5551.5	5550.7
c53	5623.6	-*	5665.6	-*
c54	5720.7	5720.0	5762.7	5761.7
c55	5876.9	5876.6	5918.9	5919.0
c56	6024.0	6023.6	6066.1	6067.0
c57	6138.2	6139.1	6180.2	6181.0
c58	6267.3	6267.8	6309.3	6309.6
c59	6381.4	6381.1	6423.4	6423.6
c60	6495.5	-*	6537.5	6537.9
c61	6651.6	6652.1	6693.7	-*
c62	6807.8	6807.5	6849.9	-*
c63	6907.0	-*	6949.0	-*
c64	7020.1	7019.2	7062.2	7062.0
c65	7119.3	7118.5	7161.3	7160.5
c66	7222.4	-*	7264.4	7263.9
c67	7336.5	-*	7378.5	-*
c68	7437.6	-*	7479.6	-*
c69	7565.8	7566.7	7607.8	-*
c70	7678.9	-*	7721.0	-*
c71	7794.0	7793.2	7836.1	7836.6
c72	7908.1	7907.2	7950.2	7951.0
c73	8022.2	8022.0	8064.3	-*
c74	8208.4	-*	8250.5	-*
c75	8265.5	8264.9	8370.5	8307.8
c76	8421.7	8421.9	8463.7	8463.6

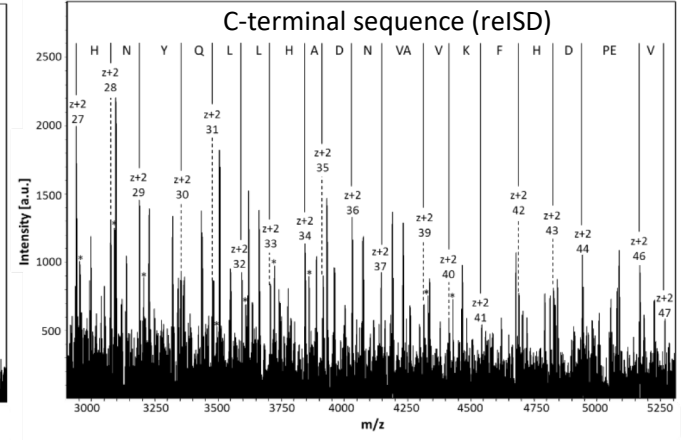
\*c-ions not observed

# Gal-3—8S—Gal-3

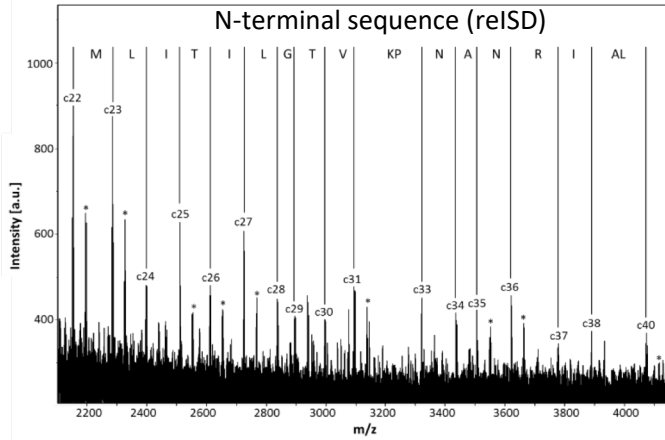
A



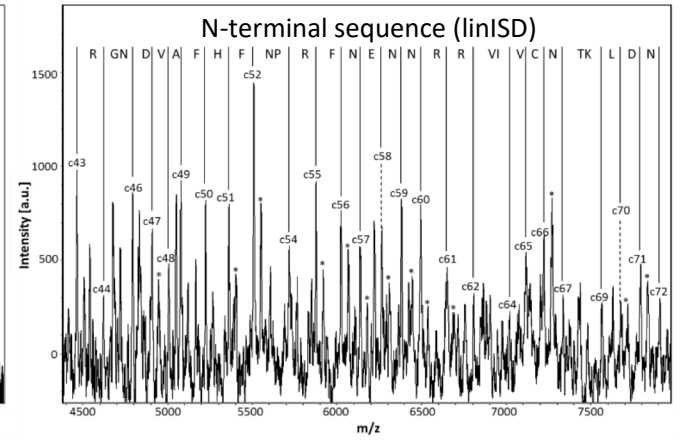
B



C



D



Calculated and experimental masses of c-ions observed in the reISD spectra for Gal-3—8S—Gal-3 with sDHB.

c-ions	No modifications		N-terminal acetylation	
	[MH] <sup>+</sup> (mono) calc	[MH] <sup>+</sup> (mono) exp	[MH] <sup>+</sup> (mono) calc	[MH] <sup>+</sup> (mono) exp
c22	2153.2	2153.4	2195.3	2195.4
c23	2284.3	2284.4	2326.3	2326.4
c24	2397.4	2397.5	2439.4	2439.4
c25	2510.5	2510.6	2552.5	2552.5
c26	2611.5	2611.6	2653.5	2653.4
c27	2724.6	2724.7	2766.6	2766.6
c28	2837.7	2837.8	2879.7	2879.7
c29	2894.7	2894.8	2936.7	2936.8
c30	2995.8	2995.8	3037.8	3037.8
c31	3094.8	3095.0	3136.8	3137.1
c32	3222.9	-*	3264.9	-*
c33	3320.0	3320.1	3362.0	3362.1
c34	3434.0	3434.1	3476.0	3475.9
c35	3505.0	3505.2	3547.0	3547.9
c36	3619.1	3619.3	3661.1	3661.2
c37	3775.2	3775.4	3817.2	-*
c38	3888.3	3887.6	3930.3	3930.6
c39	3959.3	3959.6	4001.3	-*
c40	4072.4	4072.4	4114.4	4114.8
c41	4187.4	4187.9	4229.4	4229.8
c42	4334.5	4334.9	4376.5	-*
c43	4462.6	4462.9	4504.6	-*
c44	4618.6	4618.9	4660.7	4661.2
c45	4675.7	4676.2	4717.7	4718.1
c46	4789.7	4790.4	4831.7	-*
c47	4904.7	4904.4	4946.8	-*
c48	5003.8	5004.4	5045.8	-*
c49	5074.8	5074.4	5116.9	-*
c50	5221.9	5221.7	5263.9	5264.7
c51	5359.0	5359.1	5401.0	-*

\*c-ions not observed

Calculated and experimental masses of z+2-ions observed in the reISD spectra for Gal-3—8S—Gal-3.

z+2-ions	[MH] <sup>+</sup> (mono) calc	[MH] <sup>+</sup> (mono) exp
z+2 27	2937.6	2937.6
z+2 28	3074.6	3074.9
z+2 29	3188.7	3188.7
z+2 30	3351.8	3351.8
z+2 31	3479.8	3479.9
z+2 32	3592.8	3593.0
z+2 33	3706.0	3706.2
z+2 34	3843.0	3843.4
z+2 35	3914.1	3914.4
z+2 36	4029.1	4029.5
z+2 37	4143.2	4143.7
z+2 38	4242.2	-*
z+2 39	4313.3	4313.8
z+2 40	4412.3	4412.8
z+2 41	4540.4	4540.8
z+2 42	4687.5	4687.4
z+2 43	4824.6	4825.3
z+2 44	4939.6	4939.2
z+2 45	5036.6	-*
z+2 46	5165.7	5156.8
z+2 47	5264.7	5264.7

\*z+2-ions not observed

Calculated and experimental masses of y-ions observed in the reISD spectra for Gal-3—8S—Gal-3.

y-ions	[MH] <sup>+</sup> (mono) calc	[MH] <sup>+</sup> (mono) exp
y27	2952.6	2952.7
y28	3089.7	3089.8
y29	3203.7	3204.0
y30	3366.8	-*
y31	3494.8	3495.0
y32	3607.9	3608.0
y33	3721.0	3721.3
y34	3858.0	3858.4
y35	3929.1	-*
y36	4044.1	-*
y37	4158.2	-*
y38	4257.2	-*
y39	4328.3	4328.8
y40	4427.3	4427.9
y41	4555.4	-*
y42	4702.5	4703.0
y43	4839.6	-*
y44	4954.6	-*
y45	5051.6	5051.3

\*y-ions not observed



Calculated and experimental masses of c-ions observed in the reISD spectra for Gal-3—8S—Gal-3 with SA.

c-ions	No modification		N-terminal acetylation	
	[MH] <sup>+</sup> (mono) calc	[MH] <sup>+</sup> (mono) exp	[MH] <sup>+</sup> (mono) calc	[MH] <sup>+</sup> (mono) exp
c22	2153.2	2153.3	2195.3	2195.4
c23	2284.3	2284.4	2326.3	2326.3
c24	2397.4	2397.3	2439.4	_*
c25	2510.5	2510.5	2552.5	2552.5
c26	2611.5	2611.5	2653.5	2653.6
c27	2724.6	2724.7	2766.6	2766.6
c28	2837.7	2837.7	2879.7	_*
c29	2894.7	2894.7	2936.7	_*
c30	2995.8	2995.8	3037.8	_*
c31	3094.8	3094.8	3136.8	3136.8
c32	3222.9	_*	3264.9	_*
c33	3320.0	3319.8	3362.0	_*
c34	3434.0	3434.0	3476.0	_*
c35	3505.0	3505.0	3547.1	3547.0
c36	3619.1	3619.2	3661.1	3660.9
c37	3775.2	3775.1	3817.2	_*
c38	3888.3	3888.3	3930.3	_*
c39	3959.3	_*	4001.3	_*
c40	4072.4	4072.4	4114.4	4114.3

\*c-ions not observed

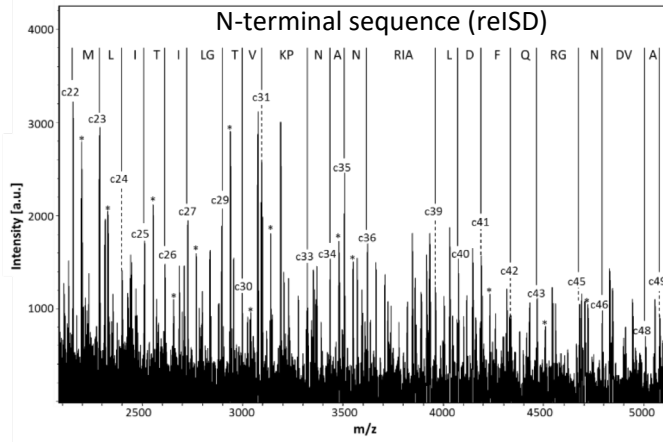
Calculated and experimental masses of c-ions observed in the linISD spectra for Gal-3—8S—Gal-3 with SA.

c-ions	No modification		N-terminal acetylation	
	[MH] <sup>+</sup> (av) calc	[MH] <sup>+</sup> (av) exp	[MH] <sup>+</sup> (av) calc	[MH] <sup>+</sup> (av) exp
c43	4465.3	4464.8	4507.4	-*
c44	4621.5	4620.8	4663.6	-*
c45	4678.6	-*	4720.6	4720.2
c46	4792.7	4792.5	4834.7	-*
c47	4907.8	4908.3	4949.8	4949.1
c48	5006.9	5007.1	5048.9	-*
c49	5078.0	5077.7	5120.0	5120.4
c50	5225.2	5225.0	5267.2	-*
c51	5362.3	5361.9	5404.3	5404.6
c52	5509.5	5508.5	5551.5	5551.4
c53	5623.6	-*	5665.6	-*
c54	5720.7	5719.8	5762.7	-*
c55	5876.9	5877.0	5918.9	5918.6
c56	6024.0	6024.0	6066.1	6066.7
c57	6138.2	6138.0	6180.2	6180.2
c58	6267.3	6268.0	6309.3	6308.8
c59	6381.4	6381.4	6423.4	6423.8
c60	6495.5	6494.5	6537.5	6537.1
c61	6651.6	6651.4	6693.7	6694.2
c62	6807.8	6808.3	6849.9	-*
c63	6907.0	-*	6949.0	-*
c64	7020.1	7020.5	7062.2	-*
c65	7119.3	7119.3	7161.3	-*
c66	7222.4	7223.2	7264.4	7265.1
c67	7336.5	7337.0	7378.5	-*
c68	7437.6	-*	7479.6	7479.0
c69	7565.8	7565.9	7607.8	-*
c70	7678.9	7679.5	7721.0	7720.6
c71	7794.0	7793.9	7836.1	7835.8
c72	7908.1	7908.4	7950.2	-*

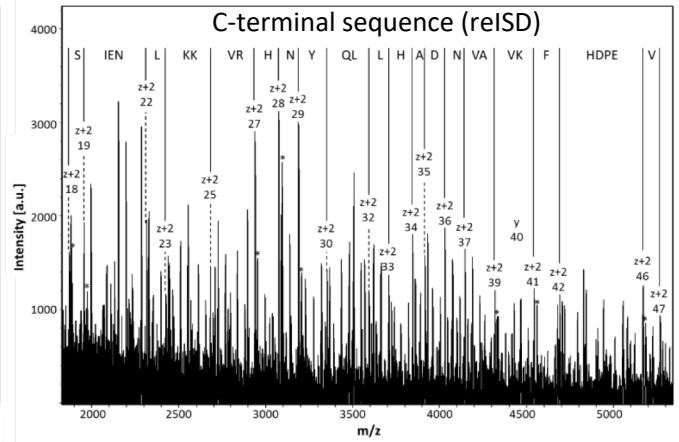
\*c-ions not observed

# Gal-3—8L—Gal-3

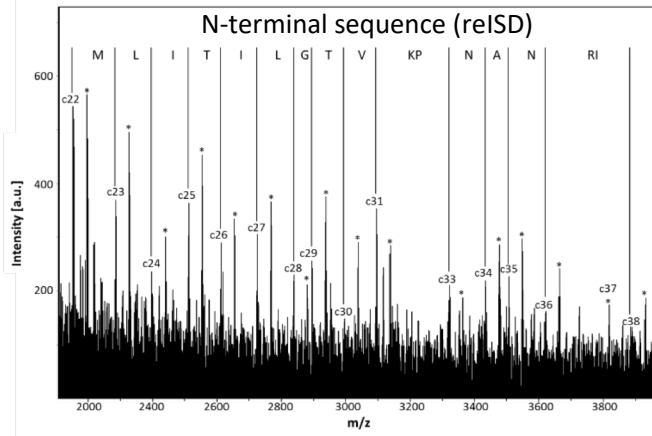
A



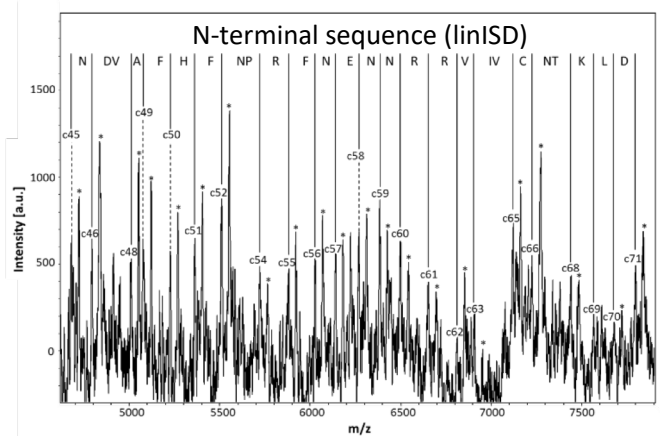
B



C



D



Calculated and experimental masses of c-ions observed in the reISD spectra for Gal-3—8L—Gal-3 with sDHB.

c-ions	No modifications		N-terminal acetylation	
	[MH] <sup>+</sup> (mono) calc	[MH] <sup>+</sup> (mono) exp	[MH] <sup>+</sup> (mono) calc	[MH] <sup>+</sup> (mono) exp
c22	2153.2	2153.5	2195.3	2195.5
c23	2284.3	2284.5	2326.3	2326.5
c24	2397.4	2397.6	2439.4	2439.6
c25	2510.5	2510.8	2552.5	2552.6
c26	2611.5	2611.8	2653.5	2653.7
c27	2724.6	2723.6	2766.6	2766.8
c28	2837.7	_*	2879.7	2879.9
c29	2894.7	2895.0	2936.7	2936.9
c30	2995.8	2996.0	3037.8	3037.1
c31	3094.8	3094.9	3136.8	_*
c32	3222.9	_*	3264.9	_*
c33	3320.0	3320.2	3362.0	_*
c34	3434.0	3434.2	3476.0	3476.4
c35	3505.0	3505.3	3547.0	3547.5
c36	3619.1	3619.5	3661.1	_*
c37	3775.2	_*	3817.2	_*
c38	3888.3	_*	3930.3	3929.7
c39	3959.3	3959.9	4001.3	_*
c40	4072.4	4072.7	4114.4	_*
c41	4187.4	4187.9	4229.4	4229.3
c42	4334.5	4334.7	4376.5	_*
c43	4462.6	4462.5	4504.6	4505.3
c44	4618.6	_*	4660.7	_*
c45	4675.7	4676.5	4717.7	4718.1
c46	4789.7	4789.6	4831.7	_*
c47	4904.7	_*	4946.8	_*
c48	5003.8	5004.5	5045.8	_*
c49	5074.8	5075.0	5116.9	_*

\*c-ions not observed

Calculated and experimental masses of z+2-ions observed in the reISD spectra for Gal-3—8L—Gal-3.

z+2-ions	[MH] <sup>+</sup> (mono) calc	[MH] <sup>+</sup> (mono) exp
z+2 18	1870.0	1870.1
z+2 19	1957.0	1957.2
z+2 20	2070.1	-*
z+2 21	2199.1	-*
z+2 22	2313.2	2313.4
z+2 23	2426.2	2426.4
z+2 24	2554.3	-*
z+2 25	2682.4	2681.9
z+2 26	2781.5	-*
z+2 27	2937.6	2938.0
z+2 28	3074.6	3074.9
z+2 29	3188.7	3189.1
z+2 30	3351.8	3352.1
z+2 31	3479.8	-*
z+2 32	3592.8	3593.3
z+2 33	3706.0	3706.4
z+2 34	3843.0	3843.6
z+2 35	3914.1	3914.5
z+2 36	4029.1	4029.5
z+2 37	4143.2	4143.9
z+2 38	4242.2	-*
z+2 39	4313.3	4314.1
z+2 40	4412.3	-*
z+2 41	4540.4	4540.2
z+2 42	4687.5	4687.8
z+2 43	4824.6	-*
z+2 44	4939.6	-*
z+2 45	5036.6	-*
z+2 46	5165.7	5166.1
z+2 47	5264.7	5265.4

\*z+2-ions not observed

Calculated and experimental masses of y-ions observed in the reISD spectra for Gal-3—8L—Gal-3.

y-ions	[MH] <sup>+</sup> (mono) calc	[MH] <sup>+</sup> (mono) exp
y18	1885.0	1885.2
y19	1972.0	1972.2
y20	2085.1	2085.2
y21	2214.1	2214.4
y22	2328.2	-*
y23	2441.2	-*
y24	2569.3	-*
y25	2697.4	-*
y26	2796.5	-*
y27	2952.6	2952.9
y28	3089.7	3090.1
y29	3203.7	3204.0
y30	3366.8	-*
y31	3494.8	-*
y32	3607.9	-*
y33	3721.0	-*
y34	3858.0	-*
y35	3929.1	3929.7
y36	4044.1	-*
y37	4158.2	-*
y38	4257.2	-*
y39	4328.3	4328.0
y40	4427.3	4427.4
y41	4555.4	4555.0
y42	4702.5	4703.2
y43	4839.6	4840.3
y44	4954.6	-*
y45	5051.6	5051.8
y46	5180.7	5181.0

\*y-ions not observed

Calculated and experimental masses of c-ions observed in the reISD spectra for Gal-3—8L—Gal-3 with SA.

c-ions	No modification		N-terminal acetylation	
	[MH] <sup>+</sup> (mono) calc	[MH] <sup>+</sup> (mono) exp	[MH] <sup>+</sup> (mono) calc	[MH] <sup>+</sup> (mono) exp
c22	2153.2	2153.4	2195.3	2195.5
c23	2284.3	2284.4	2326.3	2326.3
c24	2397.4	2396.8	2439.4	2439.5
c25	2510.5	2510.6	2552.5	2552.8
c26	2611.5	2611.6	2653.5	2653.5
c27	2724.6	2724.7	2766.6	2766.7
c28	2837.7	2837.8	2879.7	2879.7
c29	2894.7	2894.7	2936.7	2936.7
c30	2995.8	2995.9	3037.8	3037.7
c31	3094.8	3094.8	3136.8	3136.8
c32	3222.9	-*	3264.9	-*
c33	3320.0	3320.0	3362.0	3361.8
c34	3434.0	3434.0	3476.0	3475.9
c35	3505.0	3505.0	3547.1	3547.1
c36	3619.1	3619.9	3661.1	3661.0
c37	3775.2	-*	3817.2	3817.0
c38	3888.3	3888.3	3930.3	3929.8

\*c-ions not observed

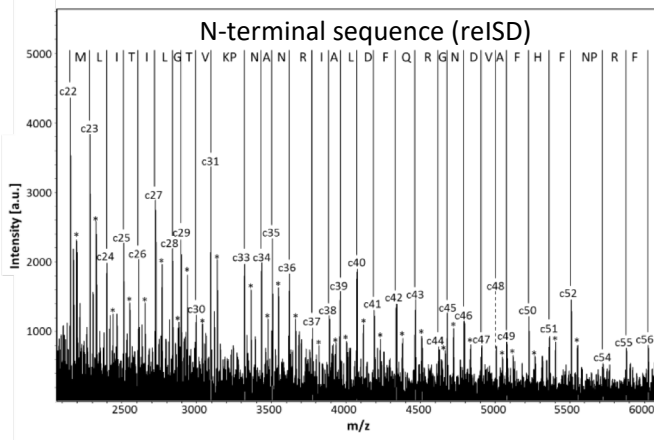
Calculated and experimental masses of c-ions observed in the linISD spectra for Gal-3—8L—Gal-3 wt with SA.

c-ions	No modification		N-terminal acetylation	
	[MH] <sup>+</sup> (av) calc	[MH] <sup>+</sup> (av) exp	[MH] <sup>+</sup> (av) calc	[MH] <sup>+</sup> (av) exp
c45	4678.6	4679.5	4720.6	4720.9
c46	4792.7	4793.5	4834.7	4835.9
c47	4907.8	-*	4949.8	4949.3
c48	5006.9	5005.7	5048.9	-*
c49	5078.0	5079.8	5120.0	5120.6
c50	5225.2	5225.5	5267.2	5267.4
c51	5362.3	5361.8	5404.3	5404.4
c52	5509.5	5509.0	5551.5	5553.3
c53	5623.6	-*	5665.6	-*
c54	5720.7	5721.4	5762.7	5763.4
c55	5876.9	5877.1	5918.9	5918.7
c56	6024.0	6025.0	6066.1	6065.7
c57	6138.2	6139.9	6180.2	6180.9
c58	6267.3	6268.6	6309.3	6309.3
c59	6381.4	6381.1	6423.4	6421.5
c60	6495.5	6493.9	6537.5	6539.4
c61	6651.6	6650.2	6693.7	6695.0
c62	6807.8	6809.1	6849.9	-*
c63	6907.0	6907.1	6949.0	-*
c64	7020.1	-*	7062.2	-*
c65	7119.3	7117.8	7161.3	-*
c66	7222.4	7222.3	7264.4	-*
c67	7336.5	-*	7378.5	7380.1
c68	7437.6	7439.1	7479.6	7480.2
c69	7565.8	7563.9	7607.8	-*
c70	7678.9	7678.0	7721.0	7720.9
c71	7794.0	7793.0	7836.1	7836.5

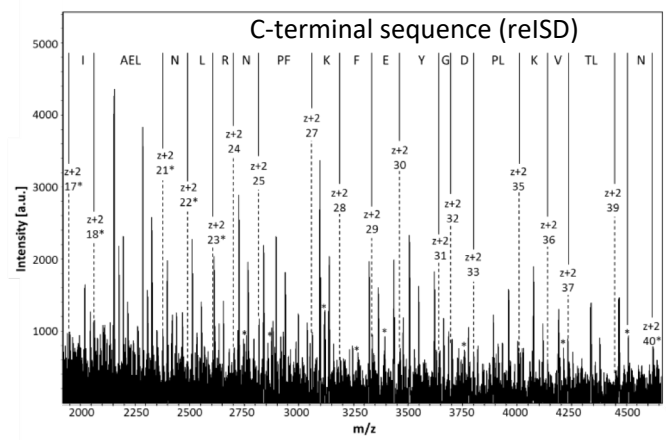
\*c-ions not observed

# Gal-3—Gal-1

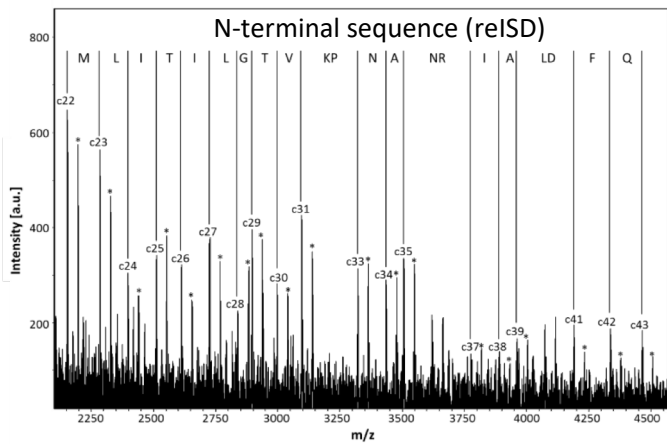
A



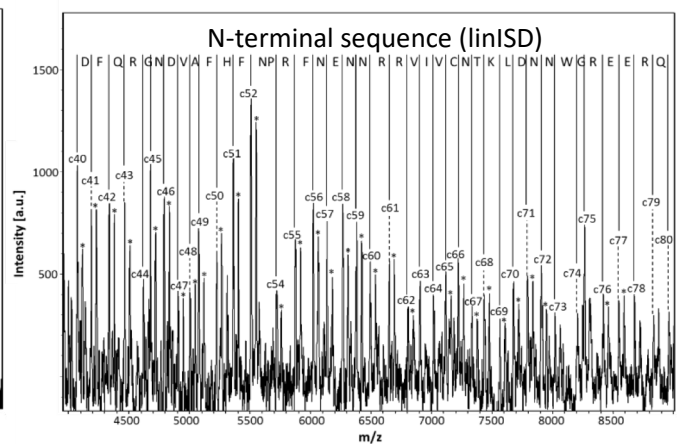
B



C



D





Calculated and experimental masses of c-ions observed in the reISD spectra for Gal-3—Gal-1 with sDHB.

c-ions	No modifications		N-terminal acetylation	
	[MH] <sup>+</sup> (av) calc	[MH] <sup>+</sup> (av) exp	[MH] <sup>+</sup> (av) calc	[MH] <sup>+</sup> (av) exp
c22	2154.6	2154.6	2196.6	2196.6
c23	2285.8	2285.1	2327.8	2327.7
c24	2398.9	2398.7	2441.0	2440.7
c25	2512.1	2511.8	2554.1	2554.1
c26	2613.2	2612.8	2655.2	2654.7
c27	2726.4	2727.0	2768.4	2768.8
c28	2839.5	2840.0	2881.6	2882.0
c29	2896.6	2896.9	2938.6	2938.8
c30	2997.7	2997.6	3039.7	3039.9
c31	3096.8	3097.1	3138.8	3139.2
c32	3225.0	_*	3267.0	_*
c33	3322.1	3322.4	3364.1	3364.2
c34	3436.2	3436.2	3478.2	3478.4
c35	3507.3	3507.4	3549.3	3549.3
c36	3621.4	3621.2	3663.4	3663.6
c37	3777.6	3777.2	3819.6	3820.1
c38	3890.7	3890.8	3932.8	3932.6
c39	3961.8	3961.7	4003.8	4003.6
c40	4075.0	4074.9	4117.0	4118.0
c41	4190.0	4189.8	4232.1	4232.2
c42	4337.2	4337.8	4379.2	4378.8
c43	4465.3	4465.8	4507.4	4508.1
c44	4621.5	4621.4	4663.6	4663.1
c45	4678.6	4679.0	4720.6	4721.4
c46	4792.7	_*	4834.7	4834.3
c47	4907.8	4908.5	4949.8	_*
c48	5006.9	5007.0	5048.9	5049.8
c49	5078.0	5077.9	5120.0	5120.8
c50	5225.2	5225.8	5267.2	_*
c51	5362.3	5363.2	5404.3	_*
c52	5509.5	5510.4	5551.5	5552.2
c53	5623.6	_*	5665.6	_*
c54	5720.7	5720.5	5762.7	_*
c55	5876.9	5876.5	5918.9	_*
c56	6024.0	6023.8	6066.1	_*

\*c-ions not observed

**Calculated and experimental masses of z+2-ions observed in the reISD spectra for Gal-3—Gal-1**

c-ions	No modification		C306- carbamidomethylation	
	[MH] <sup>+</sup> (av) calc	[MH] <sup>+</sup> (av) exp	[MH] <sup>+</sup> (av) calc	[MH] <sup>+</sup> (av) exp
z+2 17	1894.2	.*	1951.2	1951.2
z+2 18	2007.3	.*	2064.4	2063.8
z+2 19	2078.4	.*	2135.4	.*
z+2 20	2207.4	.*	2264.6	.*
z+2 21	2320.7	.*	2377.7	2377.5
z+2 22	2434.8	.*	2491.8	2491.3
z+2 23	2547.9	.*	2605.0	2604.5
z+2 24	2704.1	2704.5	2761.2	2760.5
z+2 25	2818.2	2817.6	2875.3	2874.6
z+2 26	2915.3	.*	2972.4	.*
z+2 27	3062.5	3062.5	3119.6	3119.5
z+2 28	3190.7	3190.7	3247.7	3247.4
z+2 29	3337.9	3337.9	3394.9	3394.1
z+2 30	3467.0	3466.5	3524.0	.*
z+2 31	3630.1	3630.1	3687.2	3686.9
z+2 32	3687.2	3686.9	3744.2	3743.6
z+2 33	3802.3	3802.7	3859.3	.*
z+2 34	3899.4	.*	3956.4	.*
z+2 35	4012.6	4012.4	4069.6	.*
z+2 36	4140.7	4141.0	4197.8	4197.5
z+2 37	4239.9	4239.5	4296.9	.*
z+2 38	4341.0	.*	4398.0	.*
z+2 39	4454.1	4453.5	4511.2	4510.5
z+2 40	4568.2	.*	4625.3	4624.7

\*z+2-ions not observed

Calculated and experimental masses of c-ions observed in the reISD spectra for Gal-3—Gal-1 with SA.

c-ions	No modification		N-terminal acetylation	
	[MH] <sup>+</sup> (mono) calc	[MH] <sup>+</sup> (mono) exp	[MH] <sup>+</sup> (mono) calc	[MH] <sup>+</sup> (mono) exp
c22	2153.2	2153.4	2195.3	2195.4
c23	2284.3	2284.5	2326.3	2326.4
c24	2397.4	2397.6	2439.4	2439.8
c25	2510.5	2510.7	2552.5	2552.6
c26	2611.5	2611.6	2653.5	2653.7
c27	2724.6	2724.6	2766.6	2766.6
c28	2837.7	2837.7	2879.7	2880.0
c29	2894.7	2894.7	2936.7	2936.8
c30	2995.8	2995.8	3037.8	3037.8
c31	3094.8	3094.8	3136.8	3136.8
c32	3222.9	_*	3264.9	_*
c33	3320.0	3319.9	3362.0	3362.4
c34	3434.0	3434.2	3476.0	3476.0
c35	3505.0	3505.0	3547.1	3547.0
c36	3619.1	_*	3661.1	_*
c37	3775.2	3775.4	3817.2	3817.4
c38	3888.3	3888.6	3930.3	3930.9
c39	3959.3	3959.1	4001.3	4001.6
c40	4072.4	_*	4114.4	_*
c41	4187.4	4187.5	4229.4	4229.8
c42	4334.5	4334.4	4376.5	4376.6
c43	4462.6	4463.2	4504.6	4505.0

\*c-ions not observed

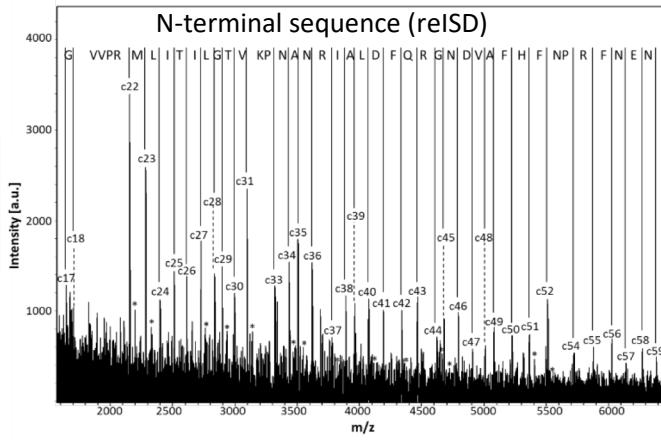
Calculated and experimental masses of c-ions observed in the linSD spectra for Gal-3—Gal-1 with SA.

c-ions	No modification		N-terminal acetylation	
	[MH] <sup>+</sup> (av) calc	[MH] <sup>+</sup> (av) exp	[MH] <sup>+</sup> (av) calc	[MH] <sup>+</sup> (av) exp
c42	4337.2	4337.5	4379.2	4379.2
c43	4465.3	4465.0	4507.4	4506.7
c44	4621.5	4622.3	4663.6	-*
c45	4678.6	4677.4	4720.6	4720.6
c46	4792.7	4792.1	4834.7	4835.0
c47	4907.8	4906.4	4949.8	4949.5
c48	5006.9	5007.2	5048.9	5048.8
c49	5078.0	5077.3	5120.0	5120.0
c50	5225.2	5226.1	5267.2	5268.0
c51	5362.3	5362.7	5404.3	5404.9
c52	5509.5	5509.3	5551.5	5551.8
c53	5623.6	-*	5665.6	-*
c54	5720.7	5721.4	5762.7	5762.6
c55	5876.9	5876.7	5918.9	5918.7
c56	6024.0	6024.0	6066.1	6065.8
c57	6138.2	6137.8	6180.2	6179.4
c58	6267.3	6267.6	6309.3	6310.2
c59	6381.4	6381.6	6423.4	6424.3
c60	6495.5	6496.1	6537.5	6537.6
c61	6651.6	6650.7	6693.7	6694.3
c62	6807.8	6808.7	6849.9	6849.3
c63	6907.0	6906.5	6949.0	-*
c64	7020.1	7021.2	7062.2	-*
c65	7119.3	7120.1	7161.3	7162.2
c66	7222.4	7222.3	7264.4	7264.3
c67	7336.5	7336.1	7378.5	7378.0
c68	7437.6	7437.0	7479.6	7478.7
c69	7565.8	7565.9	7607.8	7607.0
c70	7678.9	7677.9	7721.0	7721.8
c71	7794.0	7793.8	7836.1	7836.1
c72	7908.1	7907.6	7950.2	7950.4
c73	8022.2	8022.1	8064.3	-*
c74	8208.4	8207.4	8250.5	8249.5
c75	8265.5	8264.9	8307.5	-*
c76	8421.7	8421.1	8463.7	8464.3
c77	8550.8	8551.1	8592.8	8592.9
c78	8679.9	8680.0	8722.0	-*
c79	8836.1	8836.2	8878.1	-*
c80	8964.2	8963.7	9006.3	-*

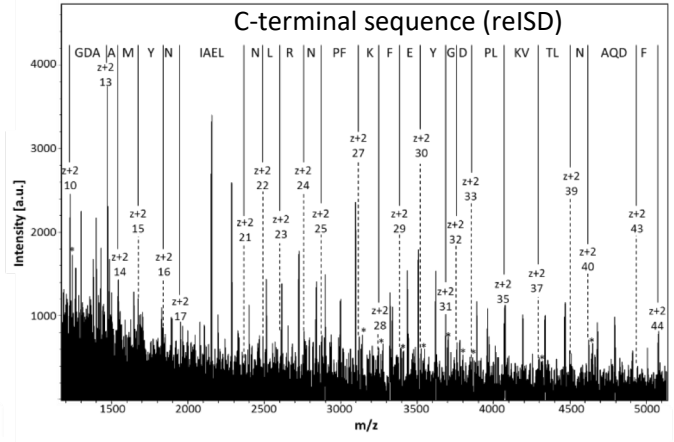
\*c-ions not observed

# Gal-3—8S—Gal-1

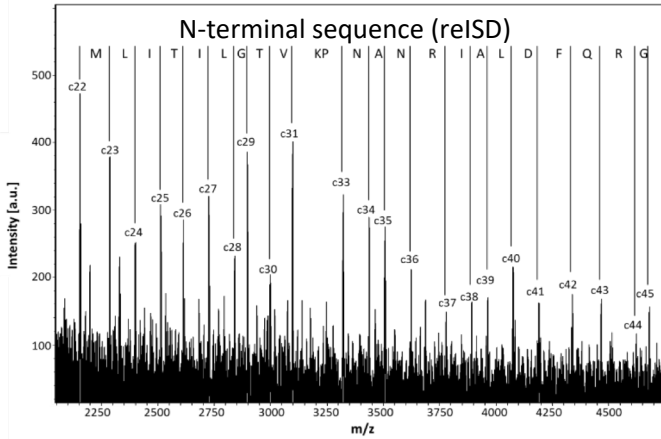
A



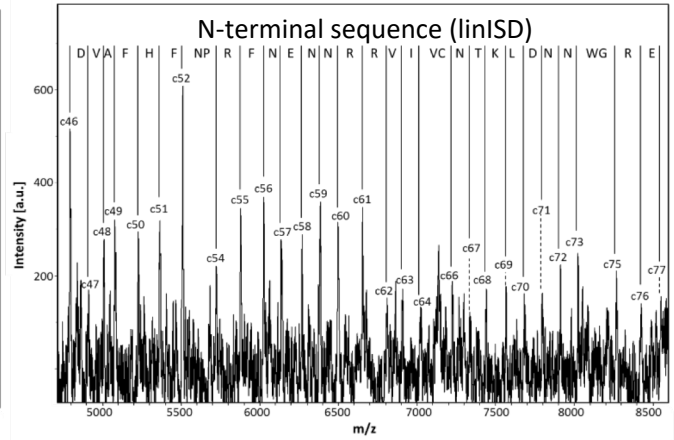
B



C



D



## Calculated and experimental masses of c-ions observed in the reISD spectra for Gal-3—8S—Gal-1 with sDHB.

c-ions	No modifications		N-terminal acetylation	
	[MH] <sup>+</sup> (av) calc	[MH] <sup>+</sup> (av) exp	[MH] <sup>+</sup> (av) calc	[MH] <sup>+</sup> (av) exp
c22	2154.6	2154.5	2196.6	2196.4
c23	2285.8	2285.6	2327.8	2327.6
c24	2398.9	2398.7	2441.0	_*
c25	2512.1	2511.7	2554.1	_*
c26	2613.2	2612.7	2655.2	_*
c27	2726.4	2726.0	2768.4	2767.8
c28	2839.5	2839.0	2881.6	_*
c29	2896.6	2896.2	2938.6	2938.2
c30	2997.7	2997.2	3039.7	_*
c31	3096.8	3096.4	3138.8	3139.2
c32	3225.0	_*	3267.0	_*
c33	3322.1	3322.5	3364.1	_*
c34	3436.2	3436.4	3478.2	3478.4
c35	3507.3	3507.4	3549.3	3548.8
c36	3621.4	3621.5	3663.4	_*
c37	3777.6	3777.6	3819.6	3819.6
c38	3890.7	3890.4	3932.8	_*
c39	3961.8	3961.8	4003.8	_*
c40	4075.0	4075.3	4117.0	4117.0
c41	4190.0	4190.2	4232.1	_*
c42	4337.2	4337.3	4379.2	4380.1
c43	4465.3	4464.8	4507.4	_*
c44	4621.5	4621.6	4663.6	4663.1
c45	4678.6	4678.8	4720.6	4720.7
c46	4792.7	4792.6	4834.7	_*
c47	4907.8	4908.1	4949.8	_*
c48	5006.9	5006.5	5048.9	_*
c49	5078.0	5078.7	5120.0	_*
c50	5225.2	5225.9	5267.2	_*
c51	5362.3	5363.2	5404.3	5404.5
c52	5509.5	5509.8	5551.5	5551.4
c53	5623.6	_*	5665.6	_*
c54	5720.7	5720.4	5762.7	_*
c55	5876.9	5877.1	5918.9	_*
c56	6024.0	6023.6	6066.1	_*
c57	6138.2	6138.2	6180.2	_*
c58	6267.3	6267.3	6309.3	_*
c59	6381.4	6381.4	6423.4	_*

\*c-ions not observed

Calculated and experimental masses of z+2-ions observed in the reISD spectra for Gal-3—8S—Gal-1 (C306 carbamidomethylated).

z+2-ions	[MH] <sup>+</sup> (av) calc	[MH] <sup>+</sup> (av) exp
z+2 10	1228.4	1228.8
z+2 11	1285.5	.*
z+2 12	1400.6	.*
z+2 13	1471.6	1471.9
z+2 14	1542.7	1543.0
z+2 15	1673.9	1674.1
z+2 16	1837.1	1837.1
z+2 17	1951.2	1950.6
z+2 18	2064.4	.*
z+2 19	2135.4	.*
z+2 20	2264.6	.*
z+2 21	2377.7	2377.4
z+2 22	2491.8	2491.7
z+2 23	2605.0	2604.6
z+2 24	2761.2	2760.6
z+2 25	2875.3	2874.8
z+2 26	2972.4	.*
z+2 27	3119.6	3120.0
z+2 28	3247.7	3247.6
z+2 29	3394.9	3394.9
z+2 30	3524.0	3524.4
z+2 31	3687.2	3686.3
z+2 32	3744.2	3744.5
z+2 33	3859.3	3859.9
z+2 34	3956.4	.*
z+2 35	4069.6	4069.6
z+2 36	4197.8	.*
z+2 37	4296.9	4297.2
z+2 38	4398.0	.*
z+2 39	4511.2	4511.7
z+2 40	4625.3	4624.5
z+2 41	4696.4	.*
z+2 42	4824.5	.*
z+2 43	4939.6	4939.7
z+2 44	5086.7	5086.3

\*z+2-ions not observed

Calculated and experimental masses of y-ions observed in the reISD spectra for Gal-3—8S—Gal-1 (C306 carbamidomethylated)

y-ions	[MH] <sup>+</sup> (av) calc	[MH] <sup>+</sup> (av) exp
y10	1243.5	1242.8
y11	1300.5	1300.9
y12	1415.6	.*
y13	1486.7	1486.9
y14	1557.8	.*
y15	1688.9	.*
y16	1852.1	.*
y17	1966.2	.*
y18	2079.4	2079.3
y19	2150.4	.*
y20	2279.6	.*
y21	2392.7	.*
y22	2506.8	.*
y23	2620.0	.*
y24	2776.2	.*
y25	2890.3	.*
y26	2987.4	2987.7
y27	3134.6	3134.8
y28	3262.7	3262.0
y29	3409.9	3410.2
y30	3539.0	3539.4
y31	3702.2	3702.2
y32	3759.2	3759.5
y33	3874.3	3874.5
y34	3971.5	3971.7
y35	4084.6	.*
y36	4212.8	.*
y37	4311.9	4312.2
y38	4413.0	.*
y39	4526.2	.*
y40	4640.3	4640.3

\*y-ions not observed

Calculated and experimental masses of c-ions observed in the reISD spectra for Gal-3—8S—Gal-1 with SA.

	No modification	
c-ions	[MH] <sup>+</sup> (av) calc	[MH] <sup>+</sup> (av) exp
c22	2154.6	2154.6
c23	2285.8	2286.4
c24	2398.9	2399.6
c25	2512.1	2512.3
c26	2613.2	2614.0
c27	2726.4	2725.8
c28	2839.5	2840.2
c29	2896.6	2897.1
c30	2997.7	2997.9
c31	3096.8	3097.3
c32	3225.0	-*
c33	3322.1	3322.5
c34	3436.2	3437.1
c35	3507.3	3506.7
c36	3621.4	3622.1
c37	3777.6	3777.2
c38	3890.7	3891.3
c39	3961.8	3962.5
c40	4075.0	4074.6
c41	4190.0	4190.7
c42	4337.2	4336.7
c43	4465.3	4465.7
c44	4621.5	4622.3
c45	4678.6	4678.7

\*c-ions not observed



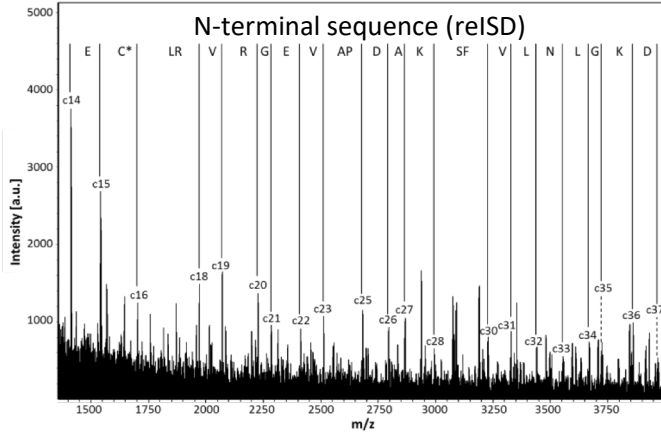
Calculated and experimental masses of c-ions observed in the linISD spectra for Gal-3—8S—Gal-1 with SA.

c-ions	No modification	
	[MH] <sup>+</sup> (av) calc	[MH] <sup>+</sup> (av) exp
c39	3961.8	3962.1
c40	4075.0	4075.2
c41	4190.0	4191.2
c42	4337.2	4338.4
c43	4465.3	4466.4
c44	4621.5	.*
c45	4678.6	.*
c46	4792.7	4793.9
c47	4907.8	4909.0
c48	5006.9	5006.5
c49	5078.0	5076.7
c50	5225.2	5224.4
c51	5362.3	5361.7
c52	5509.5	5510.5
c53	5623.6	.*
c54	5720.7	5722.5
c55	5876.9	5878.7
c56	6024.0	6025.2
c57	6138.2	6138.6
c58	6267.3	6267.8
c59	6381.4	6381.4
c60	6495.5	6496.1
c61	6651.6	6652.2
c62	6807.8	6807.6
c63	6907.0	6908.0
c64	7020.1	7019.6
c65	7119.3	.*
c66	7222.4	7222.4
c67	7336.5	7335.0
c68	7437.6	7437.3
c69	7565.8	7567.0
c70	7678.9	7680.6
c71	7794.0	7795.0
c72	7908.1	7909.5
c73	8022.2	8022.3
c74	8208.4	.*
c75	8265.5	8266.6
c76	8421.7	8419.9
c77	8550.8	8550.7

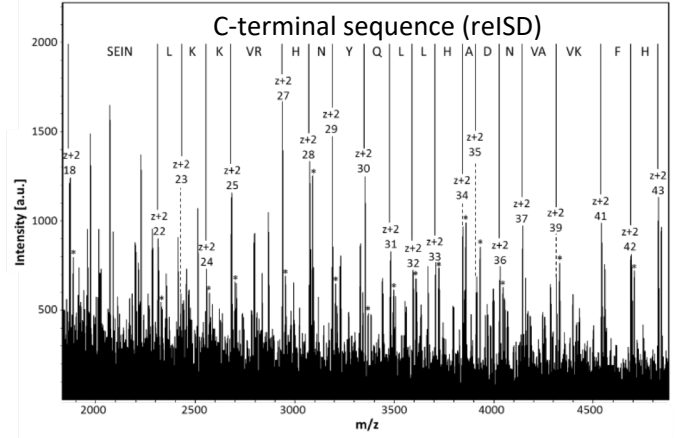
\*c-ions not observed

# Gal-1—Gal-3

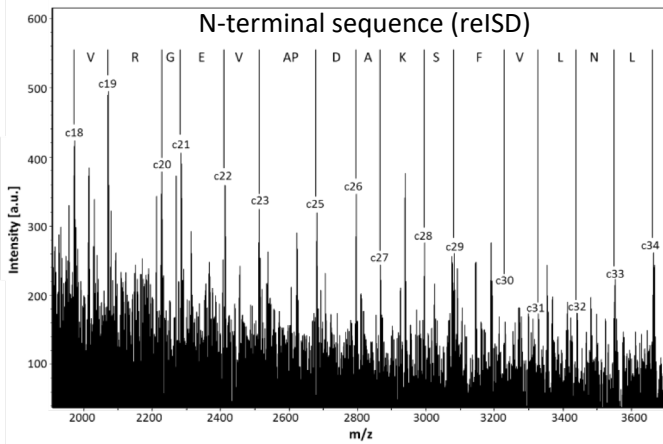
A



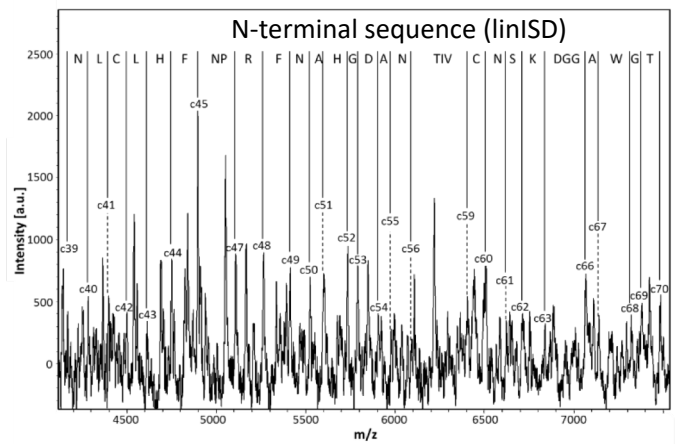
B



C



D



Calculated and experimental masses of c-ions observed in the reISD spectra for Gal-1—Gal-3 with sDHB.

	C2 and C16 - carbamidomethylation	
c-ions	[MH] <sup>+</sup> (av) calc	[MH] <sup>+</sup> (av) exp
c14	1413.7	1413.0
c15	1542.8	1542.0
c16	1703.0	1703.1
c17	1816.1	.*
c18	1972.3	1972.3
c19	2071.4	2071.3
c20	2227.6	2227.5
c21	2284.7	2284.6
c22	2413.8	2413.5
c23	2512.9	2512.5
c24	2584.0	.*
c25	2681.1	2681.2
c26	2796.2	2796.5
c27	2867.3	2867.2
c28	2995.5	2994.9
c29	3082.5	.*
c30	3229.7	3229.2
c31	3328.9	3328.8
c32	3442.0	3442.0
c33	3556.1	3556.1
c34	3669.3	3669.2
c35	3726.3	3726.5
c36	3854.5	3854.4
c37	3969.6	3969.8

\*c-ions not observed

Calculated and experimental masses of z+2-ions observed in the reISD spectra for Gal-1—Gal-3.

z+2-ions	[MH] <sup>+</sup> (mono) calc	[MH] <sup>+</sup> (mono) exp
z+2 18	1871.1	1871.1
z+2 19	1958.2	.*
z+2 20	2071.3	2071.3
z+2 21	2200.4	.*
z+2 22	2314.6	2314.4
z+2 23	2427.7	2427.6
z+2 24	2555.9	2555.8
z+2 25	2684.1	2683.6
z+2 26	2783.2	.*
z+2 27	2939.4	2939.7
z+2 28	3076.6	3076.2
z+2 29	3190.6	3191.0
z+2 30	3353.8	3354.0
z+2 31	3482.0	3482.2
z+2 32	3595.1	3595.4
z+2 33	3708.3	3708.5
z+2 34	3845.4	3845.4
z+2 35	3916.5	3917.0
z+2 36	4031.6	4031.7
z+2 37	4145.7	4145.4
z+2 38	4244.8	.*
z+2 39	4315.9	4315.6
z+2 40	4415.0	.*
z+2 41	4543.2	4543.1
z+2 42	4690.4	4691.2
z+2 43	4827.5	4828.0

\*z+2-ions not observed

Calculated and experimental masses of y-ions observed in the reISD spectra for Gal-1—Gal-3.

y-ions	[MH] <sup>+</sup> (mono) calc	[MH] <sup>+</sup> (mono) exp
y17	1758.0	1758.1
y18	1886.2	1886.3
y19	1973.2	1973.3
y20	2086.4	.*
y21	2215.5	2215.6
y22	2329.6	2329.4
y23	2442.7	.*
y24	2570.9	2571.2
y25	2699.1	2698.6
y26	2798.2	.*
y27	2954.4	2954.7
y28	3091.6	3091.8
y29	3205.8	3206.0
y30	3368.8	3369.3
y31	3497.0	3497.1
y32	3610.1	3610.2
y33	3723.3	3723.7
y34	3860.4	3860.6
y35	3931.5	3931.4
y36	4046.6	4046.4
y37	4160.7	.*
y38	4259.8	.*
y39	4330.9	4331.0
y40	4430.0	.*
y41	4558.2	.*
y42	4705.4	4705.3

\*y-ions not observed

Calculated and experimental masses of c-ions observed in the reISD spectra for Gal-1—Gal-3 with SA.

C2 and C16 - carbamidomethylation		
c-ions	[MH] <sup>+</sup> (av) calc	[MH] <sup>+</sup> (mono) exp
c18	1972.3	1972.2
c19	2071.4	2071.3
c20	2227.6	2227.5
c21	2284.7	2284.7
c22	2413.8	2413.5
c23	2512.9	2512.6
c24	2584.0	—*
c25	2681.1	2681.5
c26	2796.2	2795.9
c27	2867.3	2866.9
c28	2995.5	2995.8
c29	3082.5	3083.0
c30	3229.7	3230.3
c31	3328.9	3329.1
c32	3442.0	3442.1
c33	3556.1	3556.7
c34	3669.3	3668.3

\*c-ions not observed

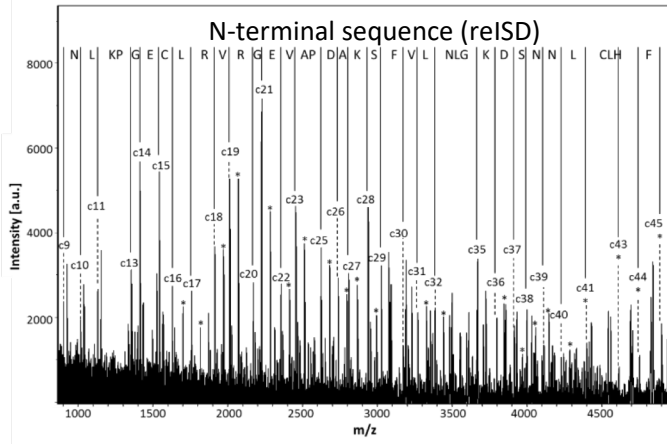
Calculated and experimental masses of c-ions observed in the linISD spectra for Gal-1—Gal-3 with SA.

	C2 and C16 - carbamidomethylation	
c-ions	[MH] <sup>+</sup> (av) calc	[MH] <sup>+</sup> (av) exp
c39	4170.8	4169.3
c40	4284.9	4285.7
c41	4398.0	4397.0
c42	4501.2	4502.1
c43	4614.3	4614.0
c44	4751.5	4750.7
c45	4898.6	4899.2
c46	5012.7	-*
c47	5109.9	5109.0
c48	5266.0	5265.0
c49	5413.2	5414.6
c50	5527.3	5525.5
c51	5598.4	5597.4
c52	5735.5	5735.9
c53	5792.6	5792.0
c54	5907.7	5908.2
c55	5978.8	5978.0
c56	6092.9	6093.0
c57	6194.0	-*
c58	6307.1	-*
c59	6406.3	6405.2
c60	6509.4	6509.0
c61	6623.5	6622.1
c62	6710.6	6712.3
c63	6838.7	6839.1
c64	6953.8	-*
c65	7010.9	-*
c66	7067.9	7067.0
c67	7139.0	7140.9
c68	7325.2	7324.8
c69	7382.2	7380.7
c70	7483.4	7485.2

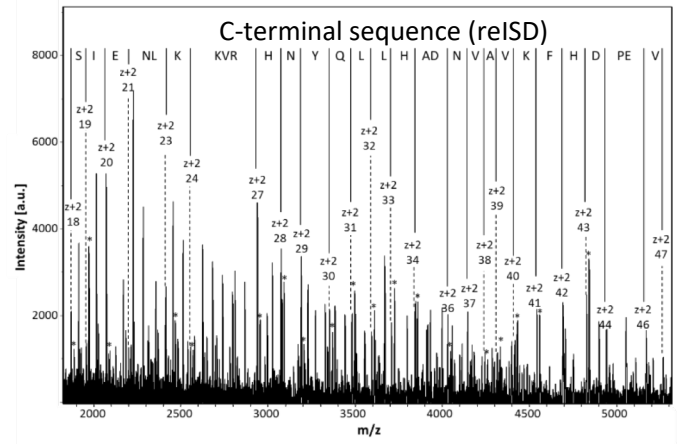
\*c-ions not observed

# Gal-1—8S—Gal-3

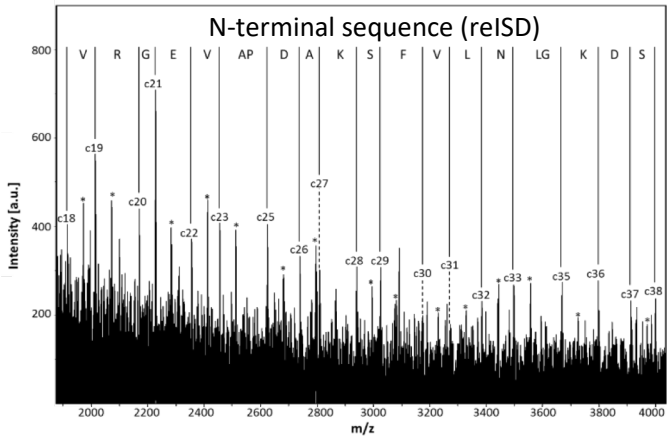
A



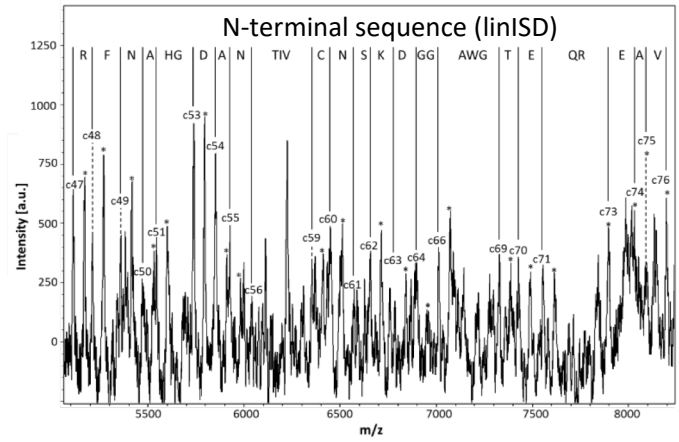
B



C



D



Calculated and experimental masses of c-ions observed in the reISD spectra for Gal-1—8S—Gal-3 with sDHB.

c-ions	C2-carbamidomethylation		C2 and C16-carbamidomethylation	
	[MH] <sup>+</sup> (mono) calc	[MH] <sup>+</sup> (mono) exp	[MH] <sup>+</sup> (mono) calc	[MH] <sup>+</sup> (mono) exp
c9	903.5	903.1	903.5	903.1
c10	1017.5	1017.6	1017.5	1017.6
c11	1130.6	1130.6	1130.6	1130.6
c12	1258.7	.*	1258.7	.*
c13	1355.7	1355.8	1355.7	1355.8
c14	1412.8	1412.8	1412.8	1412.8
c15	1541.8	1541.9	1541.8	1541.9
c16	1644.8	1643.9	1701.8	1702.0
c17	1757.9	1757.9	1814.9	1814.9
c18	1914.0	1914.0	1971.0	1971.0
c19	2013.1	2013.1	2070.1	2070.1
c20	2169.2	2169.2	2226.2	2226.2
c21	2226.2	2226.2	2283.2	2283.2
c22	2355.2	2355.1	2412.3	2412.2
c23	2454.3	2454.2	2511.3	2511.4
c24	2525.3	.*	2582.4	.*
c25	2622.4	2622.4	2679.4	2679.3
c26	2737.4	2737.3	2794.4	2794.4
c27	2808.5	2808.4	2865.5	2865.4
c28	2936.6	2936.5	2993.6	2993.7
c29	3023.6	3023.5	3080.6	3080.6
c30	3170.7	.*	3227.7	.*
c31	3269.7	3269.7	3326.7	3326.8
c32	3382.8	3383.8	3439.8	3439.8
c33	3496.9	.*	3553.9	.*
c34	3609.9	3609.0	3667.0	3667.0
c35	3666.0	3667.0	3724.0	.*
c36	3795.1	3795.1	3852.1	3852.1
c37	3910.1	3910.0	3967.1	3967.0
c38	3997.1	3996.3	4054.1	4054.3
c39	4111.2	4111.3	4168.2	4168.5
c40	4225.2	4225.4	4282.2	4282.4
c41	4338.3	.*	4395.3	4395.5
c42	4441.3	.*	4498.3	.*
c43	4554.4	4554.9	4611.4	4611.9
c44	4691.4	.*	4748.5	4749.0
c45	4838.5	.*	4895.5	4895.5

\*c-ions not observed



Calculated and experimental masses of z+2-ions observed in the reISD spectra for Gal-1—8S—Gal-3.

z+2-ions	[MH] <sup>+</sup> (mono) calc	[MH] <sup>+</sup> (mono) exp
z+2 18	1870.0	1870.1
z+2 19	1957.0	1957.1
z+2 20	2070.1	2070.2
z+2 21	2199.1	2199.3
z+2 22	2313.2	-*
z+2 23	2426.2	2426.3
z+2 24	2554.3	2554.5
z+2 25	2682.4	-*
z+2 26	2781.5	-*
z+2 27	2937.6	2936.7
z+2 28	3074.6	3074.8
z+2 29	3188.7	3188.9
z+2 30	3351.8	3351.9
z+2 31	3479.8	3479.9
z+2 32	3592.8	3593.2
z+2 33	3706.0	3706.3
z+2 34	3843.0	3843.4
z+2 35	3914.1	-*
z+2 36	4029.1	4029.3
z+2 37	4143.2	4143.6
z+2 38	4242.2	4242.8
z+2 39	4313.3	4312.9
z+2 40	4412.3	4412.7
z+2 41	4540.4	4541.0
z+2 42	4687.5	4687.2
z+2 43	4824.6	4825.0
z+2 44	4939.6	4939.4
z+2 45	5036.6	-*
z+2 46	5165.7	5165.6
z+2 47	5264.7	5264.7

\*z+2-ions not observed

Calculated and experimental masses of y-ions observed in the reISD spectra for Gal-1—8S—Gal-3.

y-ions	[MH] <sup>+</sup> (mono) calc	[MH] <sup>+</sup> (mono) exp
y18	1885.0	1885.0
y19	1972.0	1971.2
y20	2085.1	2085.1
y21	2214.1	-*
y22	2328.2	2328.4
y23	2441.2	2441.3
y24	2569.3	2568.4
y25	2697.4	2697.5
y26	2796.5	-*
y27	2952.6	2952.7
y28	3089.7	3089.8
y29	3203.7	3203.8
y30	3366.8	3366.7
y31	3494.8	3495.1
y32	3607.9	3608.0
y33	3721.0	3721.1
y34	3858.0	3858.4
y35	3929.1	3929.6
y36	4044.1	4044.6
y37	4158.2	-*
y38	4257.2	4256.6
y39	4328.3	4328.7
y40	4427.3	4427.8
y41	4555.4	4555.8
y42	4702.5	-*
y43	4839.6	4839.3
y44	4954.6	-*
y45	5051.6	5051.5

\*y-ions not observed

Calculated and experimental masses of c-ions observed in the reISD spectra for Gal-1—8S—Gal-3 with SA.

c-ions	C2-carbamidomethylation		C2 and C16-carbamidomethylation	
	[MH] <sup>+</sup> (av) calc	[MH] <sup>+</sup> (av) exp	[MH] <sup>+</sup> (av) calc	[MH] <sup>+</sup> (av) exp
c18	1915.3	1915.4	1972.3	1972.3
c19	2014.4	2014.6	2071.4	2071.3
c20	2170.6	2170.4	2227.6	2227.7
c21	2227.6	2227.7	2284.7	2284.8
c22	2356.8	2356.4	2413.8	2414.2
c23	2455.9	2456.3	2512.9	2513.0
c24	2527.0	-*	2584.0	-*
c25	2624.1	2623.7	2681.1	2680.8
c26	2739.2	2739.7	2796.2	2796.5
c27	2810.2	2810.0	2867.3	2867.3
c28	2938.4	2938.7	2995.5	2995.7
c29	3025.5	3025.8	3082.5	3082.5
c30	3172.7	3172.9	3229.7	3230.2
c31	3271.8	3272.1	3328.9	3328.8
c32	3385.0	3385.3	3442.0	3441.7
c33	3499.1	3499.3	3556.1	-*
c34	3612.2	-*	3669.3	3669.4
c35	3669.3	3669.4	3726.3	3726.5
c36	3797.4	3798.1	3854.5	-*
c37	3912.5	3912.5	3969.6	3969.8
c38	3999.6	3999.4	4056.7	-*

\*c-ions not observed

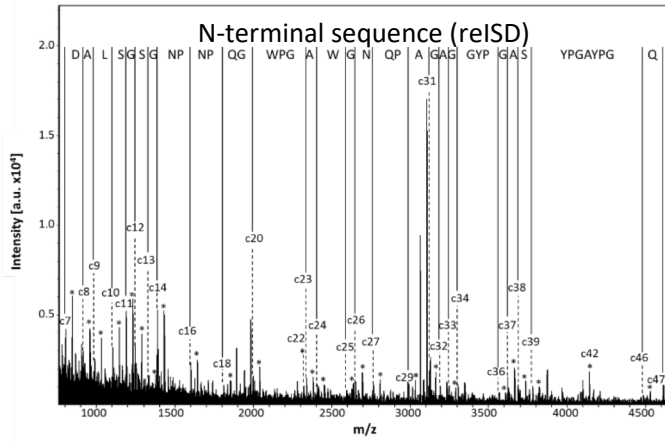
Calculated and experimental masses of c-ions observed in the linISD spectra for Gal-1—8S—Gal-3 with SA.

c-ions	C2-carbamidomethylation		C2 and C16-carbamidomethylation	
	[MH] <sup>+</sup> (av) calc	[MH] <sup>+</sup> (av) exp	[MH] <sup>+</sup> (av) calc	[MH] <sup>+</sup> (av) exp
c47	5052.8	5053.9	5109.9	5110.3
c48	5209.0	5209.4	5266.0	5266.0
c49	5356.2	5357.4	5413.2	5412.3
c50	5470.3	5469.4	5527.3	5527.5
c51	5541.3	5542.8	5598.4	5598.8
c52	5678.5	-*	5735.5	5735.8
c53	5735.5	5735.8	5792.6	5794.1
c54	5850.6	5851.0	5907.7	5909.1
c55	5921.7	5922.4	5978.8	5980.7
c56	6035.8	6037.5	6092.9	-*
c57	6136.9	-*	6194.0	-*
c58	6250.1	-*	6307.1	6308.8
c59	6349.2	6349.9	6406.3	6405.7
c60	6452.3	6451.8	6509.4	6509.5
c61	6566.4	6567.8	6623.5	-*
c62	6653.5	6654.5	6710.6	6712.4
c63	6781.7	6782.2	6838.7	6839.1
c64	6896.8	6895.8	6953.8	-*
c65	6953.8	-*	7010.9	7010.5
c66	7010.9	7010.5	7067.9	7068.6
c67	7082.0	-*	7139.0	7139.9
c68	7268.2	-*	7325.2	7324.4
c69	7325.2	7324.4	7382.2	7384.2
c70	7426.3	7427.4	7483.4	7483.7
c71	7555.4	7555.5	7612.5	7614.0
c72	7683.6	-*	7740.6	-*
c73	7839.8	-*	7896.8	7896.8
c74	7968.9	-*	8025.9	8026.8
c75	8040.0	-*	8097.0	8096.6
c76	8139.1	-*	8196.1	8197.5

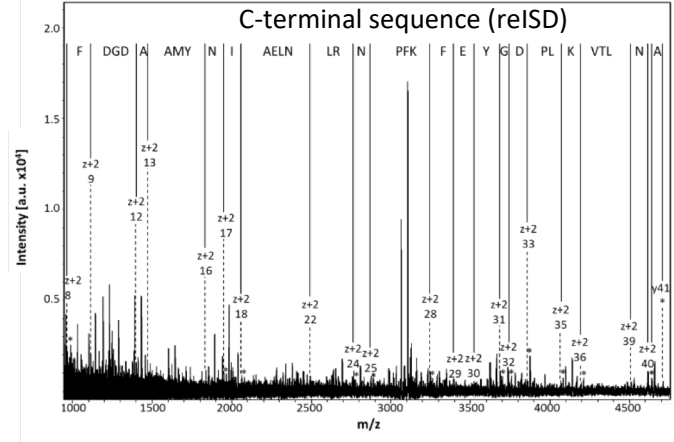
\*c-ions not observed

# Gal-3NT/1

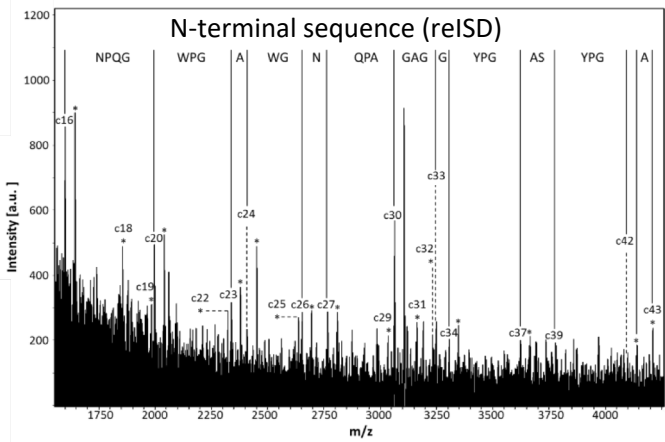
A



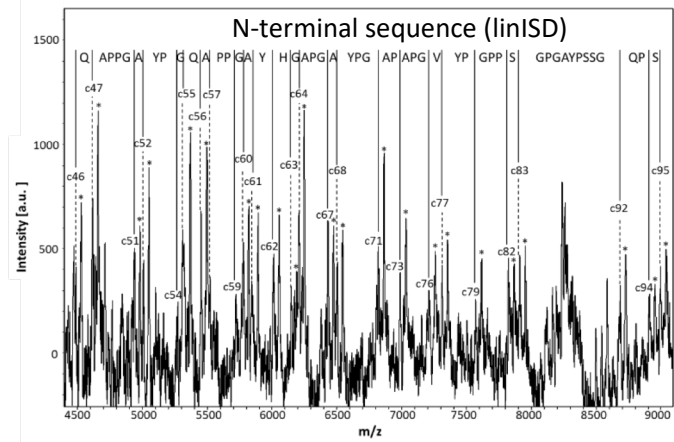
B



C



D



Calculated and experimental masses of c-ions observed in the reISD spectra for Gal-3NT/1 with sDHB.

c-ions	No modifications		N-terminal acetylation	
	[MH] <sup>+</sup> (mono) calc	[MH] <sup>+</sup> (mono) exp	[MH] <sup>+</sup> (mono) calc	[MH] <sup>+</sup> (mono) exp
c11	1053.6	1053.7	1095.6	_*
c12	1167.6	1167.7	1209.7	_*
c13	1280.7	_*	1322.7	_*
c14	1377.8	1377.8	1419.8	_*
c15	1490.9	_*	1532.9	_*
c16	1587.9	_*	1629.9	_*
c17	1644.9	1644.9	1687.0	_*
c18	1702.0	1702.1	1744.0	_*
c19	1801.0	_*	1843.0	_*
c20	1900.1	_*	1942.1	_*
c21	1997.2	_*	2039.2	_*
c22	2153.2	2153.3	2195.3	2195.3
c23	2284.3	2284.3	2326.3	2326.2
c24	2397.4	2397.5	2439.4	_*
c25	2510.5	2510.5	2552.5	2552.5
c26	2611.5	2611.5	2653.5	2653.5
c27	2724.6	2724.6	2766.6	2766.7
c28	2837.7	_*	2879.7	2879.7
c29	2894.7	2894.7	2936.7	2936.7
c30	2995.8	2996.0	3037.8	_*
c31	3094.8	3094.9	3136.8	3137.1
c32	3222.9	_*	3264.9	_*
c33	3320.0	3320.2	3362.0	3362.0
c34	3434.0	3434.1	3476.0	_*
c35	3505.0	3505.2	3547.0	3547.1
c36	3619.1	3619.3	3661.1	_*
c37	3775.2	3775.6	3817.2	_*
c38	3888.3	3888.4	3930.3	3930.2
c39	3959.3	3959.2	4001.3	4001.5
c40	4072.4	_*	4114.4	4114.6
c41	4187.4	4187.6	4229.4	_*
c42	4334.5	4334.9	4376.5	4377.0
c43	4462.6	4463.0	4504.6	_*
c44	4618.6	4619.3	4660.7	_*
c45	4675.7	4676.1	4717.7	_*
c46	4789.7	4790.3	4831.7	_*
c47	4904.7	_*	4946.8	_*
c48	5003.8	5004.5	5045.8	_*
c49	5074.8	5074.5	5116.9	_*
c50	5221.9	5222.7	5263.9	_*
c51	5359.0	5359.8	5401.0	_*
c52	5506.0	5506.4	5548.0	_*

\*c-ions not observed

Calculated and experimental masses of z+2-ions  
observed in the reISD spectra for Gal-3NT/1.

z+2-ions	[MH] <sup>+</sup> (mono) calc	[MH] <sup>+</sup> (mono) exp
z+2 8	965.5	965.7
z+2 9	1112.6	1112.8
z+2 10	1227.6	.*
z+2 11	1284.6	.*
z+2 12	1399.7	1399.8
z+2 13	1470.7	1470.9
z+2 14	1541.7	.*
z+2 15	1672.8	.*
z+2 16	1837.1	1836.1
z+2 17	1949.9	1950.1
z+2 18	2063.0	2063.0
z+2 19	2134.0	.*
z+2 20	2263.0	.*
z+2 21	2376.1	.*
z+2 22	2490.2	2490.2
z+2 23	2603.3	.*
z+2 24	2759.4	2759.6
z+2 25	2873.4	2873.7
z+2 26	2970.4	.*
z+2 27	3117.5	.*
z+2 28	3245.6	3245.8
z+2 29	3392.7	3392.7
z+2 30	3521.7	3522.0
z+2 31	3684.8	3685.0
z+2 32	3741.8	3742.2
z+2 33	3856.8	3857.6
z+2 34	3953.9	.*
z+2 35	4067.0	4067.3
z+2 36	4195.1	4195.6
z+2 37	4294.1	.*
z+2 38	4395.2	.*
z+2 39	4508.3	4508.6
z+2 40	4622.3	4622.6

\*z+2-ions not observed

Calculated and experimental masses of y-ions  
observed in the reISD spectra for Gal-3NT/1.

y-ions	[MH] <sup>+</sup> (mono) calc	[MH] <sup>+</sup> (mono) exp
y8	980.5	980.6
y9	1127.6	.*
y10	1242.7	.*
y11	1299.6	1299.8
y12	1414.7	.*
y13	1485.7	.*
y14	1556.7	.*
y15	1687.8	.*
y16	1850.8	.*
y17	1964.9	1965.1
y18	2078.0	2078.2
y19	2149.0	.*
y20	2278.1	2278.2
y21	2391.1	.*
y22	2505.2	.*
y23	2618.3	.*
y24	2774.4	2774.7
y25	2888.4	2888.6
y26	2985.5	2984.7
y27	3132.5	.*
y28	3260.6	3260.9
y29	3407.7	.*
y30	3536.7	.*
y31	3699.8	3700.3
y32	3756.8	3757.1
y33	3871.8	3872.2
y34	3968.9	3969.4
y35	4082.0	4082.2
y36	4210.1	4210.4
y37	4309.1	.*
y38	4410.2	.*
y39	4523.3	.*
y40	4637.3	4637.0
y41	4708.4	4708.0

\*y-ions not observed

Calculated and experimental masses of c-ions observed in the reISD spectra for Gal-3NT/1 with SA.

c-ions	No modification		N-terminal acetylation	
	[MH] <sup>+</sup> (mono) calc	[MH] <sup>+</sup> (mono) exp	[MH] <sup>+</sup> (mono) calc	[MH] <sup>+</sup> (mono) exp
c22	2153.2	2153.2	2195.3	2195.2
c23	2284.3	2284.2	2326.3	2326.2
c24	2397.4	2397.3	2439.4	2439.3
c25	2510.5	2510.4	2552.5	2552.4
c26	2611.5	2611.4	2653.5	2653.4
c27	2724.6	2724.5	2766.6	2766.5
c28	2837.7	2837.5	2879.7	2879.5
c29	2894.7	2894.5	2936.7	2936.6
c30	2995.8	2995.5	3037.8	3038.1
c31	3094.8	3094.7	3136.8	3136.8
c32	3222.9	-*	3264.9	-*
c33	3320.0	3319.8	3362.0	3361.5
c34	3434.0	3433.8	3476.0	3476.4
c35	3505.0	3504.9	3547.1	3546.7
c36	3619.1	3619.1	3661.1	3660.8
c37	3775.2	3775.4	3817.2	-*
c38	3888.3	3888.0	3930.3	-*
c39	3959.3	-*	4001.3	-*
c40	4072.4	4072.2	4114.4	4114.8

\*c-ions not observed

Calculated and experimental masses of c-ions observed in the linISD spectra for Gal-3NT/1 with SA.

c-ions	No modification		N-terminal acetylation		c-ions	No modification		N-terminal acetylation	
	[MH] <sup>+</sup> (av) calc	[MH] <sup>+</sup> (av) exp	[MH] <sup>+</sup> (av) calc	[MH] <sup>+</sup> (av) exp		[MH] <sup>+</sup> (av) calc	[MH] <sup>+</sup> (av) exp	[MH] <sup>+</sup> (av) calc	[MH] <sup>+</sup> (av) exp
c46	4486.7	4485.9	4528.7	4528.8	c71	6818.2	6819.2	6860.2	6860.3
c47	4614.8	4613.6	4656.9	4658.3	c72	6889.3	-*	6931.3	-*
c48	4685.9	-*	4727.9	-*	c73	6986.4	6986.8	7028.4	7029.2
c49	4783.0	-*	4825.0	-*	c74	7057.5	-*	7099.5	-*
c50	4880.1	-*	4922.2	-*	c75	7154.6	-*	7196.6	-*
c51	4937.2	4937.5	4979.2	4979.8	c76	7211.6	7210.7	7253.7	7253.3
c52	5008.3	5008.6	5050.3	5048.9	c77	7310.8	7311.7	7352.8	7351.1
c53	5171.4	-*	5213.5	-*	c78	7473.9	-*	7516.0	-*
c54	5268.5	5267.6	5310.6	5309.5	c79	7571.0	7569.8	7613.1	7614.9
c55	5325.6	5324.4	5367.6	5367.5	c80	7628.1	-*	7670.1	-*
c56	5453.7	5453.8	5495.8	5495.1	c81	7725.2	-*	7767.3	-*
c57	5524.8	5524.8	5566.8	-*	c82	7822.3	7823.5	7864.4	7865.1
c58	5621.9	-*	5664.0	-*	c83	7909.4	7910.8	7951.4	7953.0
c59	5719.0	5719.9	5761.1	-*	c84	7966.5	-*	8008.5	-*
c60	5776.1	5774.5	5818.1	5818.3	c85	8063.6	-*	8105.6	-*
c61	5847.2	5846.0	5889.2	5889.3	c86	8120.6	-*	8162.7	8162.1
c62	6010.3	6011.8	6052.4	6050.9	c87	8191.7	-*	8233.7	-*
c63	6147.5	6147.8	6189.5	6187.8	c88	8354.9	-*	8396.9	-*
c64	6204.5	6203.0	6246.6	6247.6	c89	8452.0	-*	8494.0	-*
c65	6275.6	-*	6317.6	-*	c90	8539.1	-*	8581.1	-*
c66	6372.7	-*	6414.6	-*	c91	8626.1	-*	8668.2	-*
c67	6429.8	6429.1	6471.8	6470.8	c92	8683.2	8684.9	8725.2	-*
c68	6500.8	6499.3	6542.9	6541.6	c93	8811.3	-*	8853.4	-*
c69	6664.0	-*	6706.1	-*	c94	8908.4	8909.9	8950.5	8951.1
c70	6761.1	-*	6803.2	6802.9	c95	8995.5	8996.6	9037.6	9038.7

\*c-ions not observed