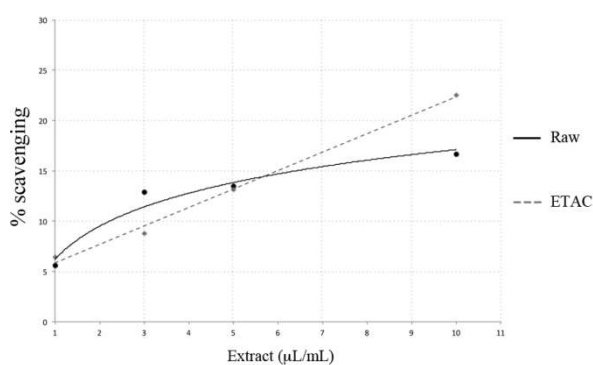


**Figure S1.** Chemical structures of the most abundant compounds present in *Arabidopsis thaliana* EtOAc extract. R = O-rhamnose; R<sup>1</sup> = O-hexose; R<sup>2</sup> = O-glucose.



**Figure S2.** DPPH<sup>•</sup> scavenging activity of a raw juice and an EtOAc extract from *Arabidopsis thaliana* seedlings. DPPH<sup>•</sup> scavenging capacity was estimated from the difference in absorbance with or without antioxidants and expressed as percent DPPH<sup>•</sup> bleaching.