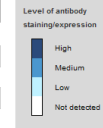
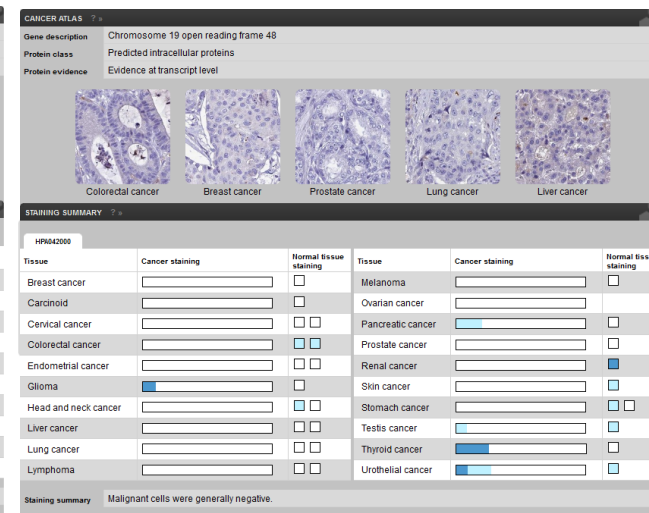
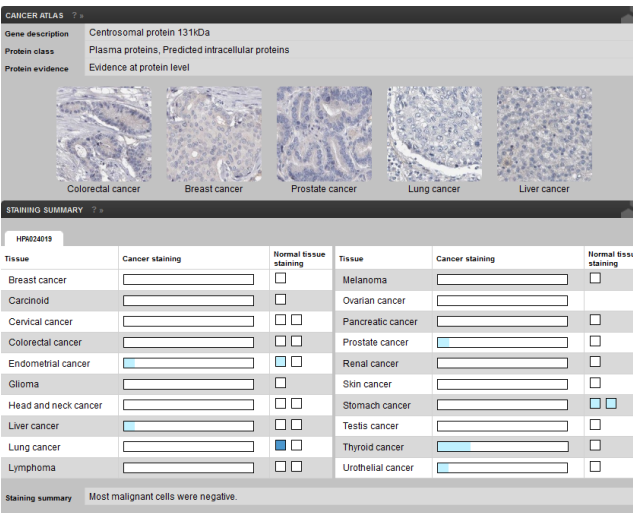
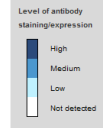
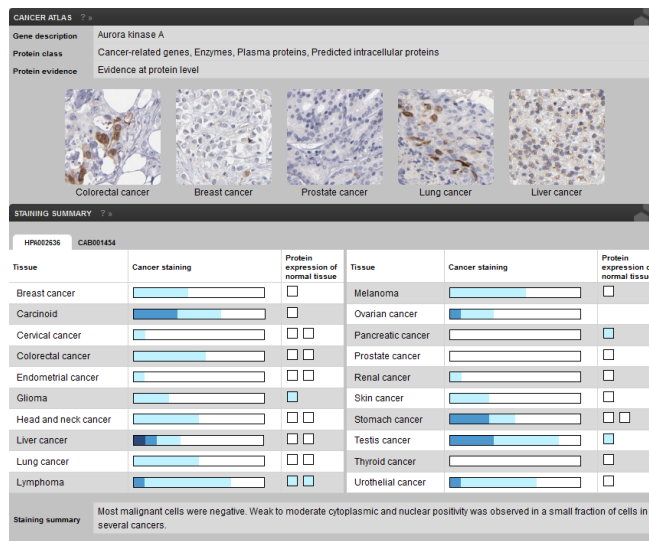
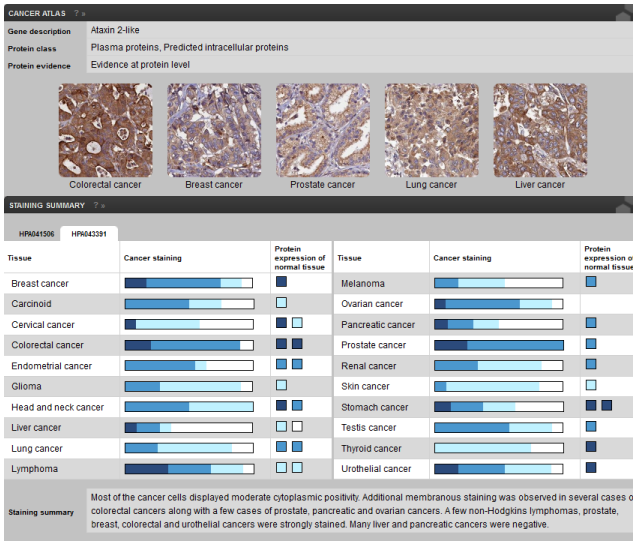
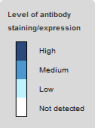
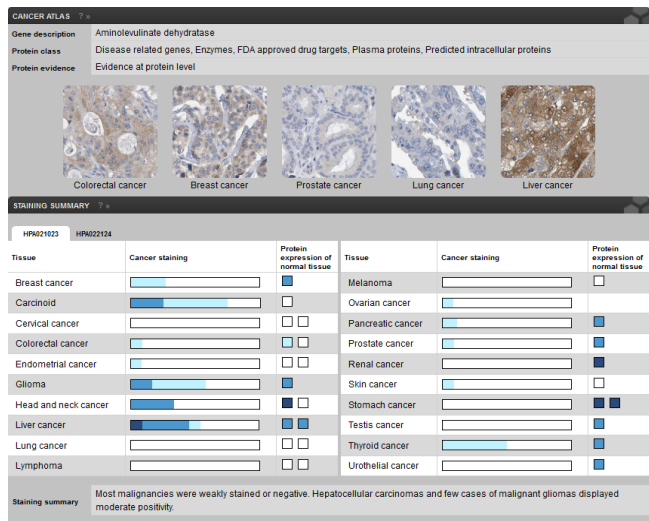
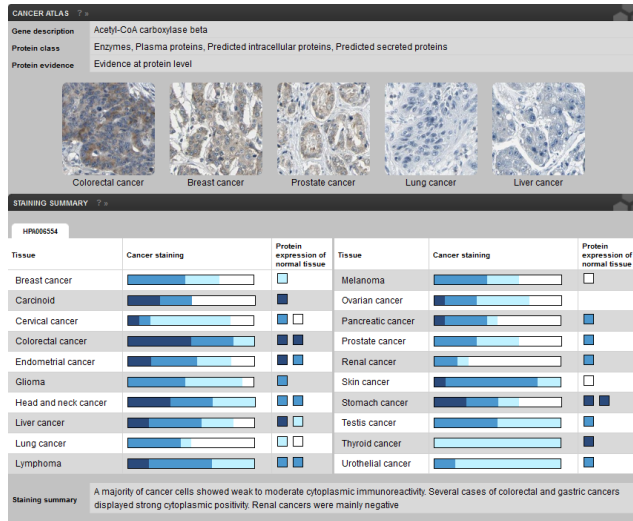
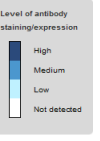
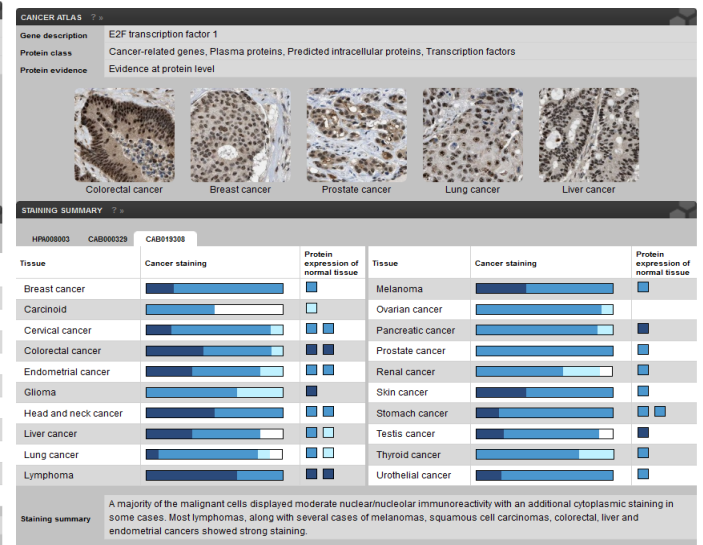
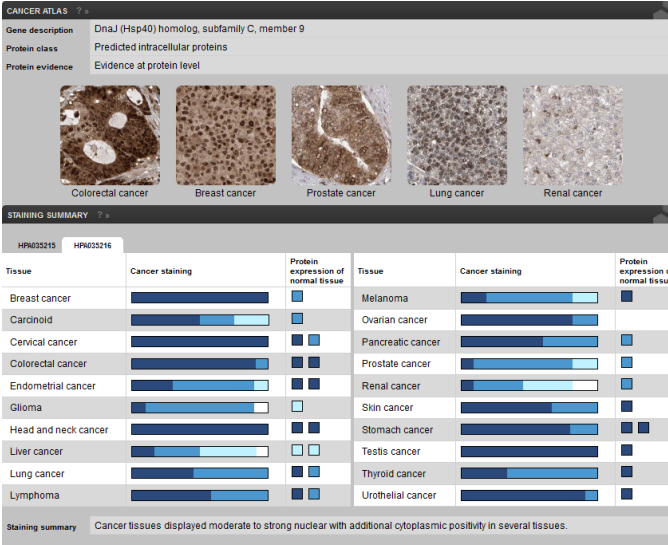
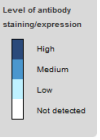
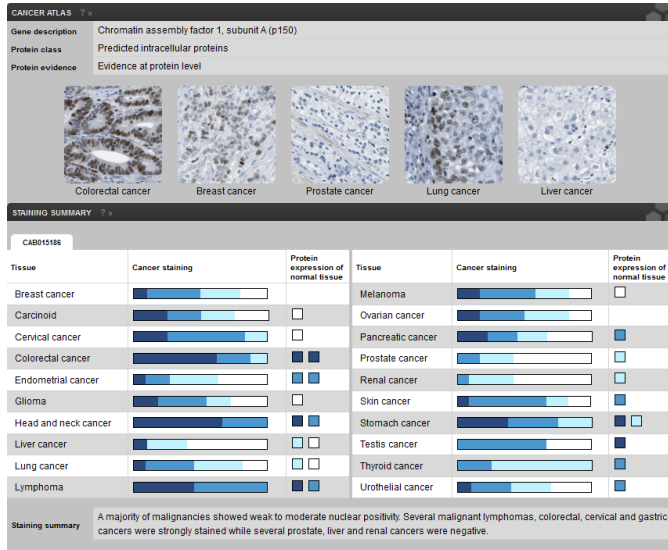
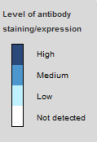
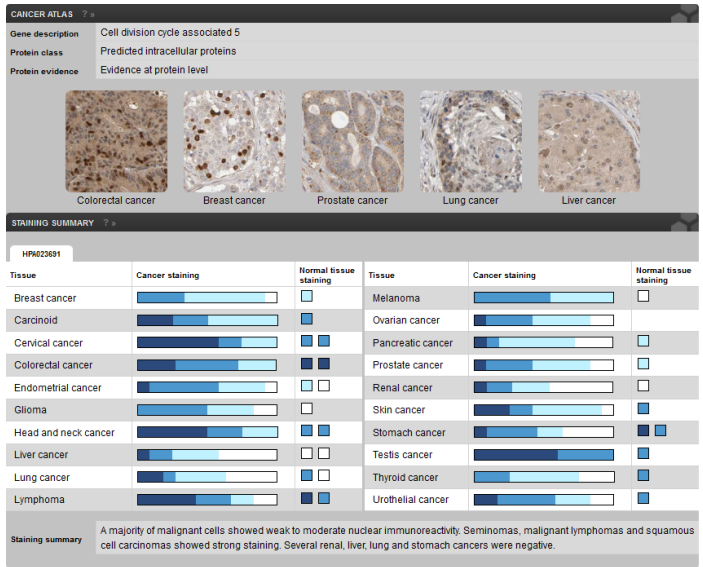
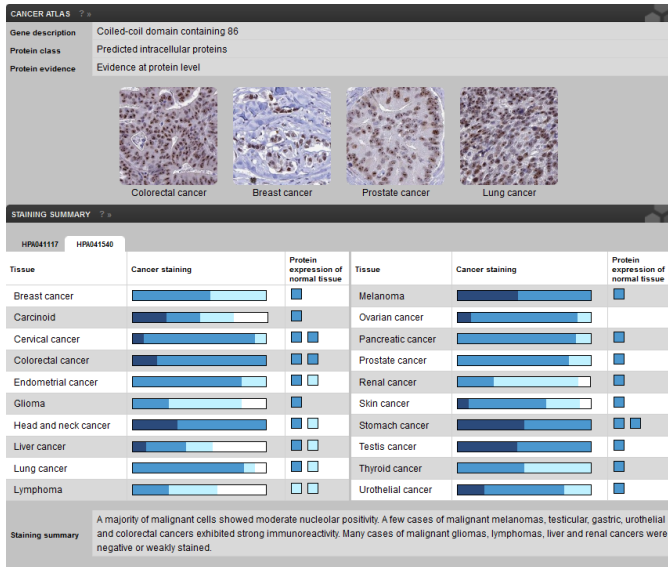


# Supplementary fig:





**CANCER ATLAS**

Gene description: Euchromatic histone-lysine N-methyltransferase 2  
 Protein class: Enzymes, Plasma proteins, Predicted intracellular proteins, Predicted secreted proteins  
 Protein evidence: Evidence at protein level

Colorectal cancer Breast cancer Prostate cancer Lung cancer Liver cancer

**STAINING SUMMARY**

HPA05550

Tissue	Cancer staining	Protein expression of normal tissue	Tissue	Cancer staining	Protein expression of normal tissue
Breast cancer	Medium	Not detected	Melanoma	Medium	Not detected
Carcinoid	Medium	Not detected	Ovarian cancer	Medium	Not detected
Cervical cancer	Medium	Not detected	Pancreatic cancer	Medium	Not detected
Colorectal cancer	Medium	Not detected	Prostate cancer	Medium	Not detected
Endometrial cancer	Medium	Not detected	Renal cancer	Medium	Not detected
Glioma	Medium	Not detected	Skin cancer	Medium	Not detected
Head and neck cancer	Medium	Not detected	Stomach cancer	Medium	Not detected
Liver cancer	Medium	Not detected	Testis cancer	Medium	Not detected
Lung cancer	Medium	Not detected	Thyroid cancer	Medium	Not detected
Lymphoma	Medium	Not detected	Urothelial cancer	Medium	Not detected

Staining summary: Few cases of testis cancers along with occasional cases of head and neck cancers, malignant carcinoids and endometrial cancers exhibited strong nuclear staining. Several cases of malignant gliomas, thyroid, urothelial, skin cancers along with few cases of breast, ovarian, cervix, lung, renal, stomach and pancreatic cancers displayed moderate positivity. Remaining malignant tissues were weakly stained or negative.

**CANCER ATLAS**

Gene description: Flap structure-specific endonuclease 1  
 Protein class: Cancer-related genes, Plasma proteins, Predicted intracellular proteins  
 Protein evidence: Evidence at protein level

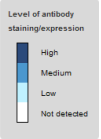
Colorectal cancer Breast cancer Prostate cancer Lung cancer Liver cancer

**STAINING SUMMARY**

HPA06748 CAB00262

Tissue	Cancer staining	Protein expression of normal tissue	Tissue	Cancer staining	Protein expression of normal tissue
Breast cancer	Medium	Not detected	Melanoma	Medium	Not detected
Carcinoid	Medium	Not detected	Ovarian cancer	Medium	Not detected
Cervical cancer	Medium	Not detected	Pancreatic cancer	Medium	Not detected
Colorectal cancer	Medium	Not detected	Prostate cancer	Medium	Not detected
Endometrial cancer	Medium	Not detected	Renal cancer	Medium	Not detected
Glioma	Medium	Not detected	Skin cancer	Medium	Not detected
Head and neck cancer	Medium	Not detected	Stomach cancer	Medium	Not detected
Liver cancer	Medium	Not detected	Testis cancer	Medium	Not detected
Lung cancer	Medium	Not detected	Thyroid cancer	Medium	Not detected
Lymphoma	Medium	Not detected	Urothelial cancer	Medium	Not detected

Staining summary: A majority of malignant tissues displayed moderate to strong nuclear immunoreactivity. Several renal cancers were weakly stained or negative.



**CANCER ATLAS**

Gene description: Forkhead box M1  
 Protein class: Cancer-related genes, Predicted intracellular proteins, Transcription factors  
 Protein evidence: Evidence at protein level

Colorectal cancer Breast cancer Prostate cancer Lung cancer Liver cancer

**STAINING SUMMARY**

HPA02974 HPA02975 HPA02976 CAB017832

Tissue	Cancer staining	Protein expression of normal tissue	Tissue	Cancer staining	Protein expression of normal tissue
Breast cancer	Medium	Not detected	Melanoma	Medium	Not detected
Carcinoid	Medium	Not detected	Ovarian cancer	Medium	Not detected
Cervical cancer	Medium	Not detected	Pancreatic cancer	Medium	Not detected
Colorectal cancer	Medium	Not detected	Prostate cancer	Medium	Not detected
Endometrial cancer	Medium	Not detected	Renal cancer	Medium	Not detected
Glioma	Medium	Not detected	Skin cancer	Medium	Not detected
Head and neck cancer	Medium	Not detected	Stomach cancer	Medium	Not detected
Liver cancer	Medium	Not detected	Testis cancer	Medium	Not detected
Lung cancer	Medium	Not detected	Thyroid cancer	Medium	Not detected
Lymphoma	Medium	Not detected	Urothelial cancer	Medium	Not detected

Staining summary: Malignant cells exhibited moderate nuclear and cytoplasmic immunoreactivity. Many cases of renal, cervical and ovarian cancers as well as a few cases of colorectal and gastric cancers showed strong nuclear staining. Most hepatocellular carcinomas were weakly stained.

**CANCER ATLAS**

Gene description: Forkhead box N3  
 Protein class: Predicted intracellular proteins, Transcription factors  
 Protein evidence: Evidence at protein level

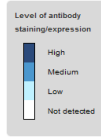
Colorectal cancer Breast cancer Prostate cancer Lung cancer Liver cancer

**STAINING SUMMARY**

HPA05909

Tissue	Cancer staining	Protein expression of normal tissue	Tissue	Cancer staining	Protein expression of normal tissue
Breast cancer	Medium	Not detected	Melanoma	Medium	Not detected
Carcinoid	Medium	Not detected	Ovarian cancer	Medium	Not detected
Cervical cancer	Medium	Not detected	Pancreatic cancer	Medium	Not detected
Colorectal cancer	Medium	Not detected	Prostate cancer	Medium	Not detected
Endometrial cancer	Medium	Not detected	Renal cancer	Medium	Not detected
Glioma	Medium	Not detected	Skin cancer	Medium	Not detected
Head and neck cancer	Medium	Not detected	Stomach cancer	Medium	Not detected
Liver cancer	Medium	Not detected	Testis cancer	Medium	Not detected
Lung cancer	Medium	Not detected	Thyroid cancer	Medium	Not detected
Lymphoma	Medium	Not detected	Urothelial cancer	Medium	Not detected

Staining summary: Most cancer cells displayed moderate cytoplasmic and/or nuclear immunoreactivity. Many prostate, testis, renal, stomach, pancreatic and liver cancers were negative.



**CANCER ATLAS**

Gene description: Solute carrier family 52 (riboflavin transporter), member 2  
 Protein class: Disease related genes, FDA approved drug targets, Predicted membrane proteins, Predicted secreted proteins, Transporters  
 Protein evidence: Evidence at protein level

Colorectal cancer Breast cancer Prostate cancer Lung cancer Liver cancer

**STAINING SUMMARY**

HPA06306

Tissue	Cancer staining	Normal tissue staining	Tissue	Cancer staining	Normal tissue staining
Breast cancer	Medium	Not detected	Melanoma	Medium	Not detected
Carcinoid	Medium	Not detected	Ovarian cancer	Medium	Not detected
Cervical cancer	Medium	Not detected	Pancreatic cancer	Medium	Not detected
Colorectal cancer	Medium	Not detected	Prostate cancer	Medium	Not detected
Endometrial cancer	Medium	Not detected	Renal cancer	Medium	Not detected
Glioma	Medium	Not detected	Skin cancer	Medium	Not detected
Head and neck cancer	Medium	Not detected	Stomach cancer	Medium	Not detected
Liver cancer	Medium	Not detected	Testis cancer	Medium	Not detected
Lung cancer	Medium	Not detected	Thyroid cancer	Medium	Not detected
Lymphoma	Medium	Not detected	Urothelial cancer	Medium	Not detected

Staining summary: Most cancer tissues showed weak to moderate cytoplasmic positivity with additional membranous and/or nuclear staining. Few cases of colorectal, stomach and ovarian cancers displayed strong immunoreactivity. Thyroid cancers along with several renal and liver cancers were negative.

**CANCER ATLAS**

Gene description: GTP binding protein 3 (mitochondrial)  
 Protein class: Mitochondrial proteins, Predicted intracellular proteins  
 Protein evidence: Evidence at protein level

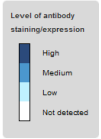
Colorectal cancer Breast cancer Prostate cancer Lung cancer

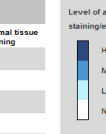
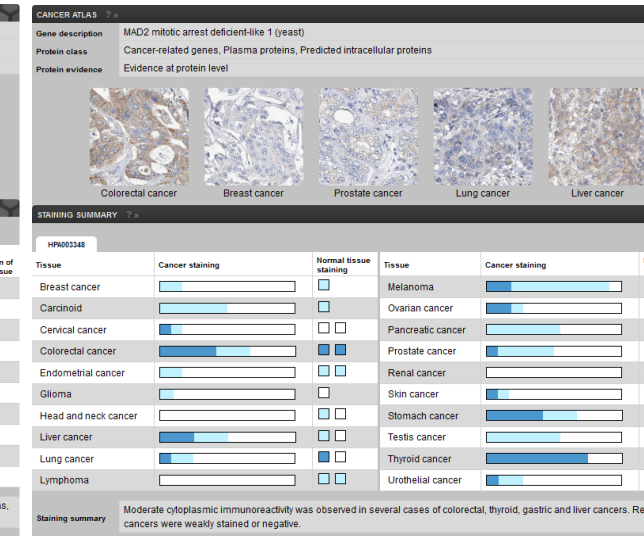
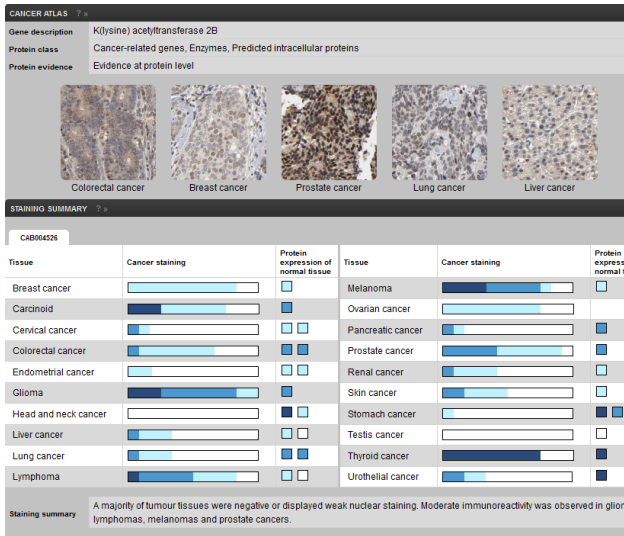
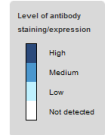
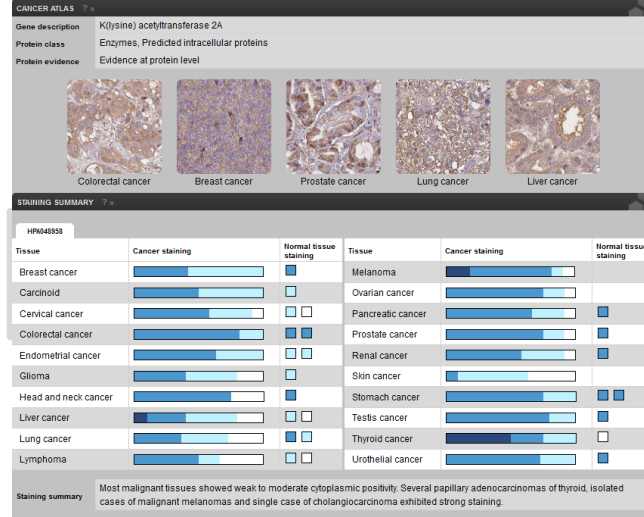
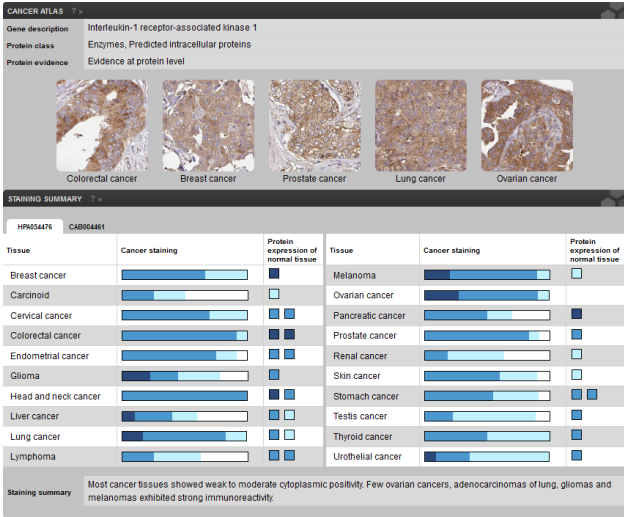
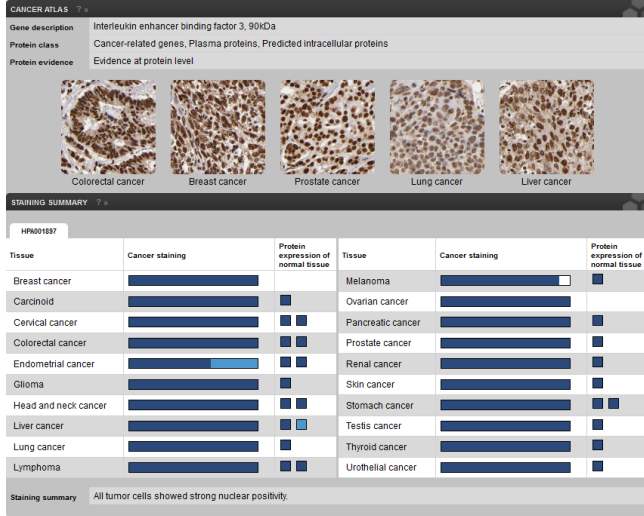
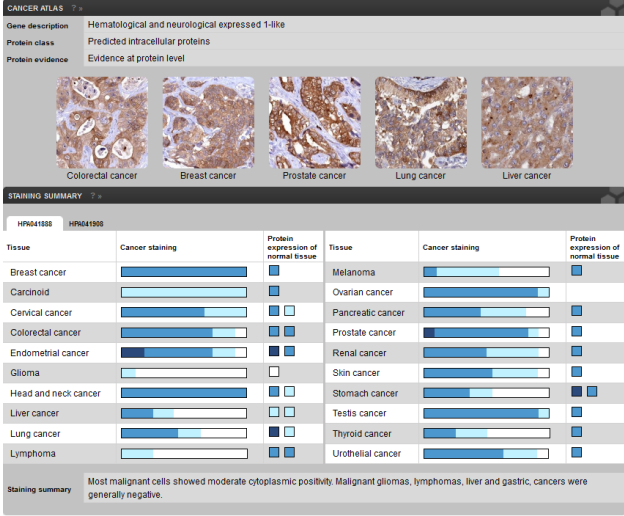
**STAINING SUMMARY**

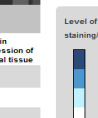
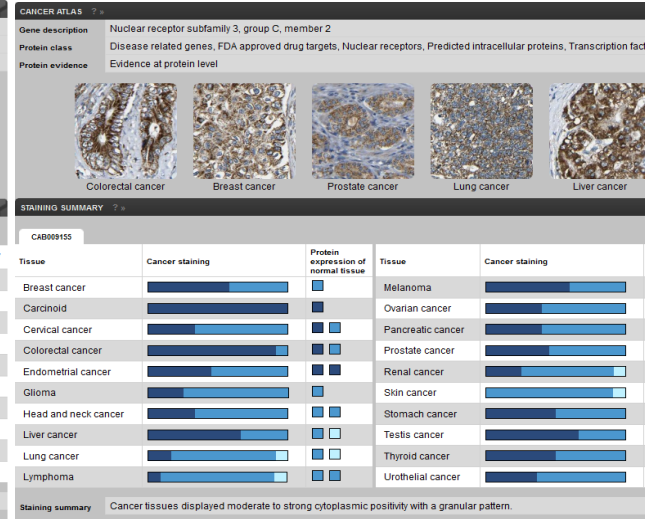
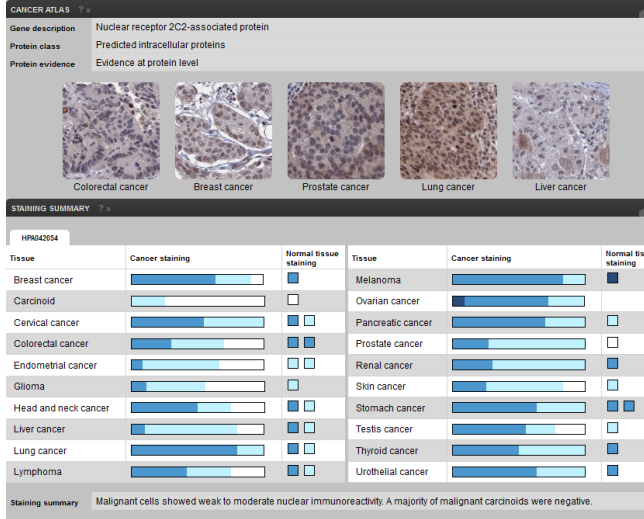
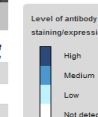
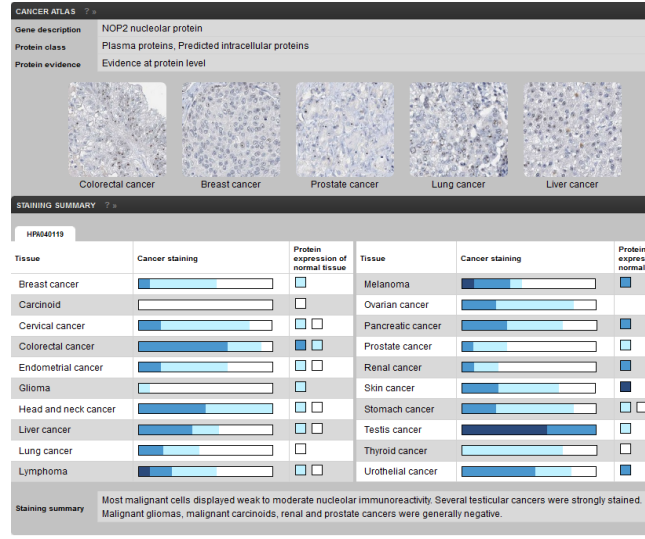
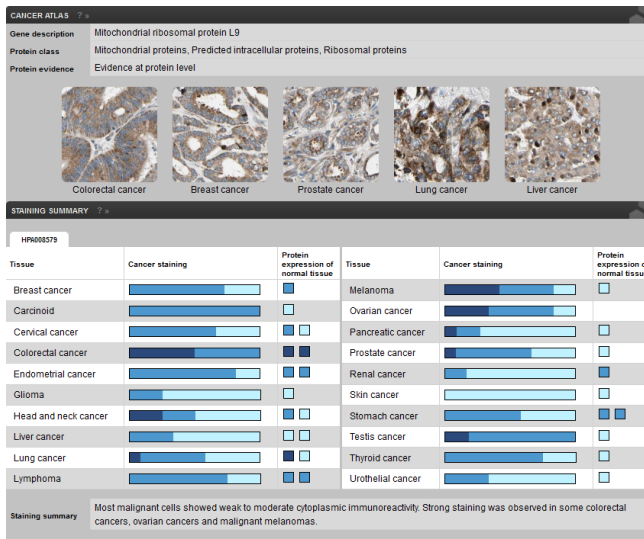
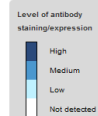
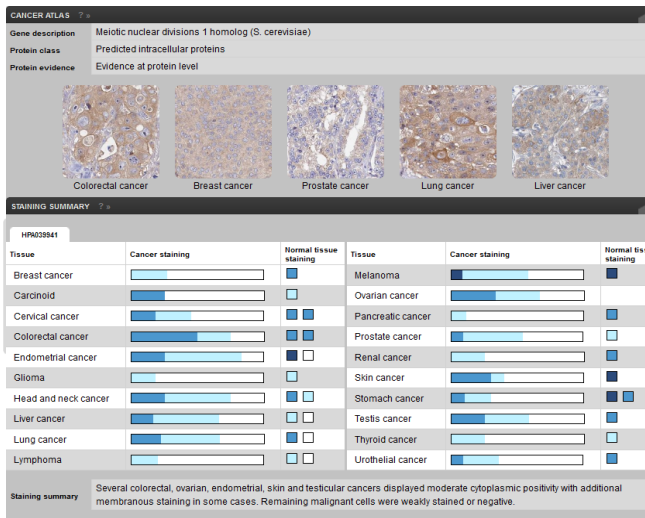
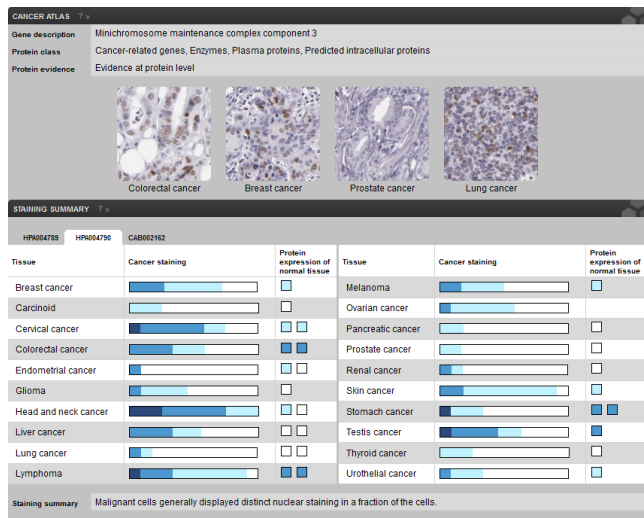
HPA04158

Tissue	Cancer staining	Protein expression of normal tissue	Tissue	Cancer staining	Protein expression of normal tissue
Breast cancer	Medium	Not detected	Melanoma	Medium	Not detected
Carcinoid	Medium	Not detected	Ovarian cancer	Medium	Not detected
Cervical cancer	Medium	Not detected	Pancreatic cancer	Medium	Not detected
Colorectal cancer	Medium	Not detected	Prostate cancer	Medium	Not detected
Endometrial cancer	Medium	Not detected	Renal cancer	Medium	Not detected
Glioma	Medium	Not detected	Skin cancer	Medium	Not detected
Head and neck cancer	Medium	Not detected	Stomach cancer	Medium	Not detected
Liver cancer	Medium	Not detected	Testis cancer	Medium	Not detected
Lung cancer	Medium	Not detected	Thyroid cancer	Medium	Not detected
Lymphoma	Medium	Not detected	Urothelial cancer	Medium	Not detected

Staining summary: Cancer cells displayed moderate to strong cytoplasmic positivity with a granular pattern.







**CANCER ATLAS**

Gene description: NOP2/Sun domain family, member 5  
 Protein class: Disease related genes, Predicted intracellular proteins  
 Protein evidence: Evidence at protein level

Colorectal cancer Breast cancer Prostate cancer Lung cancer Liver cancer

**STAINING SUMMARY**

HPM02936

Tissue	Cancer staining	Normal tissue staining	Tissue	Cancer staining	Normal tissue staining
Breast cancer	Low	Not detected	Melanoma	Low	Not detected
Cardioid	Not detected	Not detected	Ovarian cancer	Low	Not detected
Cervical cancer	Low	Not detected	Pancreatic cancer	Low	Not detected
Colorectal cancer	Low	Not detected	Prostate cancer	Low	Not detected
Endometrial cancer	Low	Not detected	Renal cancer	Low	Not detected
Glioma	Low	Not detected	Skin cancer	Low	Not detected
Head and neck cancer	Low	Not detected	Stomach cancer	Low	Not detected
Liver cancer	Low	Not detected	Testis cancer	Low	Not detected
Lung cancer	Low	Not detected	Thyroid cancer	Low	Not detected
Lymphoma	Low	Not detected	Urothelial cancer	Low	Not detected

Staining summary: A majority of malignancies were weakly stained or negative. Strong nuclear and cytoplasmic positivity was observed in prostate cancers. Moderate to strong nuclear and/or cytoplasmic staining was observed in several malignant melanomas, breast and liver cancers.

**CANCER ATLAS**

Gene description: Nuclaporin 85kDa  
 Protein class: Cytoskeleton related proteins, Predicted intracellular proteins, Predicted secreted proteins  
 Protein evidence: Evidence at protein level

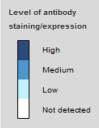
Colorectal cancer Breast cancer Prostate cancer Lung cancer Liver cancer

**STAINING SUMMARY**

HPM02595

Tissue	Cancer staining	Protein expression of normal tissue	Tissue	Cancer staining	Protein expression of normal tissue
Breast cancer	Low	Not detected	Melanoma	Low	Not detected
Cardioid	Low	Not detected	Ovarian cancer	Low	Not detected
Cervical cancer	Low	Not detected	Pancreatic cancer	Low	Not detected
Colorectal cancer	Low	Not detected	Prostate cancer	Low	Not detected
Endometrial cancer	Low	Not detected	Renal cancer	Low	Not detected
Glioma	Low	Not detected	Skin cancer	Low	Not detected
Head and neck cancer	Low	Not detected	Stomach cancer	Low	Not detected
Liver cancer	Low	Not detected	Testis cancer	Low	Not detected
Lung cancer	Low	Not detected	Thyroid cancer	Low	Not detected
Lymphoma	Low	Not detected	Urothelial cancer	Low	Not detected

Staining summary: Most cancer tissues showed weak to moderate nucleolar immunoreactivity. Few cases of melanomas, squamous cell carcinomas of skin and testicular cancers were strongly stained.



**CANCER ATLAS**

Gene description: Nuclear transport factor 2  
 Protein class: Plasma proteins, Predicted intracellular proteins  
 Protein evidence: Evidence at protein level

Colorectal cancer Breast cancer Prostate cancer Lung cancer Liver cancer

**STAINING SUMMARY**

HPM04915 HPM04936

Tissue	Cancer staining	Protein expression of normal tissue	Tissue	Cancer staining	Protein expression of normal tissue
Breast cancer	Low	Not detected	Melanoma	Low	Not detected
Cardioid	Low	Not detected	Ovarian cancer	Low	Not detected
Cervical cancer	Low	Not detected	Pancreatic cancer	Low	Not detected
Colorectal cancer	Low	Not detected	Prostate cancer	Low	Not detected
Endometrial cancer	Low	Not detected	Renal cancer	Low	Not detected
Glioma	Low	Not detected	Skin cancer	Low	Not detected
Head and neck cancer	Low	Not detected	Stomach cancer	Low	Not detected
Liver cancer	Low	Not detected	Testis cancer	Low	Not detected
Lung cancer	Low	Not detected	Thyroid cancer	Low	Not detected
Lymphoma	Low	Not detected	Urothelial cancer	Low	Not detected

Staining summary: Most malignant cells showed weak to moderate cytoplasmic and occasional membranous immunoreactivity. A rare case of malignant glioma showed strong cytoplasmic positivity. Malignant lymphomas, cervical, lung, liver, renal, urothelial and gastric cancers were generally negative.

**CANCER ATLAS**

Gene description: Nucleic acid binding protein 2  
 Protein class: Predicted intracellular proteins  
 Protein evidence: Evidence at protein level

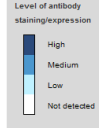
Colorectal cancer Breast cancer Prostate cancer Lung cancer Liver cancer

**STAINING SUMMARY**

HPM04615

Tissue	Cancer staining	Protein expression of normal tissue	Tissue	Cancer staining	Protein expression of normal tissue
Breast cancer	Low	Not detected	Melanoma	Low	Not detected
Cardioid	Low	Not detected	Ovarian cancer	Low	Not detected
Cervical cancer	Low	Not detected	Pancreatic cancer	Low	Not detected
Colorectal cancer	Low	Not detected	Prostate cancer	Low	Not detected
Endometrial cancer	Low	Not detected	Renal cancer	Low	Not detected
Glioma	Low	Not detected	Skin cancer	Low	Not detected
Head and neck cancer	Low	Not detected	Stomach cancer	Low	Not detected
Liver cancer	Low	Not detected	Testis cancer	Low	Not detected
Lung cancer	Low	Not detected	Thyroid cancer	Low	Not detected
Lymphoma	Low	Not detected	Urothelial cancer	Low	Not detected

Staining summary: Most malignant cells showed weak to moderate nuclear positivity. Many malignant melanomas along with cases of urothelial, gastric and pancreatic cancers were strongly stained. A majority of malignant lymphomas and endometrial cancers were negative.



**CANCER ATLAS**

Gene description: Origin recognition complex, subunit 6  
 Protein class: Disease related genes, Predicted intracellular proteins  
 Protein evidence: Evidence at protein level

Colorectal cancer Breast cancer Prostate cancer Lung cancer Liver cancer

**STAINING SUMMARY**

CAB016330

Tissue	Cancer staining	Protein expression of normal tissue	Tissue	Cancer staining	Protein expression of normal tissue
Breast cancer	Low	Not detected	Melanoma	Low	Not detected
Cardioid	Low	Not detected	Ovarian cancer	Low	Not detected
Cervical cancer	Low	Not detected	Pancreatic cancer	Low	Not detected
Colorectal cancer	Low	Not detected	Prostate cancer	Low	Not detected
Endometrial cancer	Low	Not detected	Renal cancer	Low	Not detected
Glioma	Low	Not detected	Skin cancer	Low	Not detected
Head and neck cancer	Low	Not detected	Stomach cancer	Low	Not detected
Liver cancer	Low	Not detected	Testis cancer	Low	Not detected
Lung cancer	Low	Not detected	Thyroid cancer	Low	Not detected
Lymphoma	Low	Not detected	Urothelial cancer	Low	Not detected

Staining summary: A majority of malignancies showed weak to moderate nuclear positivity combined with cases of cytoplasmic staining. Prostate and renal cancers were generally negative.

**CANCER ATLAS**

Gene description: Polycomb group ring finger 5  
 Protein class: Predicted intracellular proteins  
 Protein evidence: Evidence at protein level

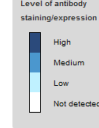
Colorectal cancer Breast cancer Prostate cancer Lung cancer Liver cancer

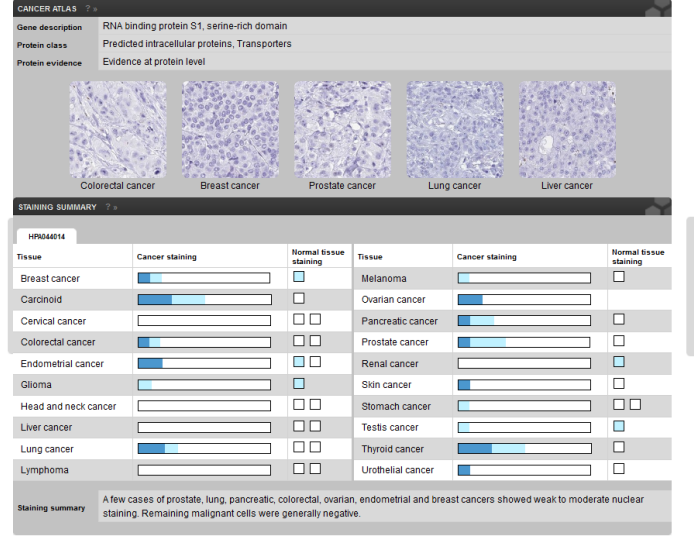
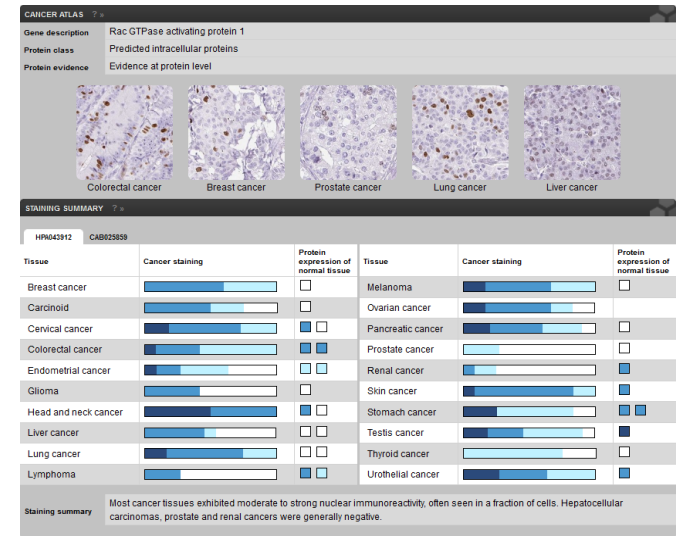
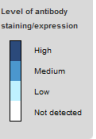
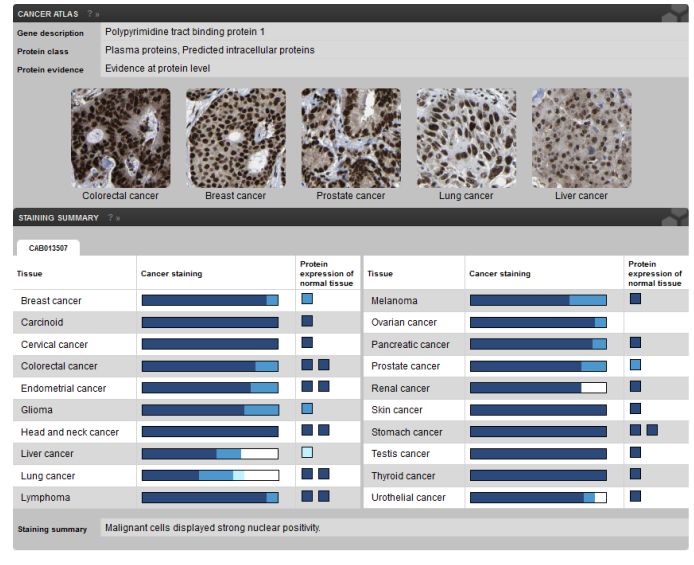
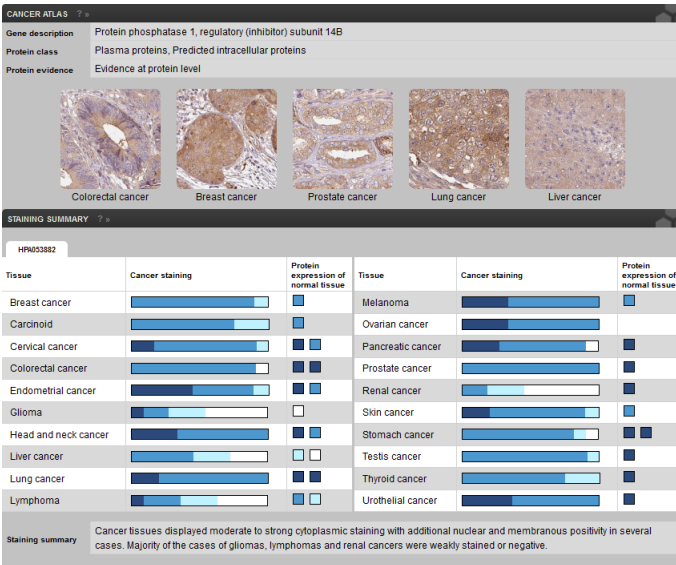
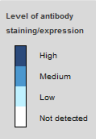
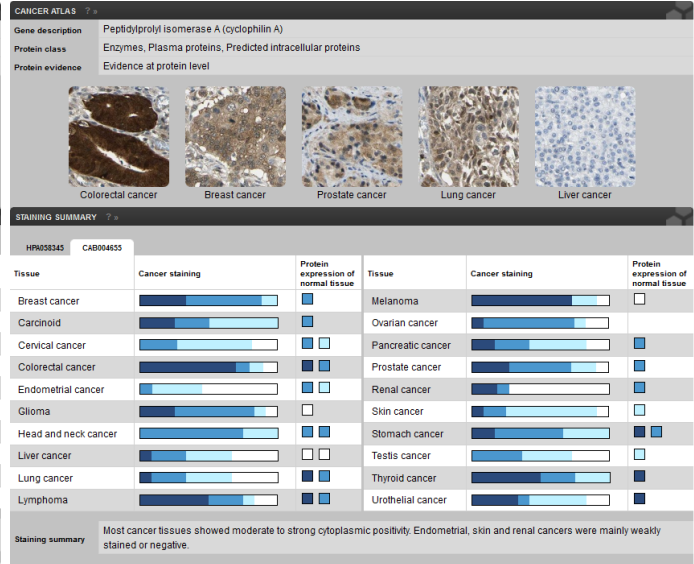
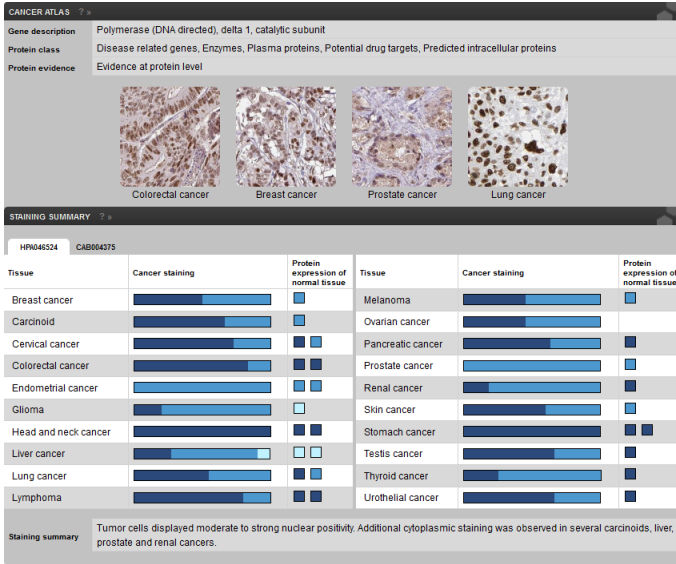
**STAINING SUMMARY**

HPM03849

Tissue	Cancer staining	Normal tissue staining	Tissue	Cancer staining	Normal tissue staining
Breast cancer	Low	Not detected	Melanoma	Low	Not detected
Cardioid	Low	Not detected	Ovarian cancer	Low	Not detected
Cervical cancer	Low	Not detected	Pancreatic cancer	Low	Not detected
Colorectal cancer	Low	Not detected	Prostate cancer	Low	Not detected
Endometrial cancer	Low	Not detected	Renal cancer	Low	Not detected
Glioma	Low	Not detected	Skin cancer	Low	Not detected
Head and neck cancer	Low	Not detected	Stomach cancer	Low	Not detected
Liver cancer	Low	Not detected	Testis cancer	Low	Not detected
Lung cancer	Low	Not detected	Thyroid cancer	Low	Not detected
Lymphoma	Low	Not detected	Urothelial cancer	Low	Not detected

Staining summary: A fraction of cases in most malignancies showed moderate nucleolar immunoreactivity. Malignant carcinoid and cervical cancers were negative.





**CANCER ATLAS**

Gene description: Ribosomal protein L36a  
 Protein class: Predicted intracellular proteins, Ribosomal proteins  
 Protein evidence: Evidence at protein level

Colorectal cancer Breast cancer Prostate cancer Lung cancer Liver cancer

**STAINING SUMMARY**

HP063979

Tissue	Cancer staining	Normal tissue staining	Tissue	Cancer staining	Normal tissue staining
Breast cancer	Low	Not detected	Melanoma	Low	Not detected
Cardioid	Not detected	Not detected	Ovarian cancer	Not detected	Not detected
Cervical cancer	Low	Not detected	Pancreatic cancer	Low	Not detected
Colorectal cancer	Low	Not detected	Prostate cancer	Low	Not detected
Endometrial cancer	Low	Not detected	Renal cancer	Low	Not detected
Glioma	High	Not detected	Skin cancer	Low	Not detected
Head and neck cancer	Low	Not detected	Stomach cancer	Low	Not detected
Liver cancer	Low	Not detected	Testis cancer	Low	Not detected
Lung cancer	Low	Not detected	Thyroid cancer	Low	Not detected
Lymphoma	Not detected	Not detected	Urothelial cancer	Low	Not detected

Staining summary: Cases of gliomas displayed strong cytoplasmic staining while a few breast, prostate and liver cancers showed weak to moderate positivity. Remaining cancers were generally negative.

**CANCER ATLAS**

Gene description: Serum amyloid A-like 1  
 Protein class: Predicted intracellular proteins  
 Protein evidence: Evidence at protein level

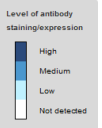
Colorectal cancer Breast cancer Prostate cancer Lung cancer Liver cancer

**STAINING SUMMARY**

HP062904

Tissue	Cancer staining	Normal tissue staining	Tissue	Cancer staining	Normal tissue staining
Breast cancer	High	Not detected	Melanoma	High	Not detected
Cardioid	High	Not detected	Ovarian cancer	High	Not detected
Cervical cancer	High	Not detected	Pancreatic cancer	High	Not detected
Colorectal cancer	High	Not detected	Prostate cancer	High	Not detected
Endometrial cancer	High	Not detected	Renal cancer	High	Not detected
Glioma	High	Not detected	Skin cancer	High	Not detected
Head and neck cancer	High	Not detected	Stomach cancer	High	Not detected
Liver cancer	High	Not detected	Testis cancer	High	Not detected
Lung cancer	High	Not detected	Thyroid cancer	High	Not detected
Lymphoma	High	Not detected	Urothelial cancer	High	Not detected

Staining summary: Malignant cells showed moderate to strong cytoplasmic immunoreactivity. Several non-Hodgkins lymphomas and seminomas were weakly stained or negative.



**CANCER ATLAS**

Gene description: Stem-loop binding protein  
 Protein class: Predicted intracellular proteins  
 Protein evidence: Evidence at protein level

Colorectal cancer Breast cancer Prostate cancer Lung cancer Liver cancer

**STAINING SUMMARY**

HP019254

Tissue	Cancer staining	Protein expression of normal tissue	Tissue	Cancer staining	Protein expression of normal tissue
Breast cancer	High	Not detected	Melanoma	High	Not detected
Cardioid	High	Not detected	Ovarian cancer	High	Not detected
Cervical cancer	High	Not detected	Pancreatic cancer	High	Not detected
Colorectal cancer	High	Not detected	Prostate cancer	High	Not detected
Endometrial cancer	High	Not detected	Renal cancer	High	Not detected
Glioma	High	Not detected	Skin cancer	High	Not detected
Head and neck cancer	High	Not detected	Stomach cancer	High	Not detected
Liver cancer	High	Not detected	Testis cancer	High	Not detected
Lung cancer	High	Not detected	Thyroid cancer	High	Not detected
Lymphoma	High	Not detected	Urothelial cancer	High	Not detected

Staining summary: Cancer cells generally displayed moderate cytoplasmic expression often combined with nuclear staining. Strong nuclear staining was observed in several skin and colorectal cancers.

**CANCER ATLAS**

Gene description: Small nuclear ribonucleoprotein polypeptides B and B1  
 Protein class: Plasma proteins, Predicted intracellular proteins  
 Protein evidence: Evidence at protein level

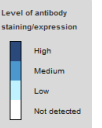
Colorectal cancer Breast cancer Prostate cancer Lung cancer Urothelial cancer

**STAINING SUMMARY**

HP003482 CAB009610

Tissue	Cancer staining	Protein expression of normal tissue	Tissue	Cancer staining	Protein expression of normal tissue
Breast cancer	High	Not detected	Melanoma	High	Not detected
Cardioid	High	Not detected	Ovarian cancer	High	Not detected
Cervical cancer	High	Not detected	Pancreatic cancer	High	Not detected
Colorectal cancer	High	Not detected	Prostate cancer	High	Not detected
Endometrial cancer	High	Not detected	Renal cancer	High	Not detected
Glioma	High	Not detected	Skin cancer	High	Not detected
Head and neck cancer	High	Not detected	Stomach cancer	High	Not detected
Liver cancer	High	Not detected	Testis cancer	High	Not detected
Lung cancer	High	Not detected	Thyroid cancer	High	Not detected
Lymphoma	High	Not detected	Urothelial cancer	High	Not detected

Staining summary: Malignant cells displayed in general moderate nuclear staining. Fractions of cases in malignant melanomas, testicular, urothelial and renal cancers were strongly positive.



**CANCER ATLAS**

Gene description: Suppressor of variegation 4-20 homolog 2 (Drosophila)  
 Protein class: Enzymes, Predicted intracellular proteins  
 Protein evidence: Evidence at protein level

Colorectal cancer Breast cancer Prostate cancer Lung cancer

**STAINING SUMMARY**

HP052284

Tissue	Cancer staining	Normal tissue staining	Tissue	Cancer staining	Normal tissue staining
Breast cancer	High	Not detected	Melanoma	High	Not detected
Cardioid	High	Not detected	Ovarian cancer	High	Not detected
Cervical cancer	High	Not detected	Pancreatic cancer	High	Not detected
Colorectal cancer	High	Not detected	Prostate cancer	High	Not detected
Endometrial cancer	High	Not detected	Renal cancer	High	Not detected
Glioma	High	Not detected	Skin cancer	High	Not detected
Head and neck cancer	High	Not detected	Stomach cancer	High	Not detected
Liver cancer	High	Not detected	Testis cancer	High	Not detected
Lung cancer	High	Not detected	Thyroid cancer	High	Not detected
Lymphoma	High	Not detected	Urothelial cancer	High	Not detected

Staining summary: Several cases of colorectal, endometrial, ovarian, thyroid and squamous cell carcinomas along with few cases of breast, pancreatic, prostate and stomach cancers exhibited moderate to strong cytoplasmic positivity with additional nuclear positivity in several cases. Remaining malignant tissues were weakly stained or negative.

**CANCER ATLAS**

Gene description: Spectrin repeat containing, nuclear envelope 1  
 Protein class: Cancer-related genes, Cytoskeleton related proteins, Disease related genes, Plasma proteins, Predicted intracellular proteins, Predicted membrane proteins  
 Protein evidence: Evidence at protein level

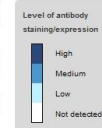
Colorectal cancer Breast cancer Prostate cancer Lung cancer Glioma

**STAINING SUMMARY**

HP019115

Tissue	Cancer staining	Normal tissue staining	Tissue	Cancer staining	Normal tissue staining
Breast cancer	High	Not detected	Melanoma	High	Not detected
Cardioid	High	Not detected	Ovarian cancer	High	Not detected
Cervical cancer	High	Not detected	Pancreatic cancer	High	Not detected
Colorectal cancer	High	Not detected	Prostate cancer	High	Not detected
Endometrial cancer	High	Not detected	Renal cancer	High	Not detected
Glioma	High	Not detected	Skin cancer	High	Not detected
Head and neck cancer	High	Not detected	Stomach cancer	High	Not detected
Liver cancer	High	Not detected	Testis cancer	High	Not detected
Lung cancer	High	Not detected	Thyroid cancer	High	Not detected
Lymphoma	High	Not detected	Urothelial cancer	High	Not detected

Staining summary: Malignant cells displayed moderate cytoplasmic and nuclear membrane positivity. Strong positivity was seen in several cases of malignant gliomas. Most prostate cancers were negative or weakly stained.





**CANCER ATLAS** [?](#)

Gene description: Synapjanin 2 binding protein  
 Protein class: Mitochondrial proteins, Predicted membrane proteins  
 Protein evidence: Evidence at protein level

Colorectal cancer Breast cancer Prostate cancer Lung cancer Liver cancer

**STAINING SUMMARY** [?](#)

HPA00086

Tissue	Cancer staining	Protein expression of normal tissue	Tissue	Cancer staining	Protein expression of normal tissue
Breast cancer			Melanoma		
Carcinoid			Ovarian cancer		
Cervical cancer			Pancreatic cancer		
Colorectal cancer			Prostate cancer		
Endometrial cancer			Renal cancer		
Glioma			Skin cancer		
Head and neck cancer			Stomach cancer		
Liver cancer			Testis cancer		
Lung cancer			Thyroid cancer		
Lymphoma			Urothelial cancer		

Staining summary: A majority of tumors displayed moderate cytoplasmic positivity with a granular pattern. Strongest staining was observed in prostate and liver cancers, while lymphomas, gliomas and squamous cell carcinomas generally were negative.

**CANCER ATLAS** [?](#)

Gene description: Transcription factor 3  
 Protein class: Cancer-related genes, Disease related genes, Plasma proteins, Predicted intracellular proteins, Transcription factors  
 Protein evidence: Evidence at protein level

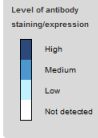
Colorectal cancer Breast cancer Prostate cancer Lung cancer Lymphoma

**STAINING SUMMARY** [?](#)

HPA04903 HPA02475 CAB018351

Tissue	Cancer staining	Protein expression of normal tissue	Tissue	Cancer staining	Protein expression of normal tissue
Breast cancer			Melanoma		
Carcinoid			Ovarian cancer		
Cervical cancer			Pancreatic cancer		
Colorectal cancer			Prostate cancer		
Endometrial cancer			Renal cancer		
Glioma			Skin cancer		
Head and neck cancer			Stomach cancer		
Liver cancer			Testis cancer		
Lung cancer			Thyroid cancer		
Lymphoma			Urothelial cancer		

Staining summary: Most of the cancer cells were either negative or displayed weak nuclear immunoreactivity. Several cases of testis cancers, lymphomas, skin cancers and colorectal cancers showed moderate to strong immunoreactivity.



**CANCER ATLAS** [?](#)

Gene description: Telomere maintenance 2  
 Protein class: Predicted intracellular proteins, Predicted membrane proteins  
 Protein evidence: Evidence at protein level

Colorectal cancer Breast cancer Prostate cancer Lung cancer Liver cancer

**STAINING SUMMARY** [?](#)

HPA04148 HPA04173

Tissue	Cancer staining	Protein expression of normal tissue	Tissue	Cancer staining	Protein expression of normal tissue
Breast cancer			Melanoma		
Carcinoid			Ovarian cancer		
Cervical cancer			Pancreatic cancer		
Colorectal cancer			Prostate cancer		
Endometrial cancer			Renal cancer		
Glioma			Skin cancer		
Head and neck cancer			Stomach cancer		
Liver cancer			Testis cancer		
Lung cancer			Thyroid cancer		
Lymphoma			Urothelial cancer		

Staining summary: Most of the malignant cells showed moderate cytoplasmic immunoreactivity. Several hepatocellular carcinomas along with a few endometrial, urothelial, gastric, renal and pancreatic cancers were strongly stained.

**CANCER ATLAS** [?](#)

Gene description: Aly/REF export factor  
 Protein class: Plasma proteins, Predicted intracellular proteins  
 Protein evidence: Evidence at protein level

Colorectal cancer Breast cancer Prostate cancer Lung cancer

**STAINING SUMMARY** [?](#)

HPA019793 CAB016281

Tissue	Cancer staining	Protein expression of normal tissue	Tissue	Cancer staining	Protein expression of normal tissue
Breast cancer			Melanoma		
Carcinoid			Ovarian cancer		
Cervical cancer			Pancreatic cancer		
Colorectal cancer			Prostate cancer		
Endometrial cancer			Renal cancer		
Glioma			Skin cancer		
Head and neck cancer			Stomach cancer		
Liver cancer			Testis cancer		
Lung cancer			Thyroid cancer		
Lymphoma			Urothelial cancer		

Staining summary: Most malignancies displayed strong nuclear staining, often combined with cytoplasmic positivity.



**CANCER ATLAS** [?](#)

Gene description: Transmembrane protein 205  
 Protein class: Predicted membrane proteins  
 Protein evidence: Evidence at protein level

Colorectal cancer Breast cancer Prostate cancer Lung cancer Liver cancer

**STAINING SUMMARY** [?](#)

HPA08540

Tissue	Cancer staining	Normal tissue staining	Tissue	Cancer staining	Normal tissue staining
Breast cancer			Melanoma		
Carcinoid			Ovarian cancer		
Cervical cancer			Pancreatic cancer		
Colorectal cancer			Prostate cancer		
Endometrial cancer			Renal cancer		
Glioma			Skin cancer		
Head and neck cancer			Stomach cancer		
Liver cancer			Testis cancer		
Lung cancer			Thyroid cancer		
Lymphoma			Urothelial cancer		

Staining summary: Most of the malignant cells displayed moderate to strong cytoplasmic positivity. Skin cancers were negative.

**CANCER ATLAS** [?](#)

Gene description: TRAF interacting protein  
 Protein class: Predicted intracellular proteins  
 Protein evidence: Evidence at protein level

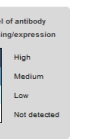
Colorectal cancer Breast cancer Prostate cancer Lung cancer Liver cancer

**STAINING SUMMARY** [?](#)

HPA03281 HPA03282

Tissue	Cancer staining	Protein expression of normal tissue	Tissue	Cancer staining	Protein expression of normal tissue
Breast cancer			Melanoma		
Carcinoid			Ovarian cancer		
Cervical cancer			Pancreatic cancer		
Colorectal cancer			Prostate cancer		
Endometrial cancer			Renal cancer		
Glioma			Skin cancer		
Head and neck cancer			Stomach cancer		
Liver cancer			Testis cancer		
Lung cancer			Thyroid cancer		
Lymphoma			Urothelial cancer		

Staining summary: Malignant tissues showed moderate cytoplasmic with additional nuclear positivity in many cases. Testicular cancers along with few cases of malignant gliomas, prostate and pancreatic cancers exhibited strong immunoreactivity. Several cases of renal and endometrial cancers were negative.



**CANCER ATLAS**

Gene description: TRNA methyltransferase 1 homolog (S. cerevisiae)  
 Protein class: Enzymes, Plasma proteins, Predicted intracellular proteins  
 Protein evidence: Evidence at protein level

Colorectal cancer Breast cancer Prostate cancer Lung cancer Stomach cancer

**STAINING SUMMARY**

HP064130 HP064130

Tissue	Cancer staining	Protein expression of normal tissue	Tissue	Cancer staining	Protein expression of normal tissue
Breast cancer	Low	Not detected	Melanoma	Low	Not detected
Carcinoid	Low	Not detected	Ovarian cancer	Low	Not detected
Cervical cancer	Low	Not detected	Pancreatic cancer	Low	Not detected
Colorectal cancer	Low	Not detected	Prostate cancer	Low	Not detected
Endometrial cancer	Low	Not detected	Renal cancer	Low	Not detected
Glioma	Low	Not detected	Skin cancer	Low	Not detected
Head and neck cancer	Low	Not detected	Stomach cancer	Low	Not detected
Liver cancer	Low	Not detected	Testis cancer	Low	Not detected
Lung cancer	Low	Not detected	Thyroid cancer	Low	Not detected
Lymphoma	Low	Not detected	Urothelial cancer	Low	Not detected

Staining summary: Most of the malignant cells showed weak to moderate cytoplasmic positivity with occasional nuclear or membranous immunoreactivity. Several cases of malignant lymphomas, gliomas, lung and endometrial cancers were negative.

**CANCER ATLAS**

Gene description: TTK protein kinase  
 Protein class: Enzymes, Plasma proteins, Predicted intracellular proteins  
 Protein evidence: Evidence at protein level

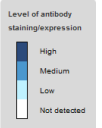
Colorectal cancer Breast cancer Prostate cancer Lung cancer Testis cancer

**STAINING SUMMARY**

HP061624 CAB010166 CAB013229

Tissue	Cancer staining	Protein expression of normal tissue	Tissue	Cancer staining	Protein expression of normal tissue
Breast cancer	Low	Not detected	Melanoma	Low	Not detected
Carcinoid	Low	Not detected	Ovarian cancer	Low	Not detected
Cervical cancer	Low	Not detected	Pancreatic cancer	Low	Not detected
Colorectal cancer	Low	Not detected	Prostate cancer	Low	Not detected
Endometrial cancer	Low	Not detected	Renal cancer	Low	Not detected
Glioma	Low	Not detected	Skin cancer	Low	Not detected
Head and neck cancer	Low	Not detected	Stomach cancer	Low	Not detected
Liver cancer	Low	Not detected	Testis cancer	Low	Not detected
Lung cancer	Low	Not detected	Thyroid cancer	Low	Not detected
Lymphoma	Low	Not detected	Urothelial cancer	Low	Not detected

Staining summary: Most malignancies showed weak to moderate cytoplasmic staining. A majority of testicular cancers and several malignant lymphomas and colorectal cancers were strongly stained.



**CANCER ATLAS**

Gene description: WD repeat domain 75  
 Protein class: Predicted intracellular proteins  
 Protein evidence: Evidence at protein level

Colorectal cancer Breast cancer Prostate cancer Lung cancer Liver cancer

**STAINING SUMMARY**

HP032199

Tissue	Cancer staining	Normal tissue staining	Tissue	Cancer staining	Normal tissue staining
Breast cancer	Low	Not detected	Melanoma	Low	Not detected
Carcinoid	Low	Not detected	Ovarian cancer	Low	Not detected
Cervical cancer	Low	Not detected	Pancreatic cancer	Low	Not detected
Colorectal cancer	Low	Not detected	Prostate cancer	Low	Not detected
Endometrial cancer	Low	Not detected	Renal cancer	Low	Not detected
Glioma	Low	Not detected	Skin cancer	Low	Not detected
Head and neck cancer	Low	Not detected	Stomach cancer	Low	Not detected
Liver cancer	Low	Not detected	Testis cancer	Low	Not detected
Lung cancer	Low	Not detected	Thyroid cancer	Low	Not detected
Lymphoma	Low	Not detected	Urothelial cancer	Low	Not detected

Staining summary: Most malignant cells showed weak to moderate cytoplasmic and nuclear often nucleolar immunoreactivity. Several cases of prostate cancers and a few duct carcinomas of breast were strongly stained. Most malignant gliomas were negative.

**CANCER ATLAS**

Gene description: Zinc finger CCH-type containing 3  
 Protein class: Predicted intracellular proteins  
 Protein evidence: Evidence at protein level

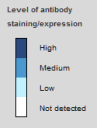
Colorectal cancer Breast cancer Prostate cancer Lung cancer Liver cancer

**STAINING SUMMARY**

HP022656

Tissue	Cancer staining	Protein expression of normal tissue	Tissue	Cancer staining	Protein expression of normal tissue
Breast cancer	Low	Not detected	Melanoma	Low	Not detected
Carcinoid	Low	Not detected	Ovarian cancer	Low	Not detected
Cervical cancer	Low	Not detected	Pancreatic cancer	Low	Not detected
Colorectal cancer	Low	Not detected	Prostate cancer	Low	Not detected
Endometrial cancer	Low	Not detected	Renal cancer	Low	Not detected
Glioma	Low	Not detected	Skin cancer	Low	Not detected
Head and neck cancer	Low	Not detected	Stomach cancer	Low	Not detected
Liver cancer	Low	Not detected	Testis cancer	Low	Not detected
Lung cancer	Low	Not detected	Thyroid cancer	Low	Not detected
Lymphoma	Low	Not detected	Urothelial cancer	Low	Not detected

Staining summary: A few cases of liver and gastric cancers displayed moderate cytoplasmic positivity while the remaining malignancies were negative or weakly stained.



**CANCER ATLAS**

Gene description: Zinc finger protein 688  
 Protein class: Predicted intracellular proteins, Transcription factors  
 Protein evidence: Evidence at protein level

Colorectal cancer Breast cancer Prostate cancer Lung cancer Liver cancer

**STAINING SUMMARY**

HP064368

Tissue	Cancer staining	Normal tissue staining	Tissue	Cancer staining	Normal tissue staining
Breast cancer	Low	Not detected	Melanoma	Low	Not detected
Carcinoid	Low	Not detected	Ovarian cancer	Low	Not detected
Cervical cancer	Low	Not detected	Pancreatic cancer	Low	Not detected
Colorectal cancer	Low	Not detected	Prostate cancer	Low	Not detected
Endometrial cancer	Low	Not detected	Renal cancer	Low	Not detected
Glioma	Low	Not detected	Skin cancer	Low	Not detected
Head and neck cancer	Low	Not detected	Stomach cancer	Low	Not detected
Liver cancer	Low	Not detected	Testis cancer	Low	Not detected
Lung cancer	Low	Not detected	Thyroid cancer	Low	Not detected
Lymphoma	Low	Not detected	Urothelial cancer	Low	Not detected

Staining summary: Malignant cells displayed weak to moderate nuclear staining with additional cytoplasmic positivity in several tissues. Membranous positivity was observed in a few cases of colorectal, thyroid and ovarian cancers. A few cases of several malignancies were strongly stained.

