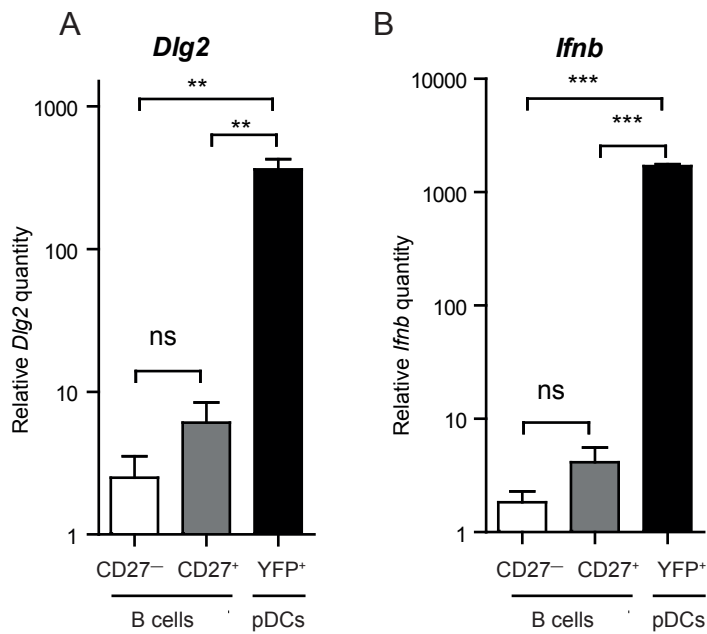


## Additional file 2



**Additional file 2. Expression of *Dlg2* in B cells.** Murine splenic cells were *ex vivo* stimulated with CpG (1 $\mu$ M) complexed to DOTAP. CD27<sup>+</sup> and CD27<sup>-</sup> B cells (CD3<sup>-</sup>CD11c<sup>-</sup>CD19<sup>+</sup>B220<sup>+</sup>) were FACS sorted. *Dlg2* and *Ifnb* expression was analyzed by qPCR. FACS sorted IFN $\beta$ /YFP<sup>+</sup> cells were used as control. Data shown are relative quantities ( $2^{-\Delta\Delta Ct}$ ) from one experiment performed in three biological replicates. Data shown are mean values  $\pm$ SEM. Differences between groups were tested using One-way ANOVA followed Bonferroni's Multiple Comparison Test. A P value <0.05 was considered significant. ns: P>0.05, \*: P<0.05, \*\*: P<0.01, \*\*\*: P<0.001