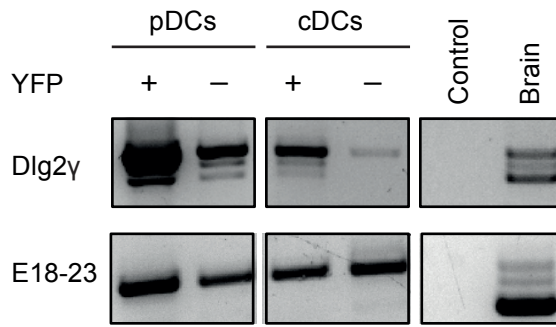


#### Additional file 4



**Additional file 4. *Dlg2* isoforms expressed in IFN $\beta$ -producing pDCs and cDCs.** *Dlg2* Isoforms were analyzed by PCR on FACS sorted IFN $\beta$ /YFP<sup>+</sup> and IFN $\beta$ /YFP<sup>-</sup> pDCs and cDCs as well as brain tissue as described in the material and methods and figure legends of figure 2. Upper panel shows expression of the *Dlg2* $\gamma$  isoform in IFN $\beta$ /YFP<sup>+</sup> and IFN $\beta$ /YFP<sup>-</sup> pDCs, cDCs and brain tissue. Lower panel shows the splicing pattern of the SH3-GK linker coding region.